

**Kimmage to
City Centre Core
Bus Corridor Scheme**
July 2023

**Natura
Impact
Statement**

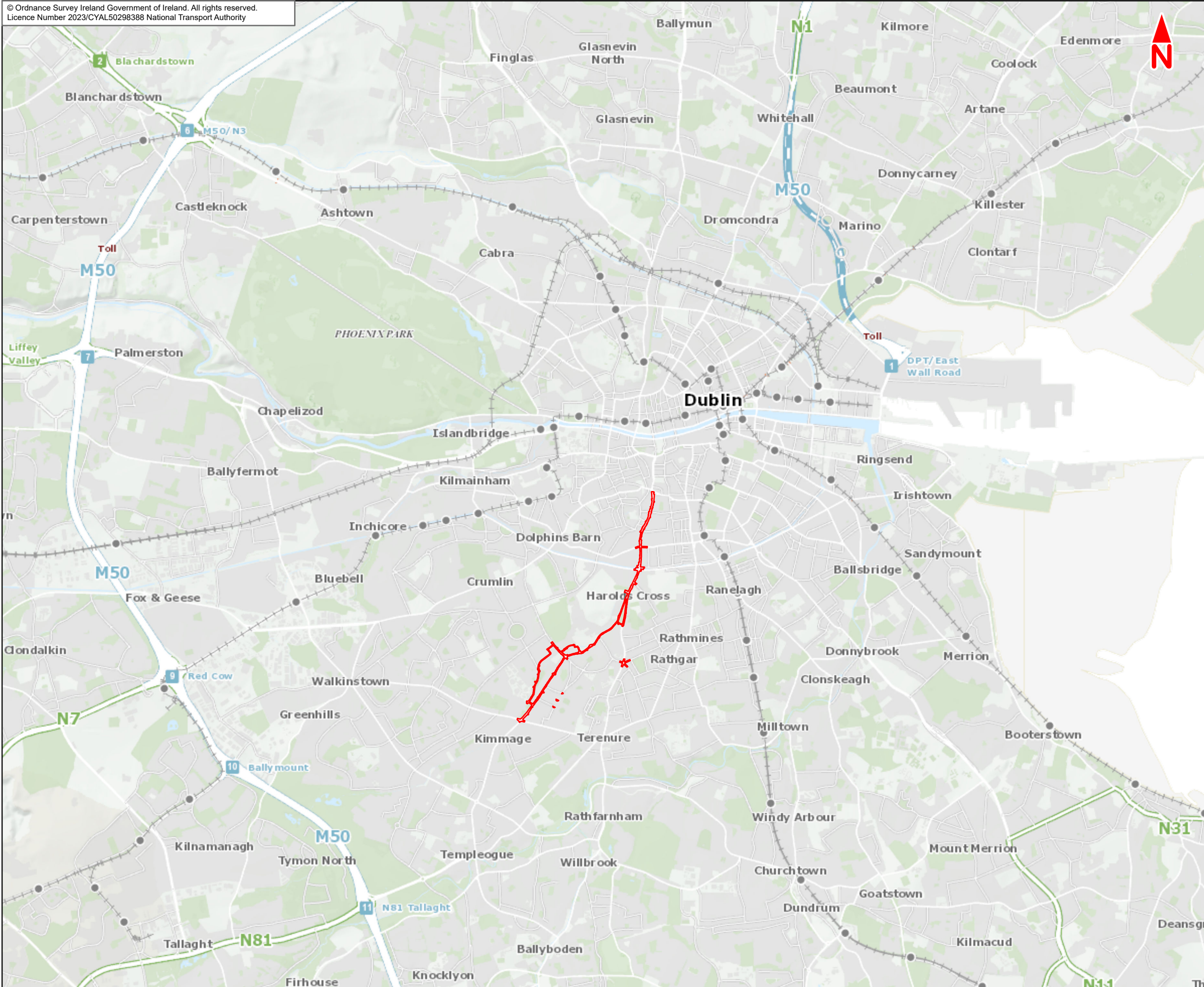
Figures

**BUS
CONNECTS**

SUSTAINABLE TRANSPORT FOR A BETTER CITY.

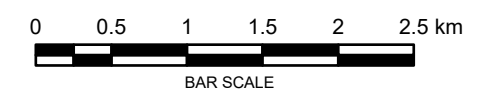


Figure 1
Proposed Scheme
Location



Legend :
 Kimmage to City Centre
 Core Bus Corridor Scheme

Contains Irish Public Sector Data licensed under a Creative Commons Attribution 4.0 International (CC BY 4.0) licence.



Disclaimer
 a. © National Transport Authority (NTA) 2023. This drawing is confidential and the copyright in it is owned by NTA. This drawing must not be either loaned, copied or otherwise reproduced in whole or in part or used for any purpose without the prior permission of NTA.
 b. This drawing is to be used for the design element identified in the title block. Other information shown is to be considered indicative only. The drawing is to be read in conjunction with all other relevant design drawings.
 c. O.S. data used for plans are printed under © Ordnance Survey Ireland Government of Ireland. All rights reserved. Licence Number 2023/CYAL50298388 National Transport Authority. All elevations are in metres and relate to OSi Geoid Model (OSGM15) Mean Head. All Co-ordinates are in Irish Transverse Mercator Grid (ITM) as defined by OSi active local GPS station.
 d. Information concerning the position of apparatus shown on this drawing is based on drawings supplied by the utility owners and/or the utility works contractor, whilst every care has been taken in the preparation of this drawing, positions should be taken as approximate and are intended for general guidance only and no representation is made by the NTA as to the accuracy, completeness, sufficiency or otherwise of this drawing and the position of the apparatus. The information contained herein does not purport to be comprehensive or final as the apparatus is subject to being altered and/or superseded. Recipients should not rely on this information. Any liabilities are hereby expressly disclaimed.
 e. The information contained herein has been provided by the NTA but does not purport to be comprehensive or final. Recipients should not rely on the information. Neither the NTA nor any of its directors, officers, employees, agents, stakeholders or advisers make any representation or warranty as to, or accept any liability or responsibility in relation to, the adequacy, accuracy, reasonableness or completeness of the information provided as part of this document or any matter on which the information is based (including but not limited to loss or damage arising as a result of reliance by recipients on the information or any part of it. Any liabilities are hereby expressly disclaimed.



Rev	Date	Drn	Chk'd	App'd	Description
M01	Mar 2022	EK	PW	DK	ISSUE FOR PHASE 4 : PLANNING

Client: **NTA**
 Udarás Náisiúnta Iompair
 National Transport Authority

Consultant: **JACOBS ARUP SYSTRA**

Date: 22/03/2023
 Scale @ A3: 1:50 000

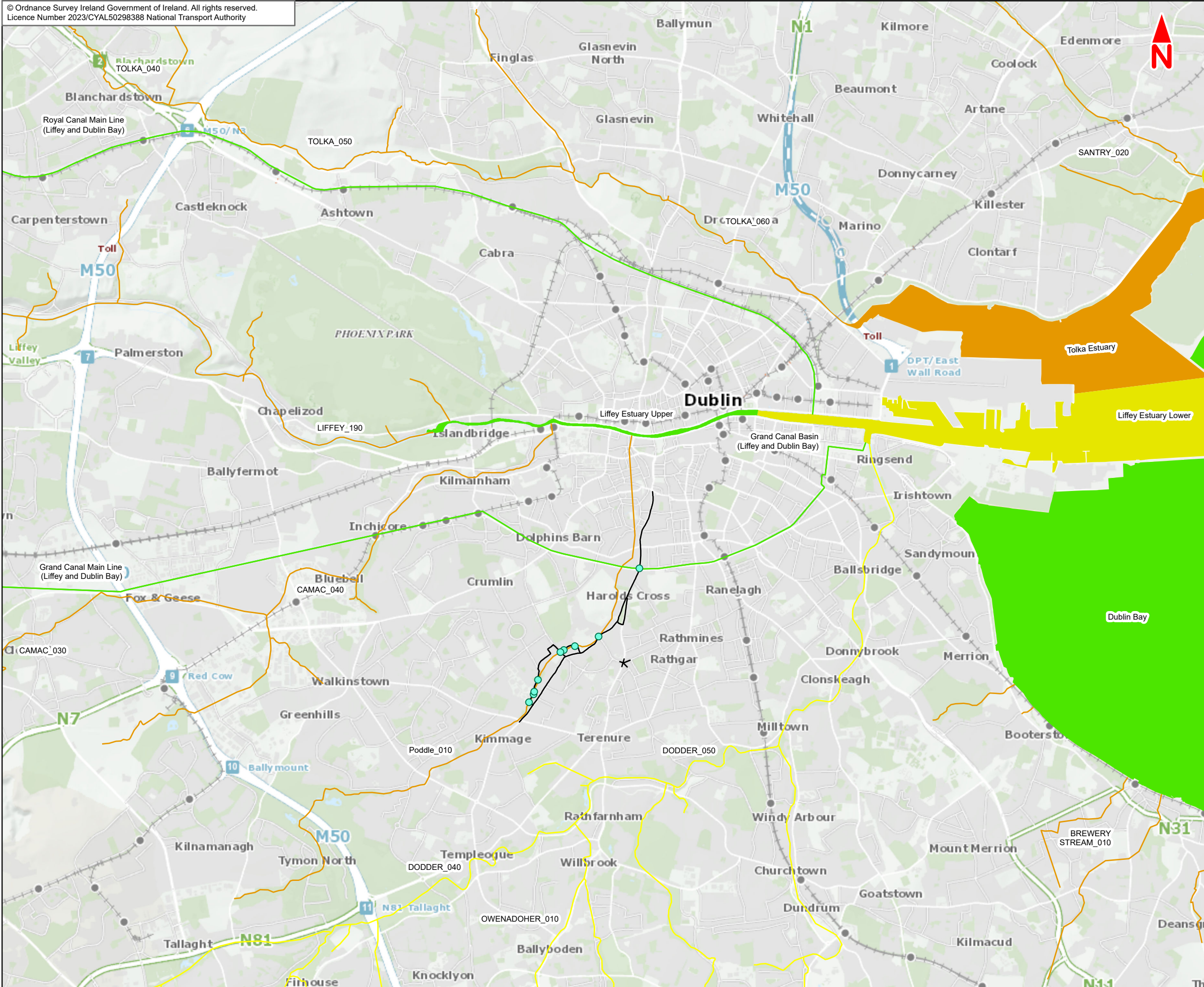
Project Code: BCIDE
 Originator Code: JAC

Drawn: EK
 Checked: PW
 Approved: DK

Programme Title: BUSCONNECTS DUBLIN CORE BUS CORRIDORS INFRASTRUCTURE WORKS			
Drawing Title: Kimmage to City Centre Core Bus Corridor Scheme Figure 1 Proposed Scheme Location			
Drawing File Name: BCIDE-JAC-ENV_BD-0011_XX_00-DR-GG-1001	Sheet Number: 1 of 1	Status: A	Rev: M01

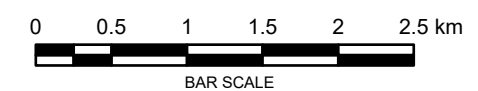


Figure 2
Hydrological Connectivity to
the Proposed Scheme



- Legend :**
- Kimmage to City Centre Core Bus Corridor Scheme
 - Scheme Waterbody Crossings
 - Canal Waterbody WFD Status 2016 - 2021**
 - Good
 - Moderate
 - Poor
 - River Waterbody WFD Status 2016 - 2021**
 - Good
 - Moderate
 - Poor
 - Transitional Waterbody WFD Status 2016 - 2021**
 - Good
 - Moderate
 - Poor
 - Coastal Waterbody WFD Status 2016 - 2021**
 - Good

Contains Irish Public Sector Data licensed under a Creative Commons Attribution 4.0 International (CC BY 4.0) licence.



Disclaimer
a. © National Transport Authority (NTA) 2023. This drawing is confidential and the copyright in it is owned by NTA. This drawing must not be either loaned, copied or otherwise reproduced in whole or in part or used for any purpose without the prior permission of NTA.
b. This drawing is to be used for the design element identified in the title block. Other information shown is to be considered indicative only. The drawing is to be read in conjunction with all other relevant design drawings.
c. O.S. data used for plans are printed under © Ordnance Survey Ireland Government of Ireland. All rights reserved. Licence Number 2023/CYAL50298388 National Transport Authority. All elevations are in metres and relate to OSi Geoid Model (OSGM15) Mean Head. All Co-ordinates are in Irish

Transverse Mercator Grid (ITM) as defined by OSI active local GPS station.
d. Information concerning the position of apparatus shown on this drawing is based on drawings supplied by the utility owners and/or the utility works contractor, whilst every care has been taken in the preparation of this drawing, positions should be taken as approximate and are intended for general guidance only and no representation is made by the NTA as to the accuracy, completeness, sufficiency or otherwise of this drawing and the position of the apparatus. The information contained herein does not purport to be comprehensive or final as the apparatus is subject to being altered and/or superseded. Recipients should not rely on this information. Any liabilities are hereby expressly disclaimed.

e. The information contained herein has been provided by the NTA but does not purport to be comprehensive or final. Recipients should not rely on the information. Neither the NTA nor any of its directors, officers, employees, agents, stakeholders or advisers make any representation or warranty as to, or accept any liability or responsibility in relation to, the adequacy, accuracy, reasonableness or completeness of the information provided as part of this document or any matter on which the information is based (including but not limited to loss or damage arising as a result of reliance by recipients on the information or any part of it. Any liabilities are hereby expressly disclaimed.



Rev	Date	Drn	Chk'd	App'd	Description
M01	Mar 2022	TJ	PW	DK	ISSUE FOR PHASE 4 : PLANNING

Client: **NTA**
Udarás Náisiúnta Iompair
National Transport Authority

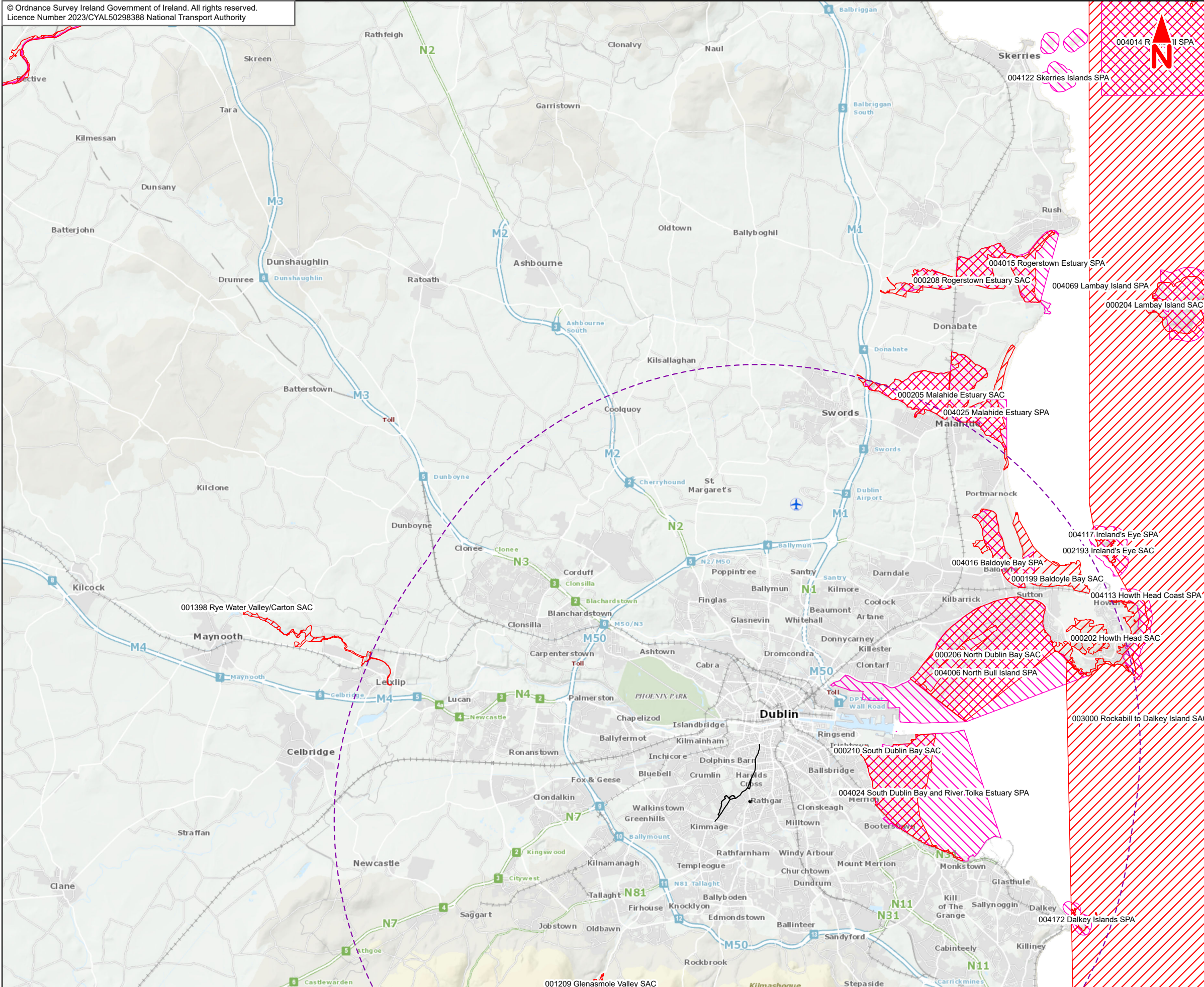
Consultant: **JACOBS ARUP SYSTRA**

Date: 22/03/2023 | Scale @ A3: 1:50 000
 Drawn: TJ | Checked: PW | Approved: DK
 Project Code: BCIDE | Originator Code: JAC | QMS Code:

Programme Title: BUSCONNECTS DUBLIN CORE BUS CORRIDORS INFRASTRUCTURE WORKS			
Drawing Title: Kimmage to City Centre Core Bus Corridor Scheme Figure 2 Hydrological Connectivity to the Proposed Scheme			
Drawing File Name: BCIDE-JAC-ENV_BD-0011_XX_00-DR-GG-1003	Sheet Number: 1 of 1	Status: A	Rev: M01



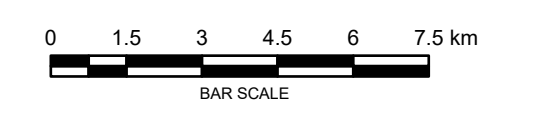
Figure 3
European Site in the Vicinity
of the Proposed Scheme



Legend :

- Kimmage to City Centre
- Core Bus Corridor Scheme
- 15km from Proposed Scheme
- Special Area of Conservation
- Special Protection Areas

Contains Irish Public Sector Data licensed under a Creative Commons Attribution 4.0 International (CC BY 4.0) licence.



Disclaimer
a. © National Transport Authority (NTA) 2023. This drawing is confidential and the copyright in it is owned by NTA. This drawing must not be either loaned, copied or otherwise reproduced in whole or in part or used for any purpose without the prior permission of NTA.
b. This drawing is to be used for the design element identified in the title block. Other information shown is to be considered indicative only. The drawing is to be read in conjunction with all other relevant design drawings.
c. O.S. data used for plans are printed under © Ordnance Survey Ireland Government of Ireland. All rights reserved. Licence Number 2023/CYAL50298388 National Transport Authority. All elevations are in metres and relate to OSi Geoid Model (OSGM15) Mean Head. All Co-ordinates are in Irish

Transverse Mercator Grid (ITM) as defined by OSI active local GPS station.
d. Information concerning the position of apparatus shown on this drawing is based on drawings supplied by the utility owners and/or the utility works contractor, whilst every care has been taken in the preparation of this drawing, positions should be taken as approximate and are intended for general guidance only and no representation is made by the NTA as to the accuracy, completeness, sufficiency or otherwise of this drawing and the position of the apparatus. The information contained herein does not purport to be comprehensive or final as the apparatus is subject to being altered and/or superceded. Recipients should not rely on this information. Any liabilities are hereby expressly disclaimed.

e. The information contained herein has been provided by the NTA but does not purport to be comprehensive or final. Recipients should not rely on the information. Neither the NTA nor any of its directors, officers, employees, agents, stakeholders or advisers make any representation or warranty as to, or accept any liability or responsibility in relation to, the adequacy, accuracy, reasonableness or completeness of the information provided as part of this document or any matter on which the information is based (including but not limited to loss or damage arising as a result of reliance by recipients on the information or any part of it. Any liabilities are hereby expressly disclaimed.



Rev	Date	Drn	Chk'd	App'd	Description
M01	Mar 2023	EK	PW	DK	ISSUE FOR PHASE 4 : PLANNING

Client: **NTA**
Udarás Náisiúnta Iompair
National Transport Authority

Consultant: **JACOBS ARUP SYSTRA**

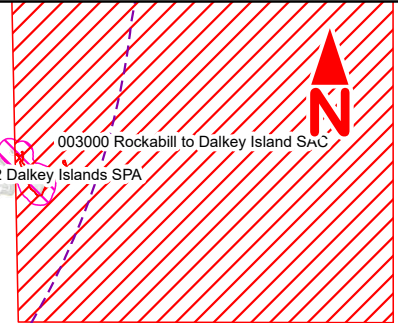
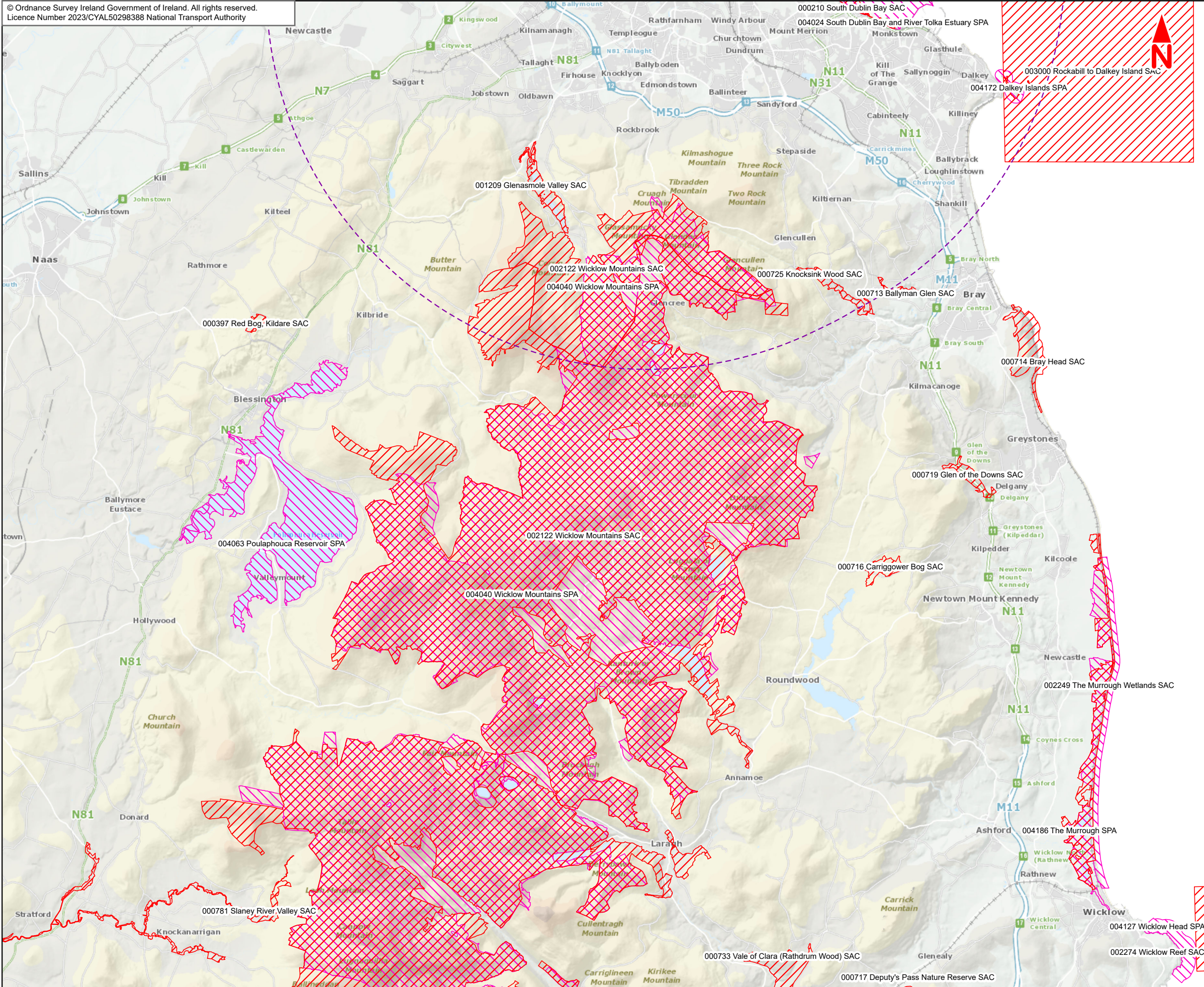
Date: 22/03/2023
Scale @ A3: 1:150 000

Project Code: BCIDE
Originator Code: JAC

Drawn: EK
Checked: PW
Approved: DK

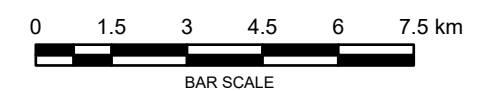
QMS Code:

Programme Title: BUSCONNECTS DUBLIN CORE BUS CORRIDORS INFRASTRUCTURE WORKS			
Drawing Title: Kimmage to City Centre Core Bus Corridor Scheme Figure 3 European sites in the Vicinity of the Proposed Scheme			
Drawing File Name: BCIDE-JAC-ENV_BD-0011_XX_00-DR-GG-1090	Sheet Number: 1 of 2	Status: A	Rev: M01



- Legend :**
- Kimmage to City Centre Core Bus Corridor Scheme
 - - - 15km from Proposed Scheme
 - ▨ Special Area of Conservation
 - ▨ Special Protection Areas

Contains Irish Public Sector Data licensed under a Creative Commons Attribution 4.0 International (CC BY 4.0) licence.



Disclaimer
a. © National Transport Authority (NTA) 2023. This drawing is confidential and the copyright in it is owned by NTA. This drawing must not be either loaned, copied or otherwise reproduced in whole or in part or used for any purpose without the prior permission of NTA.
b. This drawing is to be used for the design element identified in the titleblock. Other information shown is to be considered indicative only. The drawing is to be read in conjunction with all other relevant design drawings.
c. O.S. data used for plans are printed under © Ordnance Survey Ireland Government of Ireland. All rights reserved. Licence Number 2023/CYAL50298388 National Transport Authority. All elevations are in metres and relate to OSi Geoid Model (OSGM15) Mean Head. All Co-ordinates are in Irish

Transverse Mercator Grid (ITM) as defined by OSi active local GPS station.
d. Information concerning the position of apparatus shown on this drawing is based on drawings supplied by the utility owners and/or the utility works contractor, whilst every care has been taken in the preparation of this drawing, positions should be taken as approximate and are intended for general guidance only and no representation is made by the NTA as to the accuracy, completeness, sufficiency or otherwise of this drawing and the position of the apparatus. The information contained herein does not purport to be comprehensive or final as the apparatus is subject to being altered and/or superseded. Recipients should not rely on this information. Any liabilities are hereby expressly disclaimed.

e. The information contained herein has been provided by the NTA but does not purport to be comprehensive or final. Recipients should not rely on the information. Neither the NTA nor any of its directors, officers, employees, agents, stakeholders or advisers make any representation or warranty as to, or accept any liability or responsibility in relation to, the adequacy, accuracy, reasonableness or completeness of the information provided as part of this document or any matter on which the information is based (including but not limited to loss or damage arising as a result of reliance by recipients on the information or any part of it. Any liabilities are hereby expressly disclaimed.



Rev	Date	Drn	Chk'd	App'd	Description
M01	Mar 2023	EK	PW	DK	ISSUE FOR PHASE 4 : PLANNING

Client
NTA
Udarás Náisiúnta Iompair
National Transport Authority

Consultant
JACOBS ARUP SYSTRA

Programme Title BUSCONNECTS DUBLIN CORE BUS CORRIDORS INFRASTRUCTURE WORKS				
Drawing Title Kimmage to City Centre Core Bus Corridor Scheme Figure 3 European sites in the Vicinity of the Proposed Scheme				
Date 22/03/2023	Scale @ A3 1:150 000	Drawn EK	Checked PW	Approved DK
Project Code BCIDE	Originator Code JAC	QMS Code		Drawing File Name BCIDE-JAC-ENV_BD-0011_XX_00-DR-GG-1091
Sheet Number 2 of 2		Status A	Rev M01	