



Appendix B9
Public Lighting



BUSCONNECTS DUBLIN CORE BUS CORRIDORS INFRASTRUCTURE WORKS

KIMMAGE TO CITY CENTRE CORE BUS CORRIDOR SCHEME

PUBLIC LIGHTING	
DRAWING SERIES NUMBER(S)	DRAWING SERIES DESCRIPTION
BDIDD-ROT-LHT_IX-0011_XX_00-DR-EO-0001	KIMMAGE TO CITY CENTRE CORE BUS CORRIDOR SCHEME. PUBLIC LIGHTING. COVER SHEET
BCIDD-ROT-LHT_KP-0011_XX_00-DR-EO-0001	KIMMAGE TO CITY CENTRE CORE BUS CORRIDOR SCHEME. PUBLIC LIGHTING. KEY PLAN
BCIDD-ROT-LHT_RL-0011_XX_00-DR-EO-0001 to 0014	KIMMAGE TO CITY CENTRE CORE BUS CORRIDOR SCHEME. PUBLIC LIGHTING LAYOUT. DRAWINGS

\\wddubp1u20191917117117-02_WIP08 MODELS01 CAD01 DWG03 STG 3 - STATUTORY PROCESS (M)01 PLANNING11 KIMMAGE/COVER SHEETS/BCIDD-ROT-LHT_IX-0011_XX_00-DR-EO-0001.dwg

Disclaimer

a. © National Transport Authority (NTA) 2022. This drawing is confidential and the copyright in it is owned by NTA. This drawing must not be either loaned, copied or otherwise reproduced in whole or in part or used for any purpose without the prior permission of NTA.

b. This drawing is to be used for the design element identified in the titleblock. Other information shown is to be considered indicative only. The drawing is to be read in conjunction with all other relevant design drawings.

c. O.S. data used for plans are printed under © Ordnance Survey Ireland Government of Ireland. All rights reserved. Licence Number 2022/OSI_NMA_180 National Transport Authority. All elevations are in metres and relate to OSI Geoid Model (OSGM15) Mean Head. All Co-ordinates are in Irish Transverse Mercator Grid (ITM) as defined by OSI active local GPS station.

d. Information concerning the position of apparatus shown on this drawing is based on drawings supplied by the utility owners and/or the utility works contractor, whilst every care has been taken in the preparation of this drawing, positions should be taken as approximate and are intended for general guidance only and no representation is made by the NTA as to the accuracy, completeness, sufficiency or otherwise of this drawing and the position of the apparatus. The information contained herein does not purport to be comprehensive or final as the apparatus is subject to being altered and/or superceded. Recipients should not rely on this information. Any liabilities are hereby expressly disclaimed.

e. The information contained herein has been provided by the NTA but does not purport to be comprehensive or final. Recipients should not rely on the information. Neither the NTA nor any of its directors, officers, employees, agents, stakeholders or advisers make any representation or warranty as to, or accept any liability or responsibility in relation to, the adequacy, accuracy, reasonableness or completeness of the information provided as part of this document or any matter on which the information is based (including but not limited to loss or damage arising as a result of reliance by recipients on the information or any part of it). Any liabilities are hereby expressly disclaimed.

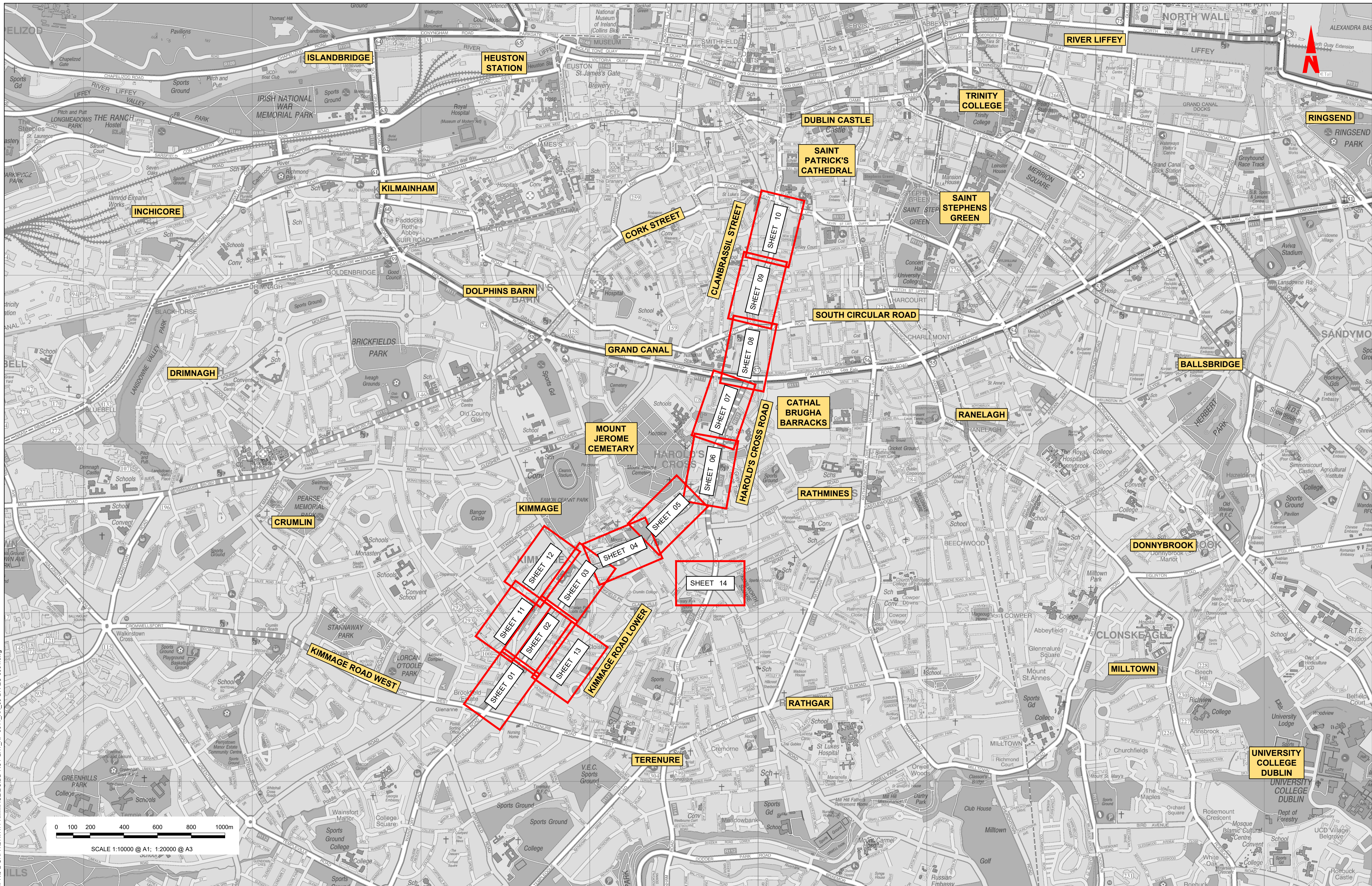


Rev	Date	Dm	Chk'd	App'd	Description
M01	FEB 2023	CG	SMG	SMG	ISSUE FOR PHASE 4: PLANNING

Client NTA Údarás Náisiúnta Iompair National Transport Authority		Engineering Designer ROD RUGHAN & O'DONOVAN TYPSA		
Date FEB 2023	Scale NTS @ A1 NTS @ A3	Drawn CG	Checked SMG	Approved SMG
Programme Code BCIDD	Originator Code ROT	QMS Code		

Programme Title BUSCONNECTS DUBLIN CORE BUS CORRIDORS INFRASTRUCTURE WORKS			
Drawing Title KIMMAGE TO CITY CENTRE CORE BUS CORRIDOR SCHEME PUBLIC LIGHTING COVER SHEET			
Drawing File Name BCIDD-ROT-LHT_IX-0011_XX_00-DR-EO-0001	Sheet Number 01 of 01	Status A	Rev M01

DO NOT SCALE USE FIGURED DIMENSIONS ONLY



0 100 200 400 600 800 1000m
 SCALE 1:10000 @ A1; 1:20000 @ A3

1. This drawing is to be used for the design element identified in the title block. Other information shown is to be considered indicative only. The drawing is to be read in conjunction with all other relevant design drawings.
 2. O.S. data used for plans are printed under © Ordnance Survey Ireland Government of Ireland. All rights reserved. Licence Number 2022/OSI_NMA_180 National Transport Authority. All elevations are in metres and relate to OSI Geoid Model (OSGM15) Mean Head. All Co-ordinates are in Irish Transverse Mercator Grid (ITM) as defined by OSI active local GPS station.

3. The information contained herein has been provided by the NTA but does not purport to be comprehensive or final. Recipients should not rely on the information. Neither the NTA nor any of its directors, officers, employees, agents, stakeholders or advisers make any representation or warranty as to, or accept any liability or responsibility in relation to, the accuracy, accuracy, reasonableness or completeness of the information provided as part of this document or any matter on which the information is based (including but not limited to loss or damage arising as a result of reliance by recipients on the information or any part of it). Any liabilities are hereby expressly disclaimed.

Rev	Date	Drn	Chk'd	App'd	Description
M01	FEB 2023	JBB	EFD	SMG	ISSUE FOR PHASE 4: PLANNING

Client: **NTA**
 Údarás Náisiúnta Iompair
 National Transport Authority

Engineering Designer: **PROD**
 TYPISA

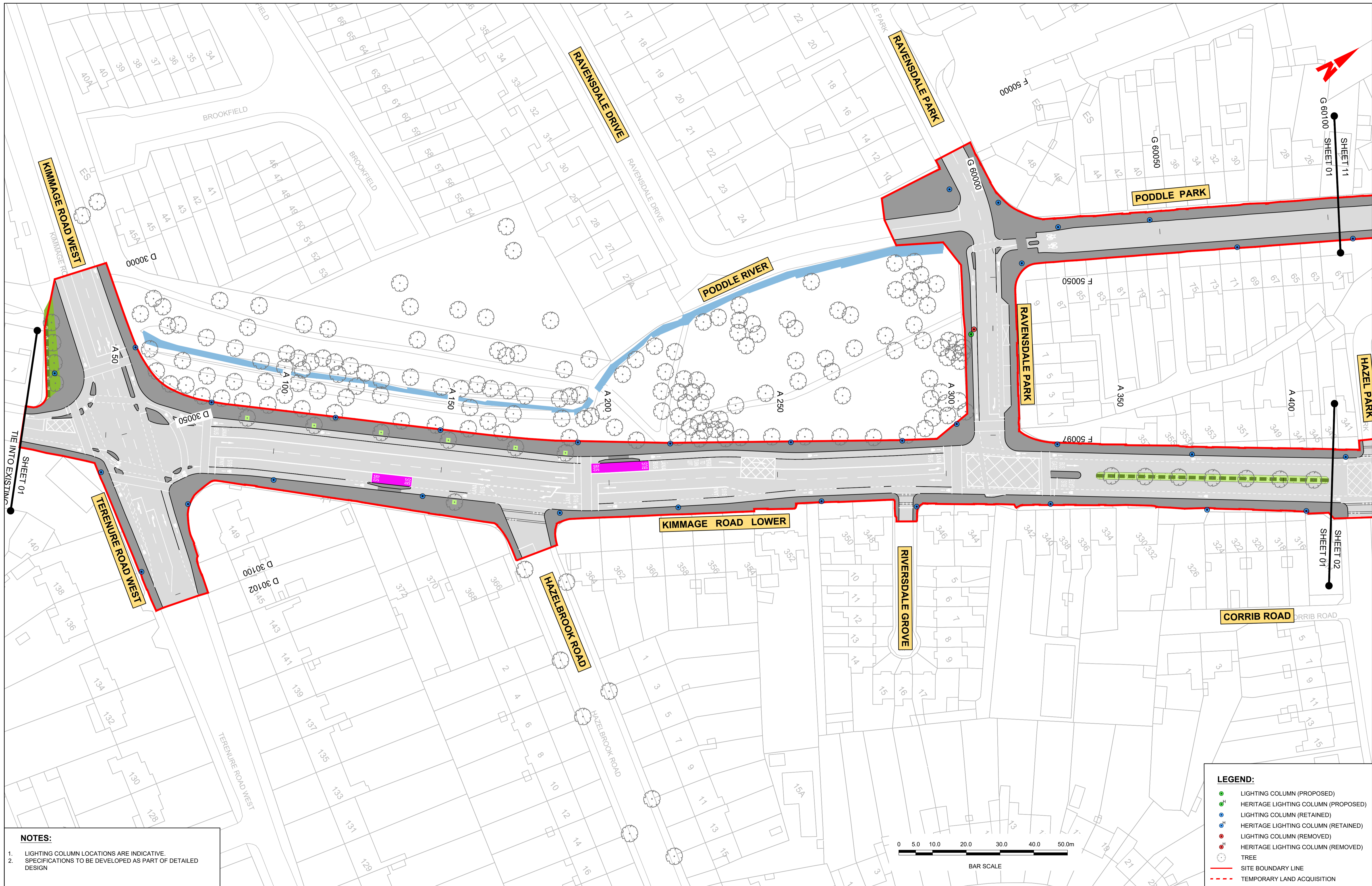
Programme Title: **BUSCONNECTS DUBLIN**
CORE BUS CORRIDORS INFRASTRUCTURE WORKS

Drawing Title: **KIMMAGE TO CITY CENTRE SCHEME**
PUBLIC LIGHTING
KEYPLAN

Drawing File Name: BCIDD-ROT-LHT_KP-0011_XX_00-DR-EO-0001
 Sheet Number: 01 of 01
 Status: A
 Rev: M01

Date	Scale	Drawn	Checked	Approved
FEB 2023	1:10000 @ A1 1:20000 @ A3	JBB	EFD	SMG

Drawing File Name: BCIDD-ROT-LHT_KP-0011_XX_00-DR-EO-0001
 Sheet Number: 01 of 01
 Status: A
 Rev: M01



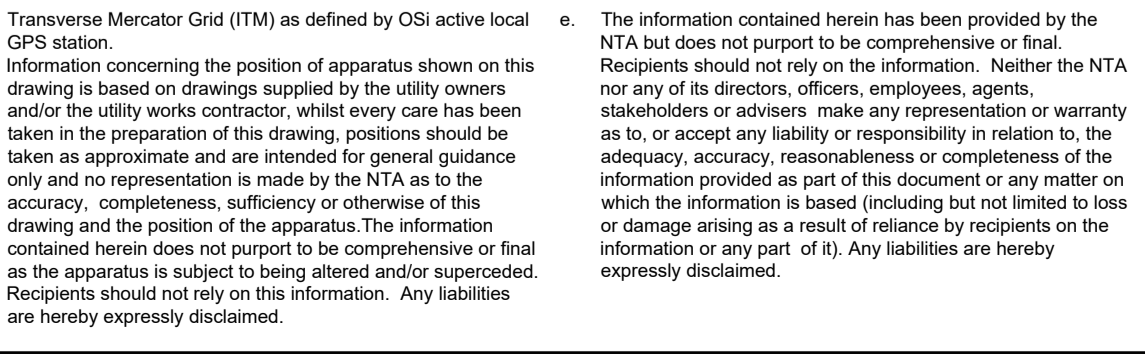
NOTES:

- LIGHTING COLUMN LOCATIONS ARE INDICATIVE.
- SPECIFICATIONS TO BE DEVELOPED AS PART OF DETAILED DESIGN

LEGEND:

- LIGHTING COLUMN (PROPOSED)
- HERITAGE LIGHTING COLUMN (PROPOSED)
- LIGHTING COLUMN (RETAINED)
- HERITAGE LIGHTING COLUMN (RETAINED)
- LIGHTING COLUMN (REMOVED)
- HERITAGE LIGHTING COLUMN (REMOVED)
- TREE
- SITE BOUNDARY LINE
- TEMPORARY LAND ACQUISITION

Disclaimer
 a. © National Transport Authority (NTA) 2022. This drawing is confidential and the copyright in it is owned by NTA. This drawing must not be either loaned, copied or otherwise reproduced in whole or in part or used for any purpose without the prior permission of NTA.
 b. This drawing is to be used for the design element identified in the title box. Other information shown is to be considered indicative only. The drawing is to be read in conjunction with all other relevant design drawings.
 c. O.S. data used for plans are printed under © Ordnance Survey Ireland Government of Ireland. All rights reserved. Licence Number 2022/OSI_NMA_180 National Transport Authority. All elevations are in metres and relate to OSI Geoid Model (OSGM15) Mean Head. All Co-ordinates are in Irish Transverse Mercator Grid (ITM) as defined by OSI active local GPS station.
 d. Information concerning the position of apparatus shown on this drawing is based on drawings supplied by the utility owners and/or the utility works contractor, whilst every care has been taken in the preparation of this drawing, positions should be taken as approximate and are intended for general guidance only and no representation is made by the NTA as to the accuracy, completeness, sufficiency or otherwise of this drawing and the position of the apparatus. The information contained herein does not purport to be comprehensive or final as the apparatus is subject to being altered and/or superceded. Recipients should not rely on this information. Any liabilities are hereby expressly disclaimed.
 e. The information contained herein has been provided by the NTA but does not purport to be comprehensive or final. Recipients should not rely on the information. Neither the NTA nor any of its directors, officers, employees, agents, stakeholders or advisers make any representation or warranty as to, or accept any liability or responsibility in relation to, the adequacy, accuracy, reasonableness or completeness of the information provided as part of this document or any matter on which the information is based (including but not limited to loss or damage arising as a result of reliance by recipients on the information or any part of it). Any liabilities are hereby expressly disclaimed.



Rev	Date	Drn	Chk'd	App'd	Description
M01	FEB 2023	JBB	EFD	SMG	ISSUE FOR PHASE 4: PLANNING

Client: **NTA**
 Údarás Náisiúnta Iompair
 National Transport Authority

Engineering Designer: **CIROD**
 TYPISA

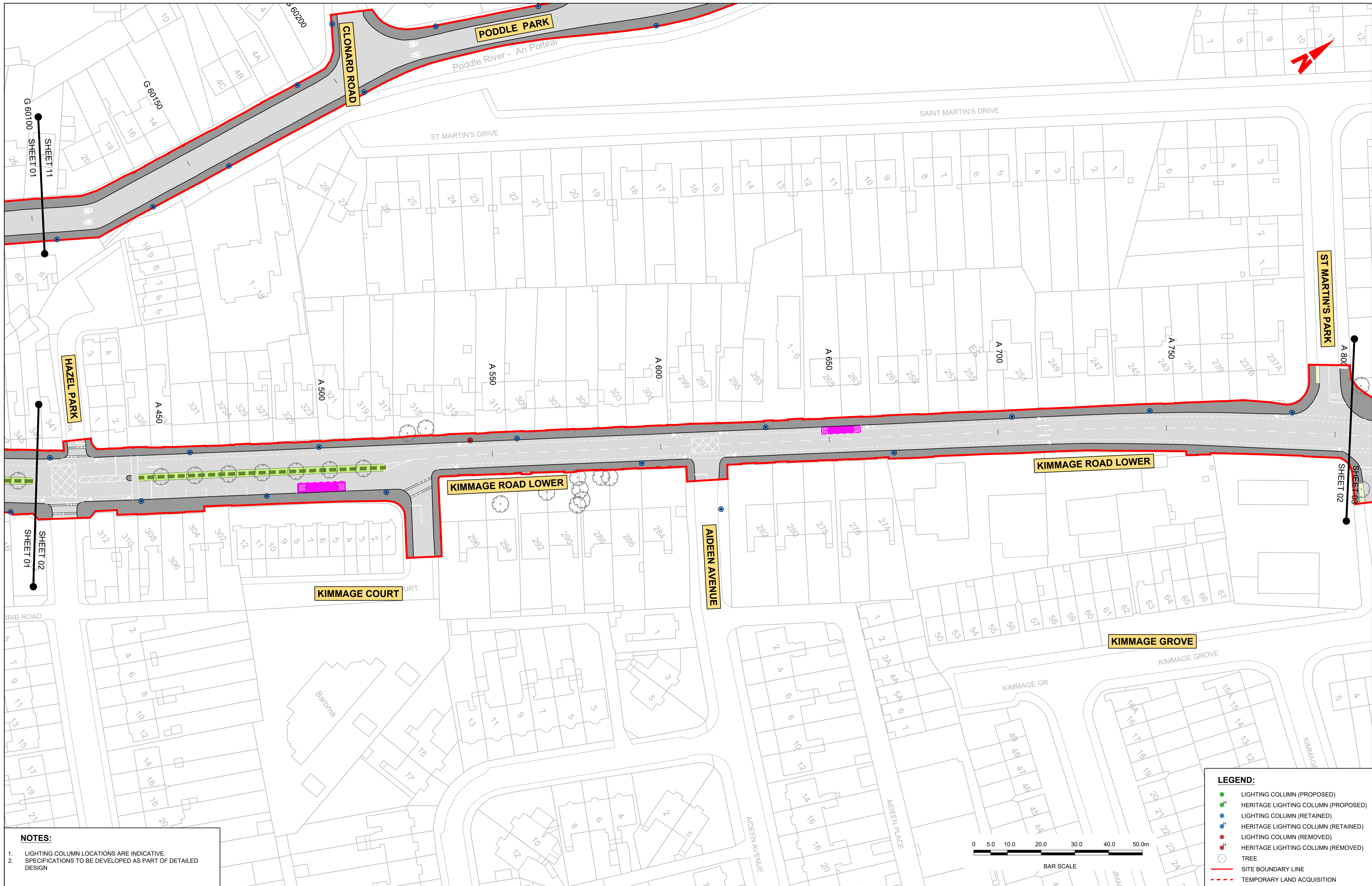
Date: FEB 2023
 Scale: 1:500 @ A1
 1:1000 @ A3

Drawn: JBB
 Checked: EFD
 Approved: SMG

Programme Code: BCIDD
 Originator Code: ROT
 QMS Code:

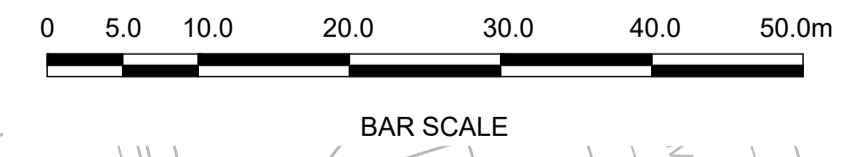
Programme Title: BUSCONNECTS DUBLIN			
CORE BUS CORRIDORS INFRASTRUCTURE WORKS			
Drawing Title: KIMMAGE TO CITY CENTRE SCHEME PUBLIC LIGHTING LAYOUT			
Drawing File Name: BCIDD-ROT-LHT_RL-0011_XX_00-DR-EO-0001	Sheet Number: 01 of 14	Status: A	Rev: M01

DO NOT SCALE USE FIGURED DIMENSIONS ONLY



NOTES:

- LIGHTING COLUMN LOCATIONS ARE INDICATIVE.
- SPECIFICATIONS TO BE DEVELOPED AS PART OF DETAILED DESIGN



LEGEND:

- LIGHTING COLUMN (PROPOSED)
- HERITAGE LIGHTING COLUMN (PROPOSED)
- LIGHTING COLUMN (RETAINED)
- HERITAGE LIGHTING COLUMN (RETAINED)
- LIGHTING COLUMN (REMOVED)
- HERITAGE LIGHTING COLUMN (REMOVED)
- TREE
- SITE BOUNDARY LINE
- TEMPORARY LAND ACQUISITION

Disclaimer
 a. © National Transport Authority (NTA) 2022. This drawing is confidential and the copyright in it is owned by NTA. This drawing must not be either loaned, copied or otherwise reproduced in whole or in part or used for any purpose without the prior permission of NTA.
 b. This drawing is to be used for the design element identified in the title block. Other information shown is to be considered indicative only. The drawing is to be read in conjunction with all other relevant design drawings.
 c. O.S. data used for plans are printed under © Ordnance Survey Ireland Government of Ireland. All rights reserved. Licence Number 2022/OSI_NMA_180 National Transport Authority. All elevations are in metres and relate to OSI Geoid Model (OSGM15) Mean Head. All Co-ordinates are in Irish Transverse Mercator Grid (ITM) as defined by OSI active local GPS station.
 d. Information concerning the position of apparatus shown on this drawing is based on drawings supplied by the utility owners and/or the utility works contractor, whilst every care has been taken in the preparation of this drawing, positions should be taken as approximate and are intended for general guidance only and no representation is made by the NTA as to the accuracy, completeness, sufficiency or otherwise of this drawing and the position of the apparatus. The information contained herein does not purport to be comprehensive or final as the apparatus is subject to being altered and/or superceded. Recipients should not rely on this information. Any liabilities are hereby expressly disclaimed.

The information contained herein has been provided by the NTA but does not purport to be comprehensive or final. Recipients should not rely on the information. Neither the NTA nor any of its directors, officers, employees, agents, stakeholders or advisers make any representation or warranty as to, or accept any liability or responsibility in relation to, the adequacy, accuracy, reasonableness or completeness of the information provided as part of this document or any matter on which the information is based (including but not limited to loss or damage arising as a result of reliance by recipients on the information or any part of it). Any liabilities are hereby expressly disclaimed.



Rev	Date	Drn	Chk'd	App'd	Description
M01	FEB 2023	JBB	EFD	SMG	ISSUE FOR PHASE 4: PLANNING

Client
NTA
 Údarás Náisiúnta Iompair
 National Transport Authority

Engineering Designer
CIROD
 TYPSA

Date	Scale	Drawn	Checked	Approved
FEB 2023	1:500 @ A1 1:1000 @ A3	JBB	EFD	SMG

Programme Title
BUSCONNECTS DUBLIN
CORE BUS CORRIDORS INFRASTRUCTURE WORKS

Drawing Title
 KIMMAGE TO CITY CENTRE SCHEME
 PUBLIC LIGHTING LAYOUT

Drawing File Name	Sheet Number	Status	Rev
BCIDD-ROT-LHT_RL-0011_XX_00-DR-EO-0002	02 of 14	A	M01

DO NOT SCALE USE FIGURED DIMENSIONS ONLY



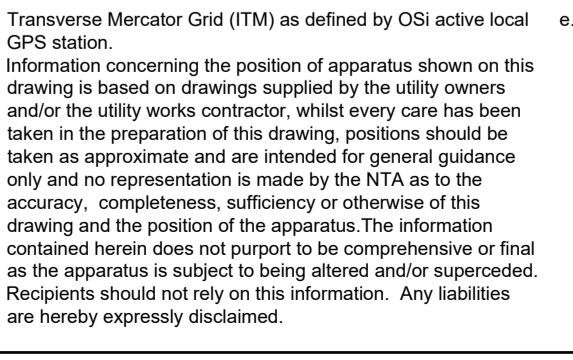
LEGEND:

- LIGHTING COLUMN (PROPOSED)
- HERITAGE LIGHTING COLUMN (PROPOSED)
- LIGHTING COLUMN (RETAINED)
- HERITAGE LIGHTING COLUMN (RETAINED)
- LIGHTING COLUMN (REMOVED)
- HERITAGE LIGHTING COLUMN (REMOVED)
- TREE
- SITE BOUNDARY LINE
- TEMPORARY LAND ACQUISITION

NOTES:

- LIGHTING COLUMN LOCATIONS ARE INDICATIVE.
- SPECIFICATIONS TO BE DEVELOPED AS PART OF DETAILED DESIGN

Disclaimer
 a. © National Transport Authority (NTA) 2022. This drawing is confidential and the copyright in it is owned by NTA. This drawing must not be either loaned, copied or otherwise reproduced in whole or in part or used for any purpose without the prior permission of NTA.
 b. This drawing is to be used for the design element identified in the title block. Other information shown is to be considered indicative only. The drawing is to be read in conjunction with all other relevant design drawings.
 c. O.S. data used for plans are printed under © Ordnance Survey Ireland Government of Ireland. All rights reserved. Licence Number 2022/OSI_NMA_180 National Transport Authority. All elevations are in metres and relate to OSI Grid Model (OSGM15) Mean Head. All Co-ordinates are in Irish Transverse Mercator Grid (ITM) as defined by OSI active local GPS station.
 d. Information concerning the position of apparatus shown on this drawing is based on drawings supplied by the utility owners and/or the utility works contractor, whilst every care has been taken in the preparation of this drawing, positions should be taken as approximate and are intended for general guidance only and no representation is made by the NTA as to the accuracy, completeness, sufficiency or otherwise of this information. The information contained herein does not purport to be comprehensive or final as the apparatus is subject to being altered and/or superceded. Recipients should not rely on this information. Any liabilities are hereby expressly disclaimed.
 e. The information contained herein has been provided by the NTA but does not purport to be comprehensive or final. Recipients should not rely on the information. Neither the NTA nor any of its directors, officers, employees, agents, stakeholders or advisers make any representation or warranty as to, or accept any liability or responsibility in relation to, the adequacy, accuracy, reasonableness or completeness of the information provided as part of this document or any matter on which the information is based (including but not limited to loss or damage arising as a result of reliance by recipients on the information or any part of it). Any liabilities are hereby expressly disclaimed.



Rev	Date	Drn	Chk'd	App'd	Description
M01	FEB 2023	JBB	EFD	SMG	ISSUE FOR PHASE 4: PLANNING

Client: **NTA**
 Údarás Náisiúnta Iompair
 National Transport Authority

Date: FEB 2023
 Scale: 1:500 @ A1
 1:1000 @ A3

Programme Code: BCIDD
 Originator Code: ROT

Engineering Designer: **CIROD**
 TYPSA

Drawn: JBB
 Checked: EFD
 Approved: SMG

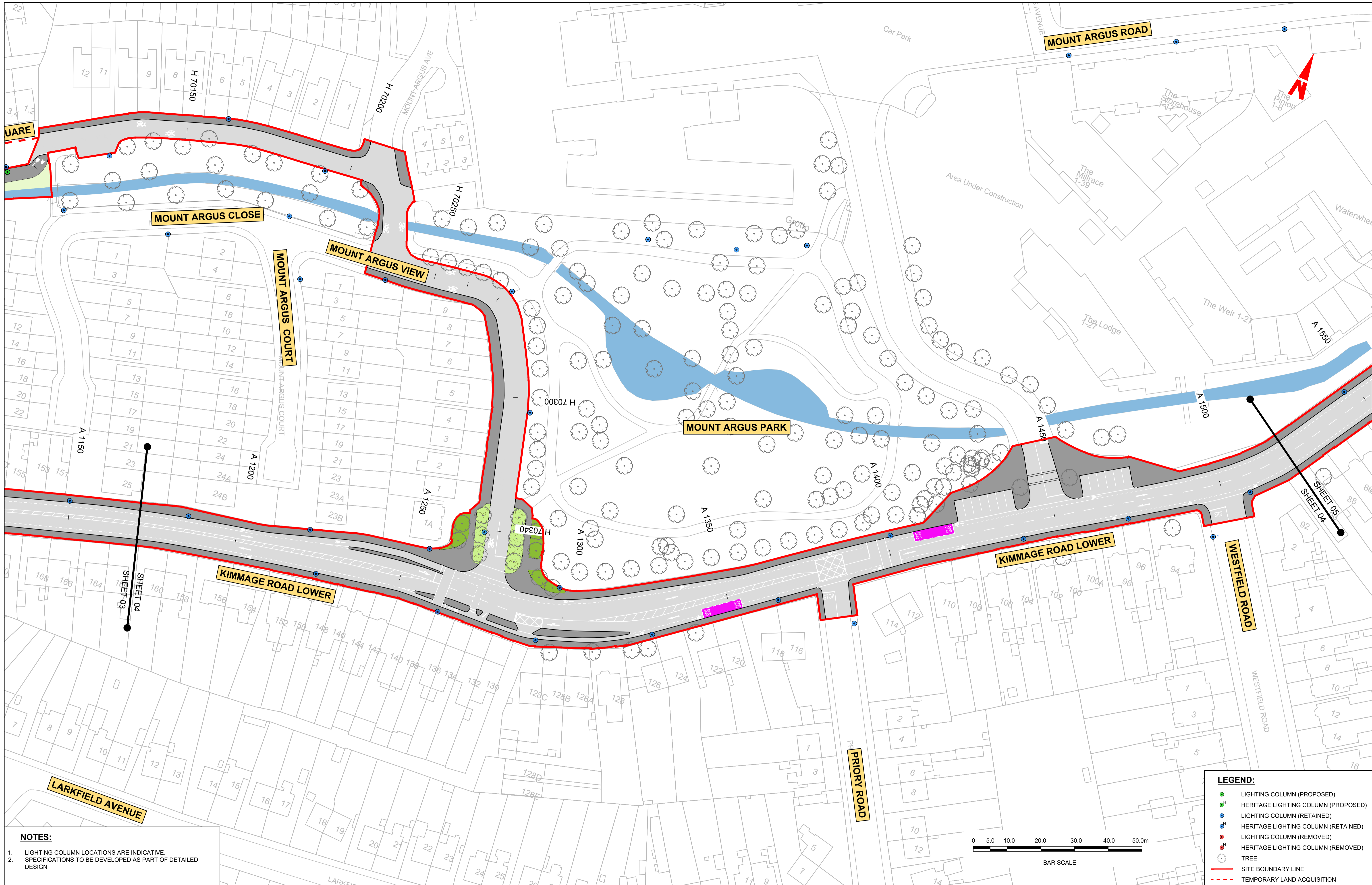
Rev	Date	Drn	Chk'd	App'd	Description
M01	FEB 2023	JBB	EFD	SMG	ISSUE FOR PHASE 4: PLANNING

Programme Title: **BUSCONNECTS DUBLIN**
CORE BUS CORRIDORS INFRASTRUCTURE WORKS

Drawing Title: **KIMMAGE TO CITY CENTRE SCHEME**
PUBLIC LIGHTING LAYOUT

Drawing File Name: BCIDD-ROT-LHT_RL-0011_XX_00-DR-EO-0003
 Sheet Number: 03 of 14
 Status: A
 Rev: M01

DO NOT SCALE USE FIGURED DIMENSIONS ONLY



NOTES:

- LIGHTING COLUMN LOCATIONS ARE INDICATIVE.
- SPECIFICATIONS TO BE DEVELOPED AS PART OF DETAILED DESIGN

LEGEND:

- LIGHTING COLUMN (PROPOSED)
- HERITAGE LIGHTING COLUMN (PROPOSED)
- LIGHTING COLUMN (RETAINED)
- HERITAGE LIGHTING COLUMN (RETAINED)
- LIGHTING COLUMN (REMOVED)
- HERITAGE LIGHTING COLUMN (REMOVED)
- TREE
- SITE BOUNDARY LINE
- TEMPORARY LAND ACQUISITION

Disclaimer
 a. © National Transport Authority (NTA) 2022. This drawing is confidential and the copyright in it is owned by NTA. This drawing must not be either loaned, copied or otherwise reproduced in whole or in part or used for any purpose without the prior permission of NTA.
 b. This drawing is to be used for the design element identified in the titlebox. Other information shown is to be considered indicative only. The drawing is to be read in conjunction with all other relevant design drawings.
 c. O.S. data used for plans are printed under © Ordnance Survey Ireland Government of Ireland. All rights reserved. Licence Number 2022/OSI_NMA_180 National Transport Authority. All elevations are in metres and relate to OSI Geoid Model (OSGM15) Mean Head. All Co-ordinates are in Irish Transverse Mercator Grid (ITM) as defined by OSI active local GPS station.
 d. Information concerning the position of apparatus shown on this drawing is based on drawings supplied by the utility owners and/or the utility works contractor, whilst every care has been taken in the preparation of this drawing, positions should be taken as approximate and are intended for general guidance only and no representation is made by the NTA as to the accuracy, completeness, sufficiency or otherwise of this drawing and the position of the apparatus. The information contained herein does not purport to be comprehensive or final as the apparatus is subject to being altered and/or superceded. Recipients should not rely on this information. Any liabilities are hereby expressly disclaimed.

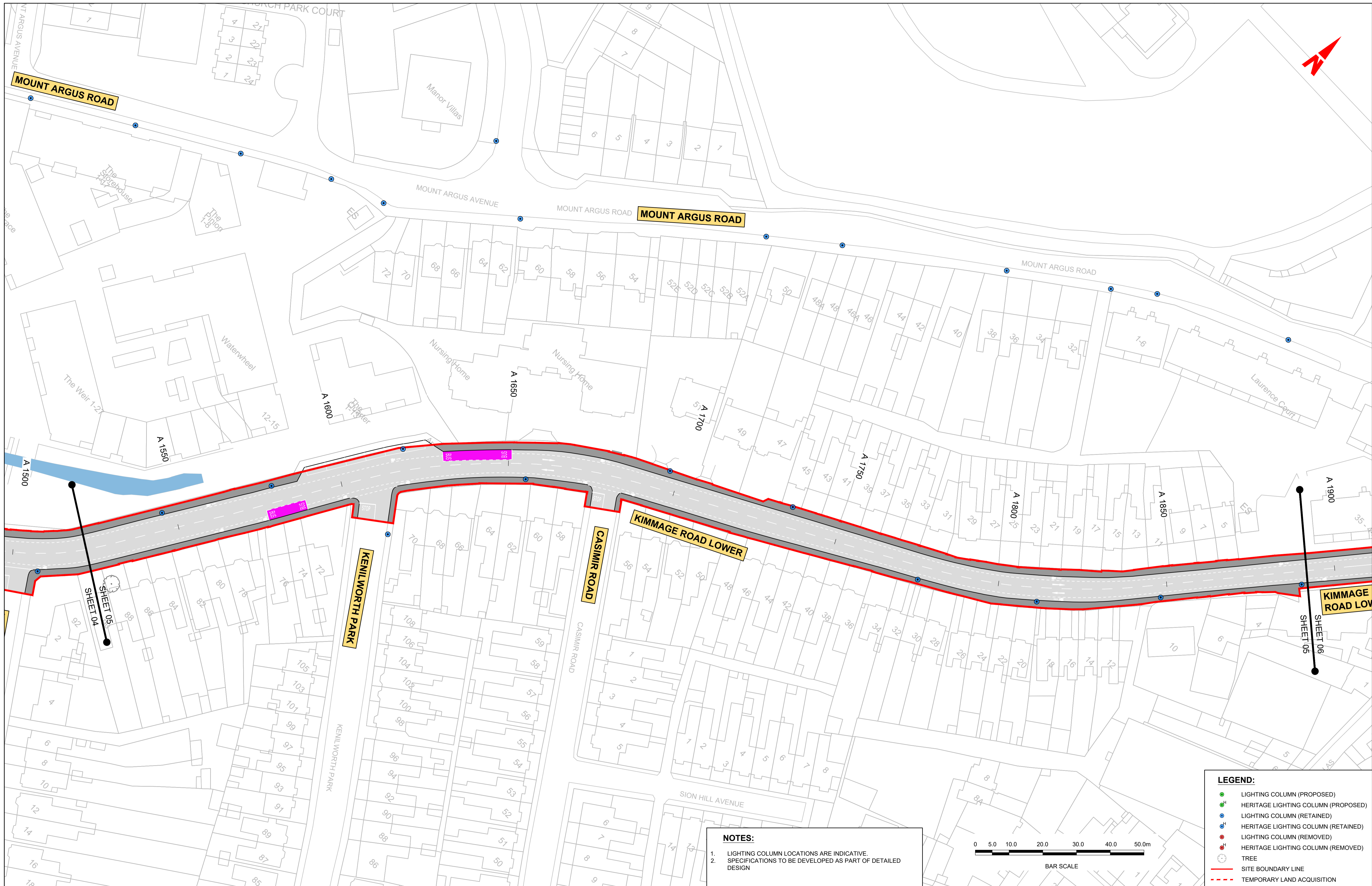
Project Ireland 2040
 Building Ireland's Future

Rev	Date	Drm	Chk'd	App'd	Description
M01	FEB 2023	JBB	EFD	SMG	ISSUE FOR PHASE 4: PLANNING

Client NTA Údarás Náisiúnta Iompair National Transport Authority		Engineering Designer PROD TYPSA		
Date FEB 2023	Scale 1:500 @ A1 1:1000 @ A3	Drawn JBB	Checked EFD	Approved SMG
Programme Code BCIDD	Originator Code ROT	QMS Code		

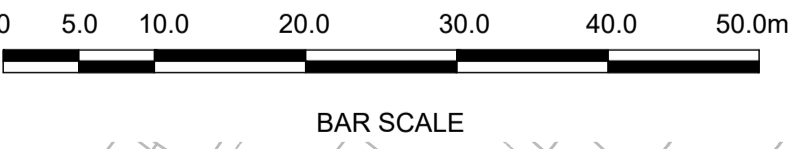
Programme Title BUSCONNECTS DUBLIN CORE BUS CORRIDORS INFRASTRUCTURE WORKS			
Drawing Title KIMMAGE TO CITY CENTRE SCHEME PUBLIC LIGHTING LAYOUT			
Drawing File Name BCIDD-ROT-LHT_RL-0011_XX_00-DR-EO-004	Sheet Number 04 of 14	Status A	Rev M01

DO NOT SCALE USE FIGURED DIMENSIONS ONLY



NOTES:

- LIGHTING COLUMN LOCATIONS ARE INDICATIVE.
- SPECIFICATIONS TO BE DEVELOPED AS PART OF DETAILED DESIGN



LEGEND:

- LIGHTING COLUMN (PROPOSED)
- ^H HERITAGE LIGHTING COLUMN (PROPOSED)
- LIGHTING COLUMN (RETAINED)
- ^H HERITAGE LIGHTING COLUMN (RETAINED)
- LIGHTING COLUMN (REMOVED)
- ^H HERITAGE LIGHTING COLUMN (REMOVED)
- TREE
- SITE BOUNDARY LINE
- TEMPORARY LAND ACQUISITION

Disclaimer

a. © National Transport Authority (NTA) 2022. This drawing is confidential and the copyright in it is owned by NTA. This drawing must not be either loaned, copied or otherwise reproduced in whole or in part or used for any purpose without the prior permission of NTA.

b. This drawing is to be used for the design element identified in the title block. Other information shown is to be considered indicative only. The drawing is to be read in conjunction with all other relevant design drawings.

c. O.S. data used for plans are printed under © Ordnance Survey Ireland Government of Ireland. All rights reserved. Licence Number 2022/OSI_NMA_180 National Transport Authority. All elevations are in metres and relate to OSI Geoid Model (OSGM15) Mean Head. All Co-ordinates are in Irish

Transverse Mercator Grid (ITM) as defined by OSI active local GPS station.

d. Information concerning the position of apparatus shown on this drawing is based on drawings supplied by the utility owners and/or the utility works contractor, whilst every care has been taken in the preparation of this drawing, positions should be taken as approximate and are intended for general guidance only and no representation is made by the NTA as to the accuracy, completeness, sufficiency or otherwise of this drawing and the position of the apparatus. The information contained herein does not purport to be comprehensive or final as the apparatus is subject to being altered and/or superceded. Recipients should not rely on this information. Any liabilities are hereby expressly disclaimed.

e. The information contained herein has been provided by the NTA but does not purport to be comprehensive or final. Recipients should not rely on the information. Neither the NTA nor any of its directors, officers, employees, agents, stakeholders or advisers make any representation or warranty as to, or accept any liability or responsibility in relation to, the adequacy, accuracy, reasonableness or completeness of the information provided as part of this document or any matter on which the information is based (including but not limited to loss or damage arising as a result of reliance by recipients on the information or any part of it). Any liabilities are hereby expressly disclaimed.



Rev	Date	Drn	Chk'd	App'd	Description
M01	FEB 2023	JBB	EFD	SMG	ISSUE FOR PHASE 4: PLANNING

Client

Údarás Náisiúnta Iompair
National Transport Authority

Engineering Designer

Drawn	Checked	Approved
JBB	EFD	SMG

Programme Title

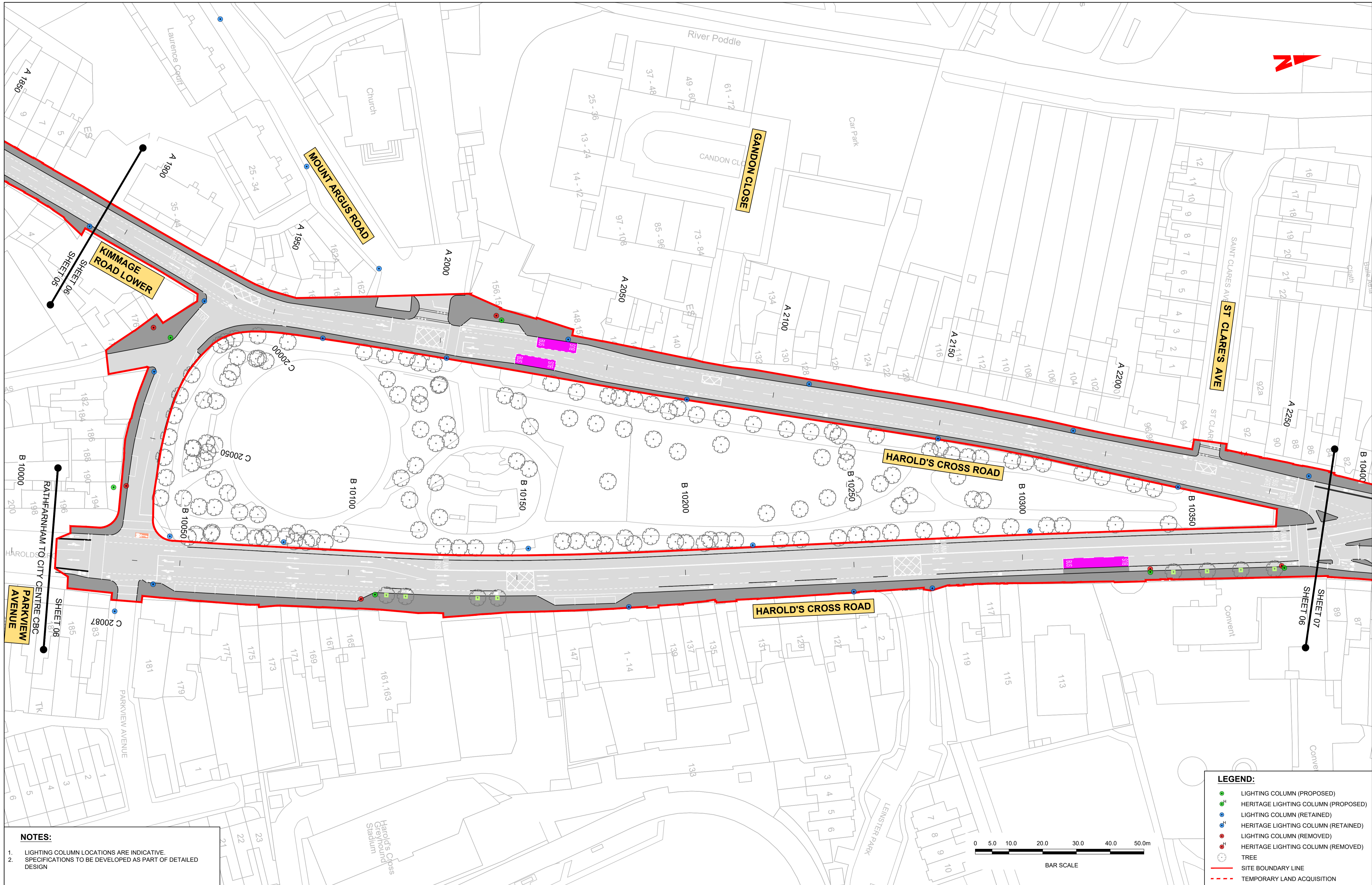
**BUSCONNECTS DUBLIN
CORE BUS CORRIDORS INFRASTRUCTURE WORKS**

Drawing Title

KIMMAGE TO CITY CENTRE SCHEME
PUBLIC LIGHTING LAYOUT

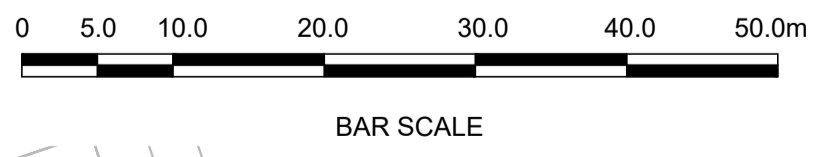
Drawing File Name	Sheet Number	Status	Rev
BCIDD-ROT-LHT_RL-0011_XX_00-DR-EO-0005	05 of 14	A	M01

DO NOT SCALE USE FIGURED DIMENSIONS ONLY



- NOTES:**
- LIGHTING COLUMN LOCATIONS ARE INDICATIVE.
 - SPECIFICATIONS TO BE DEVELOPED AS PART OF DETAILED DESIGN

- LEGEND:**
- LIGHTING COLUMN (PROPOSED)
 - HERITAGE LIGHTING COLUMN (PROPOSED)
 - LIGHTING COLUMN (RETAINED)
 - HERITAGE LIGHTING COLUMN (RETAINED)
 - LIGHTING COLUMN (REMOVED)
 - HERITAGE LIGHTING COLUMN (REMOVED)
 - TREE
 - SITE BOUNDARY LINE
 - - - TEMPORARY LAND ACQUISITION



Disclaimer
 a. © National Transport Authority (NTA) 2022. This drawing is confidential and the copyright in it is owned by NTA. This drawing must not be either loaned, copied or otherwise reproduced in whole or in part or used for any purpose without the prior permission of NTA.
 b. This drawing is to be used for the design element identified in the title block. Other information shown is to be considered indicative only. The drawing is to be read in conjunction with all other relevant design drawings.
 c. O.S. data used for plans are printed under © Ordnance Survey Ireland Government of Ireland. All rights reserved. Licence Number 2022/OSI_NMA_180 National Transport Authority. All elevations are in metres and relate to OSI Geoid Model (OSGM15) Mean Head. All Co-ordinates are in Irish

Transverse Mercator Grid (ITM) as defined by OSI active local GPS station.
 d. Information concerning the position of apparatus shown on this drawing is based on drawings supplied by the utility owners and/or the utility works contractor, whilst every care has been taken in the preparation of this drawing, positions should be taken as approximate and are intended for general guidance only and no representation is made by the NTA as to the accuracy, completeness, sufficiency or otherwise of this drawing and the position of the apparatus. The information contained herein does not purport to be comprehensive or final as the apparatus is subject to being altered and/or superceded. Recipients should not rely on this information. Any liabilities are hereby expressly disclaimed.

e. The information contained herein has been provided by the NTA but does not purport to be comprehensive or final. Recipients should not rely on the information. Neither the NTA nor any of its directors, officers, employees, agents, stakeholders or advisers make any representation or warranty as to, or accept any liability or responsibility in relation to, the adequacy, accuracy, reasonableness or completeness of the information provided as part of this document or any matter on which the information is based (including but not limited to loss or damage arising as a result of reliance by recipients on the information or any part of it). Any liabilities are hereby expressly disclaimed.



Rev	Date	Drn	Chk'd	App'd	Description
M01	FEB 2023	JBB	EFD	SMG	ISSUE FOR PHASE 4: PLANNING

Client
NTA
 Údarás Náisiúnta Iompair
 National Transport Authority

Engineering Designer
PROD
 TYPISA

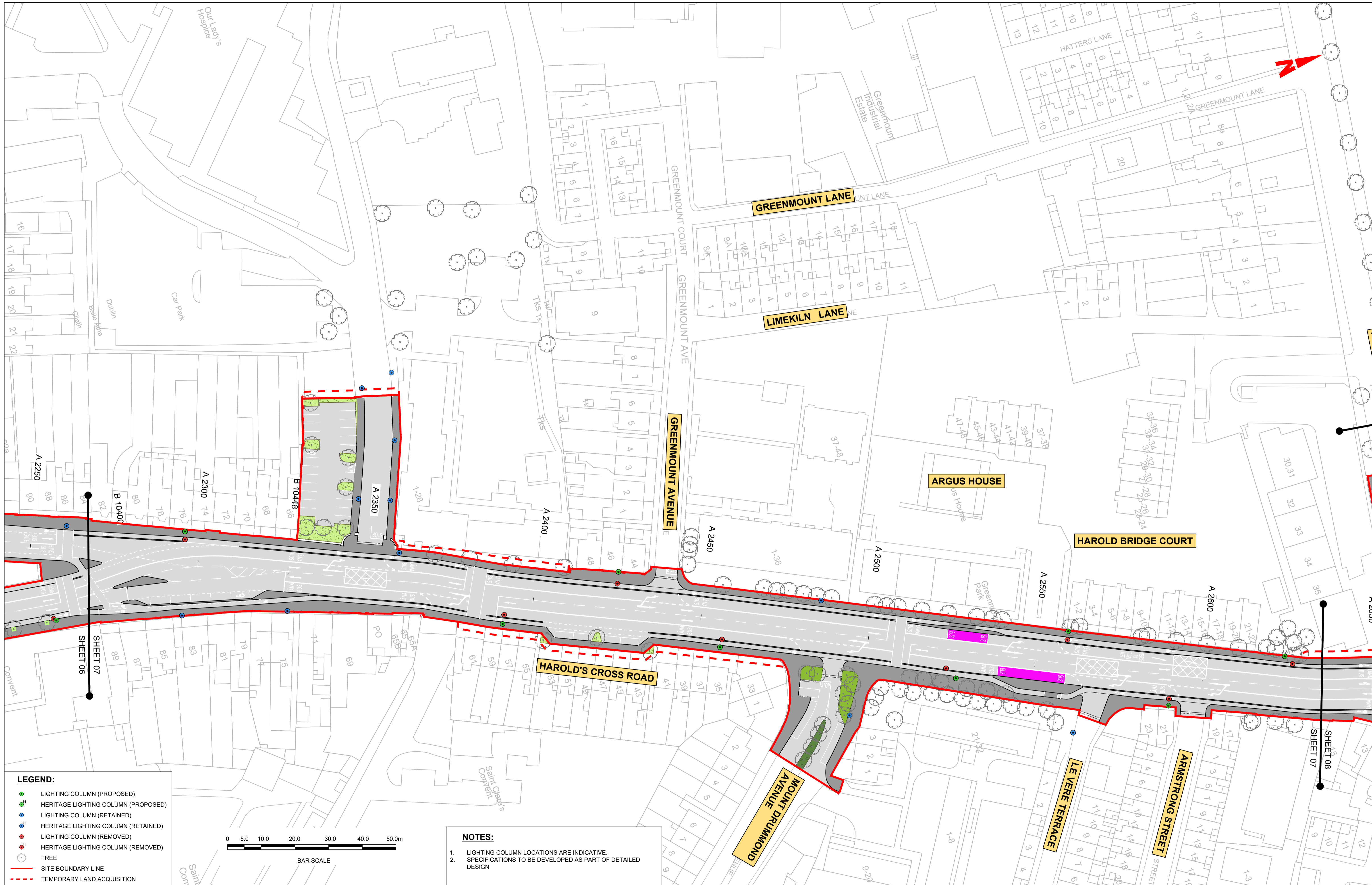
Programme Title
BUSCONNECTS DUBLIN
CORE BUS CORRIDORS INFRASTRUCTURE WORKS

Drawing Title
 KIMMAGE TO CITY CENTRE SCHEME
 PUBLIC LIGHTING LAYOUT

Date: FEB 2023
 Scale: 1:500 @ A1, 1:1000 @ A3
 Drawn: JBB
 Checked: EFD
 Approved: SMG

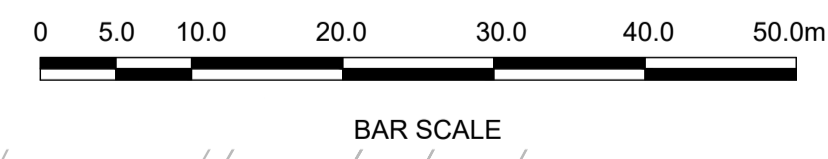
Programme Code: BCIDD
 Originator Code: ROT
 QMS Code:

Drawing File Name: BCIDD-ROT-LHT_RL-0011_XX_00-DR-EO-0006
 Sheet Number: 06 of 14
 Status: A
 Rev: M01



LEGEND:

- LIGHTING COLUMN (PROPOSED)
- HERITAGE LIGHTING COLUMN (PROPOSED)
- LIGHTING COLUMN (RETAINED)
- HERITAGE LIGHTING COLUMN (RETAINED)
- LIGHTING COLUMN (REMOVED)
- HERITAGE LIGHTING COLUMN (REMOVED)
- TREE
- SITE BOUNDARY LINE
- TEMPORARY LAND ACQUISITION



NOTES:

- LIGHTING COLUMN LOCATIONS ARE INDICATIVE.
- SPECIFICATIONS TO BE DEVELOPED AS PART OF DETAILED DESIGN

Disclaimer
 a. © National Transport Authority (NTA) 2022. This drawing is confidential and the copyright in it is owned by NTA. This drawing must not be either loaned, copied or otherwise reproduced in whole or in part or used for any purpose without the prior permission of NTA.
 b. This drawing is to be used for the design element identified in the titlebox. Other information shown is to be considered indicative only. The drawing is to be read in conjunction with all other relevant design drawings.
 c. O.S. data used for plans are printed under © Ordnance Survey Ireland Government of Ireland. All rights reserved. Licence Number 2022/OSI_NMA_180 National Transport Authority. All elevations are in metres and relate to OSI Geoid Model (OSGM15) Mean Head. All Co-ordinates are in Irish Transverse Mercator Grid (ITM) as defined by OSI active local GPS station.
 d. Information concerning the position of apparatus shown on this drawing is based on drawings supplied by the utility owners and/or the utility works contractor, whilst every care has been taken in the preparation of this drawing, positions should be taken as approximate and are intended for general guidance only and no representation is made by the NTA as to the accuracy, completeness, sufficiency or otherwise of this drawing and the position of the apparatus. The information contained herein does not purport to be comprehensive or final as the apparatus is subject to being altered and/or superceded. Recipients should not rely on this information. Any liabilities are hereby expressly disclaimed.
 e. The information contained herein has been provided by the NTA but does not purport to be comprehensive or final. Recipients should not rely on the information. Neither the NTA nor any of its directors, officers, employees, agents, stakeholders or advisers make any representation or warranty as to, or accept any liability or responsibility in relation to, the adequacy, accuracy, reasonableness or completeness of the information provided as part of this document or any matter on which the information is based (including but not limited to loss or damage arising as a result of reliance by recipients on the information or any part of it). Any liabilities are hereby expressly disclaimed.



Rev	Date	Drn	Chk'd	App'd	Description
M01	FEB 2023	JBB	EFD	SMG	ISSUE FOR PHASE 4: PLANNING

Client: **NTA**
 Údarás Náisiúnta Iompair
 National Transport Authority

Engineering Designer: **CIROD**
 TYPSA

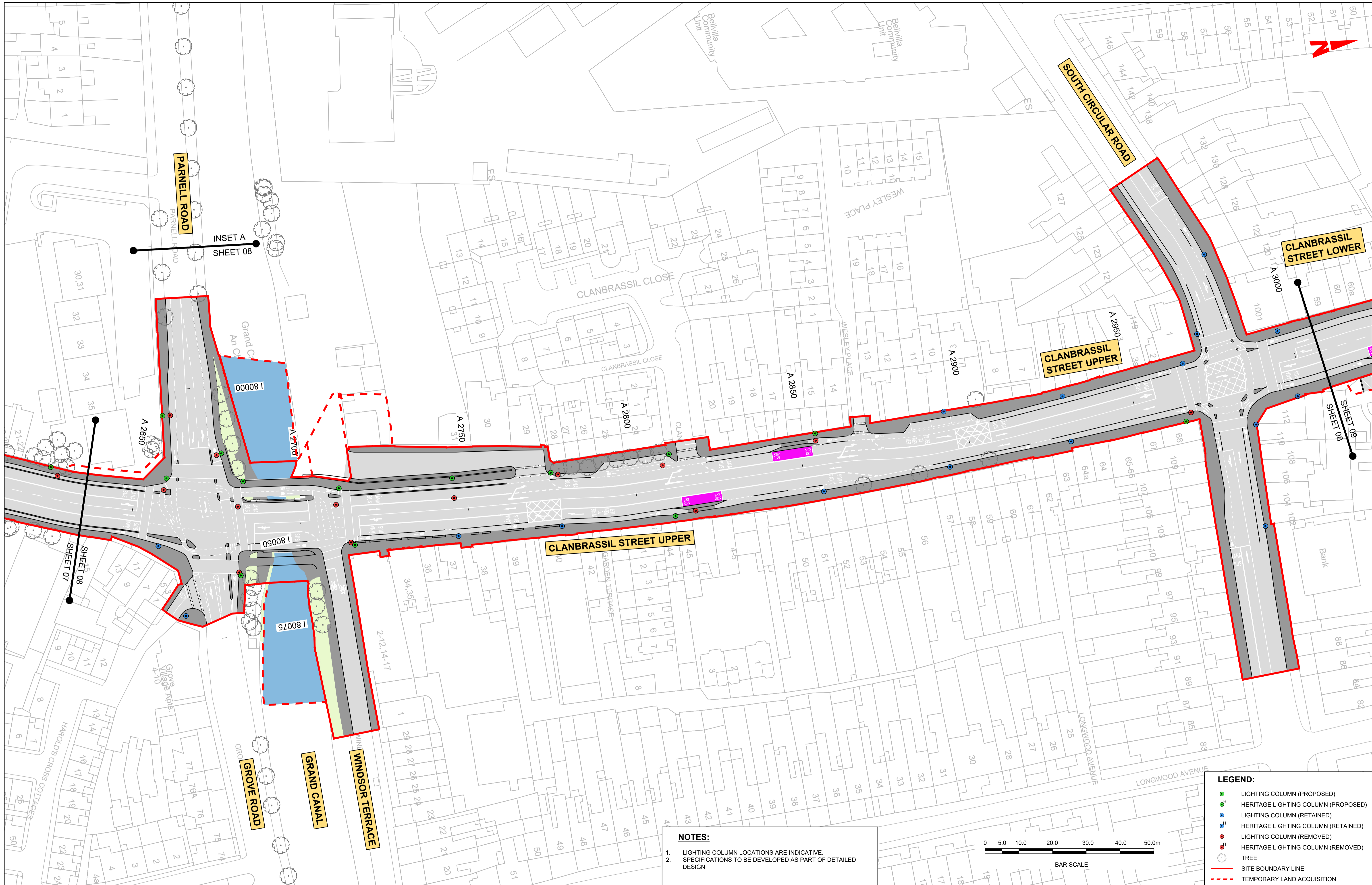
Date: FEB 2023
 Scale: 1:500 @ A1
 1:1000 @ A3

Drawn: JBB
 Checked: EFD
 Approved: SMG

Programme Code: BCIDD
 Originator Code: ROT
 QMS Code:

Programme Title: BUSCONNECTS DUBLIN			
CORE BUS CORRIDORS INFRASTRUCTURE WORKS			
Drawing Title: KIMMAGE TO CITY CENTRE SCHEME PUBLIC LIGHTING LAYOUT			
Drawing File Name: BCIDD-ROT-LHT_RL-0011_XX_00-DR-EO-0007	Sheet Number: 07 of 14	Status: A	Rev: M01

DO NOT SCALE USE FIGURED DIMENSIONS ONLY



INSET A
SHEET 08

SHEET 09

SHEET 07

NOTES:
 1. LIGHTING COLUMN LOCATIONS ARE INDICATIVE.
 2. SPECIFICATIONS TO BE DEVELOPED AS PART OF DETAILED DESIGN



LEGEND:

- LIGHTING COLUMN (PROPOSED)
- HERITAGE LIGHTING COLUMN (PROPOSED)
- LIGHTING COLUMN (RETAINED)
- HERITAGE LIGHTING COLUMN (RETAINED)
- LIGHTING COLUMN (REMOVED)
- HERITAGE LIGHTING COLUMN (REMOVED)
- TREE
- SITE BOUNDARY LINE
- TEMPORARY LAND ACQUISITION

Disclaimer
 a. © National Transport Authority (NTA) 2022. This drawing is confidential and the copyright in it is owned by NTA. This drawing must not be either loaned, copied or otherwise reproduced in whole or in part or used for any purpose without the prior permission of NTA.
 b. This drawing is to be used for the design element identified in the title block. Other information shown is to be considered indicative only. The drawing is to be read in conjunction with all other relevant design drawings.
 c. O.S. data used for plans are printed under © Ordnance Survey Ireland Government of Ireland. All rights reserved. Licence Number 2022/OSI_NMA_180 National Transport Authority. All elevations are in metres and relate to OSI Geoid Model (OSGM15) Mean Head. All Co-ordinates are in Irish Transverse Mercator Grid (ITM) as defined by OSI active local GPS station.
 d. Information concerning the position of apparatus shown on this drawing is based on drawings supplied by the utility owners and/or the utility works contractor, whilst every care has been taken in the preparation of this drawing, positions should be taken as approximate and are intended for general guidance only and no representation is made by the NTA as to the accuracy, completeness, sufficiency or otherwise of this drawing and the position of the apparatus. The information contained herein does not purport to be comprehensive or final as the apparatus is subject to being altered and/or superceded. Recipients should not rely on this information. Any liabilities are hereby expressly disclaimed.
 e. The information contained herein has been provided by the NTA but does not purport to be comprehensive or final. Recipients should not rely on the information. Neither the NTA nor any of its directors, officers, employees, agents, stakeholders or advisers make any representation or warranty as to, or accept any liability or responsibility in relation to, the adequacy, accuracy, reasonableness or completeness of the information provided as part of this document or any matter on which the information is based (including but not limited to loss or damage arising as a result of reliance by recipients on the information or any part of it). Any liabilities are hereby expressly disclaimed.

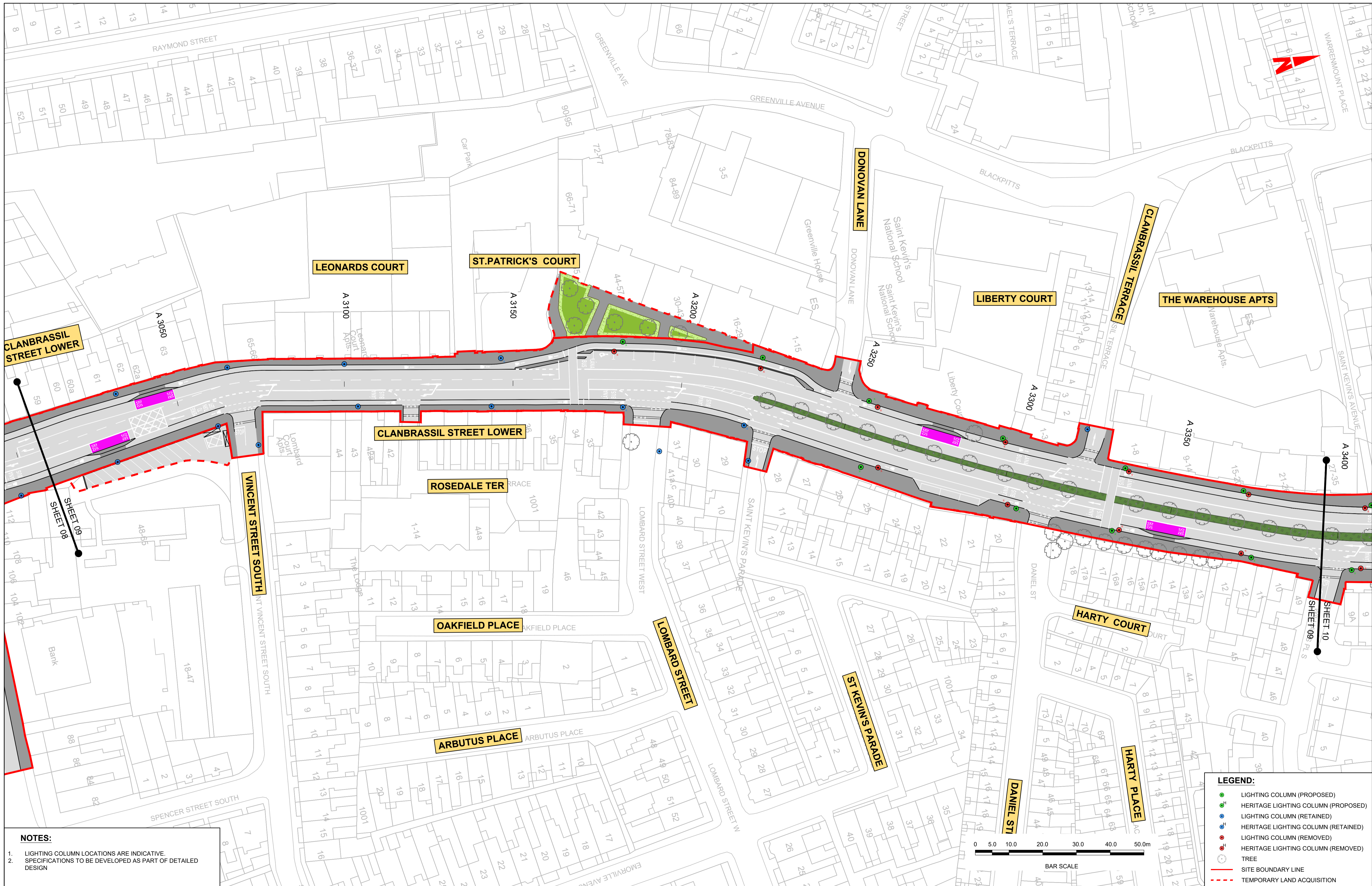


Rev	Date	Drm	Chk'd	App'd	Description
M01	FEB 2023	JBB	EFD	SMG	ISSUE FOR PHASE 4: PLANNING

Client NTA Údarás Náisiúnta Iompair National Transport Authority		Engineering Designer PROD TYPSA		
Date FEB 2023	Scale 1:500 @ A1 1:1000 @ A3	Drawn JBB	Checked EFD	Approved SMG
Programme Code BCIDD	Originator Code ROT	QMS Code		

Programme Title BUSCONNECTS DUBLIN CORE BUS CORRIDORS INFRASTRUCTURE WORKS			
Drawing Title KIMMAGE TO CITY CENTRE SCHEME PUBLIC LIGHTING LAYOUT			
Drawing File Name BCIDD-ROT-LHT_RL-0011_XX_00-DR-EO-0008	Sheet Number 08 of 14	Status A	Rev M01

DO NOT SCALE USE FIGURED DIMENSIONS ONLY



NOTES:

- LIGHTING COLUMN LOCATIONS ARE INDICATIVE.
- SPECIFICATIONS TO BE DEVELOPED AS PART OF DETAILED DESIGN

LEGEND:

- LIGHTING COLUMN (PROPOSED)
- HERITAGE LIGHTING COLUMN (PROPOSED)
- LIGHTING COLUMN (RETAINED)
- HERITAGE LIGHTING COLUMN (RETAINED)
- LIGHTING COLUMN (REMOVED)
- HERITAGE LIGHTING COLUMN (REMOVED)
- TREE
- SITE BOUNDARY LINE
- TEMPORARY LAND ACQUISITION

Disclaimer

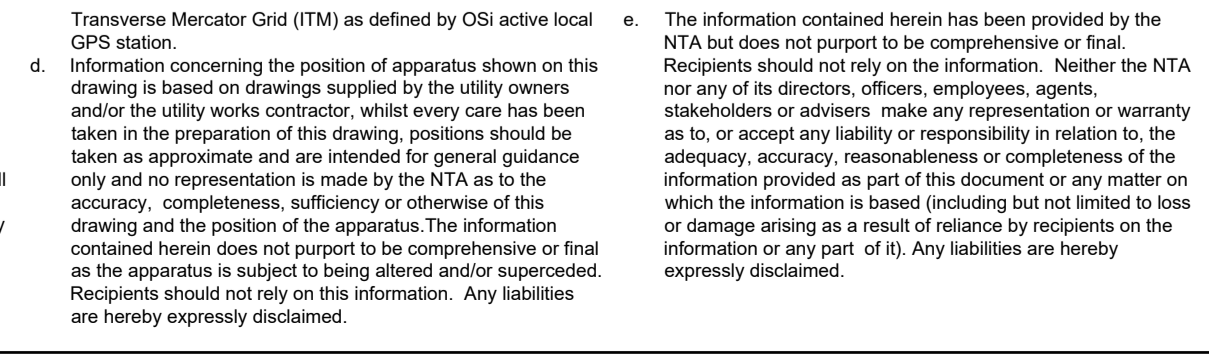
a. © National Transport Authority (NTA) 2022. This drawing is confidential and the copyright in it is owned by NTA. This drawing must not be either loaned, copied or otherwise reproduced in whole or in part or used for any purpose without the prior permission of NTA.

b. This drawing is to be used for the design element identified in the titleblock. Other information shown is to be considered indicative only. The drawing is to be read in conjunction with all other relevant design drawings.

c. O.S. data used for plans are printed under © Ordnance Survey Ireland Government of Ireland. All rights reserved. Licence Number 2022/OSI_NMA_180 National Transport Authority. All elevations are in metres and relate to OSI Geoid Model (OSGM15) Mean Head. All Co-ordinates are in Irish Transverse Mercator Grid (ITM) as defined by OSI active local GPS station.

d. Information concerning the position of apparatus shown on this drawing is based on drawings supplied by the utility owners and/or the utility works contractor, whilst every care has been taken in the preparation of this drawing, positions should be taken as approximate and are intended for general guidance only and no representation is made by the NTA as to the accuracy, completeness, sufficiency or otherwise of this drawing and the position of the apparatus. The information contained herein does not purport to be comprehensive or final as the apparatus is subject to being altered and/or superceded. Recipients should not rely on this information. Any liabilities are hereby expressly disclaimed.

e. The information contained herein has been provided by the NTA but does not purport to be comprehensive or final. Recipients should not rely on the information. Neither the NTA nor any of its directors, officers, employees, agents, stakeholders or advisers make any representation or warranty as to, or accept any liability or responsibility in relation to, the adequacy, accuracy, reasonableness or completeness of the information provided as part of this document or any matter on which the information is based (including but not limited to loss or damage arising as a result of reliance by recipients on the information or any part of it). Any liabilities are hereby expressly disclaimed.



Rev	Date	Drn	Chk'd	App'd	Description
M01	FEB 2023	JBB	EFD	SMG	ISSUE FOR PHASE 4: PLANNING

Client: **NTA**
Údarás Náisiúnta Iompair
National Transport Authority

Engineering Designer: **PROD**
TYPSA

Date: FEB 2023
Scale: 1:500 @ A1
1:1000 @ A3

Drawn: JBB
Checked: EFD
Approved: SMG

Programme Code: BCIDD
Originator Code: ROT

QMS Code:

Programme Title: **BUSCONNECTS DUBLIN**
CORE BUS CORRIDORS INFRASTRUCTURE WORKS

Drawing Title: KIMMAGE TO CITY CENTRE SCHEME
PUBLIC LIGHTING LAYOUT

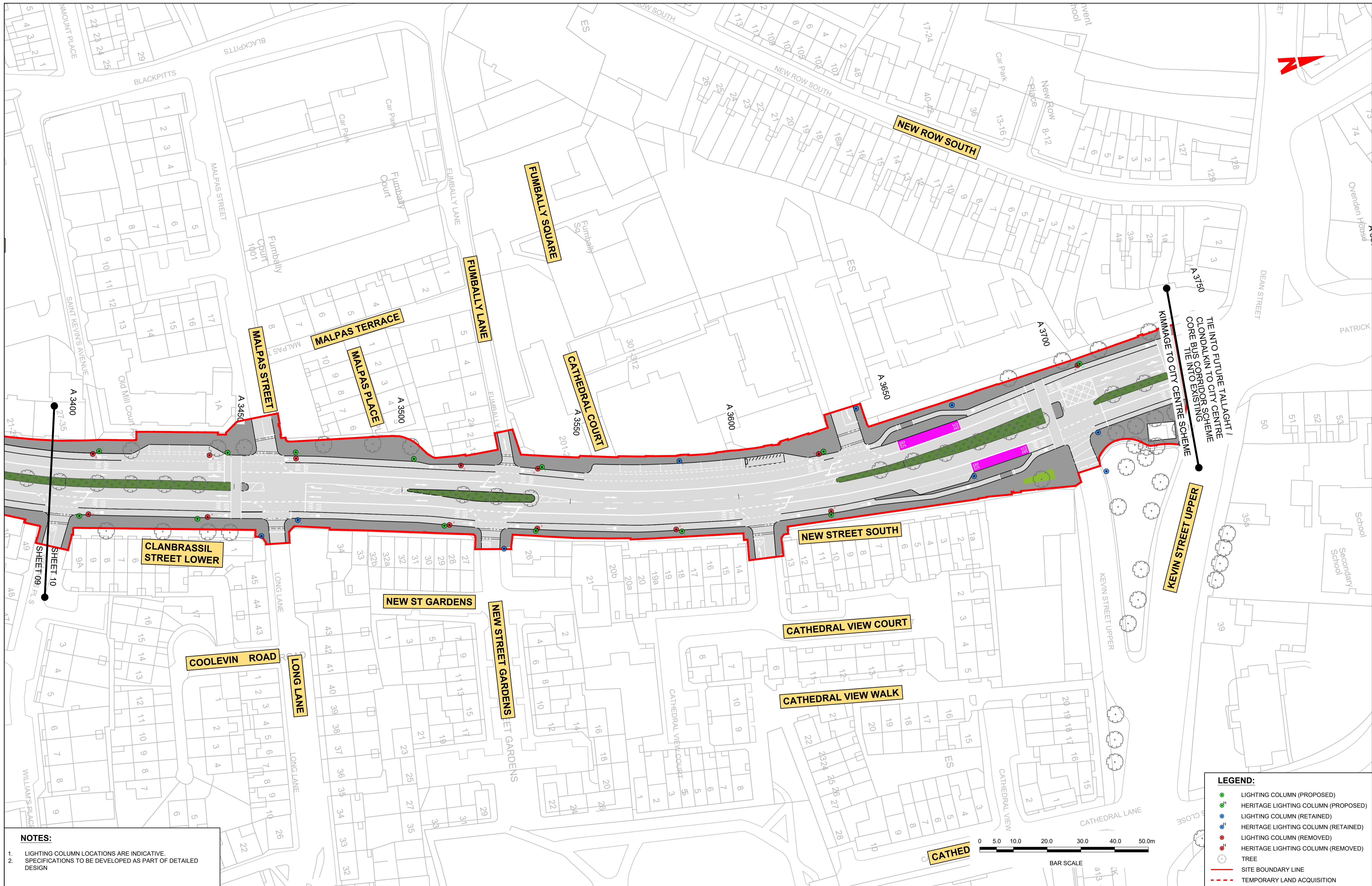
Drawing File Name: BCIDD-ROT-LHT_RL-0011_XX_00-DR-EO-0009

Sheet Number: 09 of 14

Status: A

Rev: M01

DO NOT SCALE USE FIGURED DIMENSIONS ONLY



- NOTES:**
- LIGHTING COLUMN LOCATIONS ARE INDICATIVE.
 - SPECIFICATIONS TO BE DEVELOPED AS PART OF DETAILED DESIGN

LEGEND:

- LIGHTING COLUMN (PROPOSED)
- HERITAGE LIGHTING COLUMN (PROPOSED)
- LIGHTING COLUMN (RETAINED)
- HERITAGE LIGHTING COLUMN (RETAINED)
- LIGHTING COLUMN (REMOVED)
- HERITAGE LIGHTING COLUMN (REMOVED)
- TREE
- SITE BOUNDARY LINE
- TEMPORARY LAND ACQUISITION



Disclaimer

a. © National Transport Authority (NTA) 2022. This drawing is confidential and the copyright in it is owned by NTA. This drawing must not be either loaned, copied or otherwise reproduced in whole or in part or used for any purpose without the prior permission of NTA.

b. This drawing is to be used for the design element identified in the titleblock. Other information shown is to be considered indicative only. The drawing is to be read in conjunction with all other relevant design drawings.

c. O.S. data used for plans are printed under © Ordnance Survey Ireland Government of Ireland. All rights reserved. Licence Number 2022/OSI_NMA_180 National Transport Authority. All elevations are in metres and relate to OSI Geoid Model (OSGM15) Mean Head. All Co-ordinates are in Irish Transverse Mercator Grid (ITM) as defined by OSI active local GPS station.

d. Information concerning the position of apparatus shown on this drawing is based on drawings supplied by the utility owners and/or the utility works contractor, whilst every care has been taken in the preparation of this drawing, positions should be taken as approximate and are intended for general guidance only and no representation is made by the NTA as to the accuracy, completeness, sufficiency or otherwise of this information. The information is subject to being altered and/or superseded. Recipients should not rely on this information. Any liabilities are hereby expressly disclaimed.

e. The information contained herein has been provided by the NTA but does not purport to be comprehensive or final. Recipients should not rely on the information. Neither the NTA nor any of its directors, officers, employees, agents, stakeholders or advisers make any representation or warranty as to, or accept any liability or responsibility in relation to, the adequacy, accuracy, reasonableness or completeness of the information provided as part of this document or any matter on which the information is based (including but not limited to loss or damage arising as a result of reliance by recipients on the information or any part of it). Any liabilities are hereby expressly disclaimed.



Rev	Date	Drn	Chk'd	App'd	Description
M01	FEB 2023	JBB	EFD	SMG	ISSUE FOR PHASE 4: PLANNING

Client: **NTA**
Údarás Náisiúnta Iompair
National Transport Authority

Engineering Designer: **CIROD**
TYPSA

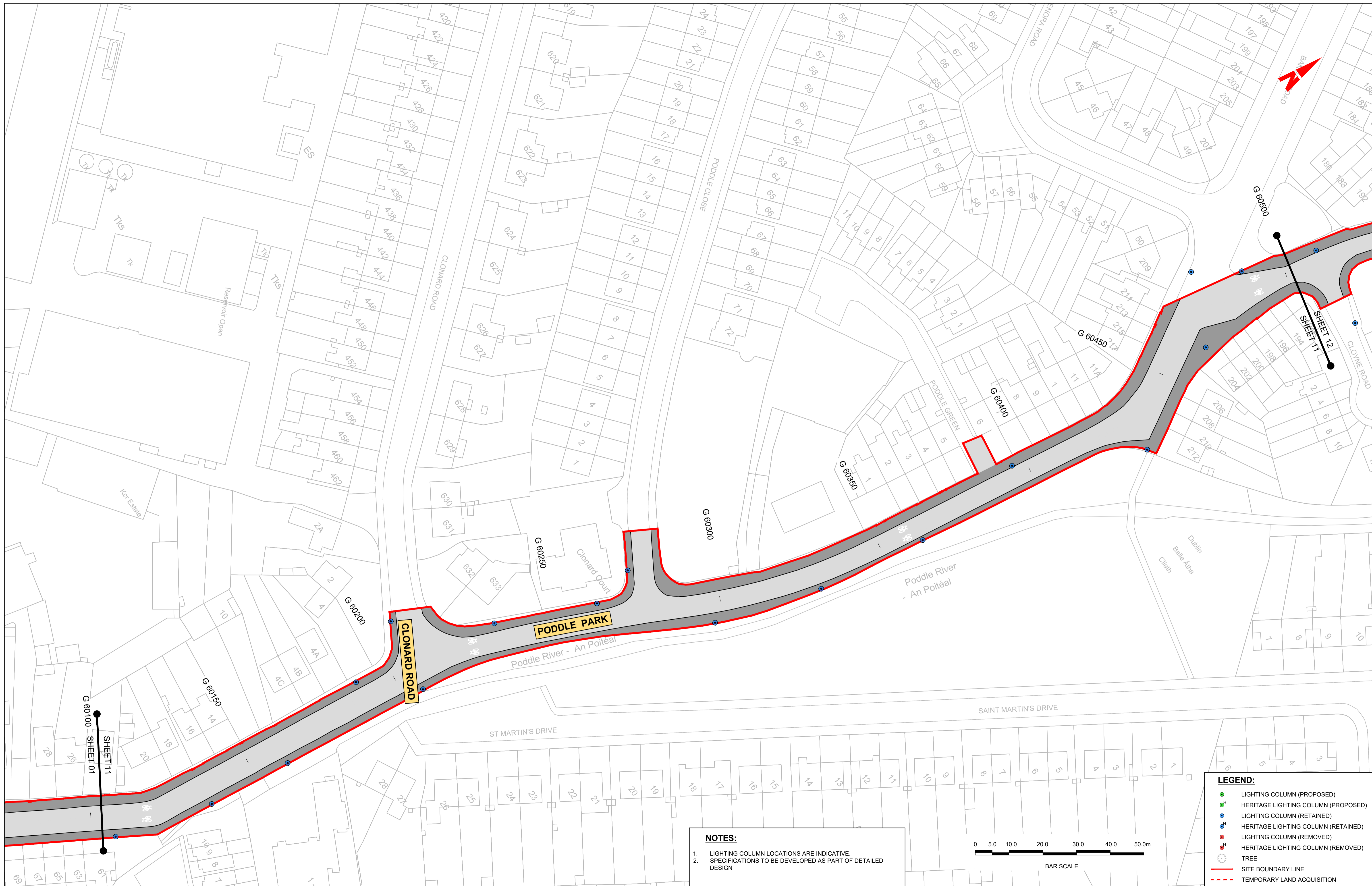
Date: FEB 2023
Scale: 1:500 @ A1
1:1000 @ A3

Drawn: JBB
Checked: EFD
Approved: SMG

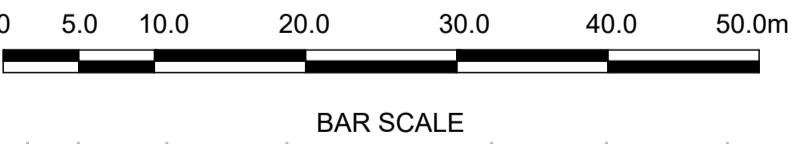
Programme Code: BCIDD
Originator Code: ROT
QMS Code:

Programme Title: BUSCONNECTS DUBLIN			
CORE BUS CORRIDORS INFRASTRUCTURE WORKS			
Drawing Title: KIMMAGE TO CITY CENTRE SCHEME PUBLIC LIGHTING LAYOUT			
Drawing File Name: BCIDD-ROT-LHT_RL-0011_XX_00-DR-EO-0010	Sheet Number: 10 of 14	Status: A	Rev: M01

DO NOT SCALE USE FIGURED DIMENSIONS ONLY



NOTES:
 1. LIGHTING COLUMN LOCATIONS ARE INDICATIVE.
 2. SPECIFICATIONS TO BE DEVELOPED AS PART OF DETAILED DESIGN



LEGEND:

- LIGHTING COLUMN (PROPOSED)
- HERITAGE LIGHTING COLUMN (PROPOSED)
- LIGHTING COLUMN (RETAINED)
- HERITAGE LIGHTING COLUMN (RETAINED)
- LIGHTING COLUMN (REMOVED)
- HERITAGE LIGHTING COLUMN (REMOVED)
- TREE
- SITE BOUNDARY LINE
- TEMPORARY LAND ACQUISITION

Disclaimer
 a. © National Transport Authority (NTA) 2022. This drawing is confidential and the copyright in it is owned by NTA. This drawing must not be either loaned, copied or otherwise reproduced in whole or in part or used for any purpose without the prior permission of NTA.
 b. This drawing is to be used for the design element identified in the titleblock. Other information shown is to be considered indicative only. The drawing is to be read in conjunction with all other relevant design drawings.
 c. O.S. data used for plans are printed under © Ordnance Survey Ireland Government of Ireland. All rights reserved. Licence Number 2022/OSI_NMA_180 National Transport Authority. All elevations are in metres and relate to OSI Geoid Model (OSGM15) Mean Head. All Co-ordinates are in Irish

Transverse Mercator Grid (ITM) as defined by OSI active local GPS station.
 d. Information concerning the position of apparatus shown on this drawing is based on drawings supplied by the utility owners and/or the utility works contractor, whilst every care has been taken in the preparation of this drawing, positions should be taken as approximate and are intended for general guidance only and no representation is made by the NTA as to the accuracy, completeness, sufficiency or otherwise of this drawing and the position of the apparatus. The information contained herein does not purport to be comprehensive or final as the apparatus is subject to being altered and/or superseded. Recipients should not rely on this information. Any liabilities are hereby expressly disclaimed.

e. The information contained herein has been provided by the NTA but does not purport to be comprehensive or final. Recipients should not rely on the information. Neither the NTA nor any of its directors, officers, employees, agents, stakeholders or advisers make any representation or warranty as to, or accept any liability or responsibility in relation to, the adequacy, accuracy, reasonableness or completeness of the information provided as part of this document or any matter on which the information is based (including but not limited to loss or damage arising as a result of reliance by recipients on the information or any part of it). Any liabilities are hereby expressly disclaimed.



Rev	Date	Drm	Chk'd	App'd	Description
M01	FEB 2023	JBB	EFD	SMG	ISSUE FOR PHASE 4: PLANNING

Client
NTA
 Údarás Náisiúnta Iompair
 National Transport Authority

Engineering Designer
CIROD
 TYPSA

Date	Scale	Drawn	Checked	Approved
FEB 2023	1:500 @ A1 1:1000 @ A3	JBB	EFD	SMG

Programme Title
BUSCONNECTS DUBLIN
CORE BUS CORRIDORS INFRASTRUCTURE WORKS

Drawing Title
 KIMMAGE TO CITY CENTRE SCHEME
 PUBLIC LIGHTING LAYOUT

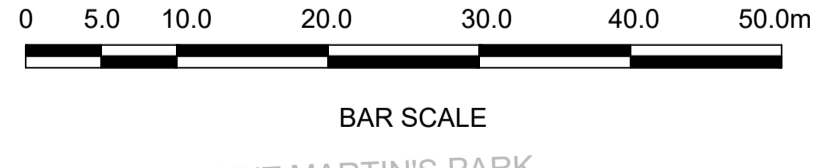
Drawing File Name	Sheet Number	Status	Rev
BCIDD-ROT-LHT_RL-0011_XX_00-DR-EO-0011	11 of 14	A	M01

DO NOT SCALE USE FIGURED DIMENSIONS ONLY



LEGEND:

- LIGHTING COLUMN (PROPOSED)
- HERITAGE LIGHTING COLUMN (PROPOSED)
- LIGHTING COLUMN (RETAINED)
- HERITAGE LIGHTING COLUMN (RETAINED)
- LIGHTING COLUMN (REMOVED)
- HERITAGE LIGHTING COLUMN (REMOVED)
- TREE
- SITE BOUNDARY LINE
- TEMPORARY LAND ACQUISITION



NOTES:

- LIGHTING COLUMN LOCATIONS ARE INDICATIVE.
- SPECIFICATIONS TO BE DEVELOPED AS PART OF DETAILED DESIGN

Disclaimer
 a. © National Transport Authority (NTA) 2022. This drawing is confidential and the copyright in it is owned by NTA. This drawing must not be either loaned, copied or otherwise reproduced in whole or in part or used for any purpose without the prior permission of NTA.
 b. This drawing is to be used for the design element identified in the titlebox. Other information shown is to be considered indicative only. The drawing is to be read in conjunction with all other relevant design drawings.
 c. O.S. data used for plans are printed under © Ordnance Survey Ireland Government of Ireland. All rights reserved. Licence Number 2022/OSI_NMA_180 National Transport Authority. All elevations are in metres and relate to OSI Geoid Model (OSGM15) Mean Head. All Co-ordinates are in Irish Transverse Mercator Grid (ITM) as defined by OSI active local GPS station.
 d. Information concerning the position of apparatus shown on this drawing is based on drawings supplied by the utility owners and/or the utility works contractor, whilst every care has been taken in the preparation of this drawing, positions should be taken as approximate and are intended for general guidance only and no representation is made by the NTA as to the accuracy, completeness, sufficiency or otherwise of this drawing and the position of the apparatus. The information contained herein does not purport to be comprehensive or final as the apparatus is subject to being altered and/or superceded. Recipients should not rely on this information. Any liabilities are hereby expressly disclaimed.

The information contained herein has been provided by the NTA but does not purport to be comprehensive or final. Recipients should not rely on the information. Neither the NTA nor any of its directors, officers, employees, agents, stakeholders or advisers make any representation or warranty as to, or accept any liability or responsibility in relation to, the adequacy, accuracy, reasonableness or completeness of the information provided as part of this document or any matter on which the information is based (including but not limited to loss or damage arising as a result of reliance by recipients on the information or any part of it). Any liabilities are hereby expressly disclaimed.

Rev	Date	Drn	Chk'd	App'd	Description
M01	FEB 2023	JBB	EFD	SMG	ISSUE FOR PHASE 4: PLANNING

Client

 Údarás Náisiúnta Iompair
 National Transport Authority

Engineering Designer

 IROD
 TYPSA

Programme Title
BUSCONNECTS DUBLIN
CORE BUS CORRIDORS INFRASTRUCTURE WORKS

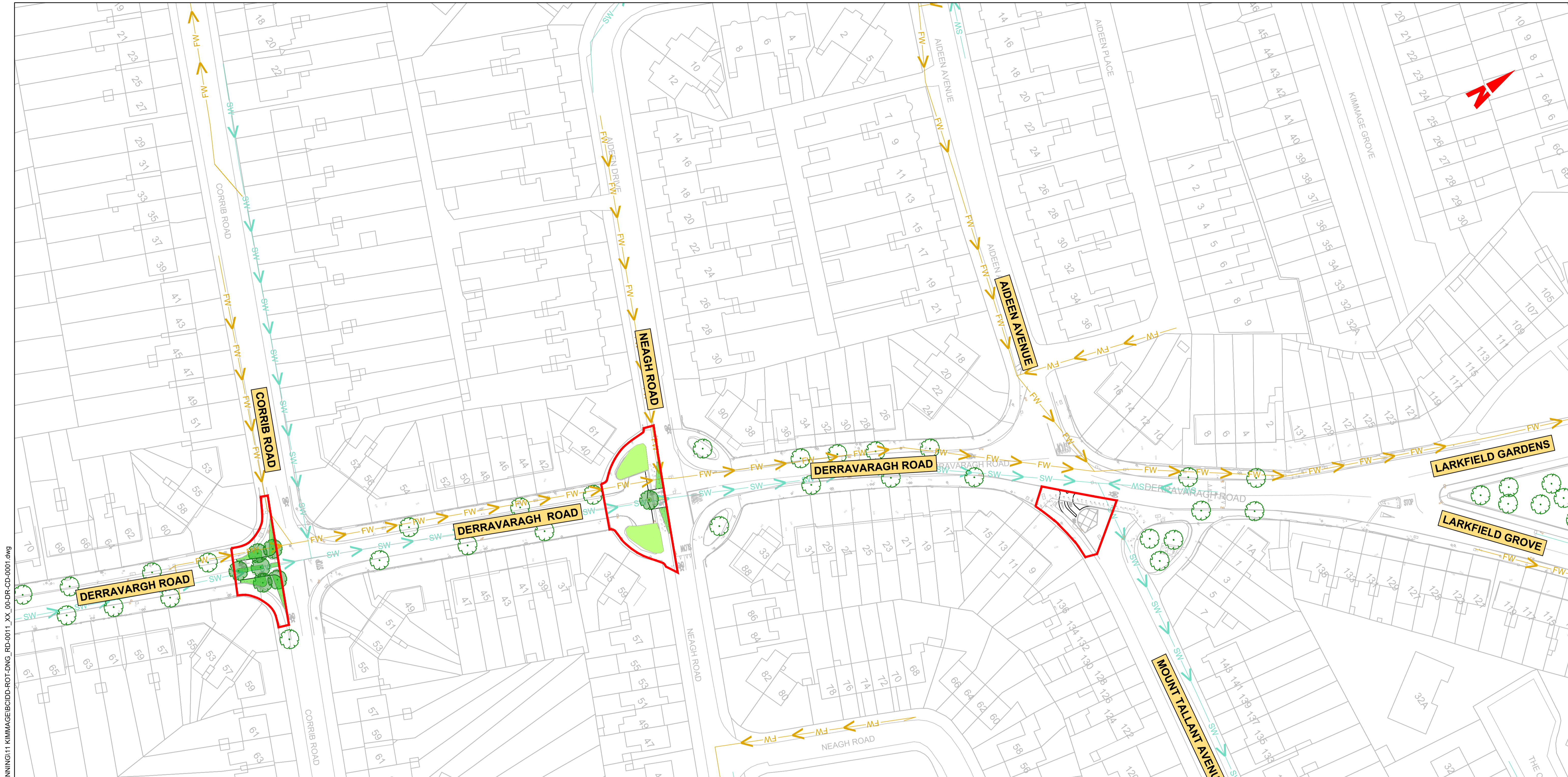
Drawing Title
 KIMMAGE TO CITY CENTRE SCHEME
 PUBLIC LIGHTING LAYOUT

Date: FEB 2023
 Scale: 1:500 @ A1, 1:1000 @ A3
 Drawn: JBB
 Checked: EFD
 Approved: SMG

Programme Code: BCIDD
 Originator Code: ROT
 QMS Code:

Drawing File Name: BCIDD-ROT-LHT_RL-0011_XX_00-DR-EO-0012
 Sheet Number: 12 of 14
 Status: A
 Rev: M01

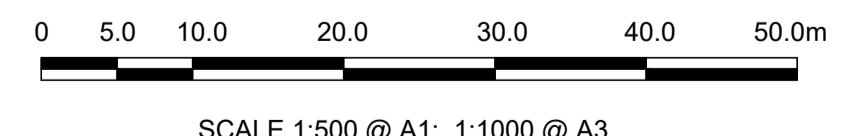
DO NOT SCALE USE FIGURED DIMENSIONS ONLY



LEGEND:

- ADDITIONAL CATCHMENT AREA (EXISTING GRASSED AREA TO BE PAVED)
- EXISTING PAVED AREAS TO BECOME GRASSED
- EXISTING GRASSED AREAS TO BE MAINTAINED
- EXISTING FOUL NETWORK
- EXISTING COMBINED DRAINAGE NETWORK
- EXISTING SURFACE WATER NETWORK
- EXISTING OVERFLOW PIPE
- SURFACE WATER PIPE - UNDER CONSTRUCTION
- PROPOSED STORM WATER PIPE
- PROPOSED OVERSIZED PIPE
- PROPOSED FILTER DRAIN/PERFORATED PIPE
- PROPOSED PERMEABLE PAVING
- PROPOSED RODDING EYE
- PROPOSED MANHOLE
- PROPOSED INSPECTION CHAMBER
- EXISTING TREE
- EXISTING TREE TO BE REMOVED
- PROPOSED NEW TREE
- PROPOSED NEW TREE PIT
- PROPOSED SUDS I.E. SWALES, RAINGARDENS, FILTER DRAIN
- EXISTING GULLY
- SITE BOUNDARY LINE
- TEMPORARY LAND ACQUISITION

NOTE: PIPE SHAPE CODES DN = CIRCULAR, RG = RECTANGULAR, EG = EGG SHAPED, AH= ARCH.



NOTES:

1. THIS DRAWING IS ONLY TO BE USED FOR THE DESIGN ELEMENT(S) IDENTIFIED IN THE TITLE BOX. ALL OTHER INFORMATION SHOWN ON THE DRAWING IS TO BE CONSIDERED INDICATIVE ONLY.
2. THIS DRAWING IS TO BE READ IN CONJUNCTION WITH ALL OTHER DRAWINGS AND SPECIFICATIONS.
3. STORMWATER DRAINAGE TO BE CONSTRUCTED IN ACCORDANCE WITH THE GREATER DUBLIN REGIONAL CODE OF PRACTICE FOR DRAINAGE WORKS AND/OR THE DRAINAGE DESIGN BASIS REPORT FOR CBC BUSCONNECTS.
4. ALL LEVELS ARE IN METRES ABOVE ORDNANCE DATUM (MALIN HEAD DATUM). SURVEY GRID AND ALL COORDINATES ARE IN IRISH TRANSVERSE MERCATOR.
5. EXISTING DRAINAGE NETWORK BASED ON RECORDS FROM IRISH WATER. PHYSICAL DRAINAGE INVESTIGATIONS MIGHT BE REQUIRED AT DETAILED DESIGN STAGE TO CONFIRM DETAILS OF EXISTING DRAINAGE ALONG THE ROUTE, THE SIZE, NUMBER, DEPTH, AND LOCATION ETC. OF EACH DRAINAGE INFRASTRUCTURE ELEMENT PRESENT ALONG THE ROUTE.
6. EXISTING MANHOLE COVERS TO BE ADJUSTED TO MATCH FINISHED SURFACE.
7. ALL THE EXISTING GULLIES THAT ARE NOT ADJACENT TO THE PROPOSED KERBLINE WILL BE DEMOLISHED, REPLACED BY SPLIT GULLIES AND RELOCATED AT THE PROPOSED ROAD KERBLINE.
8. ALL THE EXISTING GULLY CONNECTIONS TO BE MAINTAINED WHERE POSSIBLE.
9. NEW SPLIT GULLIES AND CONNECTIONS WILL BE REQUIRED. NO. OF AND SPACING TO BE DETERMINED DURING DETAILED DESIGN.
10. 2NO. OF GULLIES TO BE PROVIDED AT LOW POINTS AND AT LEAST ONE GULLY TO BE PROVIDED IMMEDIATELY UPSTREAM OF PEDESTRIAN CROSSINGS.
11. ALL SUDS FEATURES WILL PROVIDE ATTENUATION AND SURFACE WATER QUALITY TREATMENT
12. 'NET IMPERMEABLE AREA TO BE ATTENUATED' HAS PERMEABILITY FACTORS APPLIED.

ABBREVIATIONS:

- ADR: ALLOWABLE DISCHARGE RATE
- Vol_{att}: VOLUME OF ATTENUATION

J:\2019\19117117-02_WIPO8 MODELS\01 CAD\01 DWG\03 STG 3 - STATUTORY PROCESS (M)\01 PLANNING\11 KIMMAGE\BIDD-ROT-DNG_RD-0011_XX_00-DR-CD-0001.dwg

Disclaimer

a. © National Transport Authority (NTA) 2022. This drawing is confidential and the copyright in it is owned by NTA. This drawing must not be either loaned, copied or otherwise reproduced in whole or in part or used for any purpose without the prior permission of NTA.

b. This drawing is to be used for the design element identified in the title box. Other information shown is to be considered indicative only. The drawing is to be read in conjunction with all other relevant design drawings.

c. O.S. data used for plans are printed under © Ordnance Survey Ireland Government of Ireland. All rights reserved. Licence Number 2022/OSI_NMA_180 National Transport Authority. All elevations are in metres and relate to OSI Geoid Model (OSGM15) Malin Head. All Co-ordinates are in Irish Transverse Mercator Grid (ITM) as defined by OSI active local GPS station.

d. Information concerning the position of apparatus shown on this drawing is based on drawings supplied by the utility owners and/or the utility works contractor, whilst every care has been taken in the preparation of this drawing, positions should be taken as approximate and are intended for general guidance only and no representation is made by the NTA as to the accuracy, completeness, sufficiency or otherwise of this drawing and the position of the apparatus. The information contained herein does not purport to be comprehensive or final as the apparatus is subject to being altered and/or superceded. Recipients should not rely on this information. Any liabilities are hereby expressly disclaimed.

e. The information contained herein has been provided by the NTA but does not purport to be comprehensive or final. Recipients should not rely on the information. Neither the NTA nor any of its directors, officers, employees, agents, stakeholders or advisers make any representation or warranty as to, or accept any liability or responsibility in relation to, the adequacy, accuracy, reasonableness or completeness of the information provided as part of this document or any matter on which the information is based (including but not limited to loss or damage arising as a result of reliance by recipients on the information or any part of it). Any liabilities are hereby expressly disclaimed.

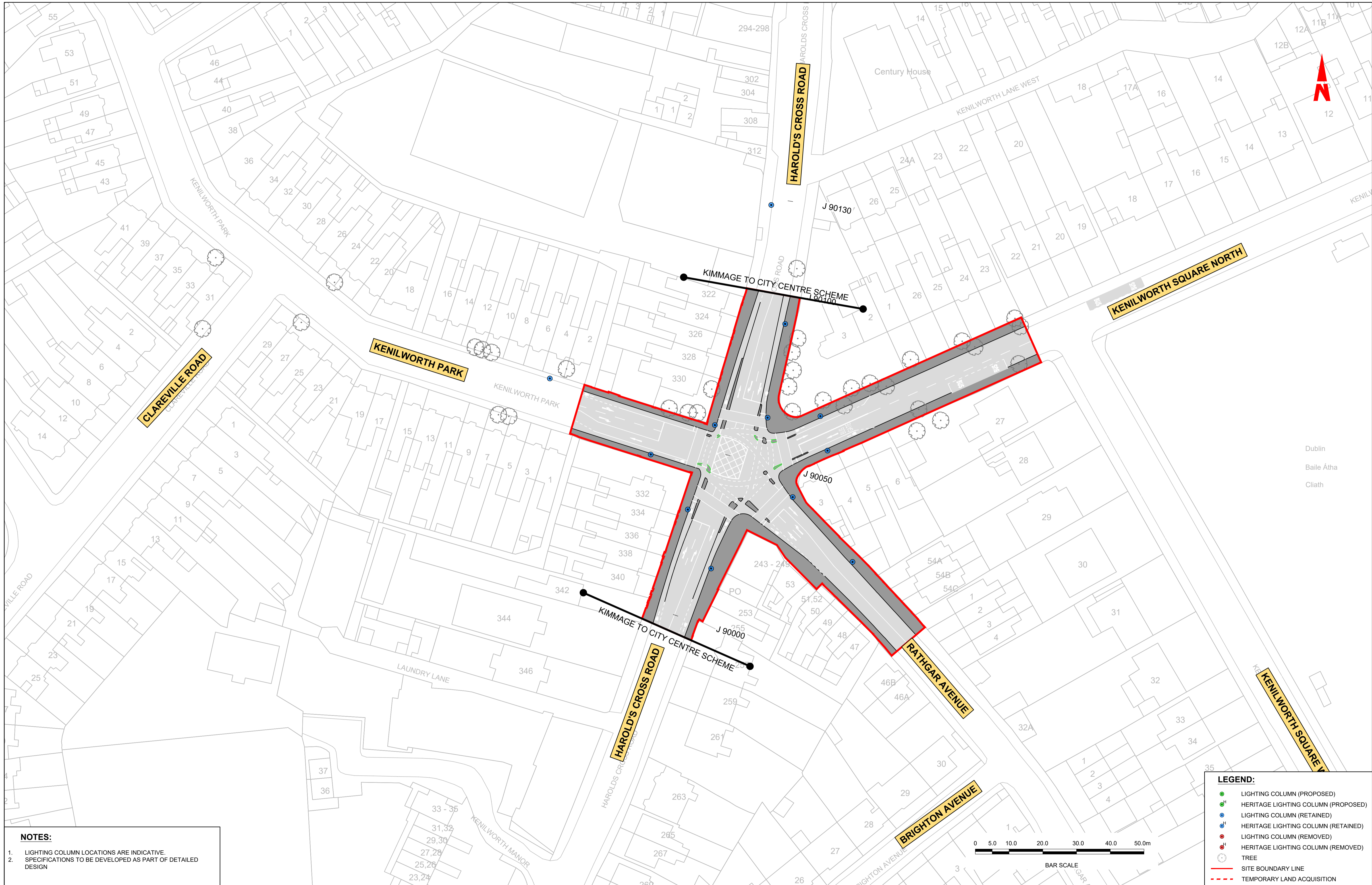
Project Ireland 2040
Building Ireland's Future

Rev	Date	Drm	Chk'd	App'd	Description
M01	FEB 2023	DS	LS	EOC	ISSUED FOR PHASE 4: PLANNING

<p>NTA Udarás Náisiúnta Iompair National Transport Authority</p>	<p>IROD TYPSA</p>	<p>Client: NTA</p> <p>Engineering Designer: IROD</p>
Date: FEB 2023	Scale: 1:500 @ A1, 1:1000 @ A3	Drawn: DS
Programme Code: BCIDD	Originator Code: ROT	Checked: LS
		Approved: EOC

<p>BUSCONNECTS DUBLIN CORE BUS CORRIDORS INFRASTRUCTURE WORKS</p>			
<p>Drawing Title: KIMMAGE TO CITY CENTRE CORE BUS CORRIDOR SCHEME PROPOSED SURFACE WATER DRAINAGE WORKS</p>			
Drawing File Name:	Sheet Number:	Status:	Rev:
BCIDD-ROT-DNG_RD-0011_XX_00-DR-CD-0013	13 of 14	A	M01

DO NOT SCALE USE FIGURED DIMENSIONS ONLY



NOTES:

- LIGHTING COLUMN LOCATIONS ARE INDICATIVE.
- SPECIFICATIONS TO BE DEVELOPED AS PART OF DETAILED DESIGN

Disclaimer

a. © National Transport Authority (NTA) 2022. This drawing is confidential and the copyright in it is owned by NTA. This drawing must not be either loaned, copied or otherwise reproduced in whole or in part or used for any purpose without the prior permission of NTA.

b. This drawing is to be used for the design element identified in the titleblock. Other information shown is to be considered indicative only. The drawing is to be read in conjunction with all other relevant design drawings.

c. O.S. data used for plans are printed under © Ordnance Survey Ireland Government of Ireland. All rights reserved. Licence Number 2022/OSI_NMA_180 National Transport Authority. All elevations are in metres and relate to OSI Geoid Model (OSGM15) Mean Head. All Co-ordinates are in Irish Transverse Mercator Grid (ITM) as defined by OSI active local GPS station.

d. Information concerning the position of apparatus shown on this drawing is based on drawings supplied by the utility owners and/or the utility works contractor, whilst every care has been taken in the preparation of this drawing, positions should be taken as approximate and are intended for general guidance only and no representation is made by the NTA as to the accuracy, completeness, sufficiency or otherwise of this drawing and the position of the apparatus. The information contained herein does not purport to be comprehensive or final as the apparatus is subject to being altered and/or superseded. Recipients should not rely on this information. Any liabilities are hereby expressly disclaimed.

e. The information contained herein has been provided by the NTA but does not purport to be comprehensive or final. Recipients should not rely on the information. Neither the NTA nor any of its directors, officers, employees, agents, stakeholders or advisers make any representation or warranty as to, or accept any liability or responsibility in relation to, the adequacy, accuracy, reasonableness or completeness of the information provided as part of this document or any matter on which the information is based (including but not limited to loss or damage arising as a result of reliance by recipients on the information or any part of it). Any liabilities are hereby expressly disclaimed.



Rev	Date	Drm	Chk'd	App'd	Description
M01	FEB 2023	JBB	EFD	SMG	ISSUE FOR PHASE 4: PLANNING

Client: **NTA**
Udarás Náisiúnta Iompair
National Transport Authority

Engineering Designer: **CIROD**
TYPSA

Date: FEB 2023 | Scale: 1:500 @ A1, 1:1000 @ A3 | Drawn: JBB | Checked: EFD | Approved: SMG

Programme Code: BCIDD | Originator Code: ROT | QMS Code:

Programme Title: **BUSCONNECTS DUBLIN**
CORE BUS CORRIDORS INFRASTRUCTURE WORKS

Drawing Title: **KIMMAGE TO CITY CENTRE SCHEME**
PUBLIC LIGHTING LAYOUT

Drawing File Name: BCIDD-ROT-LHT_RL-0011_XX_00-DR-EO-0014 | Sheet Number: 14 of 14 | Status: A | Rev: M01

DO NOT SCALE USE FIGURED DIMENSIONS ONLY