



Appendix B17
Combined Existing
Utilities Records



BUSCONNECTS DUBLIN CORE BUS CORRIDORS INFRASTRUCTURE WORKS

KIMMAGE TO CITY CENTRE CORE BUS CORRIDOR SCHEME

COMBINED EXISTING UTILITIES RECORDS	
DRAWING SERIES NUMBER(S)	DRAWING SERIES DESCRIPTION
BCIDD-ROT-UTL_IX-0011_XX_00-DR-CU-0001	RINGSEND TO CITY CENTRE CORE BUS CORRIDOR SCHEME. COMBINED EXISTING UTILITIES RECORDS. COVER SHEET
BCIDD-ROT-UTL_KP-0011_XX_00-DR-CU-0001	RINGSEND TO CITY CENTRE CORE BUS CORRIDOR SCHEME. COMBINED EXISTING UTILITIES RECORDS. KEY PLAN
BCIDD-ROT-UTL_UC-0011_XX_00-DR-CU-0001 to 0014	RINGSEND TO CITY CENTRE CORE BUS CORRIDOR SCHEME. COMBINED EXISTING UTILITIES RECORDS. DRAWINGS.

\\wddubp1u20191917117117-02_WIP08 MODELS01 CAD01 DWG03 STG 3 - STATUTORY PROCESS (M)01 PLANNING11 KIMMAGECOVER SHEETSBCIDD-ROT-UTL_IX-0011_XX_00-DR-CU-0001.dwg

Disclaimer
 a. © National Transport Authority (NTA) 2022. This drawing is confidential and the copyright in it is owned by NTA. This drawing must not be either loaned, copied or otherwise reproduced in whole or in part or used for any purpose without the prior permission of NTA.
 b. This drawing is to be used for the design element identified in the titleblock. Other information shown is to be considered indicative only. The drawing is to be read in conjunction with all other relevant design drawings.
 c. O.S. data used for plans are printed under © Ordnance Survey Ireland Government of Ireland. All rights reserved. Licence Number 2022/OSI_NMA_180 National Transport Authority. All elevations are in metres and relate to OSI Geoid Model (OSGM15) Mean Head. All Co-ordinates are in Irish Transverse Mercator Grid (ITM) as defined by OSI active local GPS station.
 d. Information concerning the position of apparatus shown on this drawing is based on drawings supplied by the utility owners and/or the utility works contractor, whilst every care has been taken in the preparation of this drawing, positions should be taken as approximate and are intended for general guidance only and no representation is made by the NTA as to the accuracy, completeness, sufficiency or otherwise of this drawing and the position of the apparatus. The information contained herein does not purport to be comprehensive or final as the apparatus is subject to being altered and/or superceded. Recipients should not rely on this information. Any liabilities are hereby expressly disclaimed.
 e. The information contained herein has been provided by the NTA but does not purport to be comprehensive or final. Recipients should not rely on the information. Neither the NTA nor any of its directors, officers, employees, agents, stakeholders or advisers make any representation or warranty as to, or accept any liability or responsibility in relation to, the adequacy, accuracy, reasonableness or completeness of the information provided as part of this document or any matter on which the information is based (including but not limited to loss or damage arising as a result of reliance by recipients on the information or any part of it). Any liabilities are hereby expressly disclaimed.

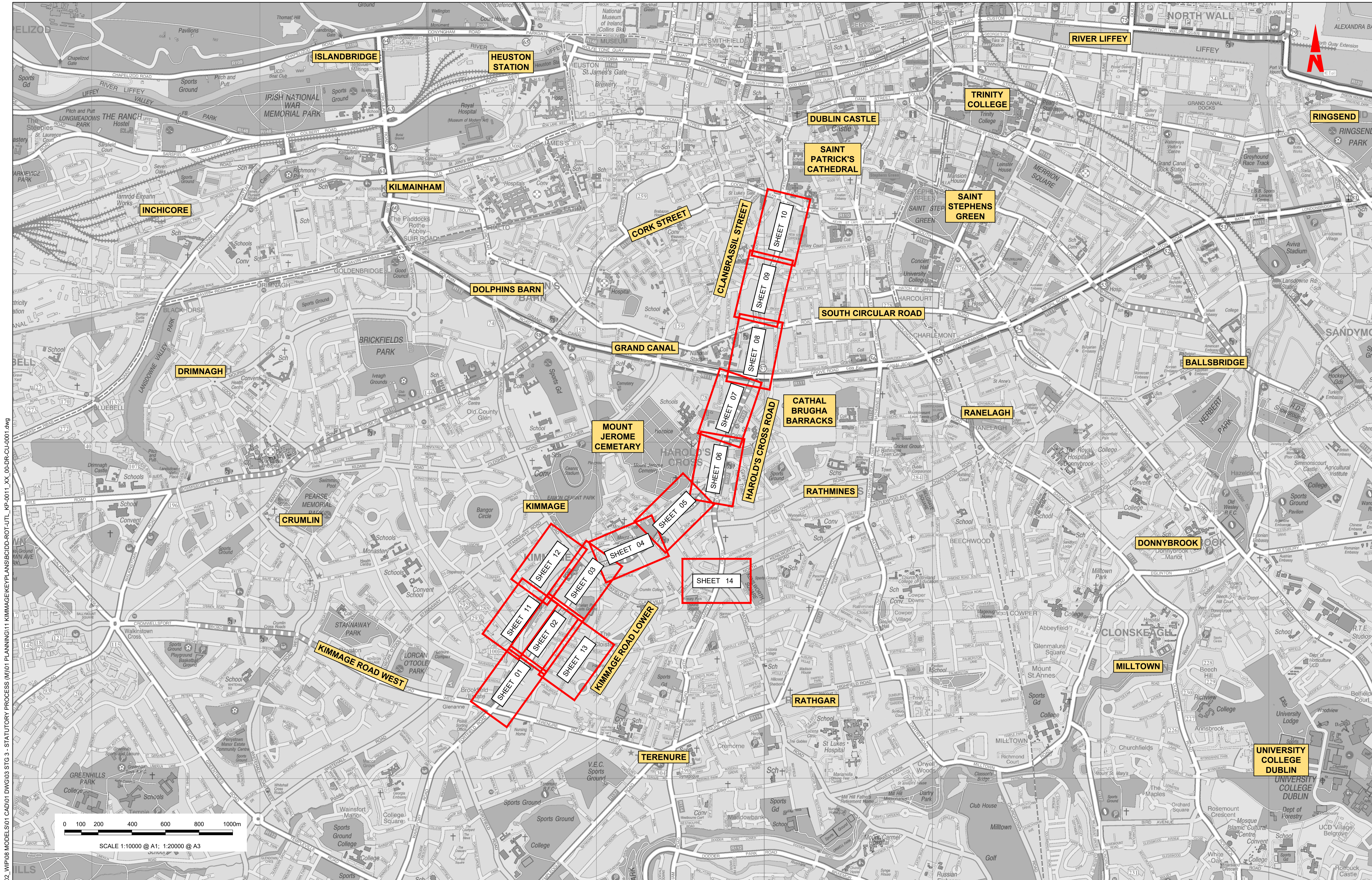


Rev	Date	Dwn	Chk'd	App'd	Description
M01	FEB 2023	CG	SMG	SMG	ISSUE FOR PHASE 4: PLANNING

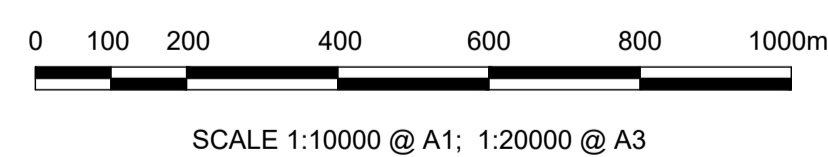
Client NTA Údarás Náisiúnta Iompair National Transport Authority		Engineering Designer ROD TYP SA RUGHAN & O'DONOVAN		
Date FEB 2023	Scale NTS @ A1 NTS @ A3	Drawn CG	Checked SMG	Approved SMG
Programme Code BCIDD	Originator Code ROT	QMS Code		

Programme Title BUSCONNECTS DUBLIN CORE BUS CORRIDORS INFRASTRUCTURE WORKS			
Drawing Title KIMMAGE TO CITY CENTRE CORE BUS CORRIDOR SCHEME COMBINED EXISTING UTILITIES RECORDS COVER SHEET			
Drawing File Name BCIDD-ROT-UTL_IX-0011_XX_00-DR-CU-0001	Sheet Number 01 of 0	Status A	Rev M01

DO NOT SCALE USE FIGURED DIMENSIONS ONLY

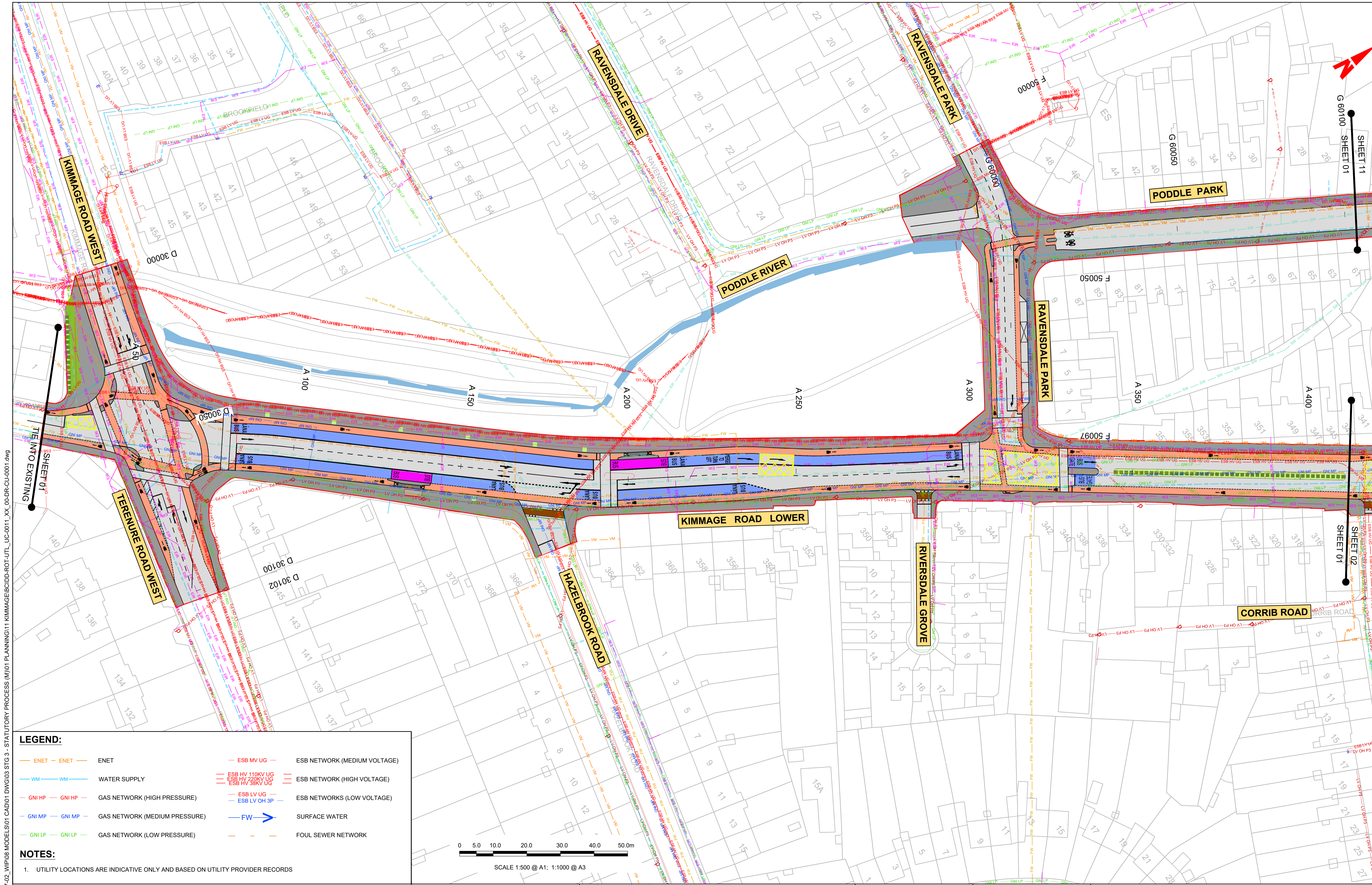


W:\000000\19119117-02_WIP08_MODELS\01_CAD\01_PLANNING\11_KIMMAGE\KEYPLANS\BCIDD-ROT-UTL_KP-0011_XX_00-DR-CU-0001.dwg
 STATUTORY PROCESS (M)01 PLANNING 11 KIMMAGE\KEYPLANS\BCIDD-ROT-UTL_KP-0011_XX_00-DR-CU-0001.dwg



<p>Disclaimer</p> <p>a. © National Transport Authority (NTA) 2022. This drawing is confidential and the copyright in it is owned by NTA. This drawing must not be either loaned, copied or otherwise reproduced in whole or in part or used for any purpose without the prior permission of NTA.</p> <p>b. This drawing is to be used for the design element identified in the titleblock. Other information shown is to be considered indicative only. The drawing is to be read in conjunction with all other relevant design drawings.</p> <p>c. OS data used for plans are printed under © Ordnance Survey Ireland Government of Ireland. All rights reserved. Licence Number 2022/OSI_NMA_180 National Transport Authority. All elevations are in metres and relate to OSi Geoid Model (OSGM15) Mean Head. All Co-ordinates are in Irish Transverse Mercator Grid (ITM) as defined by OSi active local GPS station.</p> <p>d. Information concerning the position of apparatus shown on this drawing is based on drawings supplied by the utility owners and/or the utility works contractor, whilst every care has been taken in the preparation of this drawing, positions should be as to, or accept any liability or responsibility in relation to, the adequacy, accuracy, reasonableness or completeness of the information provided as part of this document or any matter on which the information is based (including but not limited to loss or damage arising as a result of reliance by recipients on the information or any part of it). Any liabilities are hereby expressly disclaimed.</p>		<p>Rev M01 Date FEB 2023 Drm CG Chk'd SMG App'd SMG</p>		<p>Description ISSUE FOR PHASE 4 : PLANNING</p>		<p>Client NTA Udárás Náisiúnta Iompair National Transport Authority</p>		<p>Engineering Designer CIROD TYPSA</p>			<p>Programme Title BUSCONNECTS DUBLIN CORE BUS CORRIDORS INFRASTRUCTURE WORKS</p>			
<p>Date FEB 2023 Scale 1:10,000 @ A1 1:20,000 @ A3</p>		<p>Drawn CG Checked SMG Approved SMG</p>		<p>Programme Code BCIDD</p>		<p>Originator Code ROT</p>		<p>QMS Code</p>		<p>Drawing File Name BCIDD-ROT-UTL_KP-0011_XX_00-DR-CU-0001</p>				
<p>Scale 1:10000 @ A1; 1:20000 @ A3</p>		<p>QMS Code</p>		<p>KEY PLAN</p>		<p>Sheet Number 01 of 01</p>		<p>Status A</p>		<p>Rev M01</p>				

DO NOT SCALE USE FIGURED DIMENSIONS ONLY

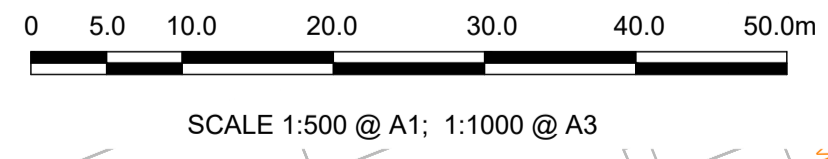


LEGEND:

ENET	ENET	ESB MV UG	ESB NETWORK (MEDIUM VOLTAGE)
WM	WATER SUPPLY	ESB HV 110KV UG	ESB NETWORK (HIGH VOLTAGE)
GNI HP	GAS NETWORK (HIGH PRESSURE)	ESB HV 220KV UG	
GNI MP	GAS NETWORK (MEDIUM PRESSURE)	ESB HV 38KV UG	
GNI LP	GAS NETWORK (LOW PRESSURE)	ESB LV UG	ESB NETWORKS (LOW VOLTAGE)
		ESB LV OH 3P	
		FW	SURFACE WATER
			FOUL SEWER NETWORK

NOTES:

- UTILITY LOCATIONS ARE INDICATIVE ONLY AND BASED ON UTILITY PROVIDER RECORDS



\\produbp1\U201919\17117-02_WIP\08 MODELS\01 CAD\01 PLANNING\11 KIMMAGE\BCDD-ROT-UTL_UC-0011_XX_00-DR-CU-0001.dwg

Disclaimer:
 a. © National Transport Authority (NTA) 2022. This drawing is confidential and the copyright in it is owned by NTA. This drawing must not be either loaned, copied or otherwise reproduced in whole or in part or used for any purpose without the prior permission of NTA.
 b. This drawing is to be used for the design element identified in the titleblock. Other information shown is to be considered indicative only. The drawing is to be read in conjunction with all other relevant design drawings.
 c. O.S. data used for plans are printed under © Ordnance Survey Ireland Government of Ireland. All rights reserved. Licence Number 2022/OSI_NMA_180 National Transport Authority. All elevations are in metres and relate to OSI Geoid Model (OSGM15) Mean Head. All Co-ordinates are in Irish Transverse Mercator Grid (ITM) as defined by OSI active local GPS station.
 d. Information concerning the position of apparatus shown on this drawing is based on drawings supplied by the utility owners and/or the utility works contractor, whilst every care has been taken in the preparation of this drawing, positions should be taken as approximate and are intended for general guidance only and no representation is made by the NTA as to the accuracy, completeness, sufficiency or otherwise of this drawing and the position of the apparatus. The information contained herein does not purport to be comprehensive or final as the apparatus is subject to being altered and/or superceded. Recipients should not rely on this information. Any liabilities are hereby expressly disclaimed.

The information contained herein has been provided by the NTA but does not purport to be comprehensive or final. Recipients should not rely on the information. Neither the NTA nor any of its directors, officers, employees, agents, stakeholders or advisers make any representation or warranty as to, or accept any liability or responsibility in relation to, the adequacy, accuracy, reasonableness or completeness of the information provided as part of this document or any matter on which the information is based (including but not limited to loss or damage arising as a result of reliance by recipients on the information or any part of it). Any liabilities are hereby expressly disclaimed.

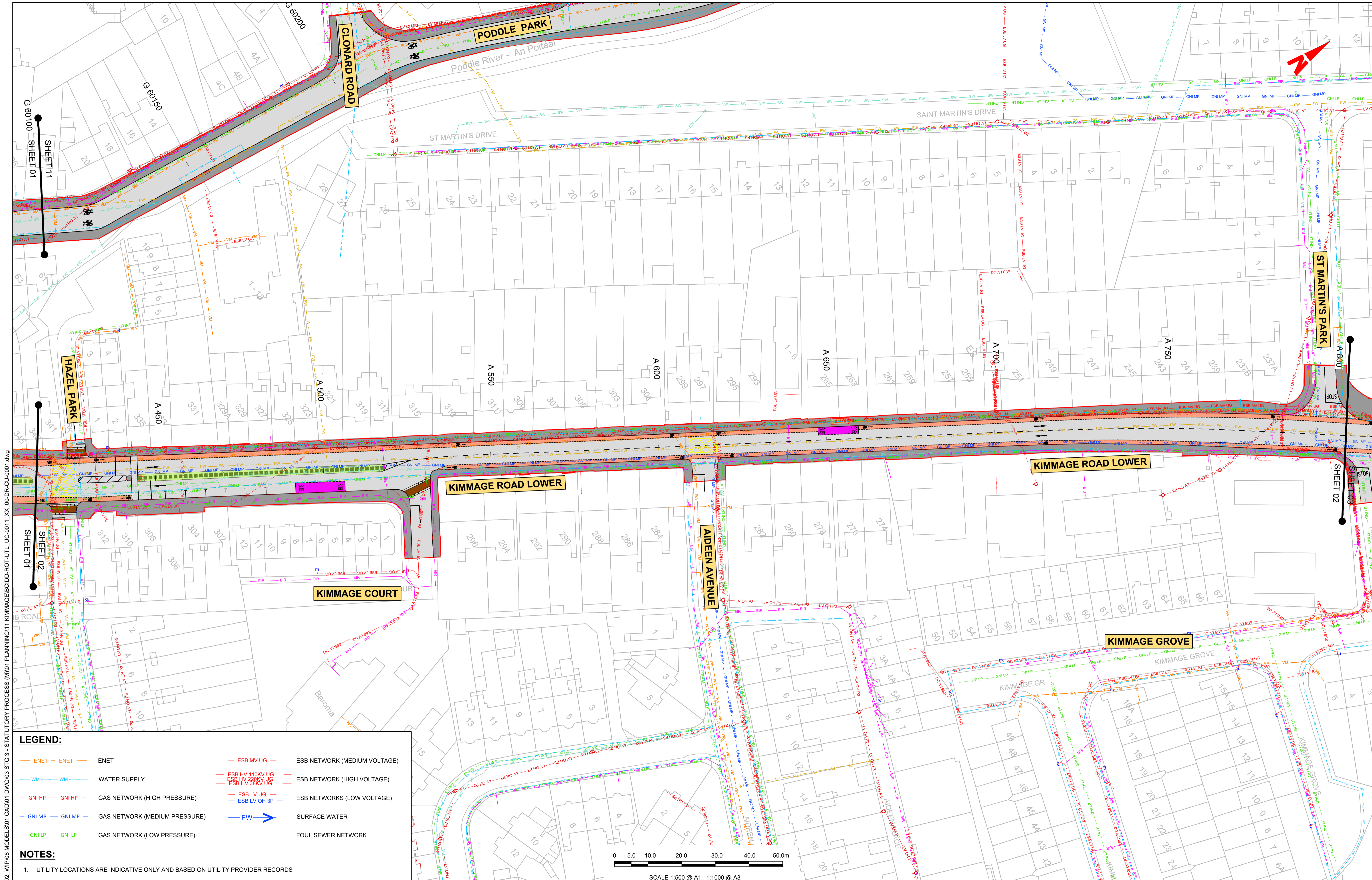
Project Ireland 2040
 Building Ireland's Future

Rev	Date	Drn	Chk'd	App'd	Description
M01	FEB 2023	GZ	EE	SMG	ISSUED FOR PHASE 4: PLANNING

Client NTA Údarás Náisiúnta Iompair National Transport Authority		Engineering Designer CIROD TYPSA	
Date FEB 2023	Scale 1:500 @ A1 1:1000 @ A3	Drawn DS	Checked EE
Programme Code BCIDD	Originator Code ROT	QMS Code	Approved SMG

Programme Title BUSCONNECTS DUBLIN CORE BUS CORRIDORS INFRASTRUCTURE WORKS			
Drawing Title KIMMAGE TO CITY CENTRE CORE BUS CORRIDOR SCHEME COMBINED EXISTING UTILITIES RECORDS			
Drawing File Name BCIDD-ROT-UTL_UC-0011_XX_00-DR-CU-0001	Sheet Number 01 of 14	Status A	Rev M01

DO NOT SCALE USE FIGURED DIMENSIONS ONLY

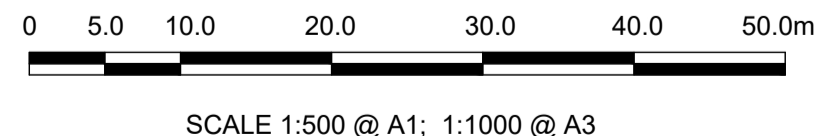


LEGEND:

	ENET	ENET		ESB MV UG	ESB NETWORK (MEDIUM VOLTAGE)
	WM	WATER SUPPLY		ESB HV 110KV UG	ESB NETWORK (HIGH VOLTAGE)
	GNI HP	GAS NETWORK (HIGH PRESSURE)		ESB HV 220KV UG	ESB NETWORK (HIGH VOLTAGE)
	GNI MP	GAS NETWORK (MEDIUM PRESSURE)		ESB HV 38KV UG	ESB NETWORK (HIGH VOLTAGE)
	GNI LP	GAS NETWORK (LOW PRESSURE)		ESB LV UG	ESB NETWORKS (LOW VOLTAGE)
				ESB LV OH 3P	ESB NETWORKS (LOW VOLTAGE)
				FW	SURFACE WATER
					FOUL SEWER NETWORK

NOTES:

- UTILITY LOCATIONS ARE INDICATIVE ONLY AND BASED ON UTILITY PROVIDER RECORDS



\\produbp1\j2019\1917117-02_WIP\08 MODELS\01 CAD\01 PLANNING\11 KIMMAGE\BCIDD-ROT-UTL_UC-0011_XX_00-DR-CU-0001.dwg

Disclaimer:

a. © National Transport Authority (NTA) 2022. This drawing is confidential and the copyright in it is owned by NTA. This drawing must not be either loaned, copied or otherwise reproduced in whole or in part or used for any purpose without the prior permission of NTA.

b. This drawing is to be used for the design element identified in the titleblock. Other information shown is to be considered indicative only. The drawing is to be read in conjunction with all other relevant design drawings.

c. O.S. data used for plans are printed under © Ordnance Survey Ireland Government of Ireland. All rights reserved. Licence Number 2022/OSI_NMA_180 National Transport Authority. All elevations are in metres and relate to OSI Geoid Model (OSGM15) Mean Head. All Co-ordinates are in Irish Transverse Mercator Grid (ITM) as defined by OSI active local GPS station.

d. Information concerning the position of apparatus shown on this drawing is based on drawings supplied by the utility owners and/or the utility works contractor, whilst every care has been taken in the preparation of this drawing, positions should be taken as approximate and are intended for general guidance only and no representation is made by the NTA as to the accuracy, completeness, sufficiency or otherwise of this drawing and the position of the apparatus. The information contained herein does not purport to be comprehensive or final as the apparatus is subject to being altered and/or superseded. Recipients should not rely on this information. Any liabilities are hereby expressly disclaimed.

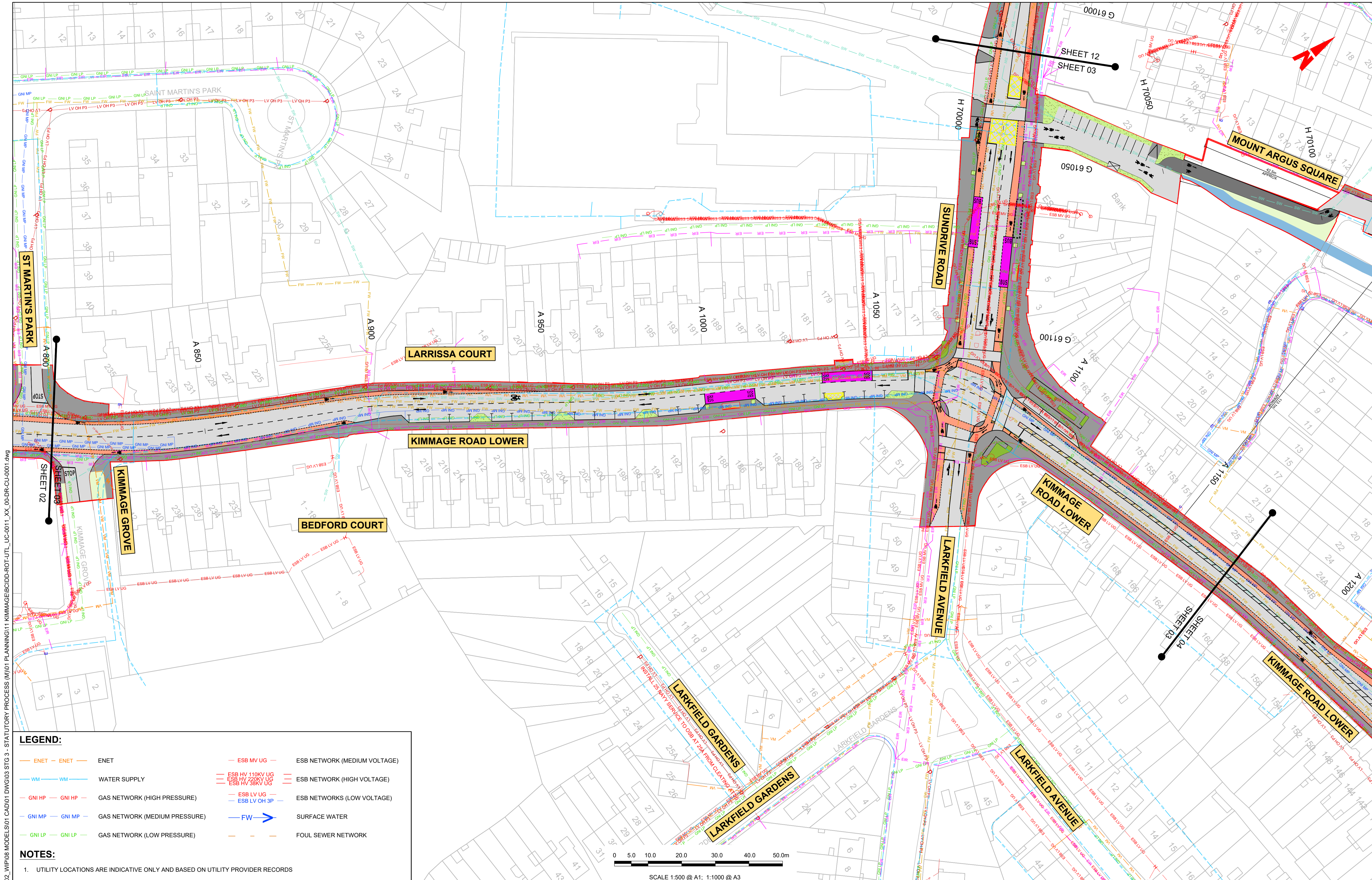
e. The information contained herein has been provided by the NTA but does not purport to be comprehensive or final. Recipients should not rely on the information. Neither the NTA nor any of its directors, officers, employees, agents, stakeholders or advisers make any representation or warranty as to, or accept any liability or responsibility in relation to, the accuracy, accuracy, reasonableness or completeness of the information provided as part of this document or any matter on which the information is based (including but not limited to loss or damage arising as a result of reliance by recipients on the information or any part of it). Any liabilities are hereby expressly disclaimed.

Rev	Date	Drm	Chk'd	App'd	Description
M01	FEB 2023	GZ	EE	SMG	ISSUED FOR PHASE 4: PLANNING

 Údarás Náisiúnta Iompair National Transport Authority		Engineering Designer I-ROD TYPSA		
Date	Scale	Drawn	Checked	Approved
FEB 2023	1:500 @ A1 1:1000 @ A3	DS	EE	SMG
Programme Code	Originator Code	QMS Code		
BCIDD	ROT			

Programme Title BUSCONNECTS DUBLIN CORE BUS CORRIDORS INFRASTRUCTURE WORKS			
Drawing Title KIMMAGE TO CITY CENTRE CORE BUS CORRIDOR SCHEME COMBINED EXISTING UTILITIES RECORDS			
Drawing File Name	Sheet Number	Status	Rev
BCIDD-ROT-UTL_UC-0011_XX_00-DR-CU-0002	02 of 14	A	M01

DO NOT SCALE USE FIGURED DIMENSIONS ONLY



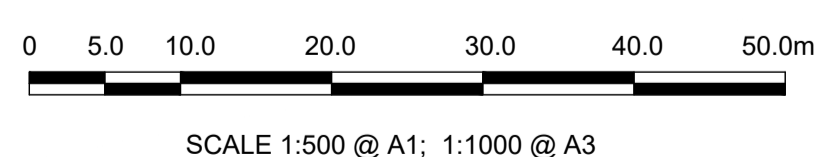
W:\000000\117-02_00-DR-CU-0001.dwg | STATUTORY PROCESS (M)01 PLANNING11 KIMMAGE\BCID-ROT-UTL_UC-0011_XX_00-DR-CU-0001.dwg

LEGEND:

ENET	ENET	ESB MV UG	ESB NETWORK (MEDIUM VOLTAGE)
WM	WATER SUPPLY	ESB HV 110KV UG	ESB NETWORK (HIGH VOLTAGE)
GNI HP	GAS NETWORK (HIGH PRESSURE)	ESB HV 220KV UG	
GNI MP	GAS NETWORK (MEDIUM PRESSURE)	ESB HV 38KV UG	
GNI LP	GAS NETWORK (LOW PRESSURE)	ESB LV UG	ESB NETWORKS (LOW VOLTAGE)
		ESB LV OH 3P	
		FW	SURFACE WATER
			FOUL SEWER NETWORK

NOTES:

- UTILITY LOCATIONS ARE INDICATIVE ONLY AND BASED ON UTILITY PROVIDER RECORDS



Disclaimer

a. © National Transport Authority (NTA) 2022. This drawing is confidential and the copyright in it is owned by NTA. This drawing must not be either loaned, copied or otherwise reproduced in whole or in part or used for any purpose without the prior permission of NTA.

b. This drawing is to be used for the design element identified in the titleblock. Other information shown is to be considered indicative only. The drawing is to be read in conjunction with all other relevant design drawings.

c. O.S. data used for plans are printed under © Ordnance Survey Ireland Government of Ireland. All rights reserved. Licence Number 2022/OSI_NMA_180 National Transport Authority. All elevations are in metres and relate to OSI Geoid Model (OSGM15) Mean Head. All Co-ordinates are in Irish Transverse Mercator Grid (ITM) as defined by OSI active local GPS station.

d. Information concerning the position of apparatus shown on this drawing is based on drawings supplied by the utility owners and/or the utility works contractor, whilst every care has been taken in the preparation of this drawing, positions should be taken as approximate and are intended for general guidance only and no representation is made by the NTA as to the accuracy, completeness, sufficiency or otherwise of this drawing and the position of the apparatus. The information contained herein does not purport to be comprehensive or final as the apparatus is subject to being altered and/or superseded. Recipients should not rely on this information. Any liabilities are hereby expressly disclaimed.

e. The information contained herein has been provided by the NTA but does not purport to be comprehensive or final. Recipients should not rely on the information. Neither the NTA nor any of its directors, officers, employees, agents, stakeholders or advisers make any representation or warranty as to, or accept any liability or responsibility in relation to, the adequacy, accuracy, reasonableness or completeness of the information provided as part of this document or any matter on which the information is based (including but not limited to loss or damage arising as a result of reliance by recipients on the information or any part of it). Any liabilities are hereby expressly disclaimed.



Rev	Date	Drm	Chk'd	App'd	Description
M01	FEB 2023	GZ	EE	SMG	ISSUED FOR PHASE 4: PLANNING

Client: **NTA**
Udárás Náisiúnta Iompair
National Transport Authority

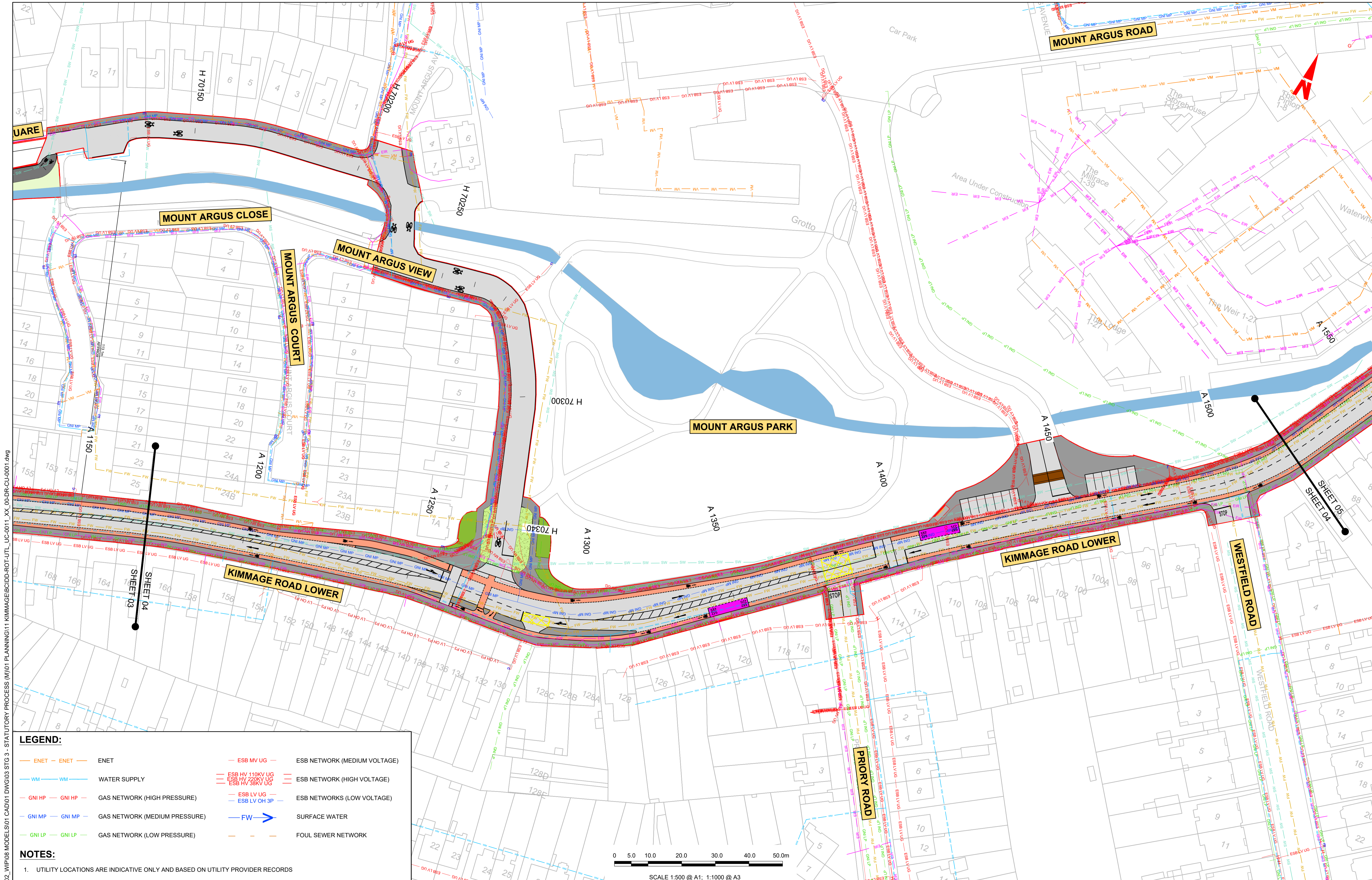
Engineering Designer: **PROD**
TYPSA

Date: FEB 2023 | Scale: 1:500 @ A1, 1:1000 @ A3 | Drawn: DS | Checked: EE | Approved: SMG

Programme Code: BCIDD | Originator Code: ROT | QMS Code:

Programme Title: BUSCONNECTS DUBLIN CORE BUS CORRIDORS INFRASTRUCTURE WORKS			
Drawing Title: KIMMAGE TO CITY CENTRE CORE BUS CORRIDOR SCHEME COMBINED EXISTING UTILITIES RECORDS			
Drawing File Name: BCIDD-ROT-UTL_UC-0011_XX_00-DR-CU-0003	Sheet Number: 03 of 14	Status: A	Rev: M01

DO NOT SCALE USE FIGURED DIMENSIONS ONLY

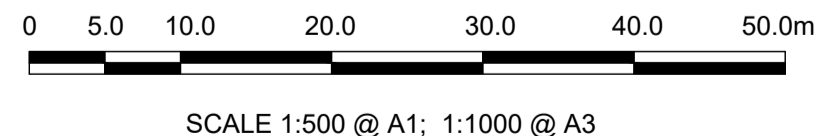


LEGEND:

ENET	ENET	ESB MV UG	ESB NETWORK (MEDIUM VOLTAGE)
WM	WATER SUPPLY	ESB HV 110KV UG	ESB NETWORK (HIGH VOLTAGE)
GNI HP	GAS NETWORK (HIGH PRESSURE)	ESB HV 220KV UG	
GNI MP	GAS NETWORK (MEDIUM PRESSURE)	ESB HV 38KV UG	
GNI LP	GAS NETWORK (LOW PRESSURE)	ESB LV UG	ESB NETWORKS (LOW VOLTAGE)
		FW	SURFACE WATER
			FOUL SEWER NETWORK

NOTES:

1. UTILITY LOCATIONS ARE INDICATIVE ONLY AND BASED ON UTILITY PROVIDER RECORDS



\\produbp1\j20191917117-02_WIP08 MODELS\01 CAD\01 PLANNING\11 KIMMAGE\BCID-ROT-UTL_UC-0011_XX_00-DR-CU-0001.dwg

Disclaimer:

a. © National Transport Authority (NTA) 2022. This drawing is confidential and the copyright in it is owned by NTA. This drawing must not be either loaned, copied or otherwise reproduced in whole or in part or used for any purpose without the prior permission of NTA.

b. This drawing is to be used for the design element identified in the titleblock. Other information shown is to be considered indicative only. The drawing is to be read in conjunction with all other relevant design drawings.

c. O.S. data used for plans are printed under © Ordnance Survey Ireland Government of Ireland. All rights reserved. Licence Number 2022/OSI_NMA_180 National Transport Authority. All elevations are in metres and relate to OSI Geoid Model (OSGM15) Mean Head. All Co-ordinates are in Irish Transverse Mercator Grid (ITM) as defined by OSI active local GPS station.

d. Information concerning the position of apparatus shown on this drawing is based on drawings supplied by the utility owners and/or the utility works contractor, whilst every care has been taken in the preparation of this drawing, positions should be taken as approximate and are intended for general guidance only and no representation is made by the NTA as to the accuracy, completeness, sufficiency or otherwise of this drawing and the position of the apparatus. The information contained herein does not purport to be comprehensive or final as the apparatus is subject to being altered and/or superceded. Recipients should not rely on this information. Any liabilities are hereby expressly disclaimed.

e. The information contained herein has been provided by the NTA but does not purport to be comprehensive or final. Recipients should not rely on the information. Neither the NTA nor any of its directors, officers, employees, agents, stakeholders or advisers make any representation or warranty as to, or accept any liability or responsibility in relation to, the adequacy, accuracy, reasonableness or completeness of the information provided as part of this document or any matter on which the information is based (including but not limited to loss or damage arising as a result of reliance by recipients on the information or any part of it). Any liabilities are hereby expressly disclaimed.

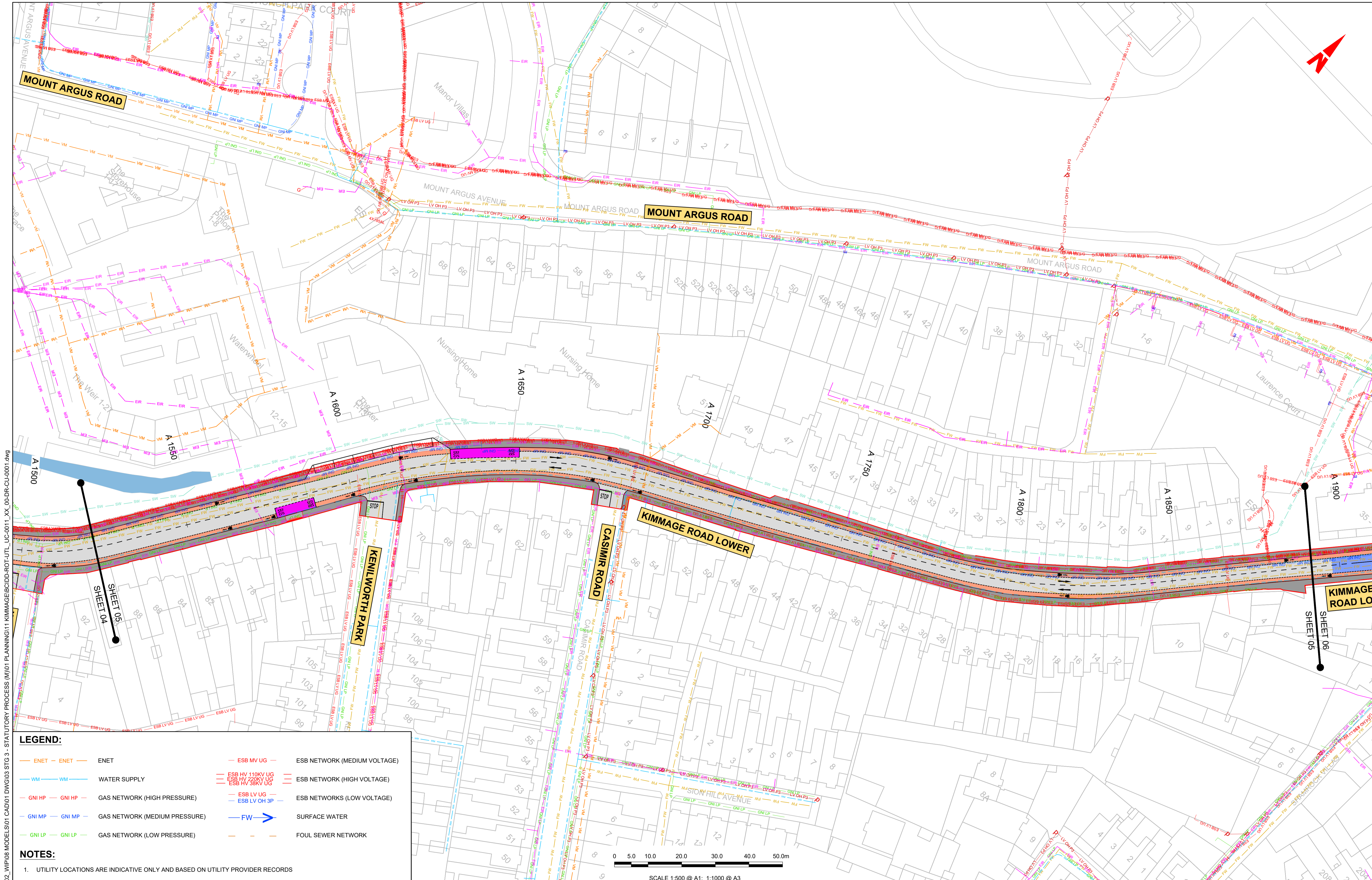


Rev	Date	Drn	Chk'd	App'd	Description
M01	FEB 2023	GZ	EE	SMG	ISSUED FOR PHASE 4: PLANNING

Client NTA Udárás Náisiúnta Iompair National Transport Authority		Engineering Designer PROD TYPSA	
Date FEB 2023	Scale 1:500 @ A1 1:1000 @ A3	Drawn DS	Checked EE
Programme Code BCIDD	Originator Code ROT	QMS Code	Approved SMG

Programme Title BUSCONNECTS DUBLIN CORE BUS CORRIDORS INFRASTRUCTURE WORKS			
Drawing Title KIMMAGE TO CITY CENTRE CORE BUS CORRIDOR SCHEME COMBINED EXISTING UTILITIES RECORDS			
Drawing File Name BCIDD-ROT-UTL_UC-0011_XX_00-DR-CU-0004	Sheet Number 04 of 14	Status A	Rev M01

DO NOT SCALE USE FIGURED DIMENSIONS ONLY

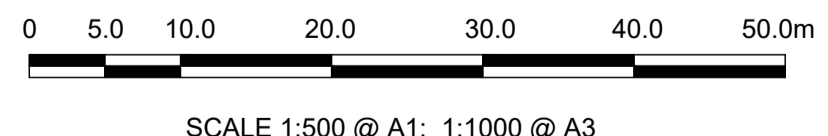


LEGEND:

ENET	ENET	ESB MV UG	ESB NETWORK (MEDIUM VOLTAGE)
WM	WATER SUPPLY	ESB HV 110KV UG	ESB NETWORK (HIGH VOLTAGE)
GNI HP	GAS NETWORK (HIGH PRESSURE)	ESB HV 220KV UG	
GNI MP	GAS NETWORK (MEDIUM PRESSURE)	ESB HV 38KV UG	
GNI LP	GAS NETWORK (LOW PRESSURE)	ESB LV UG	ESB NETWORKS (LOW VOLTAGE)
		ESB LV OH 3P	
		FW	SURFACE WATER
			FOUL SEWER NETWORK

NOTES:

- UTILITY LOCATIONS ARE INDICATIVE ONLY AND BASED ON UTILITY PROVIDER RECORDS



W:\projects\1917117-02_WIP\08 MODELS\01 CAD\01 PLANNING\11 KIMMAGE\BCIDD-ROT-UTL_UC-0011_XX_00-DR-CU-0001.dwg

Disclaimer:

a. © National Transport Authority (NTA) 2022. This drawing is confidential and the copyright in it is owned by NTA. This drawing must not be either loaned, copied or otherwise reproduced in whole or in part or used for any purpose without the prior permission of NTA.

b. This drawing is to be used for the design element identified in the titleblock. Other information shown is to be considered indicative only. The drawing is to be read in conjunction with all other relevant design drawings.

c. O.S. data used for plans are printed under © Ordnance Survey Ireland Government of Ireland. All rights reserved. Licence Number 2022/OSI_NMA_180 National Transport Authority. All elevations are in metres and relate to OSI Geoid Model (OSGM15) Mean Head. All Co-ordinates are in Irish Transverse Mercator Grid (ITM) as defined by OSI active local GPS station.

d. Information concerning the position of apparatus shown on this drawing is based on drawings supplied by the utility owners and/or the utility works contractor, whilst every care has been taken in the preparation of this drawing, positions should be taken as approximate and are intended for general guidance only and no representation is made by the NTA as to the accuracy, completeness, sufficiency or otherwise of this drawing and the position of the apparatus. The information contained herein does not purport to be comprehensive or final as the apparatus is subject to being altered and/or superseded. Recipients should not rely on this information. Any liabilities are hereby expressly disclaimed.

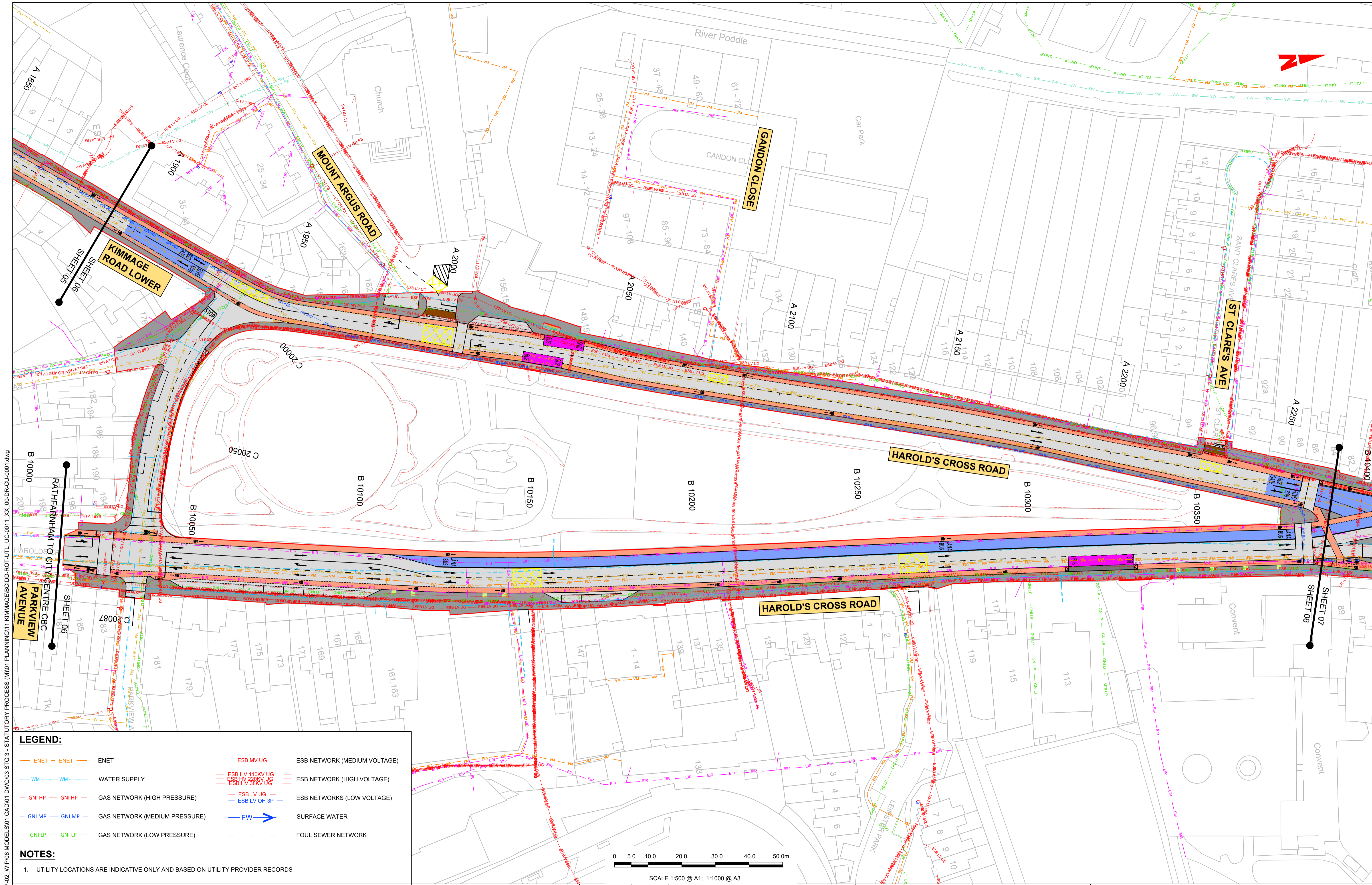
e. The information contained herein has been provided by the NTA but does not purport to be comprehensive or final. Recipients should not rely on the information. Neither the NTA nor any of its directors, officers, employees, agents, stakeholders or advisers make any representation or warranty as to, or accept any liability or responsibility in relation to, the adequacy, accuracy, reasonableness or completeness of the information provided as part of this document or any matter on which the information is based (including but not limited to loss or damage arising as a result of reliance by recipients on the information or any part of it). Any liabilities are hereby expressly disclaimed.

Rev	Date	Drn	Chk'd	App'd	Description
M01	FEB 2023	GZ	EE	SMG	ISSUED FOR PHASE 4: PLANNING

Client NTA Udarás Náisiúnta Iompair National Transport Authority		Engineering Designer CIROD TYPSA	
Date FEB 2023	Scale 1:500 @ A1 1:1000 @ A3	Drawn DS	Checked EE
Programme Code BCIDD	Originator Code ROT	QMS Code	Approved SMG

Programme Title BUSCONNECTS DUBLIN CORE BUS CORRIDORS INFRASTRUCTURE WORKS			
Drawing Title KIMMAGE TO CITY CENTRE CORE BUS CORRIDOR SCHEME COMBINED EXISTING UTILITIES RECORDS			
Drawing File Name BCIDD-ROT-UTL_UC-0011_XX_00-DR-CU-0005	Sheet Number 05 of 14	Status A	Rev M01

DO NOT SCALE USE FIGURED DIMENSIONS ONLY



LEGEND:

	ENET	ENET		ESB MV UG	ESB NETWORK (MEDIUM VOLTAGE)
	WATER SUPPLY			ESB HV 110KV UG	ESB NETWORK (HIGH VOLTAGE)
	GAS NETWORK (HIGH PRESSURE)			ESB LV UG	ESB NETWORKS (LOW VOLTAGE)
	GAS NETWORK (MEDIUM PRESSURE)			FW	SURFACE WATER
	GAS NETWORK (LOW PRESSURE)				FOUL SEWER NETWORK

NOTES:

1. UTILITY LOCATIONS ARE INDICATIVE ONLY AND BASED ON UTILITY PROVIDER RECORDS

\\p01\p01\1917\1917-02_WIP\08 MODELS\01 CAD\01 PLANNING\11 KIMMAGE\BCID-ROT-UTL_UC-0011_XX_00-DR-CU-0001.dwg

Disclaimer

a. © National Transport Authority (NTA) 2022. This drawing is confidential and the copyright in it is owned by NTA. This drawing must not be either loaned, copied or otherwise reproduced in whole or in part or used for any purpose without the prior permission of NTA.

b. This drawing is to be used for the design element identified in the titleblock. Other information shown is to be considered indicative only. The drawing is to be read in conjunction with all other relevant design drawings.

c. O.S. data used for plans are printed under © Ordnance Survey Ireland Government of Ireland. All rights reserved. Licence Number 2022/OSI_NMA_180 National Transport Authority. All elevations are in metres and relate to OSI Geoid Model (OSGM15) Mean Head. All Co-ordinates are in Irish Transverse Mercator Grid (ITM) as defined by OSI active local GPS station.

d. Information concerning the position of apparatus shown on this drawing is based on drawings supplied by the utility owners and/or the utility works contractor, whilst every care has been taken in the preparation of this drawing, positions should be taken as approximate and are intended for general guidance only and no representation is made by the NTA as to the accuracy, completeness, sufficiency or otherwise of this drawing and the position of the apparatus. The information contained herein does not purport to be comprehensive or final as the apparatus is subject to being altered and/or superceded. Recipients should not rely on this information. Any liabilities are hereby expressly disclaimed.

e. The information contained herein has been provided by the NTA but does not purport to be comprehensive or final. Recipients should not rely on the information. Neither the NTA nor any of its directors, officers, employees, agents, stakeholders or advisers make any representation or warranty as to, or accept any liability or responsibility in relation to, the adequacy, accuracy, reasonableness or completeness of the information provided as part of this document or any matter on which the information is based (including but not limited to loss or damage arising as a result of reliance by recipients on the information or any part of it). Any liabilities are hereby expressly disclaimed.



Rev	Date	Drn	Chk'd	App'd	Description
M01	FEB 2023	GZ	EE	SMG	ISSUED FOR PHASE 4: PLANNING

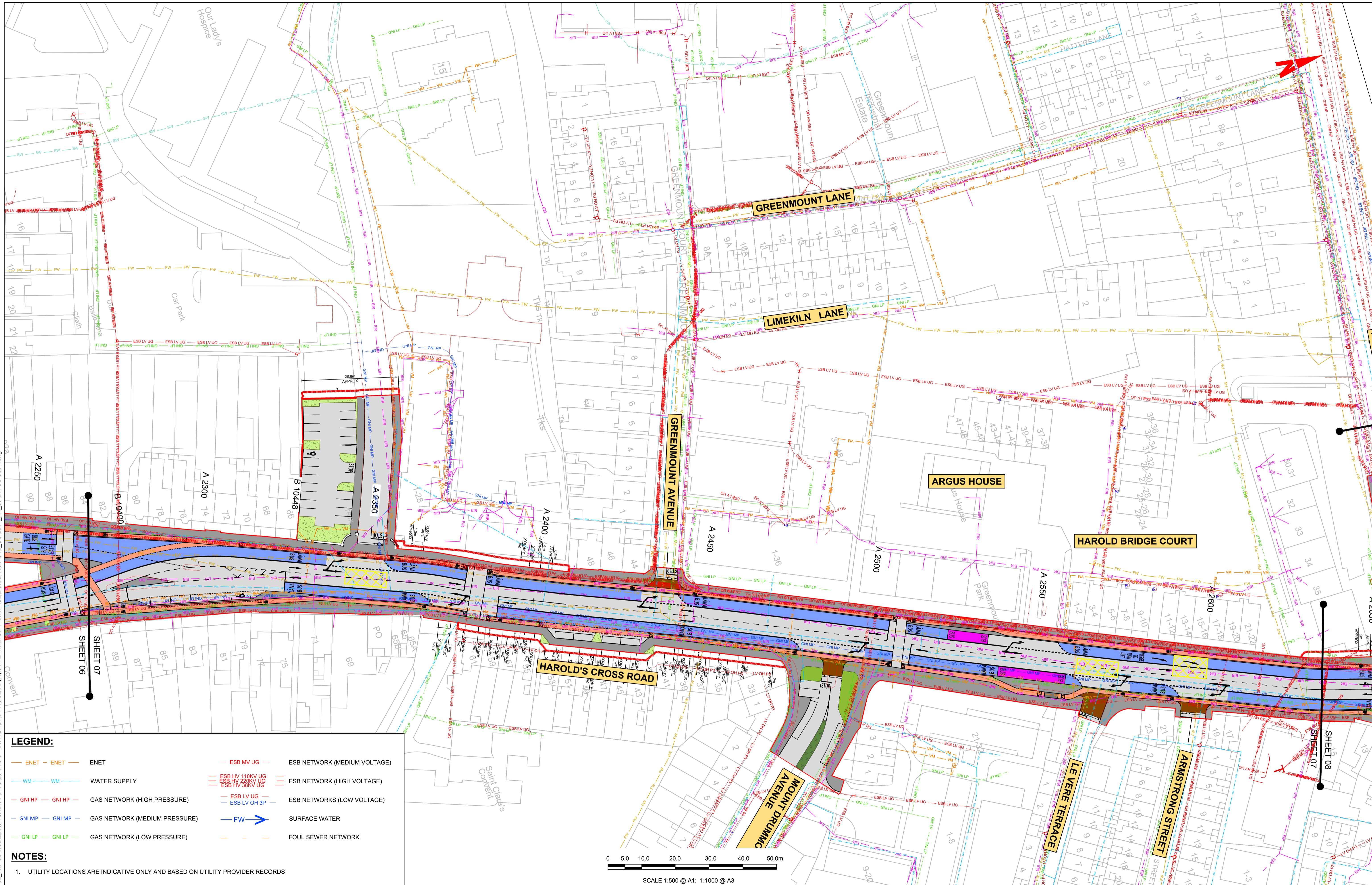
Client

NTA
Udarás Náisiúnta Iompair
National Transport Authority

Engineering Designer			
PROD	TYPSA		
Date FEB 2023	Scale 1:500 @ A1 1:1000 @ A3	Drawn DS	Checked EE
Programme Code BCIDD	Originator Code ROT	QMS Code	Approved SMG

Programme Title			
BUSCONNECTS DUBLIN			
CORE BUS CORRIDORS INFRASTRUCTURE WORKS			
Drawing Title			
KIMMAGE TO CITY CENTRE CORE BUS CORRIDOR SCHEME COMBINED EXISTING UTILITIES RECORDS			
Drawing File Name	Sheet Number	Status	Rev
BCIDD-ROT-UTL_UC-0011_XX_00-DR-CU-0006	06 of 14	A	M01

DO NOT SCALE USE FIGURED DIMENSIONS ONLY



LEGEND:

— ENET — ENET	— ESB MV UG —	— ESB NETWORK (MEDIUM VOLTAGE)
— WM — WM	— ESB HV 110KV UG	— ESB NETWORK (HIGH VOLTAGE)
— GNI HP — GNI HP	— ESB HV 220KV UG	— ESB NETWORK (HIGH VOLTAGE)
— GNI MP — GNI MP	— ESB HV 38KV UG	— ESB NETWORK (HIGH VOLTAGE)
— GNI LP — GNI LP	— ESB LV UG —	— ESB NETWORKS (LOW VOLTAGE)
	— ESB LV OH 3P —	— ESB NETWORKS (LOW VOLTAGE)
	— FW —	— SURFACE WATER
	— — —	— FOUL SEWER NETWORK

NOTES:

1. UTILITY LOCATIONS ARE INDICATIVE ONLY AND BASED ON UTILITY PROVIDER RECORDS

Disclaimer:

a. © National Transport Authority (NTA) 2022. This drawing is confidential and the copyright in it is owned by NTA. This drawing must not be either loaned, copied or otherwise reproduced in whole or in part or used for any purpose without the prior permission of NTA.

b. This drawing is to be used for the design element identified in the titleblock. Other information shown is to be considered indicative only. The drawing is to be read in conjunction with all other relevant design drawings.

c. O.S. data used for plans are printed under © Ordnance Survey Ireland Government of Ireland. All rights reserved. Licence Number 2022/OSI_NMA_180 National Transport Authority. All elevations are in metres and relate to OSI Geoid Model (OSGM15) Mean Head. All Co-ordinates are in Irish Transverse Mercator Grid (ITM) as defined by OSI active local GPS station.

d. Information concerning the position of apparatus shown on this drawing is based on drawings supplied by the utility owners and/or the utility works contractor, whilst every care has been taken in the preparation of this drawing, positions should be taken as approximate and are intended for general guidance only and no representation is made by the NTA as to the accuracy, completeness, sufficiency or otherwise of this drawing and the position of the apparatus. The information contained herein does not purport to be comprehensive or final as the apparatus is subject to being altered and/or superceded. Recipients should not rely on this information. Any liabilities are hereby expressly disclaimed.



Rev	Date	Drm	Chk'd	App'd	Description
M01	FEB 2023	GZ	EE	SMG	ISSUED FOR PHASE 4: PLANNING

Client
NTA
 Údarás Náisiúnta Iompair
 National Transport Authority

Engineering Designer
PROD
 TYPSA

Programme Title
**BUSCONNECTS DUBLIN
 CORE BUS CORRIDORS INFRASTRUCTURE WORKS**

Drawing Title
 KIMMAGE TO CITY CENTRE CORE BUS CORRIDOR SCHEME
 COMBINED EXISTING UTILITIES RECORDS

Drawing File Name
 BCIDD-ROT-UTL_UC-0011_XX_00-DR-CU-0007

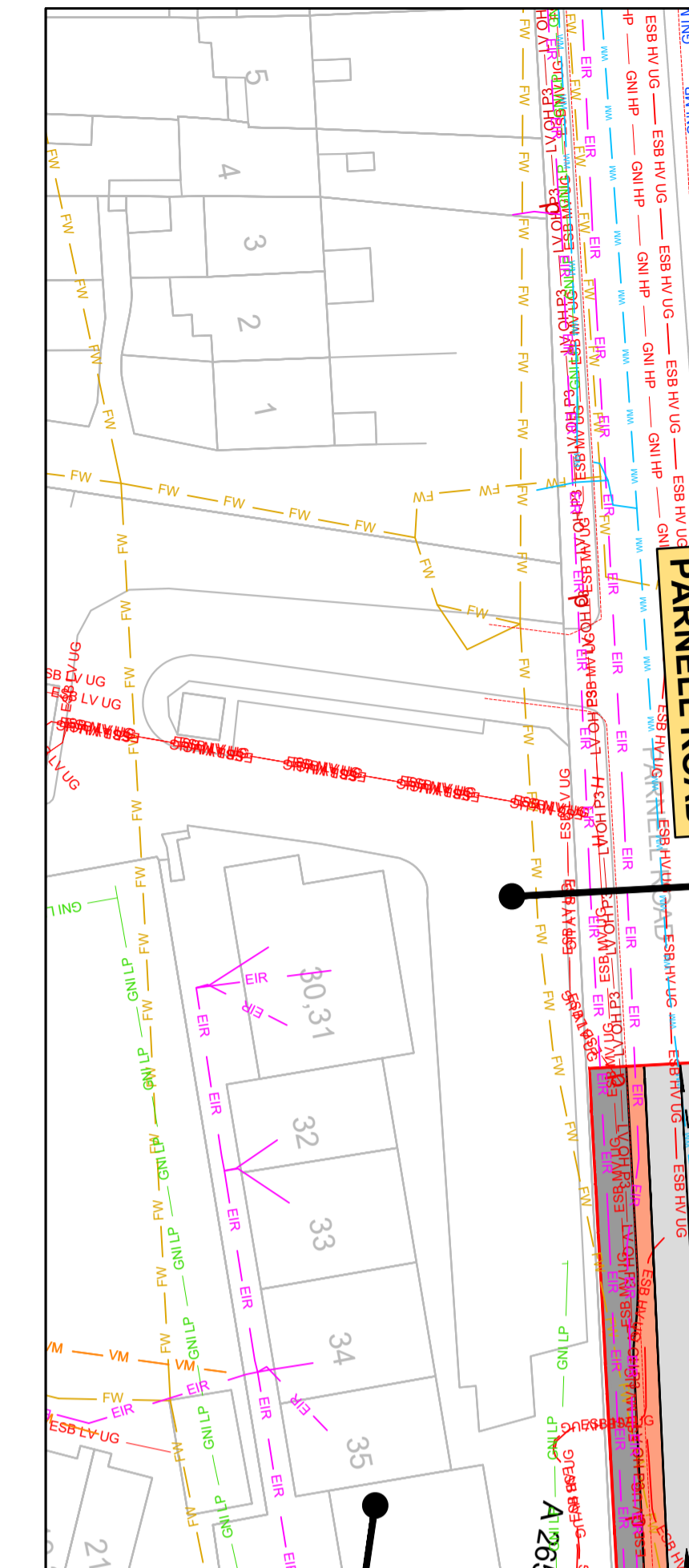
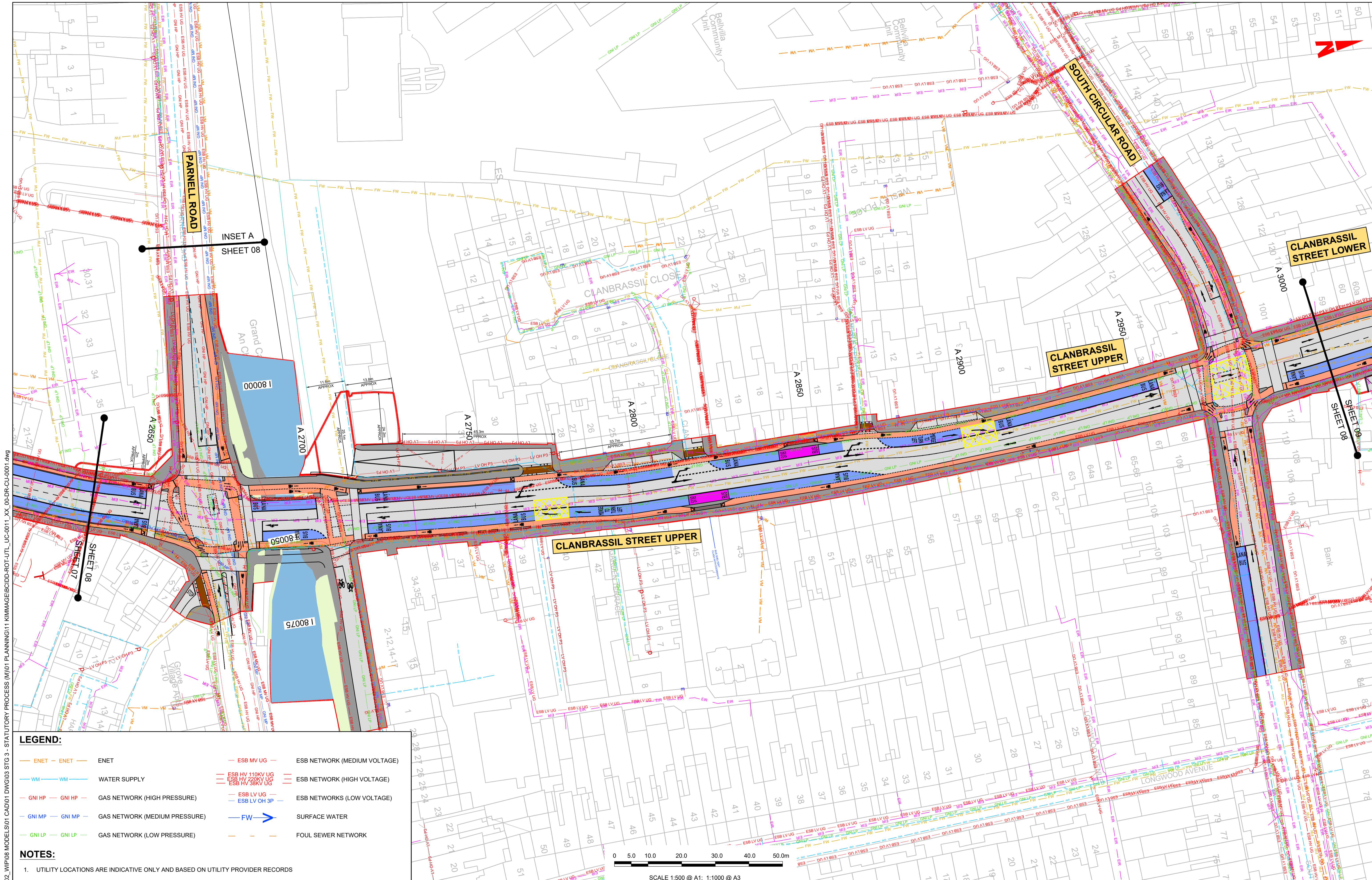
Sheet Number
 07 of 14

Status
 A

Rev
 M01

DO NOT SCALE USE FIGURED DIMENSIONS ONLY

W:\000000\1917117-02\WIP\08 MODELS\01 CAD\01 PLANNING\11 KIMMAGE\BCIDD-ROT-UTL_UC-0011_XX_00-DR-CU-0001.dwg

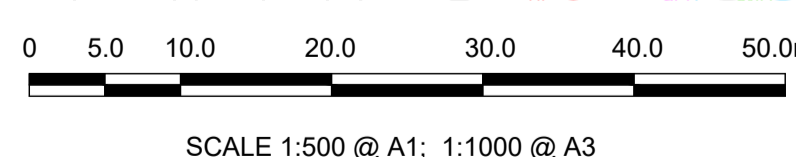


LEGEND:

	ENET	ENET		ESB MV UG	ESB NETWORK (MEDIUM VOLTAGE)
	WM	WATER SUPPLY		ESB HV 110KV UG	ESB NETWORK (HIGH VOLTAGE)
	GNI HP	GAS NETWORK (HIGH PRESSURE)		ESB LV UG	ESB NETWORKS (LOW VOLTAGE)
	GNI MP	GAS NETWORK (MEDIUM PRESSURE)		ESB LV OH 3P	
	GNI LP	GAS NETWORK (LOW PRESSURE)		FW	SURFACE WATER
					FOUL SEWER NETWORK

NOTES:

- UTILITY LOCATIONS ARE INDICATIVE ONLY AND BASED ON UTILITY PROVIDER RECORDS



Disclaimer:

a. © National Transport Authority (NTA) 2022. This drawing is confidential and the copyright in it is owned by NTA. This drawing must not be either loaned, copied or otherwise reproduced in whole or in part or used for any purpose without the prior permission of NTA.

b. This drawing is to be used for the design element identified in the titleblock. Other information shown is to be considered indicative only. The drawing is to be read in conjunction with all other relevant design drawings.

c. O.S. data used for plans are printed under © Ordnance Survey Ireland Government of Ireland. All rights reserved. Licence Number 2022/OSI_NMA_180 National Transport Authority. All elevations are in metres and relate to OSI Geoid Model (OSGM15) Mean Head. All Co-ordinates are in Irish Transverse Mercator Grid (ITM) as defined by OSI active local GPS station.

d. Information concerning the position of apparatus shown on this drawing is based on drawings supplied by the utility owners and/or the utility works contractor, whilst every care has been taken in the preparation of this drawing, positions should be taken as approximate and are intended for general guidance only and no representation is made by the NTA as to the accuracy, completeness, sufficiency or otherwise of this drawing and the position of the apparatus. The information contained herein does not purport to be comprehensive or final as the apparatus is subject to being altered and/or superseded. Recipients should not rely on this information. Any liabilities are hereby expressly disclaimed.

e. The information contained herein has been provided by the NTA but does not purport to be comprehensive or final. Recipients should not rely on the information. Neither the NTA nor any of its directors, officers, employees, agents, stakeholders or advisers make any representation or warranty as to, or accept any liability or responsibility in relation to, the adequacy, accuracy, reasonableness or completeness of the information provided as part of this document or any matter on which the information is based (including but not limited to loss or damage arising as a result of reliance by recipients on the information or any part of it). Any liabilities are hereby expressly disclaimed.

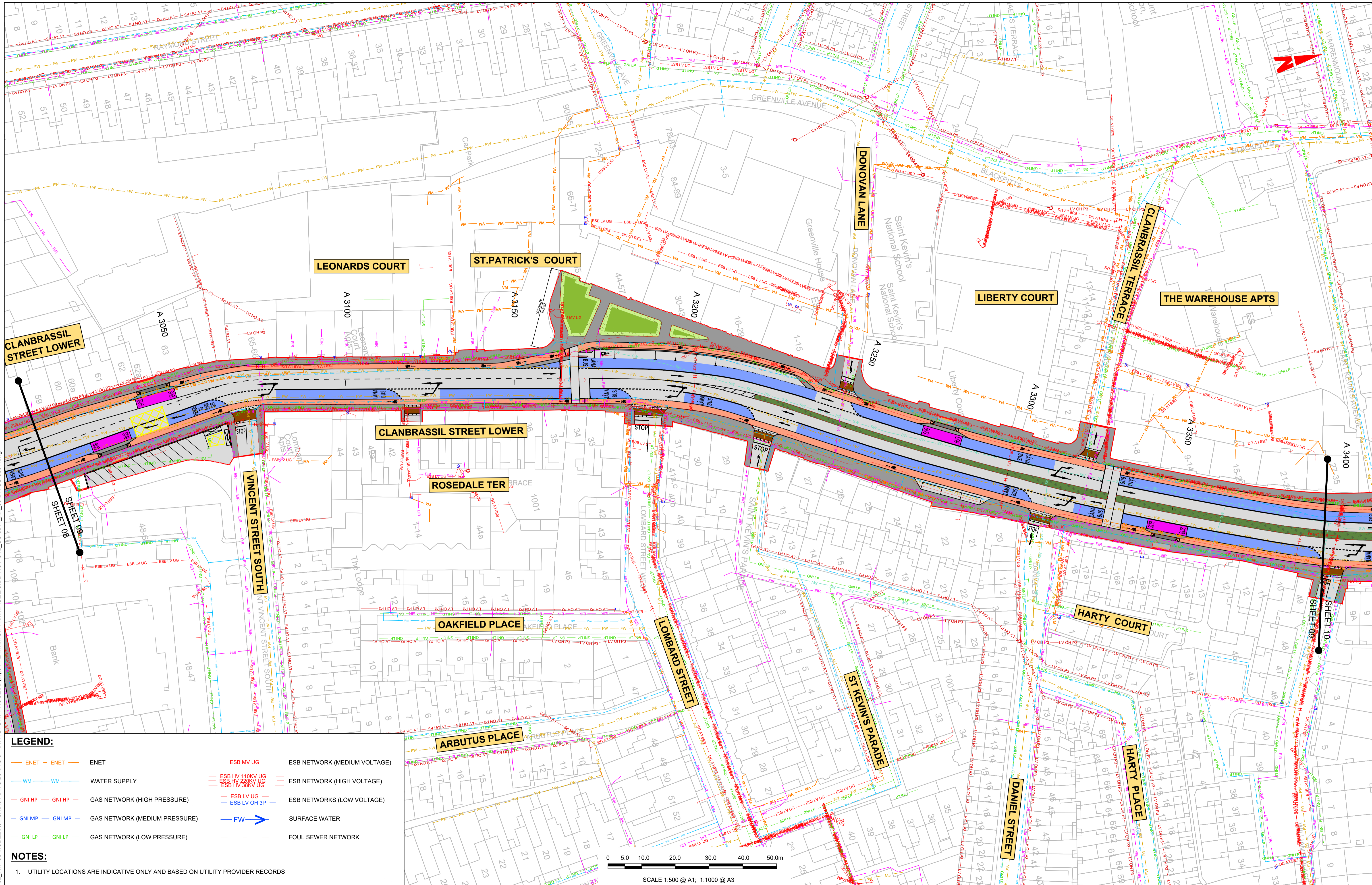
Rev	Date	Drn	Chk'd	App'd	Description
M01	FEB 2023	GZ	EE	SMG	ISSUED FOR PHASE 4: PLANNING

Client Údarás Náisiúnta Iompair National Transport Authority		Engineering Designer I-ROD TYPSA		
Date	Scale	Drawn	Checked	Approved
FEB 2023	1:500 @ A1 1:1000 @ A3	DS	EE	SMG
Programme Code	Originator Code	QMS Code		
BCIDD	ROT			

Programme Title BUSCONNECTS DUBLIN CORE BUS CORRIDORS INFRASTRUCTURE WORKS			
Drawing Title KIMMAGE TO CITY CENTRE CORE BUS CORRIDOR SCHEME COMBINED EXISTING UTILITIES RECORDS			
Drawing File Name	Sheet Number	Status	Rev
BCIDD-ROT-UTL_UC-0011_XX_00-DR-CU-0008	08 of 14	A	M01

DO NOT SCALE USE FIGURED DIMENSIONS ONLY

\\noddup\p\2019\1917\1917-02_WIP\08 MODELS\01 CAD\01 PLANNING\11 KIMMAGE\BDD-ROT-UTL_UC-0011_XX_00-DR-CU-0001.dwg



LEGEND:

— ENET — ENET	— ESB MV UG — ESB NETWORK (MEDIUM VOLTAGE)
— WM — WM	— ESB HV 110KV UG / ESB HV 220KV UG / ESB HV 38KV UG — ESB NETWORK (HIGH VOLTAGE)
— GNI HP — GNI HP	— ESB LV UG / ESB LV OH 3P — ESB NETWORKS (LOW VOLTAGE)
— GNI MP — GNI MP	— FW — SURFACE WATER
— GNI LP — GNI LP	— — FOUL SEWER NETWORK

NOTES:

- UTILITY LOCATIONS ARE INDICATIVE ONLY AND BASED ON UTILITY PROVIDER RECORDS

Disclaimer

a. © National Transport Authority (NTA) 2022. This drawing is confidential and the copyright in it is owned by NTA. This drawing must not be either loaned, copied or otherwise reproduced in whole or in part or used for any purpose without the prior permission of NTA.

b. This drawing is to be used for the design element identified in the titleblock. Other information shown is to be considered indicative only. The drawing is to be read in conjunction with all other relevant design drawings.

c. O.S. data used for plans are printed under © Ordnance Survey Ireland Government of Ireland. All rights reserved. Licence Number 2022/OSI_NMA_180 National Transport Authority. All elevations are in metres and relate to OSI Geoid Model (OSGM15) Mean Head. All Co-ordinates are in Irish Transverse Mercator Grid (ITM) as defined by OSI active local GPS station.

d. Information concerning the position of apparatus shown on this drawing is based on drawings supplied by the utility owners and/or the utility works contractor, whilst every care has been taken in the preparation of this drawing, positions should be taken as approximate and are intended for general guidance only and no representation is made by the NTA as to the accuracy, completeness, sufficiency or otherwise of this information. The information contained herein does not purport to be comprehensive or final as the apparatus is subject to being altered and/or superseded. Recipients should not rely on this information. Any liabilities are hereby expressly disclaimed.

e. The information contained herein has been provided by the NTA but does not purport to be comprehensive or final. Recipients should not rely on the information. Neither the NTA nor any of its directors, officers, employees, agents, stakeholders or advisers make any representation or warranty as to, or accept any liability or responsibility in relation to, the adequacy, accuracy, reasonableness or completeness of the information provided as part of this document or any matter on which the information is based (including but not limited to loss or damage arising as a result of reliance by recipients on the information or any part of it). Any liabilities are hereby expressly disclaimed.

Rev	Date	Drn	Chk'd	App'd	Description
M01	FEB 2023	GZ	EE	SMG	ISSUED FOR PHASE 4: PLANNING

Client
NTA
 Údarás Náisiúnta Iompair
 National Transport Authority

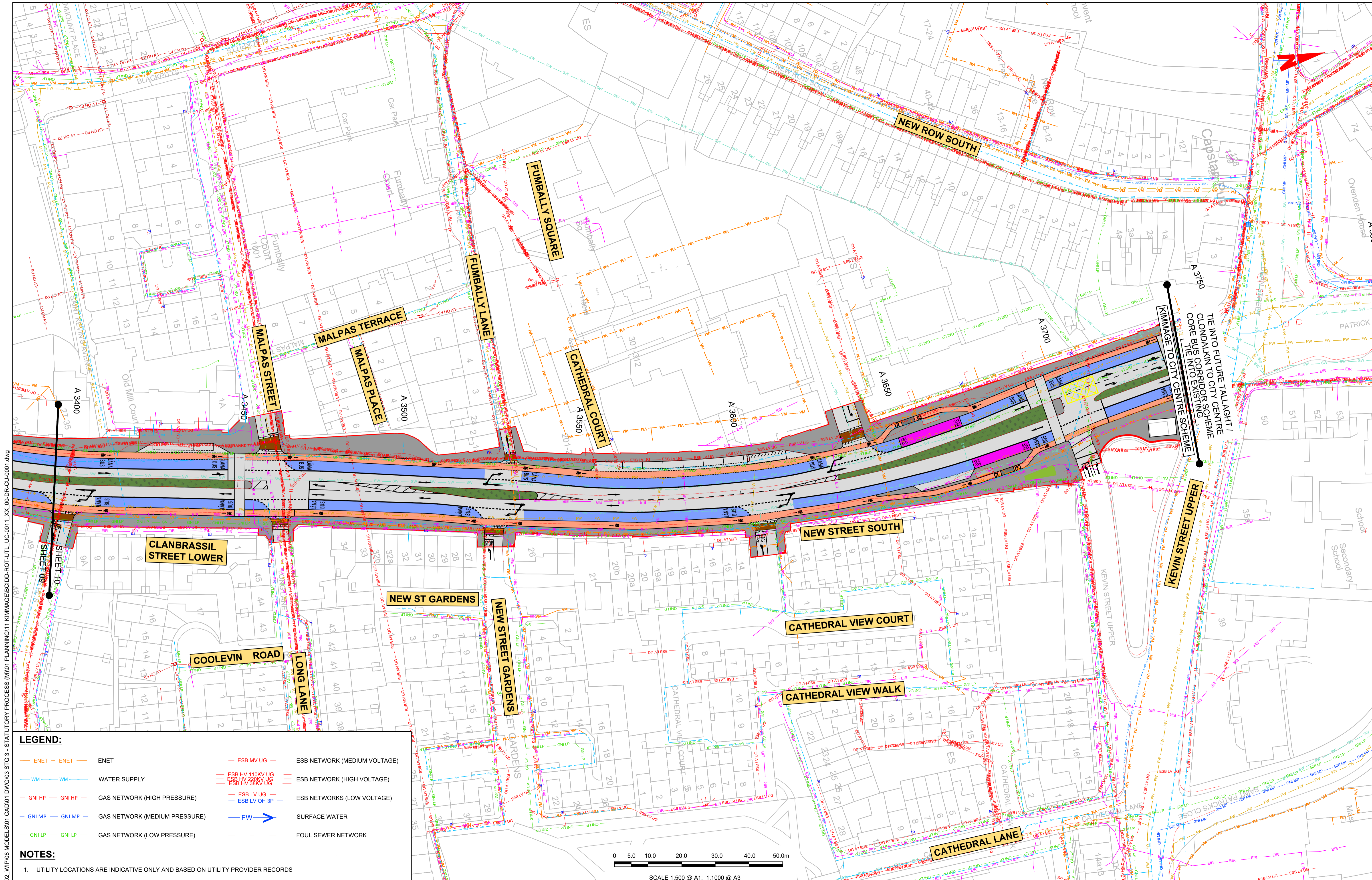
Engineering Designer
PROD
 TYPSA

Date: FEB 2023
 Scale: 1:500 @ A1, 1:1000 @ A3
 Drawn: DS
 Checked: EE
 Approved: SMG

Programme Code: BCIDD
 Originator Code: ROT
 QMS Code:

Programme Title BUSCONNECTS DUBLIN CORE BUS CORRIDORS INFRASTRUCTURE WORKS			
Drawing Title KIMMAGE TO CITY CENTRE CORE BUS CORRIDOR SCHEME COMBINED EXISTING UTILITIES RECORDS			
Drawing File Name BCIDD-ROT-UTL_UC-0011_XX_00-DR-CU-0009	Sheet Number 09 of 14	Status A	Rev M01

DO NOT SCALE USE FIGURED DIMENSIONS ONLY

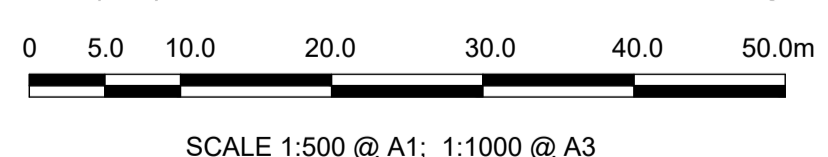


LEGEND:

	ENET	ENET		ESB MV UG	ESB NETWORK (MEDIUM VOLTAGE)
	WM	WATER SUPPLY		ESB HV 110KV UG ESB HV 33KV UG ESB HV 38KV UG	ESB NETWORK (HIGH VOLTAGE)
	GNI HP	GAS NETWORK (HIGH PRESSURE)		ESB LV UG	ESB NETWORKS (LOW VOLTAGE)
	GNI MP	GAS NETWORK (MEDIUM PRESSURE)		ESB LV OH 3P	SURFACE WATER
	GNI LP	GAS NETWORK (LOW PRESSURE)		FW	FOUL SEWER NETWORK

NOTES:

- UTILITY LOCATIONS ARE INDICATIVE ONLY AND BASED ON UTILITY PROVIDER RECORDS



Disclaimer:

a. © National Transport Authority (NTA) 2022. This drawing is confidential and the copyright in it is owned by NTA. This drawing must not be either loaned, copied or otherwise reproduced in whole or in part or used for any purpose without the prior permission of NTA.

b. This drawing is to be used for the design element identified in the title block. Other information shown is to be considered indicative only. The drawing is to be read in conjunction with all other relevant design drawings.

c. O.S. data used for plans are printed under © Ordnance Survey Ireland Government of Ireland. All rights reserved. Licence Number 2022/OSI_NMA_180 National Transport Authority. All elevations are in metres and relate to OSI Geoid Model (OSGM15) Mean Head. All Co-ordinates are in Irish Transverse Mercator Grid (ITM) as defined by OSI active local GPS station.

d. Information concerning the position of apparatus shown on this drawing is based on drawings supplied by the utility owners and/or the utility works contractor, whilst every care has been taken in the preparation of this drawing, positions should be taken as approximate and are intended for general guidance only and no representation is made by the NTA as to the accuracy, completeness, sufficiency or otherwise of this information. The information contained herein does not purport to be comprehensive or final as the apparatus is subject to being altered and/or superseded. Recipients should not rely on this information. Any liabilities are hereby expressly disclaimed.

e. The information contained herein has been provided by the NTA but does not purport to be comprehensive or final. Recipients should not rely on the information. Neither the NTA nor any of its directors, officers, employees, agents, stakeholders or advisers make any representation or warranty as to, or accept any liability or responsibility in relation to, the adequacy, accuracy, reasonableness or completeness of the information provided as part of this document or any matter on which the information is based (including but not limited to loss or damage arising as a result of reliance by recipients on the information or any part of it). Any liabilities are hereby expressly disclaimed.

Rev	Date	Drn	Chk'd	App'd	Description
M01	FEB 2023	GZ	EE	SMG	ISSUED FOR PHASE 4: PLANNING

 Údarás Náisiúnta Iompair National Transport Authority		 I-Rod TYPSA		
Date	Scale	Drawn	Checked	Approved
FEB 2023	1:500 @ A1 1:1000 @ A3	DS	EE	SMG
Programme Code	Originator Code	QMS Code		
BCIDD	ROT			

Programme Title BUSCONNECTS DUBLIN CORE BUS CORRIDORS INFRASTRUCTURE WORKS			
Drawing Title KIMMAGE TO CITY CENTRE CORE BUS CORRIDOR SCHEME COMBINED EXISTING UTILITIES RECORDS			
Drawing File Name	Sheet Number	Status	Rev
BCIDD-ROT-UTL_UC-0011_XX_00-DR-CU-0010	10 of 14	A	M01

DO NOT SCALE USE FIGURED DIMENSIONS ONLY

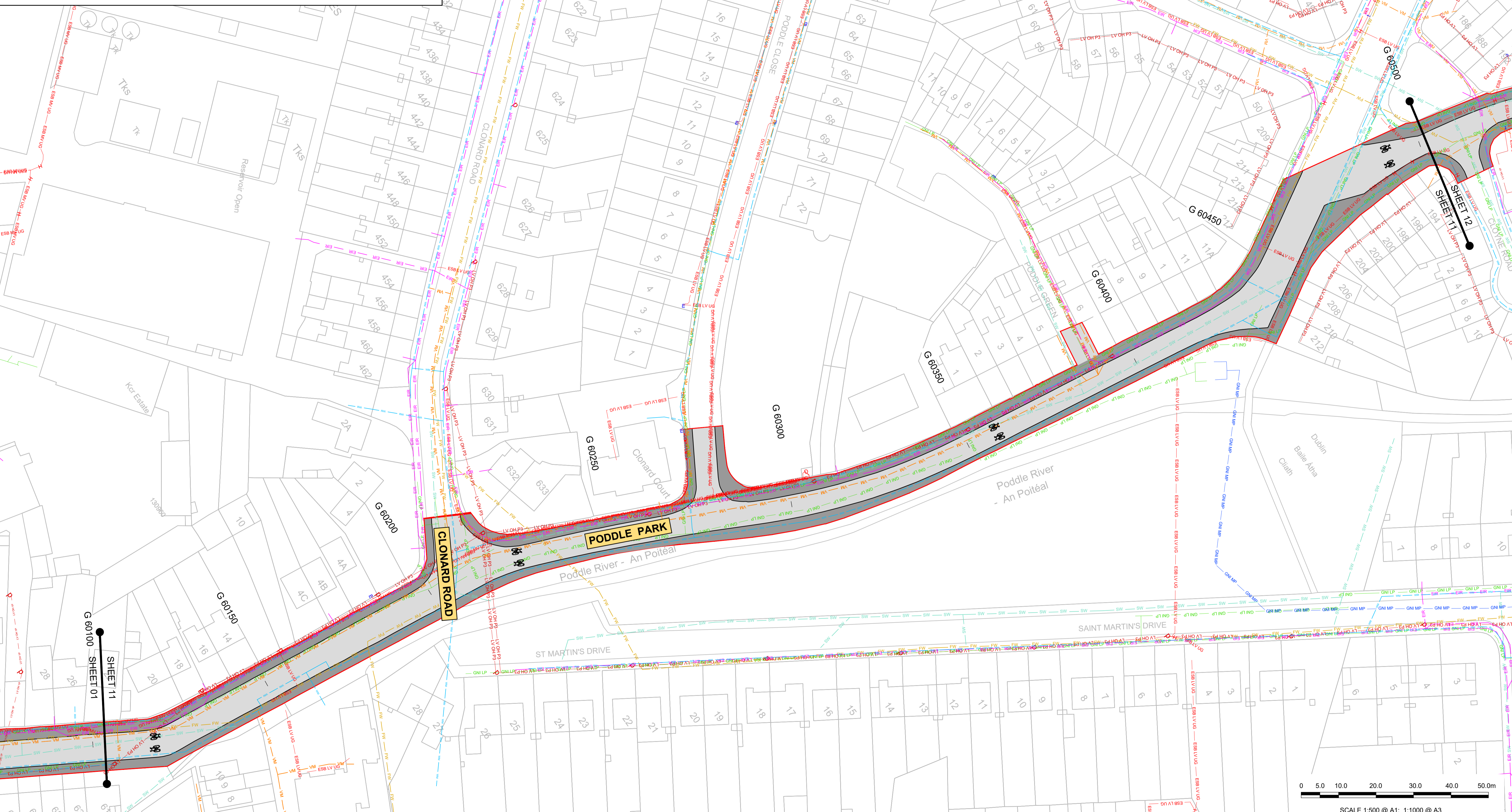
\\produbp1\j2019\1917\171-02_WIP\08 MODELS\01 CAD\01 PLANNING\11 KIMMAGE\BCIDD-ROT-UTL_UC-0011_XX_00-DR-CU-0001.dwg

LEGEND:

	ENET	ENET		ESB MV UG	ESB NETWORK (MEDIUM VOLTAGE)
	WM	WATER SUPPLY		ESB HV 110KV UG	ESB NETWORK (HIGH VOLTAGE)
	GNI HP	GAS NETWORK (HIGH PRESSURE)		ESB HV 220KV UG	
	GNI MP	GAS NETWORK (MEDIUM PRESSURE)		ESB HV 38KV UG	
	GNI LP	GAS NETWORK (LOW PRESSURE)		ESB LV UG	ESB NETWORKS (LOW VOLTAGE)
				FW	SURFACE WATER
					FOUL SEWER NETWORK

NOTES:

1. UTILITY LOCATIONS ARE INDICATIVE ONLY AND BASED ON UTILITY PROVIDER RECORDS



Disclaimer

a. © National Transport Authority (NTA) 2022. This drawing is confidential and the copyright in it is owned by NTA. This drawing must not be either loaned, copied or otherwise reproduced in whole or in part or used for any purpose without the prior permission of NTA.

b. This drawing is to be used for the design element identified in the titleblock. Other information shown is to be considered indicative only. The drawing is to be read in conjunction with all other relevant design drawings.

c. O.S. data used for plans are printed under © Ordnance Survey Ireland Government of Ireland. All rights reserved. Licence Number 2022/OSI_NMA_180 National Transport Authority. All elevations are in metres and relate to OSI Geoid Model (OSGM15) Mean Head. All Co-ordinates are in Irish Transverse Mercator Grid (ITM) as defined by OSI active local GPS station.

d. Information concerning the position of apparatus shown on this drawing is based on drawings supplied by the utility owners and/or the utility works contractor, whilst every care has been taken in the preparation of this drawing, positions should be taken as approximate and are intended for general guidance only and no representation is made by the NTA as to the accuracy, completeness, sufficiency or otherwise of this information. The information contained herein does not purport to be comprehensive or final as the apparatus is subject to being altered and/or superceded. Recipients should not rely on this information. Any liabilities are hereby expressly disclaimed.

e. The information contained herein has been provided by the NTA but does not purport to be comprehensive or final. Recipients should not rely on the information. Neither the NTA nor any of its directors, officers, employees, agents, stakeholders or advisers make any representation or warranty as to, or accept any liability or responsibility in relation to, the adequacy, accuracy, reasonableness or completeness of the information provided as part of this document or any matter on which the information is based (including but not limited to loss or damage arising as a result of reliance by recipients on the information or any part of it). Any liabilities are hereby expressly disclaimed.



Rev	Date	Drn	Chk'd	App'd	Description
M01	FEB 2023	GZ	EE	SMG	ISSUED FOR PHASE 4: PLANNING

Client

Udarás Náisiúnta Iompair
National Transport Authority

Engineering Designer

Drawn DS
Checked EE
Approved SMG

Programme Title
**BUSCONNECTS DUBLIN
CORE BUS CORRIDORS INFRASTRUCTURE WORKS**

Drawing Title
KIMMAGE TO CITY CENTRE CORE BUS CORRIDOR SCHEME
COMBINED EXISTING UTILITIES RECORDS

Drawing File Name
BCIDD-ROT-UTL_UC-0011_XX_00-DR-CU-0011

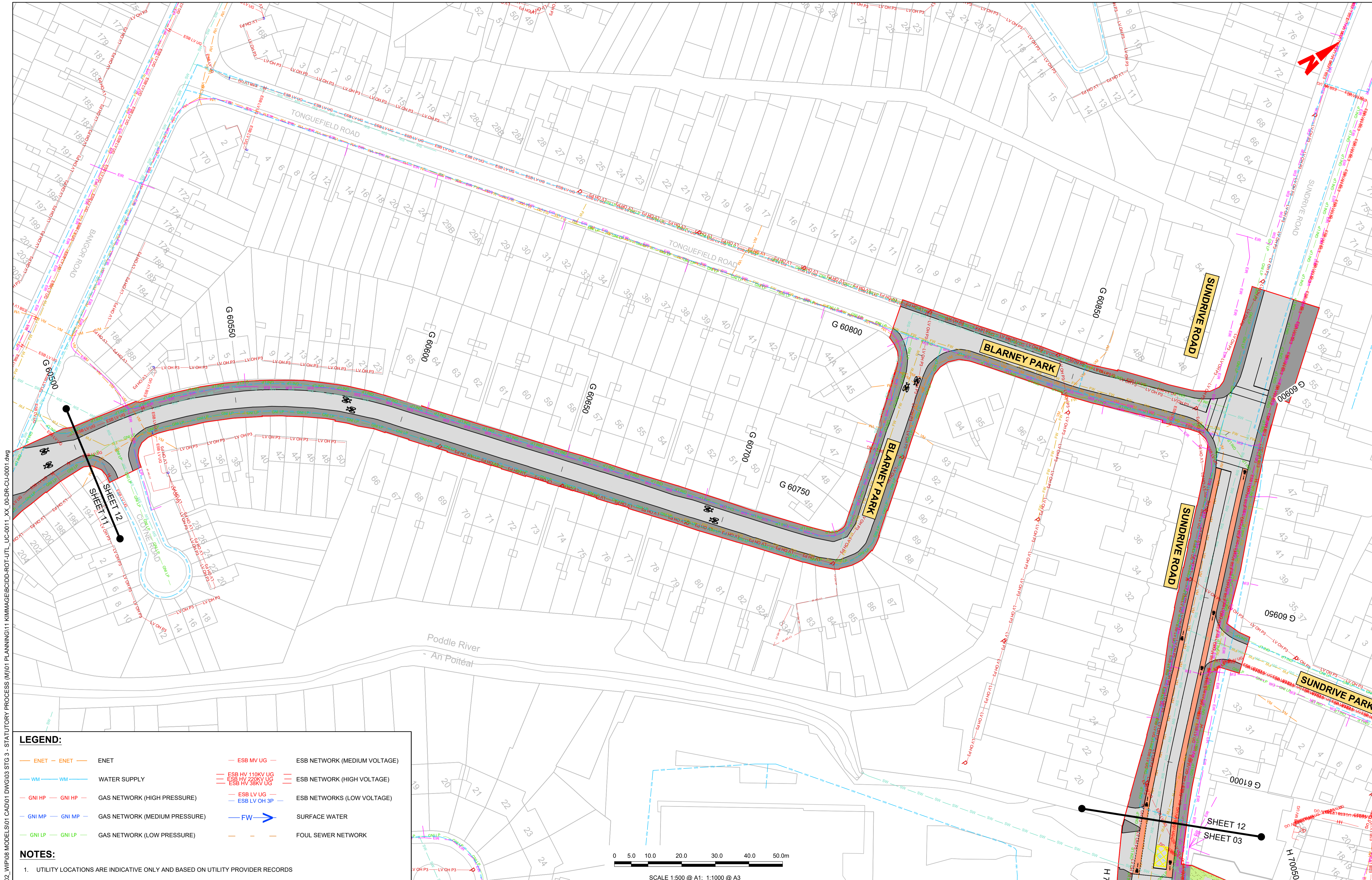
Sheet Number
11 of 14

Status
A

Rev
M01

DO NOT SCALE USE FIGURED DIMENSIONS ONLY

\\produbp1\U201917\1717-02_WIP\08 MODELS\01 CAD\01 PLANNING\11 KIMMAGE\BCIDD-ROT-UTL_UC-0011_XX_00-DR-CU-0001.dwg



LEGEND:

	ENET	ENET		ESB MV UG	ESB NETWORK (MEDIUM VOLTAGE)
	WM	WATER SUPPLY		ESB HV 110KV UG	ESB NETWORK (HIGH VOLTAGE)
	GNI HP	GAS NETWORK (HIGH PRESSURE)		ESB HV 220KV UG	
	GNI MP	GAS NETWORK (MEDIUM PRESSURE)		ESB LV UG	ESB NETWORKS (LOW VOLTAGE)
	GNI LP	GAS NETWORK (LOW PRESSURE)		ESB LV OH 3P	
				FW	SURFACE WATER
					FOUL SEWER NETWORK

NOTES:

- UTILITY LOCATIONS ARE INDICATIVE ONLY AND BASED ON UTILITY PROVIDER RECORDS



SCALE 1:500 @ A1; 1:1000 @ A3

Disclaimer:

a. © National Transport Authority (NTA) 2022. This drawing is confidential and the copyright in it is owned by NTA. This drawing must not be either loaned, copied or otherwise reproduced in whole or in part or used for any purpose without the prior permission of NTA.

b. This drawing is to be used for the design element identified in the titleblock. Other information shown is to be considered indicative only. The drawing is to be read in conjunction with all other relevant design drawings.

c. O.S. data used for plans are printed under © Ordnance Survey Ireland Government of Ireland. All rights reserved. Licence Number 2022/OSI_NMA_180 National Transport Authority. All elevations are in metres and relate to OSI Geoid Model (OSGM15) Mean Head. All Co-ordinates are in Irish Transverse Mercator Grid (ITM) as defined by OSI active local GPS station.

d. Information concerning the position of apparatus shown on this drawing is based on drawings supplied by the utility owners and/or the utility works contractor, whilst every care has been taken in the preparation of this drawing, positions should be taken as approximate and are intended for general guidance only and no representation is made by the NTA as to the accuracy, completeness, sufficiency or otherwise of this drawing and the position of the apparatus. The information contained herein does not purport to be comprehensive or final as the apparatus is subject to being altered and/or superseded. Recipients should not rely on this information. Any liabilities are hereby expressly disclaimed.

e. The information contained herein has been provided by the NTA but does not purport to be comprehensive or final. Recipients should not rely on the information. Neither the NTA nor any of its directors, officers, employees, agents, stakeholders or advisers make any representation or warranty as to, or accept any liability or responsibility in relation to, the adequacy, accuracy, reasonableness or completeness of the information provided as part of this document or any matter on which the information is based (including but not limited to loss or damage arising as a result of reliance by recipients on the information or any part of it). Any liabilities are hereby expressly disclaimed.



Rev	Date	Drm	Chk'd	App'd	Description
M01	FEB 2023	GZ	EE	SMG	ISSUED FOR PHASE 4: PLANNING

Client NTA Udarás Náisiúnta Iompair National Transport Authority		Engineering Designer CIROD TYPSA		
Date FEB 2023	Scale 1:500 @ A1 1:1000 @ A3	Drawn DS	Checked EE	Approved SMG
Programme Code BCIDD	Originator Code ROT	QMS Code		

Programme Title BUSCONNECTS DUBLIN CORE BUS CORRIDORS INFRASTRUCTURE WORKS				
Drawing Title KIMMAGE TO CITY CENTRE CORE BUS CORRIDOR SCHEME COMBINED EXISTING UTILITIES RECORDS				
Drawing File Name BCIDD-ROT-UTL_UC-0011_XX_00-DR-CU-0012	Sheet Number 12 of 14	Status A	Rev M01	

DO NOT SCALE USE FIGURED DIMENSIONS ONLY

\\produbp1\j2019\1917117-02\WIP08 MODELS\01 CAD\01 PLANNING\11 KIMMAGE\BCIDD-ROT-UTL_UC-0011_XX_00-DR-CU-0011.dwg



LEGEND:

	ENET	ENET		ESB MV UG	ESB NETWORK (MEDIUM VOLTAGE)
	WM	WATER SUPPLY		ESB HV 110KV UG	ESB NETWORK (HIGH VOLTAGE)
	GNI HP	GAS NETWORK (HIGH PRESSURE)		ESB HV 220KV UG	
	GNI MP	GAS NETWORK (MEDIUM PRESSURE)		ESB HV 33KV UG	
	GNI LP	GAS NETWORK (LOW PRESSURE)		ESB LV UG	ESB NETWORKS (LOW VOLTAGE)
				FW	SURFACE WATER
					FOUL SEWER NETWORK

NOTES:

- UTILITY LOCATIONS ARE INDICATIVE ONLY AND BASED ON UTILITY PROVIDER RECORDS



Disclaimer

a. © National Transport Authority (NTA) 2022. This drawing is confidential and the copyright in it is owned by NTA. This drawing must not be either loaned, copied or otherwise reproduced in whole or in part or used for any purpose without the prior permission of NTA.

b. This drawing is to be used for the design element identified in the titleblock. Other information shown is to be considered indicative only. The drawing is to be read in conjunction with all other relevant design drawings.

c. O.S. data used for plans are printed under © Ordnance Survey Ireland Government of Ireland. All rights reserved. Licence Number 2022/OSI_NMA_180 National Transport Authority. All elevations are in metres and relate to OSI Geoid Model (OSGM15) Mean Head. All Co-ordinates are in Irish Transverse Mercator Grid (ITM) as defined by OSI active local GPS station.

d. Information concerning the position of apparatus shown on this drawing is based on drawings supplied by the utility owners and/or the utility works contractor, whilst every care has been taken in the preparation of this drawing, positions should be taken as approximate and are intended for general guidance only and no representation is made by the NTA as to the accuracy, completeness, sufficiency or otherwise of this drawing and the position of the apparatus. The information contained herein does not purport to be comprehensive or final as the apparatus is subject to being altered and/or superseded. Recipients should not rely on this information. Any liabilities are hereby expressly disclaimed.

e. The information contained herein has been provided by the NTA but does not purport to be comprehensive or final. Recipients should not rely on the information. Neither the NTA nor any of its directors, officers, employees, agents, stakeholders or advisers make any representation or warranty as to, or accept any liability or responsibility in relation to, the adequacy, accuracy, reasonableness or completeness of the information provided as part of this document or any matter on which the information is based (including but not limited to loss or damage arising as a result of reliance by recipients on the information or any part of it). Any liabilities are hereby expressly disclaimed.



Rev	Date	Drn	Chk'd	App'd	Description
M01	FEB 2023	GZ	EE	SMG	ISSUED FOR PHASE 4: PLANNING

Client

Udárás Náisiúnta Iompair
National Transport Authority

Engineering Designer

Drawn DS
Checked EE
Approved SMG

Programme Title

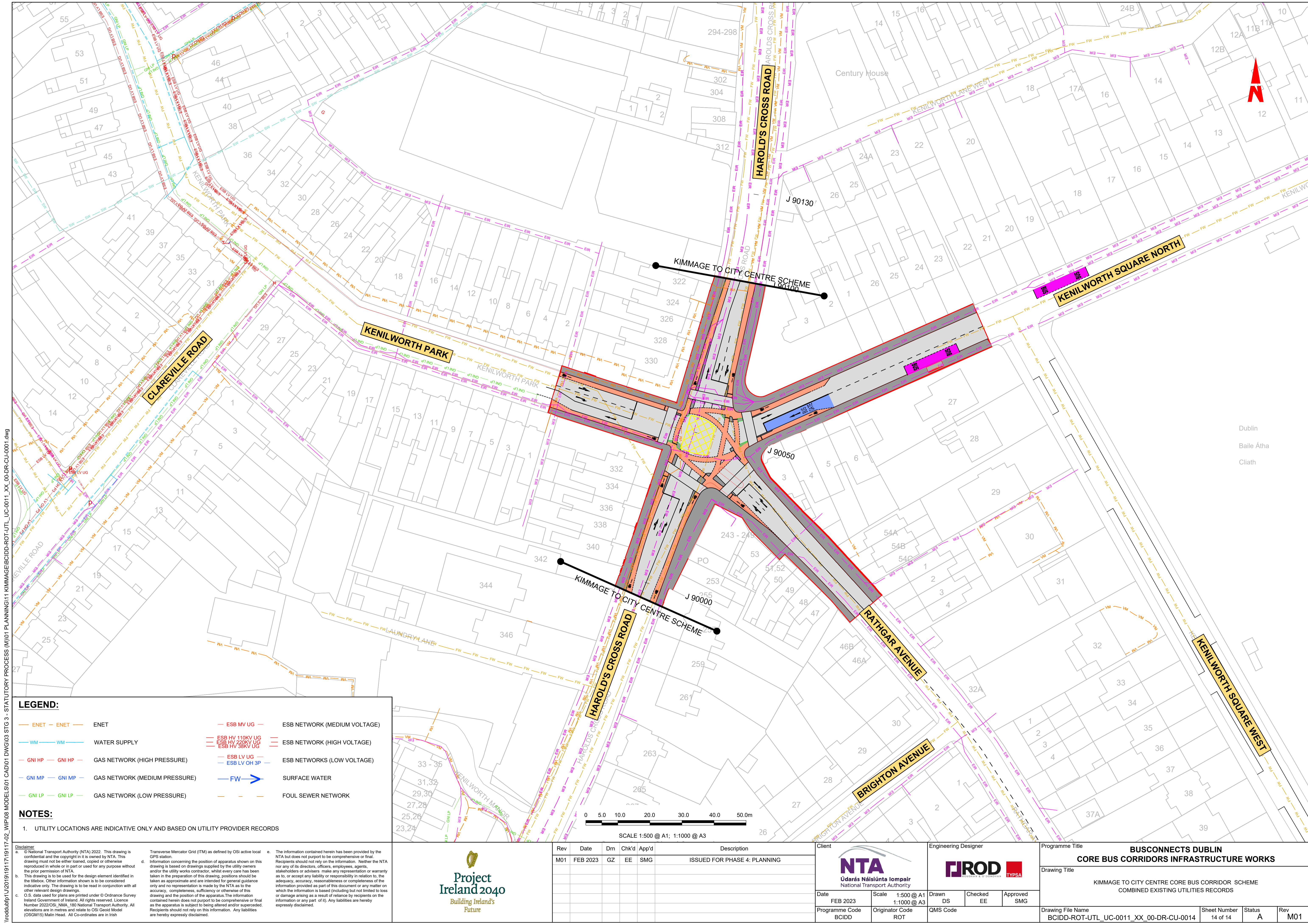
**BUSCONNECTS DUBLIN
CORE BUS CORRIDORS INFRASTRUCTURE WORKS**

Drawing Title

KIMMAGE TO CITY CENTRE CORE BUS CORRIDOR SCHEME
COMBINED EXISTING UTILITIES RECORDS

Drawing File Name	Sheet Number	Status	Rev
BCIDD-ROT-UTL_UC-0011_XX_00-DR-CU-0013	13 of 14	A	M01

DO NOT SCALE USE FIGURED DIMENSIONS ONLY



W:\000000\1917117-02_WIP08 MODELS\01 CAD\01 PLANNING\11 KIMMAGE\BCIDD-ROT-UTL_UC-0011_XX_00-DR-CU-0001.dwg
 Dublin
 Baile Átha
 Cliath

LEGEND:

	ENET	ENET		ESB MV UG	ESB NETWORK (MEDIUM VOLTAGE)
	WM	WATER SUPPLY		ESB HV 110KV UG	ESB NETWORK (HIGH VOLTAGE)
	GNI HP	GAS NETWORK (HIGH PRESSURE)		ESB HV 38KV UG	ESB NETWORK (HIGH VOLTAGE)
	GNI MP	GAS NETWORK (MEDIUM PRESSURE)		ESB LV UG	ESB NETWORKS (LOW VOLTAGE)
	GNI LP	GAS NETWORK (LOW PRESSURE)		ESB LV OH 3P	ESB NETWORKS (LOW VOLTAGE)
	FW	SURFACE WATER			FOUL SEWER NETWORK

NOTES:

1. UTILITY LOCATIONS ARE INDICATIVE ONLY AND BASED ON UTILITY PROVIDER RECORDS

Disclaimer:

a. © National Transport Authority (NTA) 2022. This drawing is confidential and the copyright in it is owned by NTA. This drawing must not be either loaned, copied or otherwise reproduced in whole or in part or used for any purpose without the prior permission of NTA.

b. This drawing is to be used for the design element identified in the titleblock. Other information shown is to be considered indicative only. The drawing is to be read in conjunction with all other relevant design drawings.

c. O.S. data used for plans are printed under © Ordnance Survey Ireland Government of Ireland. All rights reserved. Licence Number 2022/OSI_NMA_180 National Transport Authority. All elevations are in metres and relate to OSI Geoid Model (OSGM15) Mean Head. All Co-ordinates are in Irish Transverse Mercator Grid (ITM) as defined by OSI active local GPS station.

d. Information concerning the position of apparatus shown on this drawing is based on drawings supplied by the utility owners and/or the utility works contractor, whilst every care has been taken in the preparation of this drawing, positions should be taken as approximate and are intended for general guidance only and no representation is made by the NTA as to the accuracy, completeness, sufficiency or otherwise of this drawing and the position of the apparatus. The information contained herein does not purport to be comprehensive or final as the apparatus is subject to being altered and/or superceded. Recipients should not rely on this information. Any liabilities are hereby expressly disclaimed.

e. The information contained herein has been provided by the NTA but does not purport to be comprehensive or final. Recipients should not rely on the information. Neither the NTA nor any of its directors, officers, employees, agents, stakeholders or advisers make any representation or warranty as to, or accept any liability or responsibility in relation to, the adequacy, accuracy, reasonableness or completeness of the information provided as part of this document or any matter on which the information is based (including but not limited to loss or damage arising as a result of reliance by recipients on the information or any part of it). Any liabilities are hereby expressly disclaimed.



Rev	Date	Drm	Chk'd	App'd	Description
M01	FEB 2023	GZ	EE	SMG	ISSUED FOR PHASE 4: PLANNING

Client Údarás Náisiúnta Iompair National Transport Authority		Engineering Designer I-ROD TYPSA		
Date	Scale	Drawn	Checked	Approved
FEB 2023	1:500 @ A1 1:1000 @ A3	DS	EE	SMG
Programme Code	Originator Code	QMS Code		
BCIDD	ROT			

Programme Title BUSCONNECTS DUBLIN CORE BUS CORRIDORS INFRASTRUCTURE WORKS			
Drawing Title KIMMAGE TO CITY CENTRE CORE BUS CORRIDOR SCHEME COMBINED EXISTING UTILITIES RECORDS			
Drawing File Name	Sheet Number	Status	Rev
BCIDD-ROT-UTL_UC-0011_XX_00-DR-CU-0014	14 of 14	A	M01

DO NOT SCALE USE FIGURED DIMENSIONS ONLY