



**Appendix B14**  
GNI Asset Alterations



# BUSCONNECTS DUBLIN CORE BUS CORRIDORS INFRASTRUCTURE WORKS

## KIMMAGE TO CITY CENTRE CORE BUS CORRIDOR SCHEME

GNI ASSET ALTERATIONS. RECORDS AND PROPOSED WORKS.	
DRAWING SERIES NUMBER(S)	DRAWING SERIES DESCRIPTION
BCIDD-ROT-UTL_IX-0011_XX_00-DR-CU-0005	KIMMAGE TO CITY CENTRE CORE BUS CORRIDOR SCHEME. GNI ASSET ALTERNATION. COVER SHEET
BCIDD-ROT-UTL_KP-0011_XX_00-DR-CU-0005	KIMMAGE TO CITY CENTRE CORE BUS CORRIDOR SCHEME. GNI ASSET ALTERNATION. KEY PLAN
BCIDD-ROT-UTL_UG-0011_XX_00-DR-CU-0001 to 0014	KIMMAGE TO CITY CENTRE CORE BUS CORRIDOR SCHEME. GNI ASSET ALTERNATION. DRAWINGS.

\\wddubp1u20191917117117-02\_WIP08 MODELS01 CAD01 DWG03 STG 3 - STATUTORY PROCESS (M)01 PLANNING11 KIMMAGECOVER SHEETSBCIDD-ROT-UTL\_IX-0011\_XX\_00-DR-CU-0005.dwg

**Disclaimer**

a. © National Transport Authority (NTA) 2022. This drawing is confidential and the copyright in it is owned by NTA. This drawing must not be either loaned, copied or otherwise reproduced in whole or in part or used for any purpose without the prior permission of NTA.

b. This drawing is to be used for the design element identified in the titleblock. Other information shown is to be considered indicative only. The drawing is to be read in conjunction with all other relevant design drawings.

c. O.S. data used for plans are printed under © Ordnance Survey Ireland Government of Ireland. All rights reserved. Licence Number 2022/OSI\_NMA\_180 National Transport Authority. All elevations are in metres and relate to OSI Geoid Model (OSGM15) Mean Head. All Co-ordinates are in Irish Transverse Mercator Grid (ITM) as defined by OSI active local GPS station.

d. Information concerning the position of apparatus shown on this drawing is based on drawings supplied by the utility owners and/or the utility works contractor, whilst every care has been taken in the preparation of this drawing, positions should be taken as approximate and are intended for general guidance only and no representation is made by the NTA as to the accuracy, completeness, sufficiency or otherwise of this drawing and the position of the apparatus. The information contained herein does not purport to be comprehensive or final as the apparatus is subject to being altered and/or superceded. Recipients should not rely on this information. Any liabilities are hereby expressly disclaimed.

e. The information contained herein has been provided by the NTA but does not purport to be comprehensive or final. Recipients should not rely on the information. Neither the NTA nor any of its directors, officers, employees, agents, stakeholders or advisers make any representation or warranty as to, or accept any liability or responsibility in relation to, the adequacy, accuracy, reasonableness or completeness of the information provided as part of this document or any matter on which the information is based (including but not limited to loss or damage arising as a result of reliance by recipients on the information or any part of it). Any liabilities are hereby expressly disclaimed.

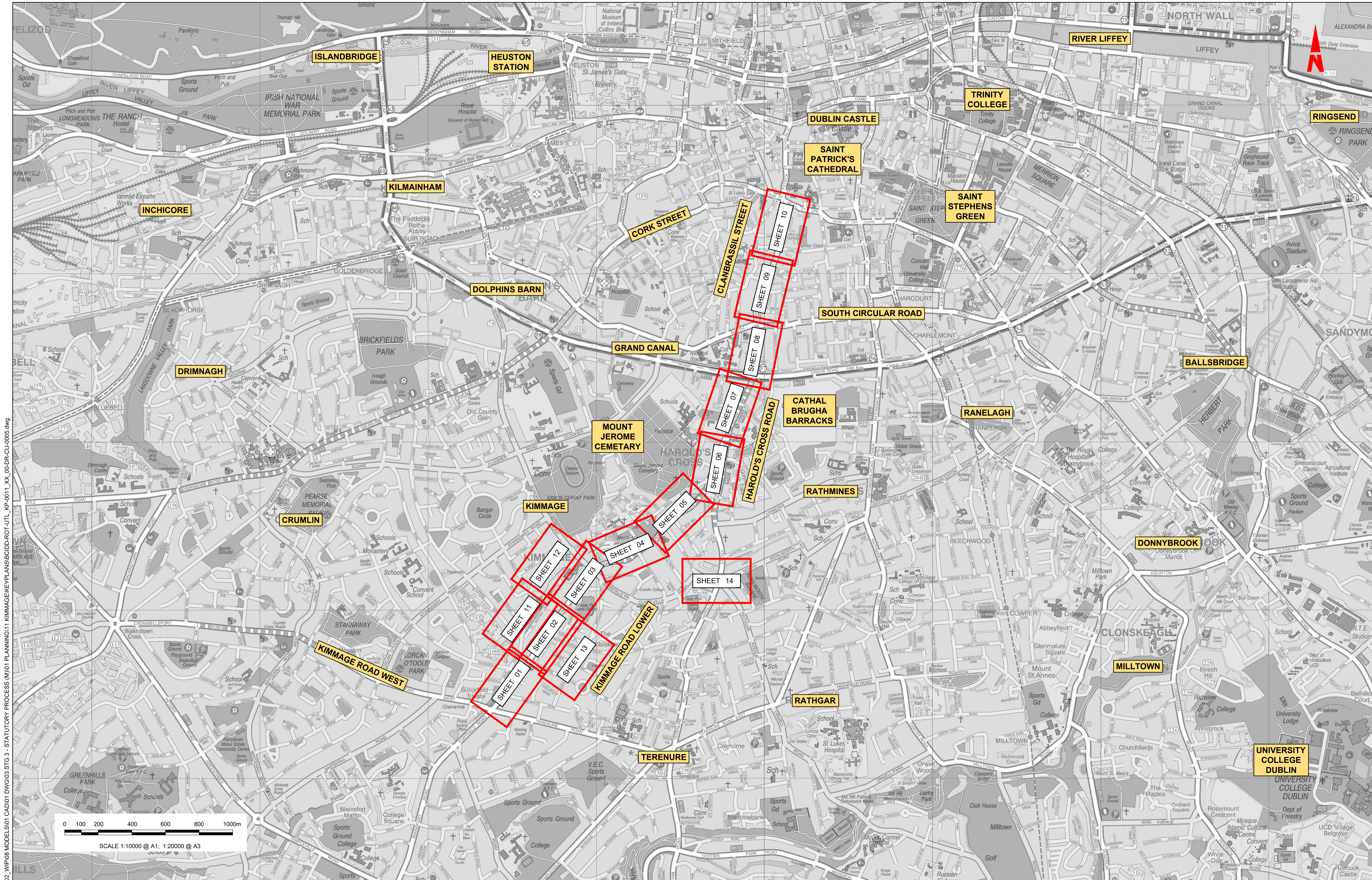


Rev	Date	Drm	Chk'd	App'd	Description
M01	FEB 2023	CG	SMG	SMG	ISSUE FOR PHASE 4: PLANNING

Client <b>NTA</b> Údarás Náisiúnta Iompair National Transport Authority		Engineering Designer <b>ROD</b> RUGHAN & O'DONOVAN TYPSA		
Date FEB 2023	Scale NTS @ A1 NTS @ A3	Drawn CG	Checked SMG	Approved SMG
Programme Code BCIDD	Originator Code ROT	QMS Code		

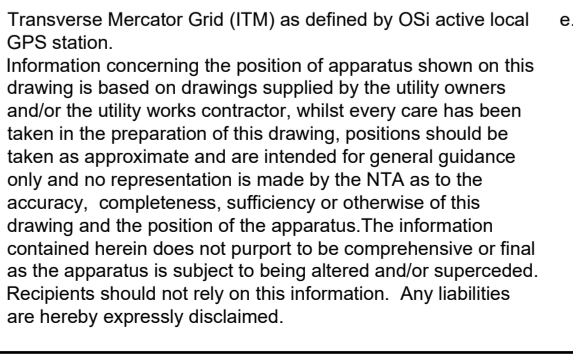
Programme Title <b>BUSCONNECTS DUBLIN CORE BUS CORRIDORS INFRASTRUCTURE WORKS</b>			
Drawing Title KIMMAGE TO CITY CENTRE CORE BUS CORRIDOR SCHEME GNI ASSET ALTERATIONS COVER SHEET			
Drawing File Name BCIDD-ROT-UTL_IX-0011_XX_00-DR-CU-0005	Sheet Number 05 of 0	Status A	Rev M01

DO NOT SCALE USE FIGURED DIMENSIONS ONLY



W:\000000\19117117-02\_WIP\08 MODELS\01 CAD\01 PLANNING\11 KIMMAGE\KEYPLANS\BCIDD-ROT-UTL\_KP-0011\_XX\_00-DR-CU-0005.dwg  
 Model Date: 2023/02/23 11:17:02

**Disclaimer**  
 a. © National Transport Authority (NTA) 2022. This drawing is confidential and the copyright in it is owned by NTA. This drawing must not be either loaned, copied or otherwise reproduced in whole or in part or used for any purpose without the prior permission of NTA.  
 b. This drawing is to be used for the design element identified in the titleblock. Other information shown is to be considered indicative only. The drawing is to be read in conjunction with all other relevant design drawings.  
 c. O.S. data used for plans are printed under © Ordnance Survey Ireland Government of Ireland. All rights reserved. Licence Number 2022/OSI\_NMA\_180 National Transport Authority. All elevations are in metres and relate to OSi Geoid Model (OSGM15) Mean Head. All Co-ordinates are in Irish Transverse Mercator Grid (ITM) as defined by OSi active local GPS station.  
 d. Information concerning the position of apparatus shown on this drawing is based on drawings supplied by the utility owners and/or the utility works contractor, whilst every care has been taken in the preparation of this drawing, positions should be as to, or accept any liability or responsibility in relation to, the adequacy, accuracy, reasonableness or completeness of the information provided as part of this document or any matter on which the information is based (including but not limited to loss or damage arising as a result of reliance by recipients on the information or any part of it). Any liabilities are hereby expressly disclaimed.



Rev	Date	Drn	Chk'd	App'd	Description
M01	FEB 2023	CG	SMG	SMC	ISSUE FOR PHASE 4: PLANNING

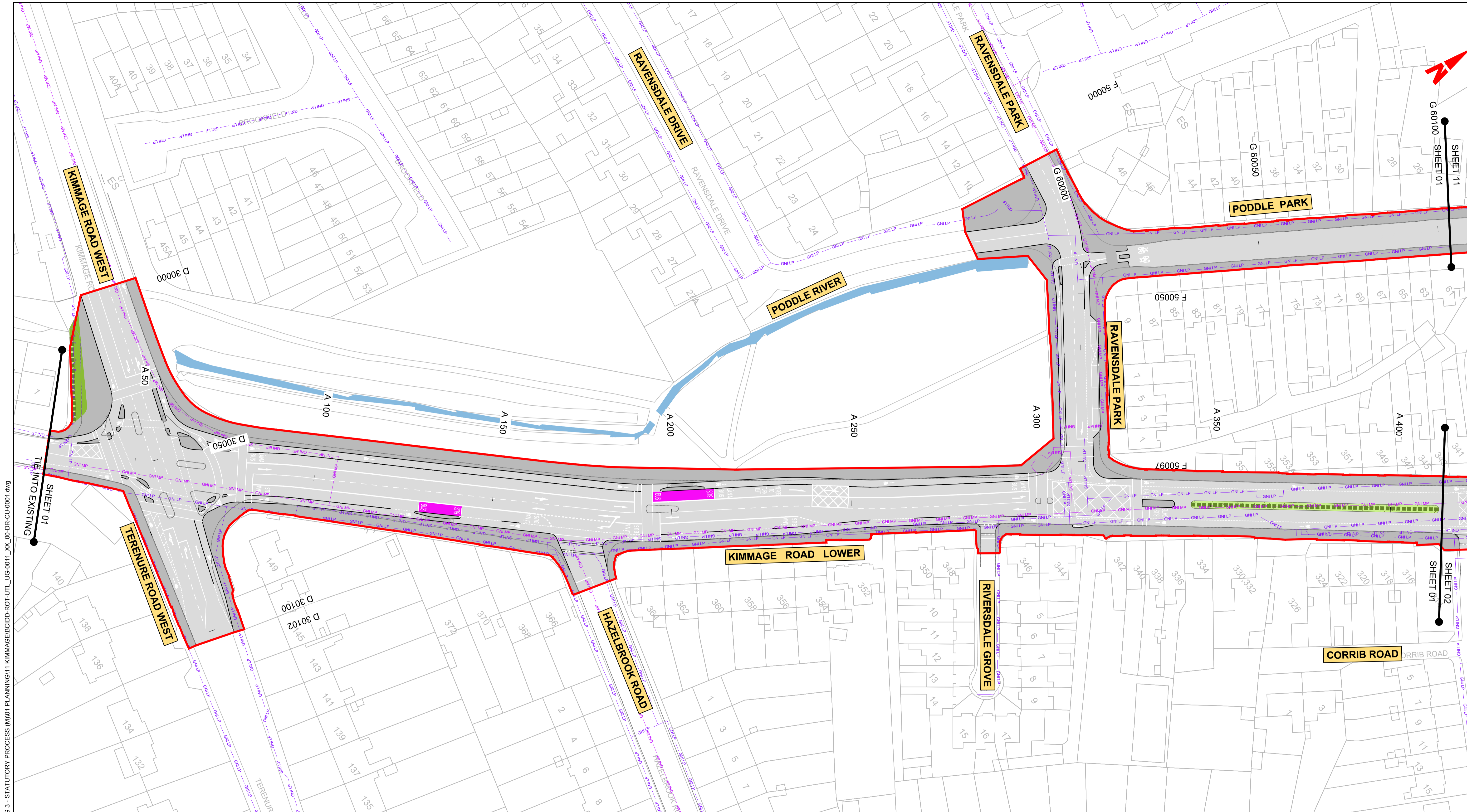
Client: **NTA**  
 Údarás Náisiúnta Iompair  
 National Transport Authority

Engineering Designer: **CIROD**  
 TYPSA

Date	Scale	Drawn	Checked	Approved
FEB 2023	Scale 1:10,000 @ A1 1:20,000 @ A3	CG	SMG	SMG

Programme Title	Drawing Title	Drawing File Name	Sheet Number	Status	Rev
<b>BUSCONNECTS DUBLIN CORE BUS CORRIDORS INFRASTRUCTURE WORKS</b>	KIMMAGE TO CITY CENTRE CORE BUS CORRIDOR SCHEME GNI ASSET ALTERATIONS KEYPLAN	BCIDD-ROT-UTL_KP-0011_XX_00-DR-CU-0005	05 of 01	A	M01

DO NOT SCALE USE FIGURED DIMENSIONS ONLY

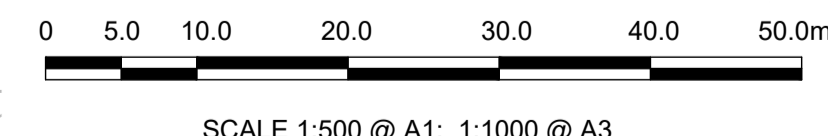


**LEGEND:**

	EXISTING KERB LINE		PROPOSED KERB LINE
	GAS NETWORKS IRELAND - EXISTING HIGH PRESSURE GAS NETWORK		GAS NETWORKS IRELAND - HIGH PRESSURE - PROPOSED UNDERGROUND DIVERSION
	GAS NETWORKS IRELAND - EXISTING MEDIUM PRESSURE GAS NETWORK		GAS NETWORKS IRELAND - MEDIUM PRESSURE - PROPOSED UNDERGROUND DIVERSION
	GAS NETWORKS IRELAND - EXISTING LOW PRESSURE GAS NETWORK		GAS NETWORKS IRELAND - LOW PRESSURE - PROPOSED UNDERGROUND DIVERSION
	SITE BOUNDARY LINE		TEMPORARY LAND ACQUISITION
	EXISTING NETWORK TO BE DECOMMISSIONED		

**NOTES:**

- UTILITY LOCATIONS ARE INDICATIVE ONLY AND BASED ON UTILITY PROVIDER RECORDS



**Disclaimer:**

a. © National Transport Authority (NTA) 2022. This drawing is confidential and the copyright in it is owned by NTA. This drawing must not be either loaned, copied or otherwise reproduced in whole or in part or used for any purpose without the prior permission of NTA.

b. This drawing is to be used for the design element identified in the titleblock. Other information shown is to be considered indicative only. The drawing is to be read in conjunction with all other relevant design drawings.

c. O.S. data used for plans are printed under © Ordnance Survey Ireland Government of Ireland. All rights reserved. Licence Number 2022/OSI\_NMA\_180 National Transport Authority. All elevations are in metres and relate to OSI Geoid Model (OSGM15) Mean Head. All Co-ordinates are in Irish Transverse Mercator Grid (ITM) as defined by OSI active local GPS station.

d. Information concerning the position of apparatus shown on this drawing is based on drawings supplied by the utility owners and/or the utility works contractor, whilst every care has been taken as to the accuracy, completeness, sufficiency or otherwise of this drawing and the position of the apparatus. The information contained herein does not purport to be comprehensive or final as the apparatus is subject to being altered and/or superceded. Recipients should not rely on this information. Any liabilities are hereby expressly disclaimed.

e. The information contained herein has been provided by the NTA but does not purport to be comprehensive or final. Recipients should not rely on the information. Neither the NTA nor any of its directors, officers, employees, agents, stakeholders or advisers make any representation or warranty as to, or accept any liability or responsibility in relation to, the adequacy, accuracy, reasonableness or completeness of the information provided as part of this document or any matter on which the information is based (including but not limited to loss or damage arising as a result of reliance by recipients on the information or any part of it). Any liabilities are hereby expressly disclaimed.



Rev	Date	Drn	Chk'd	App'd	Description
M01	FEB 2023	DS	EE	SMG	ISSUED FOR PHASE 4: PLANNING

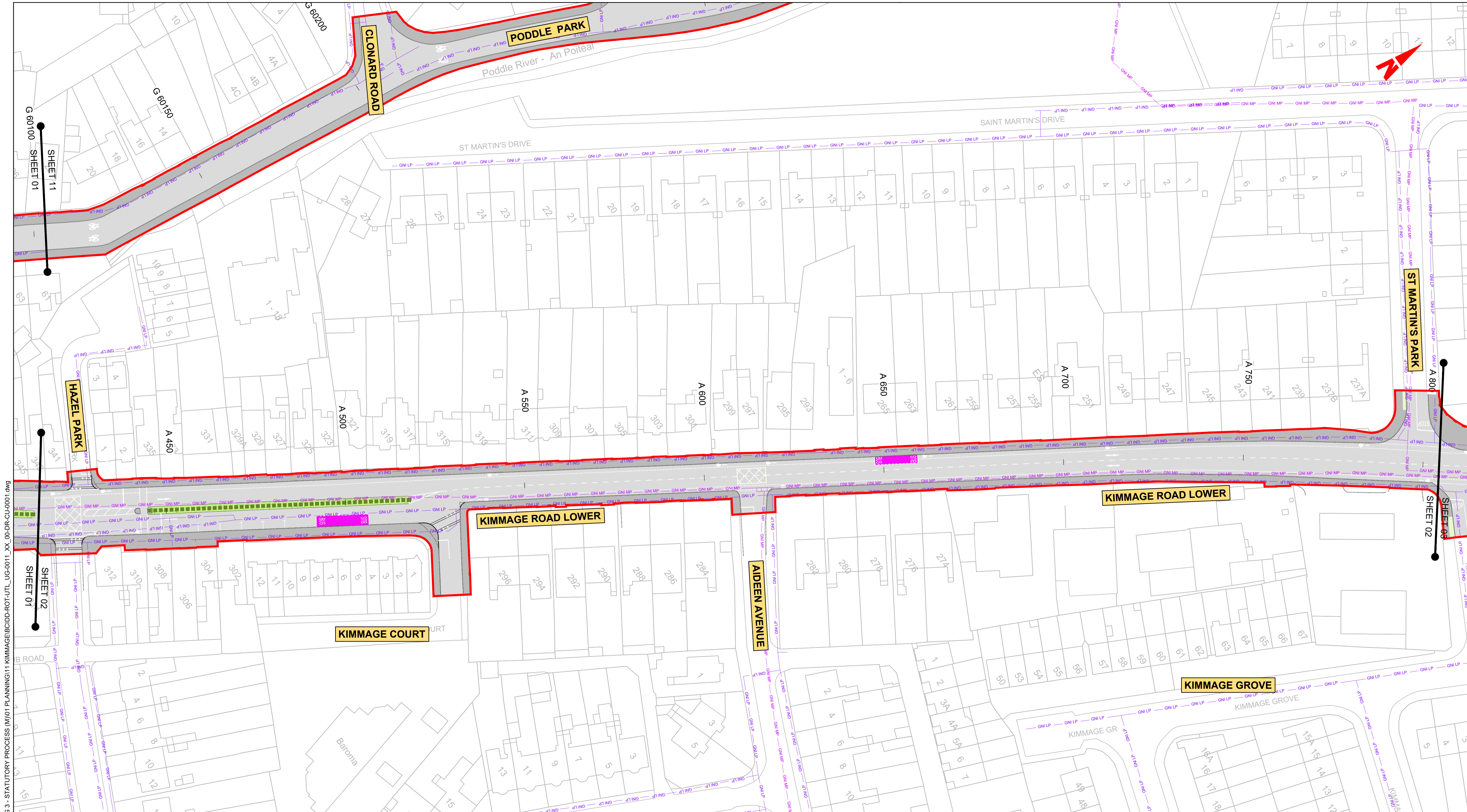
Client  
**NTA**  
 Údarás Náisiúnta Iompair  
 National Transport Authority

Engineering Designer		
Drawn	Checked	Approved
DS	EE	SMG

Programme Title			
<b>BUSCONNECTS DUBLIN</b>			
<b>CORE BUS CORRIDORS INFRASTRUCTURE WORKS</b>			
Drawing Title			
KIMMAGE TO CITY CENTRE CORE BUS CORRIDOR SCHEME			
GNI ASSET ALTERATIONS			
Drawing File Name	Sheet Number	Status	Rev
BCIDD-ROT-UTL_UG-0011_XX_00-DR-CU-0001	01 of 14	A	M01

DO NOT SCALE USE FIGURED DIMENSIONS ONLY

\\produbp1\UJ2019\1917119117-02\_WIP\08 MODELS\01 CAD\01 PLANNING\11 KIMMAGE\BCIDD-ROT-UTL\_UG-0011\_XX\_00-DR-CU-0001.dwg

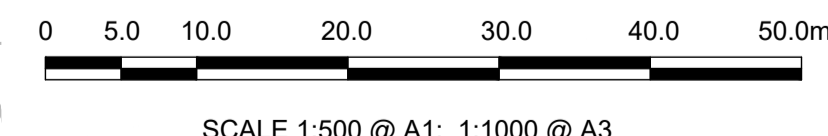


**LEGEND:**

	EXISTING KERB LINE		PROPOSED KERB LINE
	GAS NETWORKS IRELAND - EXISTING HIGH PRESSURE GAS NETWORK		GAS NETWORKS IRELAND - HIGH PRESSURE - PROPOSED UNDERGROUND DIVERSION
	GAS NETWORKS IRELAND - EXISTING MEDIUM PRESSURE GAS NETWORK		GAS NETWORKS IRELAND - MEDIUM PRESSURE - PROPOSED UNDERGROUND DIVERSION
	GAS NETWORKS IRELAND - EXISTING LOW PRESSURE GAS NETWORK		GAS NETWORKS IRELAND - LOW PRESSURE - PROPOSED UNDERGROUND DIVERSION
	SITE BOUNDARY LINE		TEMPORARY LAND ACQUISITION
	EXISTING NETWORK TO BE DECOMMISSIONED		

**NOTES:**

- UTILITY LOCATIONS ARE INDICATIVE ONLY AND BASED ON UTILITY PROVIDER RECORDS



**Disclaimer**

a. © National Transport Authority (NTA) 2022. This drawing is confidential and the copyright in it is owned by NTA. This drawing must not be either loaned, copied or otherwise reproduced in whole or in part or used for any purpose without the prior permission of NTA.

b. This drawing is to be used for the design element identified in the titlebox. Other information shown is to be considered indicative only. The drawing is to be read in conjunction with all other relevant design drawings.

c. O.S. data used for plans are printed under © Ordnance Survey Ireland Government of Ireland. All rights reserved. Licence Number 2022/OSI\_NMA\_180 National Transport Authority. All elevations are in metres and relate to OSI Geoid Model (OSGM15) Mean Head. All Co-ordinates are in Irish Transverse Mercator Grid (ITM) as defined by OSI active local GPS station.

d. Information concerning the position of apparatus shown on this drawing is based on drawings supplied by the utility owners and/or the utility works contractor, whilst every care has been taken in the preparation of this drawing, positions should be taken as approximate and are intended for general guidance only and no representation is made by the NTA as to the accuracy, completeness, sufficiency or otherwise of this drawing and the position of the apparatus. The information contained herein does not purport to be comprehensive or final as the apparatus is subject to being altered and/or superceded. Recipients should not rely on this information. Any liabilities are hereby expressly disclaimed.

e. The information contained herein has been provided by the NTA but does not purport to be comprehensive or final. Recipients should not rely on the information. Neither the NTA nor any of its directors, officers, employees, agents, stakeholders or advisers make any representation or warranty as to, or accept any liability or responsibility in relation to, the adequacy, accuracy, reasonableness or completeness of the information provided as part of this document or any matter on which the information is based (including but not limited to loss or damage arising as a result of reliance by recipients on the information or any part of it). Any liabilities are hereby expressly disclaimed.



Rev	Date	Drn	Chk'd	App'd	Description
M01	FEB 2023	DS	EE	SMG	ISSUED FOR PHASE 4: PLANNING

Client  
**NTA**  
 Údarás Náisiúnta Iompair  
 National Transport Authority

Engineering Designer

Drawn DS	Checked EE
Approved SMG	

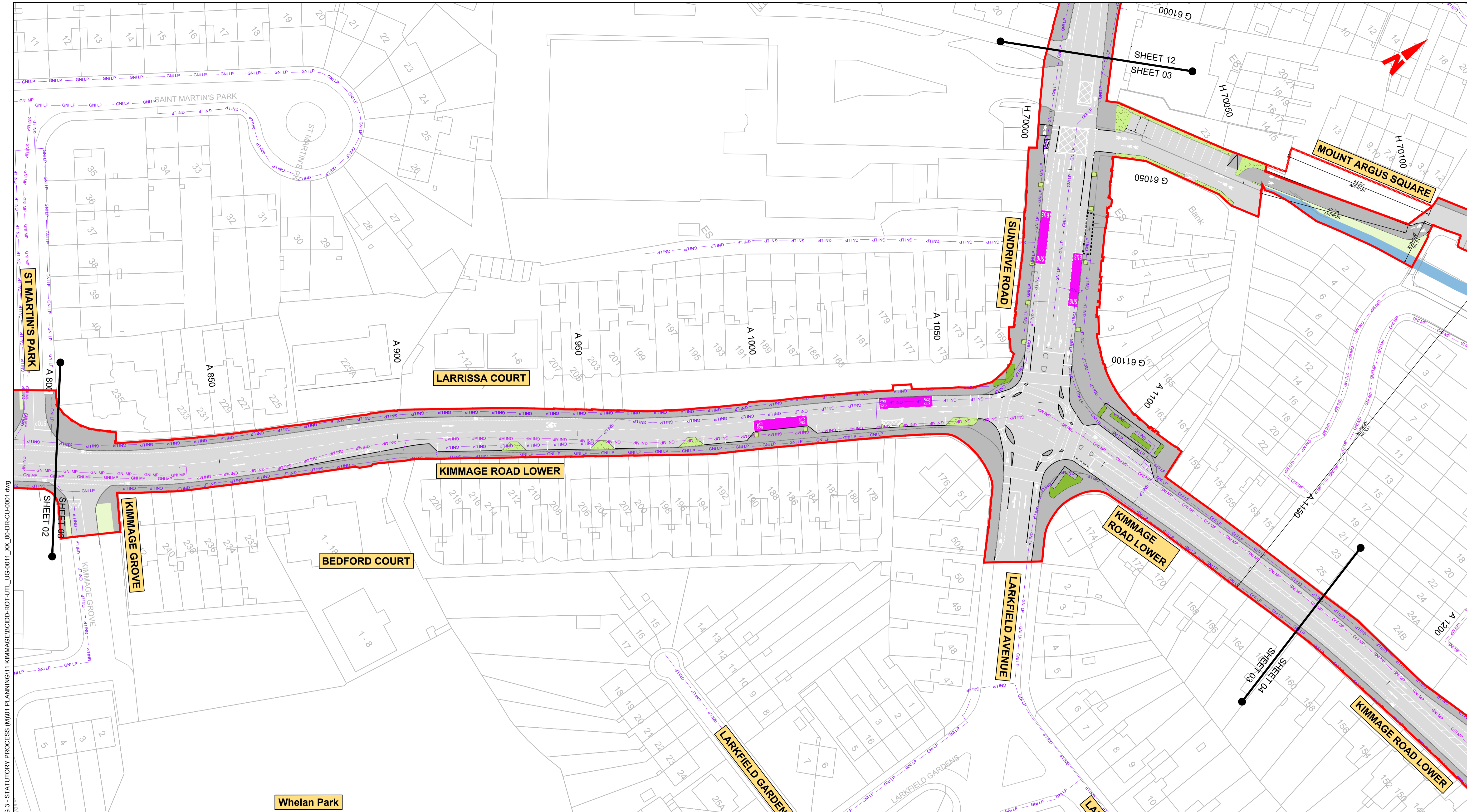
Programme Title  
**BUSCONNECTS DUBLIN  
 CORE BUS CORRIDORS INFRASTRUCTURE WORKS**

Drawing Title  
 KIMMAGE TO CITY CENTRE CORE BUS CORRIDOR SCHEME  
 GNI ASSET ALTERATIONS

Drawing File Name BCIDD-ROT-UTL_UG-0011_XX_00-DR-CU-0002	Sheet Number 02 of 14	Status A	Rev M01
---	--------------------------	-------------	------------

DO NOT SCALE USE FIGURED DIMENSIONS ONLY

\\nodubp1\U201919\1718117-02\_WIP08 MODELS\01 CAD\01 PLANNING\11 KIMMAGE\BCIDD-ROT-UTL\_UG-0011\_XX\_00-DR-CU-0001.dwg

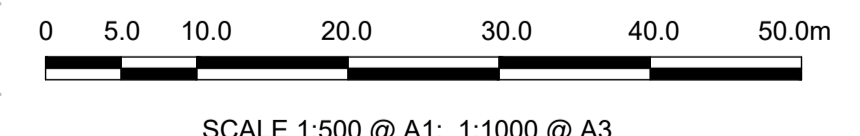


**LEGEND:**

---	EXISTING KERB LINE	---	PROPOSED KERB LINE
---	GAS NETWORKS IRELAND - EXISTING HIGH PRESSURE GAS NETWORK	---	GAS NETWORKS IRELAND - HIGH PRESSURE - PROPOSED UNDERGROUND DIVERSION
---	GAS NETWORKS IRELAND - EXISTING MEDIUM PRESSURE GAS NETWORK	---	GAS NETWORKS IRELAND - MEDIUM PRESSURE - PROPOSED UNDERGROUND DIVERSION
---	GAS NETWORKS IRELAND - EXISTING LOW PRESSURE GAS NETWORK	---	GAS NETWORKS IRELAND - LOW PRESSURE - PROPOSED UNDERGROUND DIVERSION
---	SITE BOUNDARY LINE	---	TEMPORARY LAND ACQUISITION
---	EXISTING NETWORK TO BE DECOMMISSIONED		

**NOTES:**

- UTILITY LOCATIONS ARE INDICATIVE ONLY AND BASED ON UTILITY PROVIDER RECORDS



**Disclaimer:**

a. © National Transport Authority (NTA) 2022. This drawing is confidential and the copyright in it is owned by NTA. This drawing must not be either loaned, copied or otherwise reproduced in whole or in part or used for any purpose without the prior permission of NTA.

b. This drawing is to be used for the design element identified in the title block. Other information shown is to be considered indicative only. The drawing is to be read in conjunction with all other relevant design drawings.

c. O.S. data used for plans are printed under © Ordnance Survey Ireland Government of Ireland. All rights reserved. Licence Number 2022/OSI\_NMA\_180 National Transport Authority. All elevations are in metres and relate to OSI Geoid Model (OSGM15) Mean Head. All Co-ordinates are in Irish Transverse Mercator Grid (ITM) as defined by OSI active local GPS station.

d. Information concerning the position of apparatus shown on this drawing is based on drawings supplied by the utility owners and/or the utility works contractor, whilst every care has been taken in the preparation of this drawing, positions should be taken as approximate and are intended for general guidance only and no representation is made by the NTA as to the accuracy, completeness, sufficiency or otherwise of this drawing and the position of the apparatus. The information contained herein does not purport to be comprehensive or final as the apparatus is subject to being altered and/or superceded. Recipients should not rely on this information. Any liabilities are hereby expressly disclaimed.

e. The information contained herein has been provided by the NTA but does not purport to be comprehensive or final. Recipients should not rely on the information. Neither the NTA nor any of its directors, officers, employees, agents, stakeholders or advisers make any representation or warranty as to, or accept any liability or responsibility in relation to, the adequacy, accuracy, reasonableness or completeness of the information provided as part of this document or any matter on which the information is based (including but not limited to loss or damage arising as a result of reliance by recipients on the information or any part of it). Any liabilities are hereby expressly disclaimed.



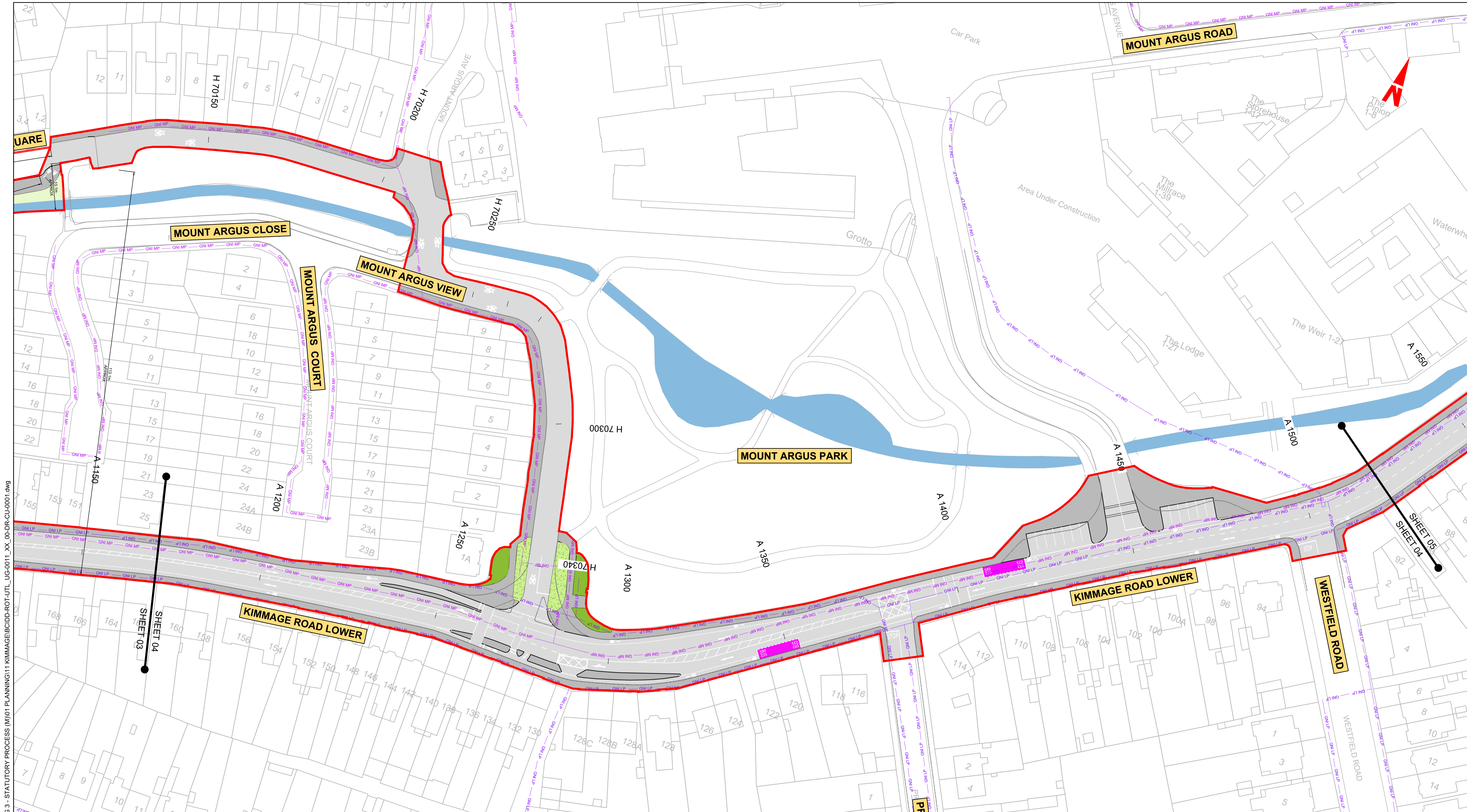
Rev	Date	Drn	Chk'd	App'd	Description
M01	FEB 2023	DS	EE	SMG	ISSUED FOR PHASE 4: PLANNING

Client <b>NTA</b> Udarás Náisiúnta Iompair National Transport Authority		Engineering Designer <b>TIROD</b> TYPSA		
Date FEB 2023	Scale 1:500 @ A1 1:1000 @ A3	Drawn DS	Checked EE	Approved SMG
Programme Code BCIDD	Originator Code ROT	QMS Code		

Programme Title <b>BUSCONNECTS DUBLIN CORE BUS CORRIDORS INFRASTRUCTURE WORKS</b>				
Drawing Title KIMMAGE TO CITY CENTRE CORE BUS CORRIDOR SCHEME GNI ASSET ALTERATIONS				
Drawing File Name BCIDD-ROT-UTL_UG-0011_XX_00-DR-CU-0003	Sheet Number 03 of 14	Status A	Rev M01	

DO NOT SCALE USE FIGURED DIMENSIONS ONLY

\\wddp\p1\j20191917119117-02\_WIP008 MODELS\01 CAD\01 DWG\03 STG 3 - STATUTORY PROCESS (M)\01 PLANNING\11 KIMMAGE\BCIDD-ROT-UTL\_UG-0011\_XX\_00-DR-CU-0001.dwg



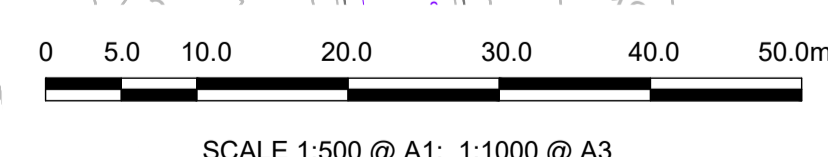
W:\projects\1917117-02\_WIP\08 MODELS\01 CAD\01 PLANNING\11 KIMMAGE\BCDD-ROT-UTL\_UG-0011\_XX\_00-DR-CU-0001.dwg  
 19/01/2023 11:17:02

**LEGEND:**

	EXISTING KERB LINE		PROPOSED KERB LINE
	GAS NETWORKS IRELAND - EXISTING HIGH PRESSURE GAS NETWORK		GAS NETWORKS IRELAND - HIGH PRESSURE - PROPOSED UNDERGROUND DIVERSION
	GAS NETWORKS IRELAND - EXISTING MEDIUM PRESSURE GAS NETWORK		GAS NETWORKS IRELAND - MEDIUM PRESSURE - PROPOSED UNDERGROUND DIVERSION
	GAS NETWORKS IRELAND - EXISTING LOW PRESSURE GAS NETWORK		GAS NETWORKS IRELAND - LOW PRESSURE - PROPOSED UNDERGROUND DIVERSION
	SITE BOUNDARY LINE		TEMPORARY LAND ACQUISITION
	EXISTING NETWORK TO BE DECOMMISSIONED		

**NOTES:**

- UTILITY LOCATIONS ARE INDICATIVE ONLY AND BASED ON UTILITY PROVIDER RECORDS



**Disclaimer:**

a. © National Transport Authority (NTA) 2022. This drawing is confidential and the copyright in it is owned by NTA. This drawing must not be either loaned, copied or otherwise reproduced in whole or in part or used for any purpose without the prior permission of NTA.

b. This drawing is to be used for the design element identified in the titleblock. Other information shown is to be considered indicative only. The drawing is to be read in conjunction with all other relevant design drawings.

c. O.S. data used for plans are printed under © Ordnance Survey Ireland Government of Ireland. All rights reserved. Licence Number 2022/OSI\_NMA\_180 National Transport Authority. All elevations are in metres and relate to OSI Geoid Model (OSGM15) Mean Head. All Co-ordinates are in Irish Transverse Mercator Grid (ITM) as defined by OSI active local GPS station.

d. Information concerning the position of apparatus shown on this drawing is based on drawings supplied by the utility owners and/or the utility works contractor, whilst every care has been taken in the preparation of this drawing, positions should be taken as approximate and are intended for general guidance only and no representation is made by the NTA as to the accuracy, completeness, sufficiency or otherwise of this drawing and the position of the apparatus. The information contained herein does not purport to be comprehensive or final as the apparatus is subject to being altered and/or superceded. Recipients should not rely on this information. Any liabilities are hereby expressly disclaimed.

e. The information contained herein has been provided by the NTA but does not purport to be comprehensive or final. Recipients should not rely on the information. Neither the NTA nor any of its directors, officers, employees, agents, stakeholders or advisers make any representation or warranty as to, or accept any liability or responsibility in relation to, the adequacy, accuracy, reasonableness or completeness of the information provided as part of this document or any matter on which the information is based (including but not limited to loss or damage arising as a result of reliance by recipients on the information or any part of it). Any liabilities are hereby expressly disclaimed.



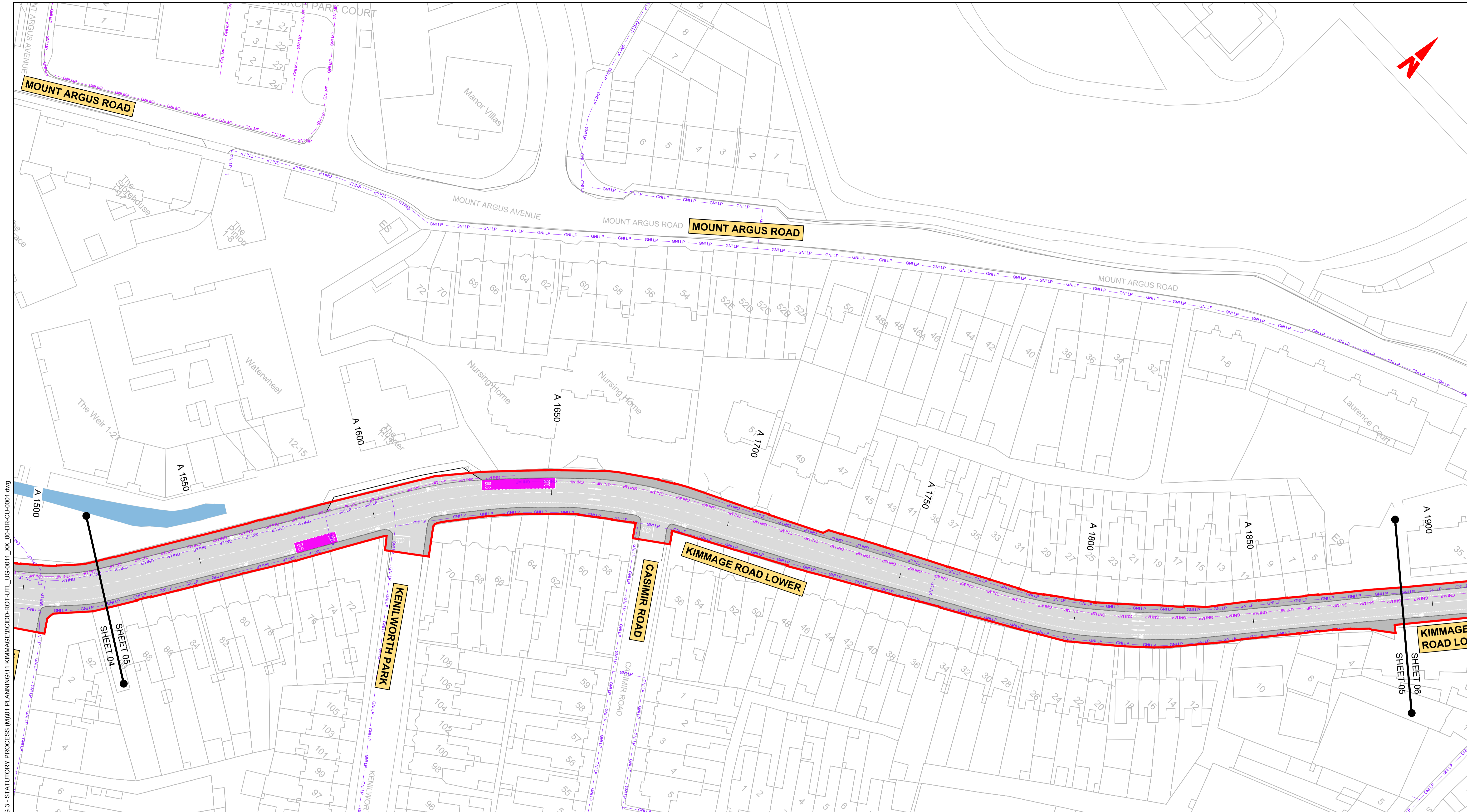
Rev	Date	Drn	Chk'd	App'd	Description
M01	FEB 2023	DS	EE	SMG	ISSUED FOR PHASE 4: PLANNING

Client  
**NTA**  
 Údarás Náisiúnta Iompair  
 National Transport Authority

Engineering Designer		
Drawn	Checked	Approved
DS	EE	SMG

Programme Title			
<b>BUSCONNECTS DUBLIN</b>			
<b>CORE BUS CORRIDORS INFRASTRUCTURE WORKS</b>			
Drawing Title			
KIMMAGE TO CITY CENTRE CORE BUS CORRIDOR SCHEME			
GNI ASSET ALTERATIONS			
Drawing File Name	Sheet Number	Status	Rev
BCIDD-ROT-UTL_UG-0011_XX_00-DR-CU-0004	04 of 14	A	M01

DO NOT SCALE USE FIGURED DIMENSIONS ONLY

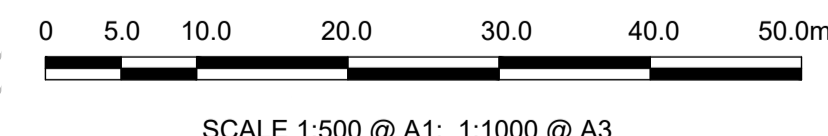


**LEGEND:**

	EXISTING KERB LINE		PROPOSED KERB LINE
	GAS NETWORKS IRELAND - EXISTING HIGH PRESSURE GAS NETWORK		GAS NETWORKS IRELAND - HIGH PRESSURE - PROPOSED UNDERGROUND DIVERSION
	GAS NETWORKS IRELAND - EXISTING MEDIUM PRESSURE GAS NETWORK		GAS NETWORKS IRELAND - MEDIUM PRESSURE - PROPOSED UNDERGROUND DIVERSION
	GAS NETWORKS IRELAND - EXISTING LOW PRESSURE GAS NETWORK		GAS NETWORKS IRELAND - LOW PRESSURE - PROPOSED UNDERGROUND DIVERSION
	SITE BOUNDARY LINE		TEMPORARY LAND ACQUISITION
	EXISTING NETWORK TO BE DECOMMISSIONED		

**NOTES:**

1. UTILITY LOCATIONS ARE INDICATIVE ONLY AND BASED ON UTILITY PROVIDER RECORDS



**Disclaimer**

a. © National Transport Authority (NTA) 2022. This drawing is confidential and the copyright in it is owned by NTA. This drawing must not be either loaned, copied or otherwise reproduced in whole or in part or used for any purpose without the prior permission of NTA.

b. This drawing is to be used for the design element identified in the titleblock. Other information shown is to be considered indicative only. The drawing is to be read in conjunction with all other relevant design drawings.

c. O.S. data used for plans are printed under © Ordnance Survey Ireland Government of Ireland. All rights reserved. Licence Number 2022/OSI\_NMA\_180 National Transport Authority. All elevations are in metres and relate to OSI Geoid Model (OSGM15) Mean Head. All co-ordinates are in Irish Transverse Mercator Grid (ITM) as defined by OSI active local GPS station.

d. Information concerning the position of apparatus shown on this drawing is based on drawings supplied by the utility owners and/or the utility works contractor, whilst every care has been taken in the preparation of this drawing, positions should be taken as approximate and are intended for general guidance only and no representation is made by the NTA as to the accuracy, completeness, sufficiency or otherwise of this drawing and the position of the apparatus. The information contained herein does not purport to be comprehensive or final as the apparatus is subject to being altered and/or superceded. Recipients should not rely on this information. Any liabilities are hereby expressly disclaimed.

e. The information contained herein has been provided by the NTA but does not purport to be comprehensive or final. Recipients should not rely on the information. Neither the NTA nor any of its directors, officers, employees, agents, stakeholders or advisers make any representation or warranty as to, or accept any liability or responsibility in relation to, the adequacy, accuracy, reasonableness or completeness of the information provided as part of this document or any matter on which the information is based (including but not limited to loss or damage arising as a result of reliance by recipients on the information or any part of it). Any liabilities are hereby expressly disclaimed.



Rev	Date	Drn	Chk'd	App'd	Description
M01	FEB 2023	DS	EE	SMG	ISSUED FOR PHASE 4: PLANNING

Client  
**NTA**  
 Údarás Náisiúnta Iompair  
 National Transport Authority

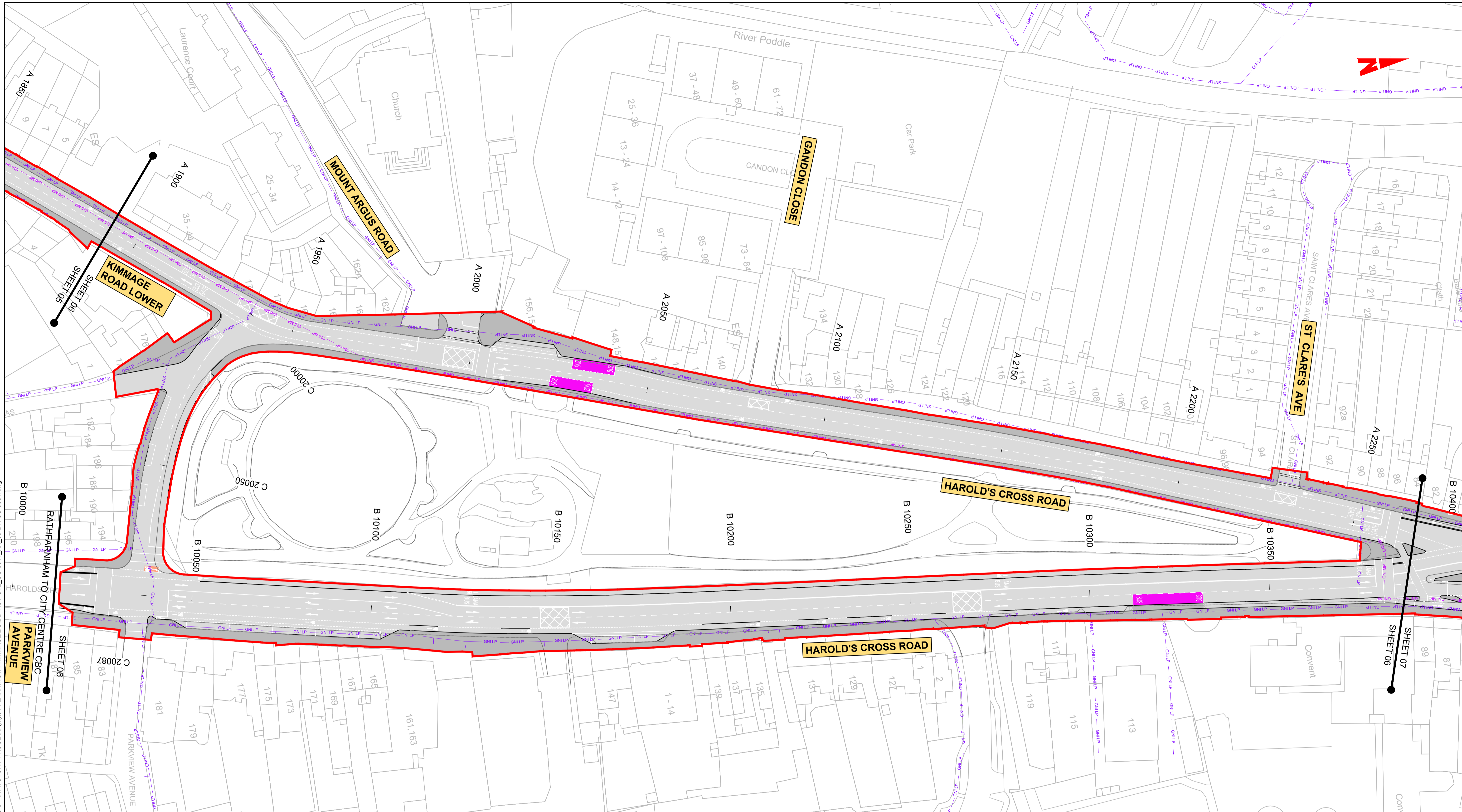
Engineering Designer		
Drawn	Checked	Approved
DS	EE	SMG

Programme Title			
<b>BUSCONNECTS DUBLIN</b>			
<b>CORE BUS CORRIDORS INFRASTRUCTURE WORKS</b>			
Drawing Title			
KIMMAGE TO CITY CENTRE CORE BUS CORRIDOR SCHEME			
GNI ASSET ALTERATIONS			
Drawing File Name		Sheet Number	Status
BCIDD-ROT-UTL_UG-0011_XX_00-DR-CU-0005		05 of 14	A
Programme Code		Originator Code	QMS Code
BCIDD		ROT	
Date	Scale	Drawn	Checked
FEB 2023	1:500 @ A1 1:1000 @ A3	DS	EE
Programme Code	Originator Code	QMS Code	Approved
BCIDD	ROT		SMG
Rev	Date	Status	Rev
M01		A	M01

DO NOT SCALE USE FIGURED DIMENSIONS ONLY

\\produbp1\j\2019\19117-02\_WIP\08 MODELS\01 CAD\01 PLANNING\11 KIMMAGE\BCIDD-ROT-UTL\_UG-0011\_XX\_00-DR-CU-0001.dwg



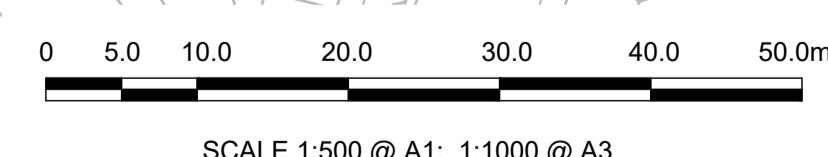


**LEGEND:**

- - - - - EXISTING KERB LINE
- - - - - PROPOSED KERB LINE
- GNI HP --- GNI HP --- GNI HP --- GNI HP --- GNI HP --- GAS NETWORKS IRELAND - EXISTING HIGH PRESSURE GAS NETWORK
- GNI MP --- GNI MP --- GNI MP --- GNI MP --- GNI MP --- GAS NETWORKS IRELAND - EXISTING MEDIUM PRESSURE GAS NETWORK
- GNI LP --- GNI LP --- GNI LP --- GNI LP --- GNI LP --- GAS NETWORKS IRELAND - EXISTING LOW PRESSURE GAS NETWORK
- GNI HP DV --- GNI HP DV --- GNI HP DV --- GNI HP DV --- GNI HP DV --- GAS NETWORKS IRELAND - HIGH PRESSURE - PROPOSED UNDERGROUND DIVERSION
- GNI MP DV --- GNI MP DV --- GNI MP DV --- GNI MP DV --- GNI MP DV --- GAS NETWORKS IRELAND - MEDIUM PRESSURE - PROPOSED UNDERGROUND DIVERSION
- GNI LP DV --- GNI LP DV --- GNI LP DV --- GNI LP DV --- GNI LP DV --- GAS NETWORKS IRELAND - LOW PRESSURE - PROPOSED UNDERGROUND DIVERSION
- SITE BOUNDARY LINE
- EXISTING NETWORK TO BE DECOMMISSIONED
- TEMPORARY LAND ACQUISITION

**NOTES:**

- UTILITY LOCATIONS ARE INDICATIVE ONLY AND BASED ON UTILITY PROVIDER RECORDS



**Disclaimer**

a. © National Transport Authority (NTA) 2022. This drawing is confidential and the copyright in it is owned by NTA. This drawing must not be either loaned, copied or otherwise reproduced in whole or in part or used for any purpose without the prior permission of NTA.

b. This drawing is to be used for the design element identified in the title block. Other information shown is to be considered indicative only. The drawing is to be read in conjunction with all other relevant design drawings.

c. O.S. data used for plans are printed under © Ordnance Survey Ireland Government of Ireland. All rights reserved. Licence Number 2022/OSI\_NMA\_180 National Transport Authority. All elevations are in metres and relate to OSI Geoid Model (OSGM15) Mean Head. All Co-ordinates are in Irish Transverse Mercator Grid (ITM) as defined by OSI active local GPS station.

d. Information concerning the position of apparatus shown on this drawing is based on drawings supplied by the utility owners and/or the utility works contractor, whilst every care has been taken in the preparation of this drawing, positions should be taken as approximate and are intended for general guidance only and no representation is made by the NTA as to the accuracy, completeness, sufficiency or otherwise of this drawing and the position of the apparatus. The information contained herein does not purport to be comprehensive or final as the apparatus is subject to being altered and/or superseded. Recipients should not rely on this information. Any liabilities are hereby expressly disclaimed.

e. The information contained herein has been provided by the NTA but does not purport to be comprehensive or final. Recipients should not rely on the information. Neither the NTA nor any of its directors, officers, employees, agents, stakeholders or advisers make any representation or warranty as to, or accept any liability or responsibility in relation to, the adequacy, accuracy, reasonableness or completeness of the information provided as part of this document or any matter on which the information is based (including but not limited to loss or damage arising as a result of reliance by recipients on the information or any part of it). Any liabilities are hereby expressly disclaimed.



Rev	Date	Drn	Chk'd	App'd	Description
M01	FEB 2023	DS	EE	SMG	ISSUED FOR PHASE 4: PLANNING

Client

**NTA**  
Udarás Náisiúnta Iompair  
National Transport Authority

Date: FEB 2023  
Scale: 1:500 @ A1  
1:1000 @ A3

Engineering Designer

**PROD**  
TYPSA

Drawn	Checked	Approved
DS	EE	SMG

Programme Code: BCIDD  
Originator Code: ROT  
QMS Code:

Programme Title <b>BUSCONNECTS DUBLIN CORE BUS CORRIDORS INFRASTRUCTURE WORKS</b>			
Drawing Title KIMMAGE TO CITY CENTRE CORE BUS CORRIDOR SCHEME GNI ASSET ALTERATIONS			
Drawing File Name BCIDD-ROT-UTL_UG-0011_XX_00-DR-CU-0006	Sheet Number 06 of 14	Status A	Rev M01

DO NOT SCALE USE FIGURED DIMENSIONS ONLY

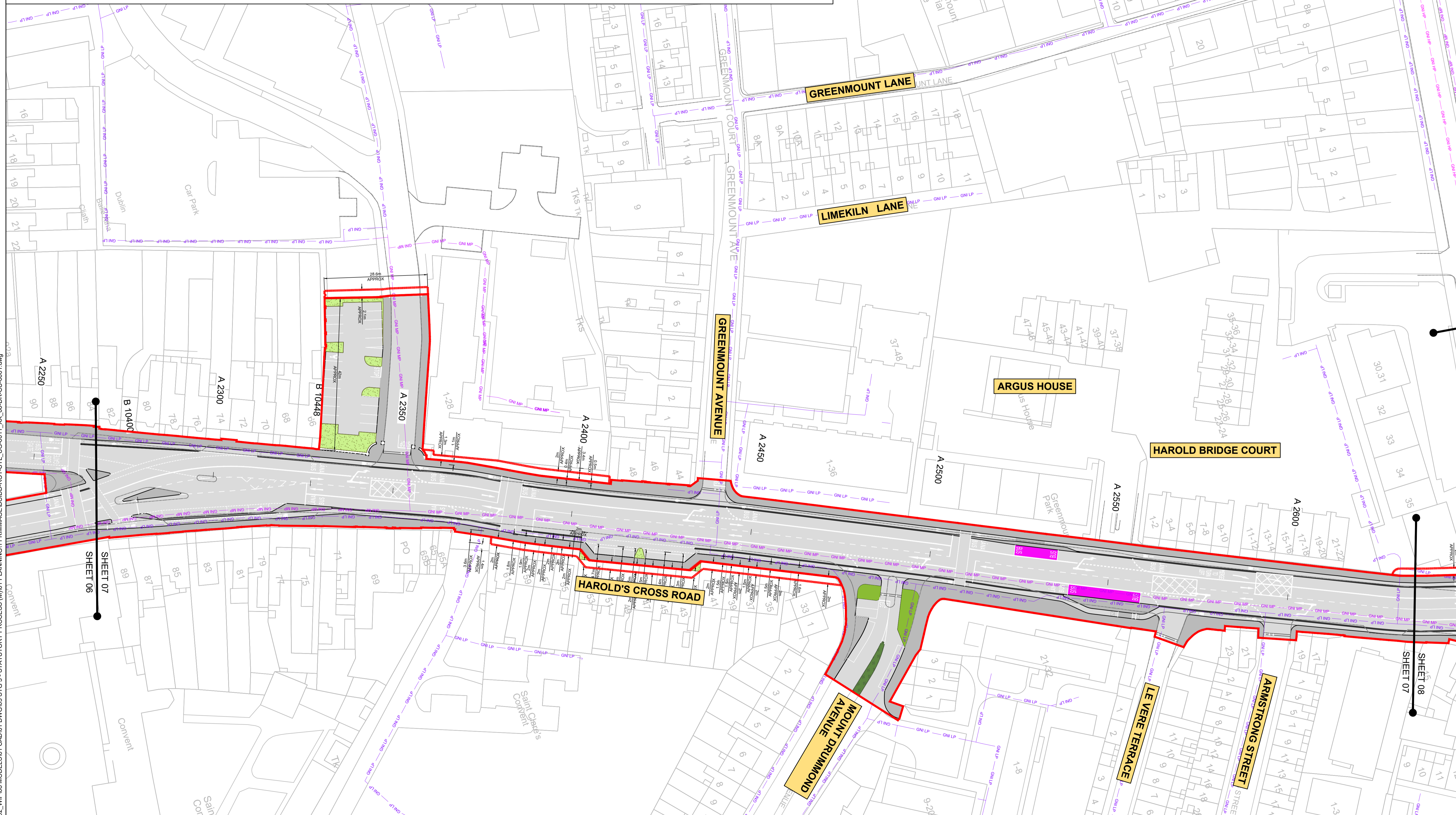
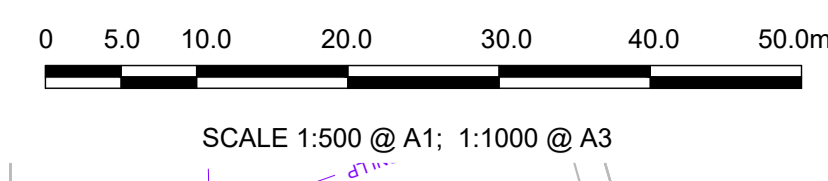
\\nodub\p\j\2019\1917\1917-02\_WIP\08 MODELS\01 CAD\01 PLANNING\11 KIMMAGE\BCIDD-ROT-UTL\_UG-0011\_XX\_00-DR-CU-0001.dwg

**LEGEND:**

	EXISTING KERB LINE		PROPOSED KERB LINE
	GAS NETWORKS IRELAND - EXISTING HIGH PRESSURE GAS NETWORK		GAS NETWORKS IRELAND - HIGH PRESSURE - PROPOSED UNDERGROUND DIVERSION
	GAS NETWORKS IRELAND - EXISTING MEDIUM PRESSURE GAS NETWORK		GAS NETWORKS IRELAND - MEDIUM PRESSURE - PROPOSED UNDERGROUND DIVERSION
	GAS NETWORKS IRELAND - EXISTING LOW PRESSURE GAS NETWORK		GAS NETWORKS IRELAND - LOW PRESSURE - PROPOSED UNDERGROUND DIVERSION
	SITE BOUNDARY LINE		TEMPORARY LAND ACQUISITION
	EXISTING NETWORK TO BE DECOMMISSIONED		

**NOTES:**

- UTILITY LOCATIONS ARE INDICATIVE ONLY AND BASED ON UTILITY PROVIDER RECORDS



W:\000000\19117-02\_WIP\08 MODELS\01 CAD\01 DWG\03 STG 3 - STATUTORY PROCESS (M)\01 PLANNING\11 KIMMAGE\BCDD-ROT-UTL\_UG-0011\_XX\_00-DR-CU-0001.dwg

**Disclaimer**

a. © National Transport Authority (NTA) 2022. This drawing is confidential and the copyright in it is owned by NTA. This drawing must not be either loaned, copied or otherwise reproduced in whole or in part or used for any purpose without the prior permission of NTA.

b. This drawing is to be used for the design element identified in the titlebox. Other information shown is to be considered indicative only. The drawing is to be read in conjunction with all other relevant design drawings.

c. O.S. data used for plans are printed under © Ordnance Survey Ireland Government of Ireland. All rights reserved. Licence Number 2022/OSI\_NMA\_180 National Transport Authority. All elevations are in metres and relate to OSI Geoid Model (OSGM15) Mean Head. All Co-ordinates are in Irish Transverse Mercator Grid (ITM) as defined by OSI active local GPS station.

d. Information concerning the position of apparatus shown on this drawing is based on drawings supplied by the utility owners and/or the utility works contractor, whilst every care has been taken in the preparation of this drawing, positions should be taken as approximate and are intended for general guidance only and no representation is made by the NTA as to the accuracy, completeness, sufficiency or otherwise of this drawing and the position of the apparatus. The information contained herein does not purport to be comprehensive or final as the apparatus is subject to being altered and/or superceded. Recipients should not rely on this information. Any liabilities are hereby expressly disclaimed.

e. The information contained herein has been provided by the NTA but does not purport to be comprehensive or final. Recipients should not rely on the information. Neither the NTA nor any of its directors, officers, employees, agents, stakeholders or advisers make any representation or warranty as to, or accept any liability or responsibility in relation to, the adequacy, accuracy, reasonableness or completeness of the information provided as part of this document or any matter on which the information is based (including but not limited to loss or damage arising as a result of reliance by recipients on the information or any part of it). Any liabilities are hereby expressly disclaimed.



Rev	Date	Drn	Chk'd	App'd	Description
M01	FEB 2023	DS	EE	SMG	ISSUED FOR PHASE 4: PLANNING

Client: **NTA**  
Údarás Náisiúnta Iompair  
National Transport Authority

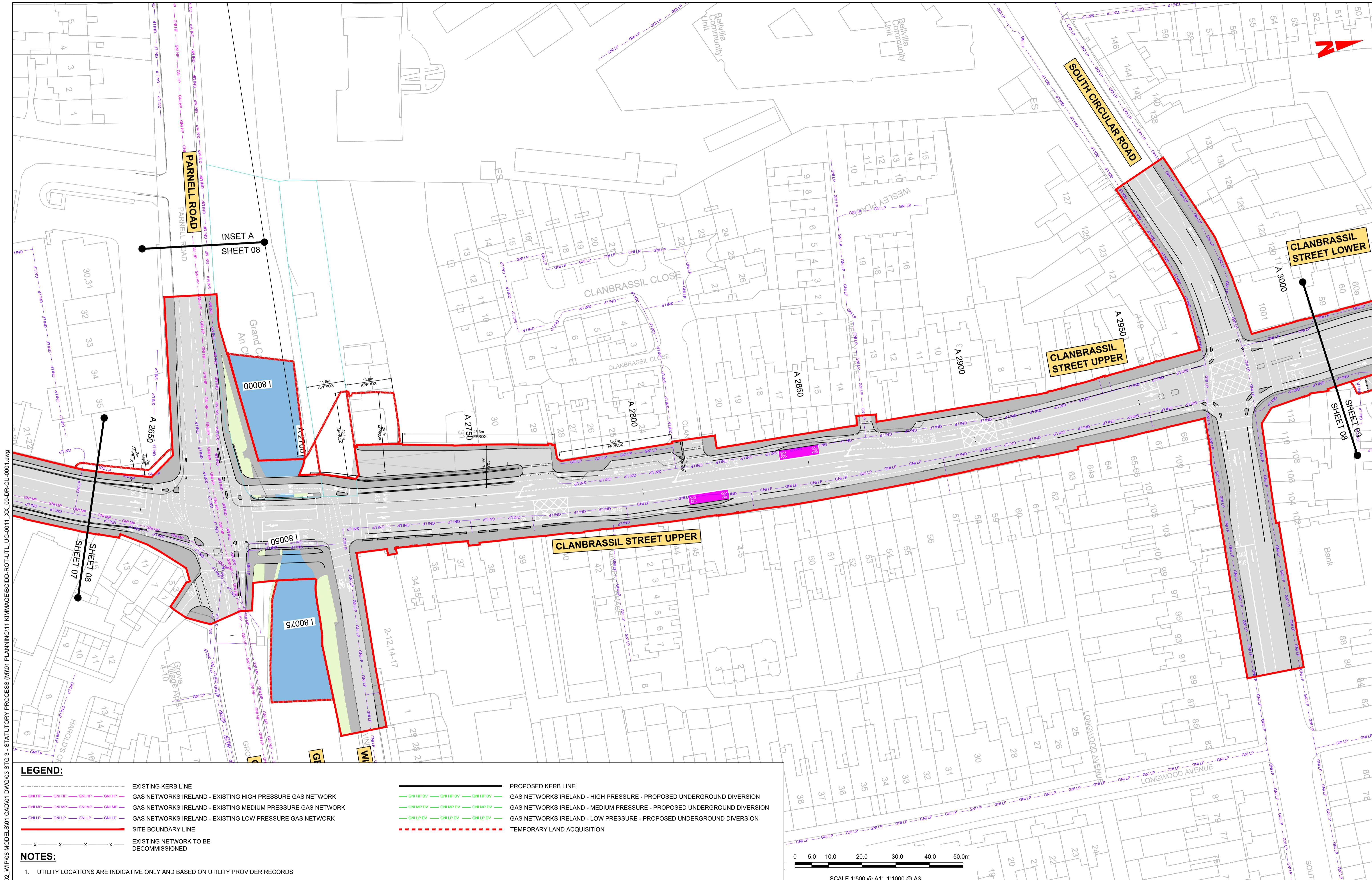
Engineering Designer: **PROD**  
TYPSA

Date: FEB 2023 | Scale: 1:500 @ A1, 1:1000 @ A3 | Drawn: DS | Checked: EE | Approved: SMG

Programme Code: BCIDD | Originator Code: ROT | QMS Code:

Programme Title: <b>BUSCONNECTS DUBLIN CORE BUS CORRIDORS INFRASTRUCTURE WORKS</b>			
Drawing Title: <b>KIMMAGE TO CITY CENTRE CORE BUS CORRIDOR SCHEME GNI ASSET ALTERATIONS</b>			
Drawing File Name: BCIDD-ROT-UTL_UG-0011_XX_00-DR-CU-0007	Sheet Number: 07 of 14	Status: A	Rev: M01

DO NOT SCALE USE FIGURED DIMENSIONS ONLY

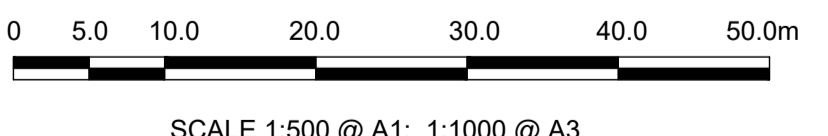


**LEGEND:**

- EXISTING KERB LINE
- PROPOSED KERB LINE
- GAS NETWORKS IRELAND - EXISTING HIGH PRESSURE GAS NETWORK
- GAS NETWORKS IRELAND - HIGH PRESSURE - PROPOSED UNDERGROUND DIVERSION
- GAS NETWORKS IRELAND - EXISTING MEDIUM PRESSURE GAS NETWORK
- GAS NETWORKS IRELAND - MEDIUM PRESSURE - PROPOSED UNDERGROUND DIVERSION
- GAS NETWORKS IRELAND - EXISTING LOW PRESSURE GAS NETWORK
- GAS NETWORKS IRELAND - LOW PRESSURE - PROPOSED UNDERGROUND DIVERSION
- SITE BOUNDARY LINE
- TEMPORARY LAND ACQUISITION
- EXISTING NETWORK TO BE DECOMMISSIONED

**NOTES:**

1. UTILITY LOCATIONS ARE INDICATIVE ONLY AND BASED ON UTILITY PROVIDER RECORDS



**Disclaimer**

a. © National Transport Authority (NTA) 2022. This drawing is confidential and the copyright in it is owned by NTA. This drawing must not be either loaned, copied or otherwise reproduced in whole or in part or used for any purpose without the prior permission of NTA.

b. This drawing is to be used for the design element identified in the titleblock. Other information shown is to be considered indicative only. The drawing is to be read in conjunction with all other relevant design drawings.

c. O.S. data used for plans are printed under © Ordnance Survey Ireland Government of Ireland. All rights reserved. Licence Number 2022/OSI\_NMA\_180 National Transport Authority. All elevations are in metres and relate to OSI Geoid Model (OSGM15) Mean Head. All Co-ordinates are in Irish Transverse Mercator Grid (ITM) as defined by OSI active local GPS station.

d. Information concerning the position of apparatus shown on this drawing is based on drawings supplied by the utility owners and/or the utility works contractor, whilst every care has been taken in the preparation of this drawing, positions should be taken as approximate and are intended for general guidance only and no representation is made by the NTA as to the accuracy, completeness, sufficiency or otherwise of this information. The information contained herein does not purport to be comprehensive or final as the apparatus is subject to being altered and/or superceded. Recipients should not rely on this information. Any liabilities are hereby expressly disclaimed.

e. The information contained herein has been provided by the NTA but does not purport to be comprehensive or final. Recipients should not rely on the information. Neither the NTA nor any of its directors, officers, employees, agents, stakeholders or advisers make any representation or warranty as to, or accept any liability or responsibility in relation to, the adequacy, accuracy, reasonableness or completeness of the information provided as part of this document or any matter on which the information is based (including but not limited to loss or damage arising as a result of reliance by recipients on the information or any part of it). Any liabilities are hereby expressly disclaimed.



Rev	Date	Drn	Chk'd	App'd	Description
M01	FEB 2023	DS	EE	SMG	ISSUED FOR PHASE 4: PLANNING

**Client**  
**NTA**  
 Údarás Náisiúnta Iompair  
 National Transport Authority

**Engineering Designer**  
**PROD**  
 TYPSA

Date: FEB 2023  
 Scale: 1:500 @ A1, 1:1000 @ A3  
 Programme Code: BCIDD  
 Originator Code: ROT

Drawn: DS  
 Checked: EE  
 Approved: SMG

<b>Programme Title</b> BUSCONNECTS DUBLIN CORE BUS CORRIDORS INFRASTRUCTURE WORKS			
<b>Drawing Title</b> KIMMAGE TO CITY CENTRE CORE BUS CORRIDOR SCHEME GNI ASSET ALTERATIONS			
<b>Drawing File Name</b> BCIDD-ROT-UTL_UG-0011_XX_00-DR-CU-0008	<b>Sheet Number</b> 08 of 14	<b>Status</b> A	<b>Rev</b> M01

DO NOT SCALE USE FIGURED DIMENSIONS ONLY

\\produbp1\j\2019\1911719117-02\_WIP\08 MODELS\01 CAD\01 PLANNING\11 KIMMAGE\BIDD-ROT-UTL\_UG-0011\_XX\_00-DR-CU-0001.dwg



**LEGEND:**

---	EXISTING KERB LINE	---	PROPOSED KERB LINE
---	GAS NETWORKS IRELAND - EXISTING HIGH PRESSURE GAS NETWORK	---	GAS NETWORKS IRELAND - HIGH PRESSURE - PROPOSED UNDERGROUND DIVERSION
---	GAS NETWORKS IRELAND - EXISTING MEDIUM PRESSURE GAS NETWORK	---	GAS NETWORKS IRELAND - MEDIUM PRESSURE - PROPOSED UNDERGROUND DIVERSION
---	GAS NETWORKS IRELAND - EXISTING LOW PRESSURE GAS NETWORK	---	GAS NETWORKS IRELAND - LOW PRESSURE - PROPOSED UNDERGROUND DIVERSION
---	SITE BOUNDARY LINE	---	TEMPORARY LAND ACQUISITION
---	EXISTING NETWORK TO BE DECOMMISSIONED		

**NOTES:**

- UTILITY LOCATIONS ARE INDICATIVE ONLY AND BASED ON UTILITY PROVIDER RECORDS

**Disclaimer:**

a. © National Transport Authority (NTA) 2022. This drawing is confidential and the copyright in it is owned by NTA. This drawing must not be either loaned, copied or otherwise reproduced in whole or in part or used for any purpose without the prior permission of NTA.

b. This drawing is to be used for the design element identified in the titleblock. Other information shown is to be considered indicative only. The drawing is to be read in conjunction with all other relevant design drawings.

c. OS data used for plans are printed under © Ordnance Survey Ireland Government of Ireland. All rights reserved. Licence Number 2022/OSI\_NMA\_180 National Transport Authority. All elevations are in metres and relate to OSI Geoid Model (OSGM15) Mean Head. All Co-ordinates are in Irish Transverse Mercator Grid (ITM) as defined by OSI active local GPS station.

d. Information concerning the position of apparatus shown on this drawing is based on drawings supplied by the utility owners, and/or the utility works contractor, whilst every care has been taken in the preparation of this drawing, positions should be taken as approximate and are intended for general guidance only and no representation is made by the NTA as to the accuracy, completeness, sufficiency or otherwise of this drawing and the position of the apparatus. The information contained herein does not purport to be comprehensive or final as the apparatus is subject to being altered and/or superseded. Recipients should not rely on this information. Any liabilities are hereby expressly disclaimed.

e. The information contained herein has been provided by the NTA but does not purport to be comprehensive or final. Recipients should not rely on the information. Neither the NTA nor any of its directors, officers, employees, agents, stakeholders or advisers make any representation or warranty as to, or accept any liability or responsibility in relation to, the adequacy, accuracy, reasonableness or completeness of the information provided as part of this document or any matter on which the information is based (including but not limited to loss or damage arising as a result of reliance by recipients on the information or any part of it). Any liabilities are hereby expressly disclaimed.



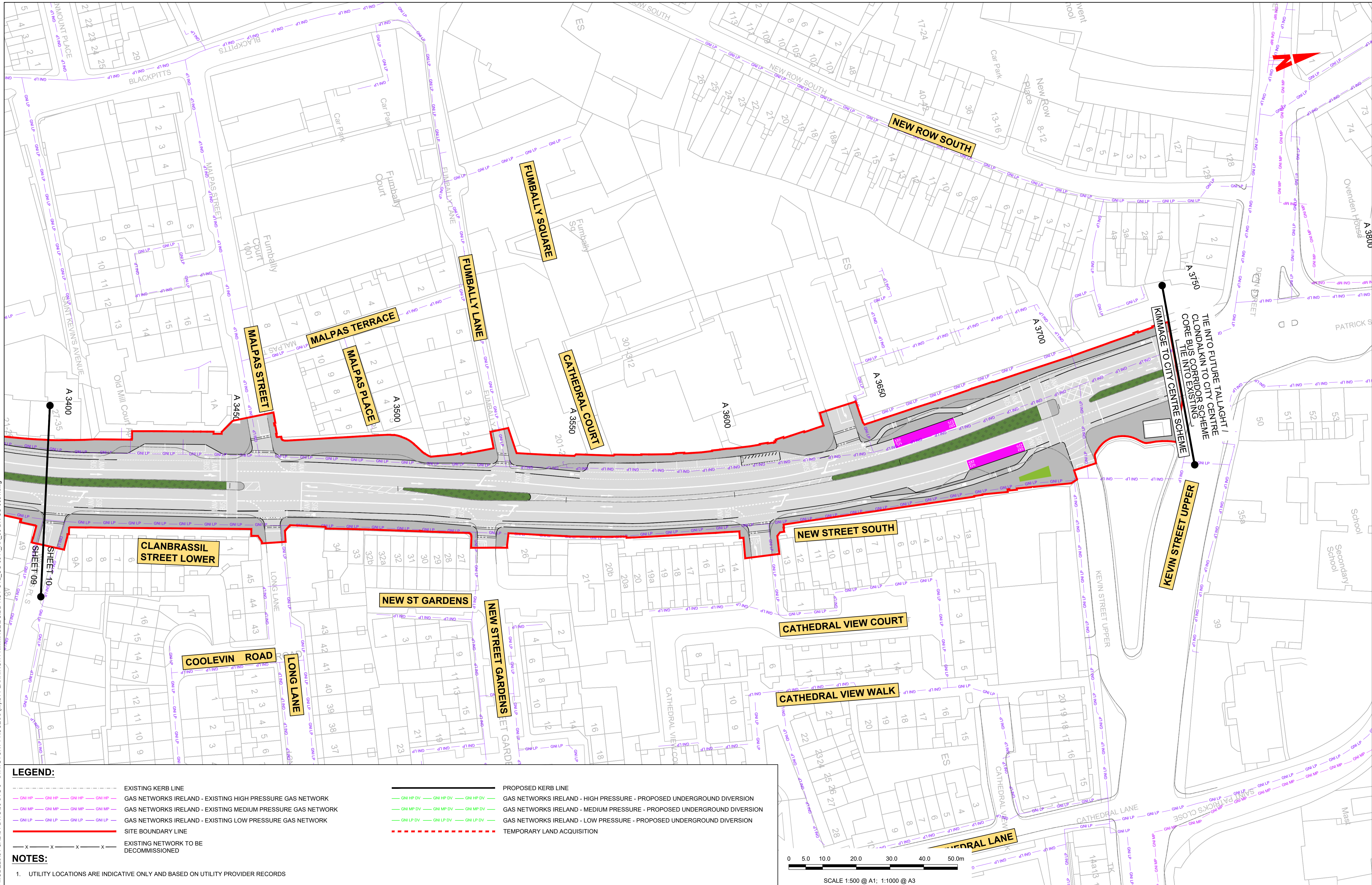
Rev	Date	Drn	Chk'd	App'd	Description
M01	FEB 2023	DS	EE	SMG	ISSUED FOR PHASE 4: PLANNING

Client		Engineering Designer	
 Údarás Náisiúnta Iompair National Transport Authority		 IROD TYPSA	
Date	Scale	Drawn	Checked
FEB 2023	1:500 @ A1 1:1000 @ A3	DS	EE
Approved	SMG	Programme Code	Originator Code
BCIDD	ROT	QMS Code	

Programme Title			
BUSCONNECTS DUBLIN CORE BUS CORRIDORS INFRASTRUCTURE WORKS			
Drawing Title			
KIMMAGE TO CITY CENTRE CORE BUS CORRIDOR SCHEME GNI ASSET ALTERATIONS			
Drawing File Name	Sheet Number	Status	Rev
BCIDD-ROT-UTL_UG-0011_XX_00-DR-CU-0009	09 of 14	A	M01

DO NOT SCALE USE FIGURED DIMENSIONS ONLY

\\nod001p1\j2019\1911719117-02\_WIP\08 MODELS\01 CAD\01 PLANNING\11 KIMMAGE\BCIDD-ROT-UTL\_UG-0011\_XX\_00-DR-CU-0001.dwg

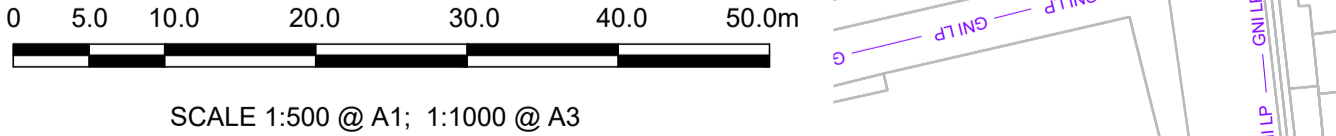


**LEGEND:**

- EXISTING KERB LINE
- GAS NETWORKS IRELAND - EXISTING HIGH PRESSURE GAS NETWORK
- GAS NETWORKS IRELAND - EXISTING MEDIUM PRESSURE GAS NETWORK
- GAS NETWORKS IRELAND - EXISTING LOW PRESSURE GAS NETWORK
- SITE BOUNDARY LINE
- EXISTING NETWORK TO BE DECOMMISSIONED
- PROPOSED KERB LINE
- GAS NETWORKS IRELAND - HIGH PRESSURE - PROPOSED UNDERGROUND DIVERSION
- GAS NETWORKS IRELAND - MEDIUM PRESSURE - PROPOSED UNDERGROUND DIVERSION
- GAS NETWORKS IRELAND - LOW PRESSURE - PROPOSED UNDERGROUND DIVERSION
- TEMPORARY LAND ACQUISITION

**NOTES:**

- UTILITY LOCATIONS ARE INDICATIVE ONLY AND BASED ON UTILITY PROVIDER RECORDS



**Disclaimer**

a. © National Transport Authority (NTA) 2022. This drawing is confidential and the copyright in it is owned by NTA. This drawing must not be either loaned, copied or otherwise reproduced in whole or in part or used for any purpose without the prior permission of NTA.

b. This drawing is to be used for the design element identified in the title block. Other information shown is to be considered indicative only. The drawing is to be read in conjunction with all other relevant design drawings.

c. D.S. data used for plans are printed under © Ordnance Survey National Government of Ireland. All rights reserved. Licence Number 2022/OSI\_NMA\_180 National Transport Authority. All elevations are in metres and relate to OSI Geoid Model (OSGM15) Mean Head. All Co-ordinates are in Irish Transverse Mercator Grid (ITM) as defined by OSI active local GPS station.

d. Information concerning the position of apparatus shown on this drawing is based on drawings supplied by the utility owners and/or the utility works contractor, whilst every care has been taken in the preparation of this drawing, positions should be taken as approximate and are intended for general guidance only and no representation is made by the NTA as to the accuracy, completeness, sufficiency or otherwise of this drawing and the position of the apparatus. The information contained herein does not purport to be comprehensive or final as the apparatus is subject to being altered and/or superseded. Recipients should not rely on this information. Any liabilities are hereby expressly disclaimed.

e. The information contained herein has been provided by the NTA but does not purport to be comprehensive or final. Recipients should not rely on the information. Neither the NTA nor any of its directors, officers, employees, agents, stakeholders or advisers make any representation or warranty as to, or accept any liability or responsibility in relation to, the adequacy, accuracy, reasonableness or completeness of the information provided as part of this document or any matter on which the information is based (including but not limited to loss or damage arising as a result of reliance by recipients on the information or any part of it). Any liabilities are hereby expressly disclaimed.



Rev	Date	Drn	Chk'd	App'd	Description
M01	FEB 2023	DS	EE	EOC	ISSUED FOR PHASE 4: PLANNING

Client: **NTA**  
Údarás Náisiúnta Iompair  
National Transport Authority

Engineering Designer: **PROD**  
TYPSA

Date: FEB 2023 | Scale: 1:500 @ A1, 1:1000 @ A3

Programme Code: BCIDD | Originator Code: ROT

Drawn: DS | Checked: EE | Approved: EOC

QMS Code

Programme Title		Drawing Title	
<b>BUSCONNECTS DUBLIN</b>		KIMMAGE TO CITY CENTRE CORE BUS CORRIDOR SCHEME	
<b>CORE BUS CORRIDORS INFRASTRUCTURE WORKS</b>		GNI ASSET ALTERATIONS	
Drawing File Name	Sheet Number	Status	Rev
BCIDD-ROT-UTL_UG-0011_XX_00-DR-CU-0010	10 of 14	A	M01

DO NOT SCALE USE FIGURED DIMENSIONS ONLY

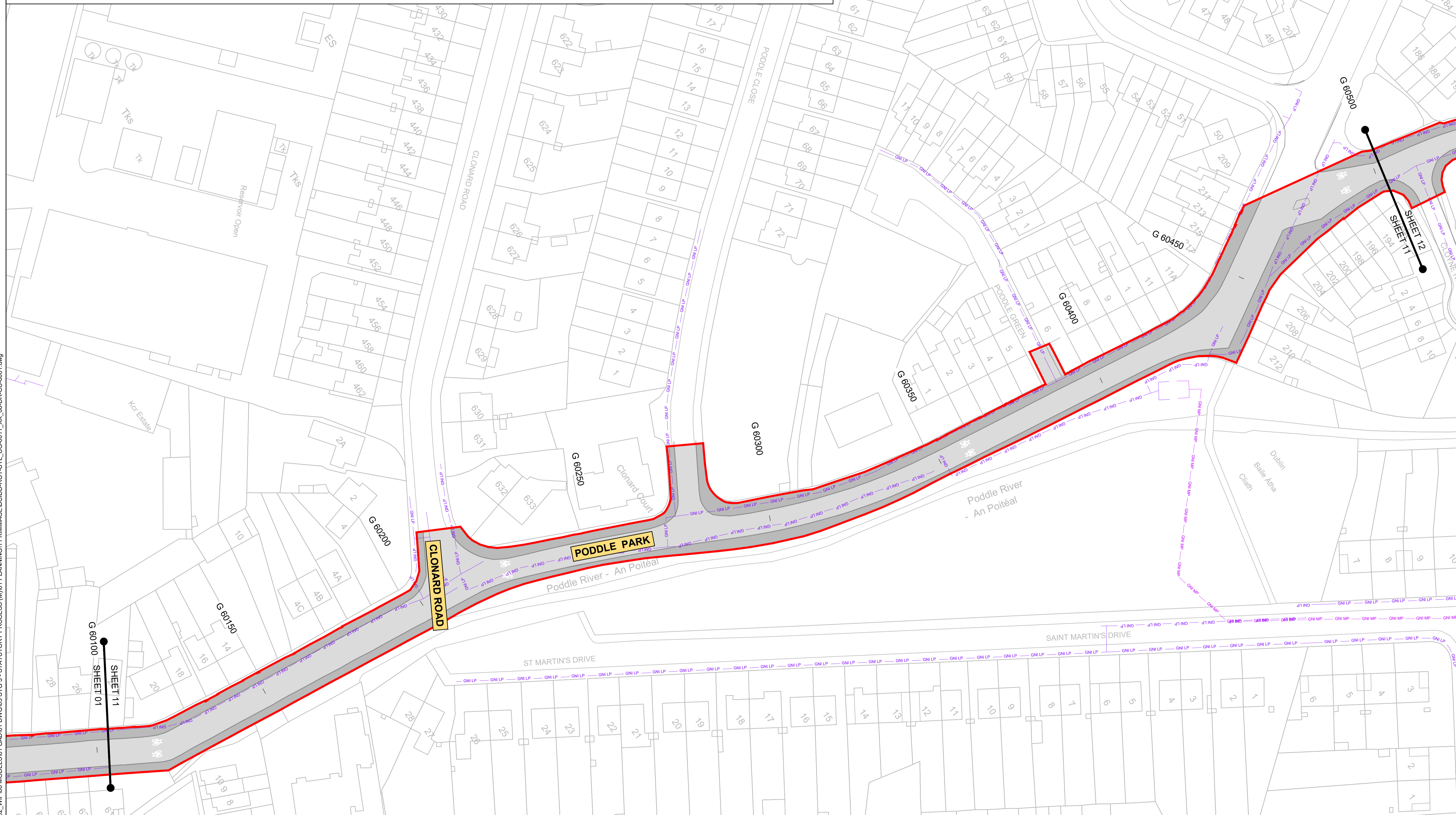
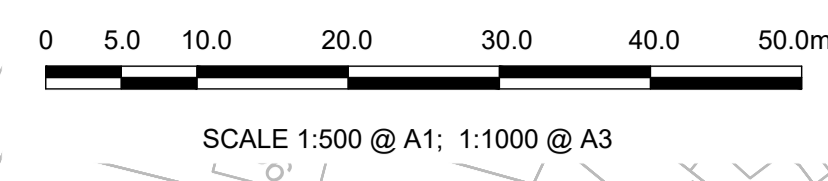
J:\2019\1911719117-02\_WIPO8 MODELS\01 CAD\01 PLANNING\11 KIMMAGE\BCIDD-ROT-UTL\_UG-0011\_XX\_00-DR-CU-0001.dwg

**LEGEND:**

--- EXISTING KERB LINE	--- PROPOSED KERB LINE
--- GAS NETWORKS IRELAND - EXISTING HIGH PRESSURE GAS NETWORK	--- GAS NETWORKS IRELAND - HIGH PRESSURE - PROPOSED UNDERGROUND DIVERSION
--- GAS NETWORKS IRELAND - EXISTING MEDIUM PRESSURE GAS NETWORK	--- GAS NETWORKS IRELAND - MEDIUM PRESSURE - PROPOSED UNDERGROUND DIVERSION
--- GAS NETWORKS IRELAND - EXISTING LOW PRESSURE GAS NETWORK	--- GAS NETWORKS IRELAND - LOW PRESSURE - PROPOSED UNDERGROUND DIVERSION
--- SITE BOUNDARY LINE	--- TEMPORARY LAND ACQUISITION
--- EXISTING NETWORK TO BE DECOMMISSIONED	

**NOTES:**

- UTILITY LOCATIONS ARE INDICATIVE ONLY AND BASED ON UTILITY PROVIDER RECORDS



W:\000000\191702\191702\_00-DR-CU-0001.dwg

**Disclaimer**

a. © National Transport Authority (NTA) 2022. This drawing is confidential and the copyright in it is owned by NTA. This drawing must not be either loaned, copied or otherwise reproduced in whole or in part or used for any purpose without the prior permission of NTA.

b. This drawing is to be used for the design element identified in the titleblock. Other information shown is to be considered indicative only. The drawing is to be read in conjunction with all other relevant design drawings.

c. O.S. data used for plans are printed under © Ordnance Survey Ireland Government of Ireland. All rights reserved. Licence Number 2022/OSI\_NMA\_180 National Transport Authority. All elevations are in metres and relate to OSI Geoid Model (OSGM15) Mean Head. All Co-ordinates are in Irish Transverse Mercator Grid (ITM) as defined by OSI active local GPS station.

d. Information concerning the position of apparatus shown on this drawing is based on drawings supplied by the utility owners and/or the utility works contractor, whilst every care has been taken in the preparation of this drawing, positions should be taken as approximate and are intended for general guidance only and no representation is made by the NTA as to the accuracy, completeness, sufficiency or otherwise of this information. The information contained herein does not purport to be comprehensive or final as the apparatus is subject to being altered and/or superceded. Recipients should not rely on this information. Any liabilities are hereby expressly disclaimed.

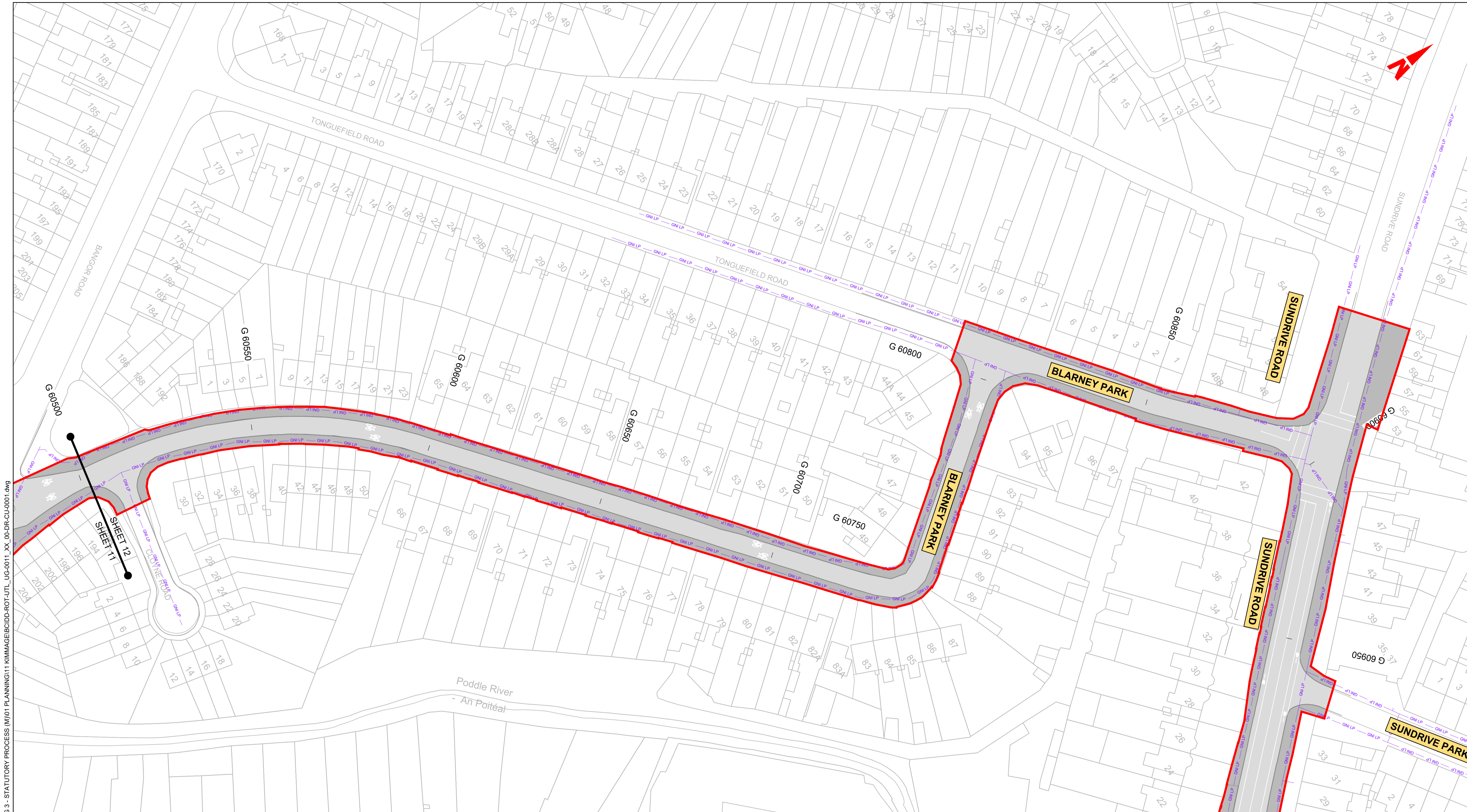
e. The information contained herein has been provided by the NTA but does not purport to be comprehensive or final. Recipients should not rely on the information. Neither the NTA nor any of its directors, officers, employees, agents, stakeholders or advisers make any representation or warranty as to, or accept any liability or responsibility in relation to, the adequacy, accuracy, reasonableness or completeness of the information provided as part of this document or any matter on which the information is based (including but not limited to loss or damage arising as a result of reliance by recipients on the information or any part of it). Any liabilities are hereby expressly disclaimed.

Rev	Date	Drn	Chk'd	App'd	Description
M01	FEB 2023	DS	EE	SMG	ISSUED FOR PHASE 4: PLANNING

<b>Client</b>  Údarás Náisiúnta Iompair National Transport Authority		<b>Engineering Designer</b>  I-ROD TYPSA		
Date	Scale	Drawn	Checked	Approved
FEB 2023	1:500 @ A1 1:1000 @ A3	DS	EE	SMG
Programme Code	Originator Code	QMS Code		
BCIDD	ROT			

<b>Programme Title</b> BUSCONNECTS DUBLIN CORE BUS CORRIDORS INFRASTRUCTURE WORKS			
<b>Drawing Title</b> KIMMAGE TO CITY CENTRE CORE BUS CORRIDOR SCHEME GNI ASSET ALTERATIONS			
Drawing File Name	Sheet Number	Status	Rev
BCIDD-ROT-UTL_UG-0011_XX_00-DR-CU-0011	11 of 14	A	M01

DO NOT SCALE USE FIGURED DIMENSIONS ONLY

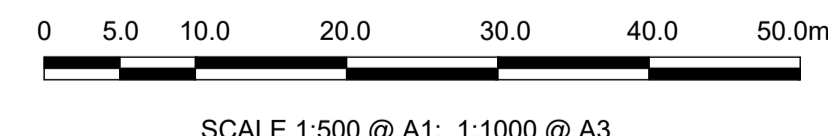


**LEGEND:**

	EXISTING KERB LINE		PROPOSED KERB LINE
	GAS NETWORKS IRELAND - EXISTING HIGH PRESSURE GAS NETWORK		GAS NETWORKS IRELAND - HIGH PRESSURE - PROPOSED UNDERGROUND DIVERSION
	GAS NETWORKS IRELAND - EXISTING MEDIUM PRESSURE GAS NETWORK		GAS NETWORKS IRELAND - MEDIUM PRESSURE - PROPOSED UNDERGROUND DIVERSION
	GAS NETWORKS IRELAND - EXISTING LOW PRESSURE GAS NETWORK		GAS NETWORKS IRELAND - LOW PRESSURE - PROPOSED UNDERGROUND DIVERSION
	SITE BOUNDARY LINE		TEMPORARY LAND ACQUISITION
	EXISTING NETWORK TO BE DECOMMISSIONED		

**NOTES:**

- UTILITY LOCATIONS ARE INDICATIVE ONLY AND BASED ON UTILITY PROVIDER RECORDS



**Disclaimer:**

a. © National Transport Authority (NTA) 2022. This drawing is confidential and the copyright in it is owned by NTA. This drawing must not be either loaned, copied or otherwise reproduced in whole or in part or used for any purpose without the prior permission of NTA.

b. This drawing is to be used for the design element identified in the title block. Other information shown is to be considered indicative only. The drawing is to be read in conjunction with all other relevant design drawings.

c. O.S. data used for plans are printed under © Ordnance Survey Ireland Government of Ireland. All rights reserved. Licence Number 2022/OSI\_NMA\_180 National Transport Authority. All elevations are in metres and relate to OSI Geoid Model (OSGM15) Malin Head. All Co-ordinates are in Irish Transverse Mercator Grid (ITM) as defined by OSI active local GPS station.

d. Information concerning the position of apparatus shown on this drawing is based on drawings supplied by the utility owners and/or the utility works contractor, whilst every care has been taken in the preparation of this drawing, positions should be taken as approximate and are intended for general guidance only and no representation is made by the NTA as to the accuracy, completeness, sufficiency or otherwise of this drawing and the position of the apparatus. The information contained herein does not purport to be comprehensive or final as the apparatus is subject to being altered and/or superceded. Recipients should not rely on this information. Any liabilities are hereby expressly disclaimed.

e. The information contained herein has been provided by the NTA but does not purport to be comprehensive or final. Recipients should not rely on the information. Neither the NTA nor any of its directors, officers, employees, agents, stakeholders or advisers make any representation or warranty as to, or accept any liability or responsibility in relation to, the adequacy, accuracy, reasonableness or completeness of the information provided as part of this document or any matter on which the information is based (including but not limited to loss or damage arising as a result of reliance by recipients on the information or any part of it). Any liabilities are hereby expressly disclaimed.



Rev	Date	Drn	Chk'd	App'd	Description
M01	FEB 2023	DS	EE	SMG	ISSUED FOR PHASE 4: PLANNING

Client

Date: FEB 2023  
 Scale: 1:500 @ A1, 1:1000 @ A3

Engineering Designer

Drawn: DS  
 Checked: EE  
 Approved: SMG

Programme Title <b>BUSCONNECTS DUBLIN CORE BUS CORRIDORS INFRASTRUCTURE WORKS</b>			
Drawing Title KIMMAGE TO CITY CENTRE CORE BUS CORRIDOR SCHEME GNI ASSET ALTERATIONS			
Drawing File Name BCIDD-ROT-UTL_UG-0011_XX_00-DR-CU-0012	Sheet Number 12 of 14	Status A	Rev M01

DO NOT SCALE USE FIGURED DIMENSIONS ONLY

W:\oddbp\JU2019\1917\17-02\_WIP\08 MODELS\01 CAD\01 PLANNING\11 KIMMAGE\BCIDD-ROT-UTL\_UG-0011\_XX\_00-DR-CU-0001.dwg

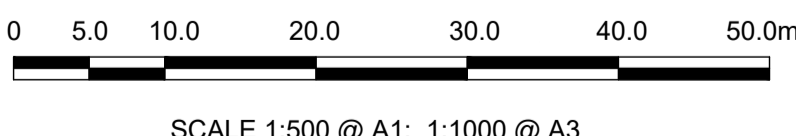


**LEGEND:**

	EXISTING KERB LINE		PROPOSED KERB LINE
	GAS NETWORKS IRELAND - EXISTING HIGH PRESSURE GAS NETWORK		GAS NETWORKS IRELAND - HIGH PRESSURE - PROPOSED UNDERGROUND DIVERSION
	GAS NETWORKS IRELAND - EXISTING MEDIUM PRESSURE GAS NETWORK		GAS NETWORKS IRELAND - MEDIUM PRESSURE - PROPOSED UNDERGROUND DIVERSION
	GAS NETWORKS IRELAND - EXISTING LOW PRESSURE GAS NETWORK		GAS NETWORKS IRELAND - LOW PRESSURE - PROPOSED UNDERGROUND DIVERSION
	SITE BOUNDARY LINE		TEMPORARY LAND ACQUISITION
	EXISTING NETWORK TO BE DECOMMISSIONED		

**NOTES:**

1. UTILITY LOCATIONS ARE INDICATIVE ONLY AND BASED ON UTILITY PROVIDER RECORDS



**Disclaimer**

a. © National Transport Authority (NTA) 2022. This drawing is confidential and the copyright in it is owned by NTA. This drawing must not be either loaned, copied or otherwise reproduced in whole or in part or used for any purpose without the prior permission of NTA.

b. This drawing is to be used for the design element identified in the titleblock. Other information shown is to be considered indicative only. The drawing is to be read in conjunction with all other relevant design drawings.

c. O.S. data used for plans are printed under © Ordnance Survey Ireland Government of Ireland. All rights reserved. Licence Number 2022/OSI\_NMA\_180 National Transport Authority. All elevations are in metres and relate to OSI Geoid Model (OSGM15) Mean Head. All Co-ordinates are in Irish Transverse Mercator Grid (ITM) as defined by OSI active local GPS station.

d. Information concerning the position of apparatus shown on this drawing is based on drawings supplied by the utility owners and/or the utility works contractor, whilst every care has been taken in the preparation of this drawing, positions should be taken as approximate and are intended for general guidance only and no representation is made by the NTA as to the accuracy, completeness, sufficiency or otherwise of this information. The information contained herein does not purport to be comprehensive or final as the apparatus is subject to being altered and/or superceded. Recipients should not rely on this information. Any liabilities are hereby expressly disclaimed.

e. The information contained herein has been provided by the NTA but does not purport to be comprehensive or final. Recipients should not rely on the information. Neither the NTA nor any of its directors, officers, employees, agents, stakeholders or advisers make any representation or warranty as to, or accept any liability or responsibility in relation to, the adequacy, accuracy, reasonableness or completeness of the information provided as part of this document or any matter on which the information is based (including but not limited to loss or damage arising as a result of reliance by recipients on the information or any part of it). Any liabilities are hereby expressly disclaimed.



Rev	Date	Drn	Chk'd	App'd	Description
M01	FEB 2023	DS	EE	SMG	ISSUED FOR PHASE 4: PLANNING

Client  
**NTA**  
 Údarás Náisiúnta Iompair  
 National Transport Authority

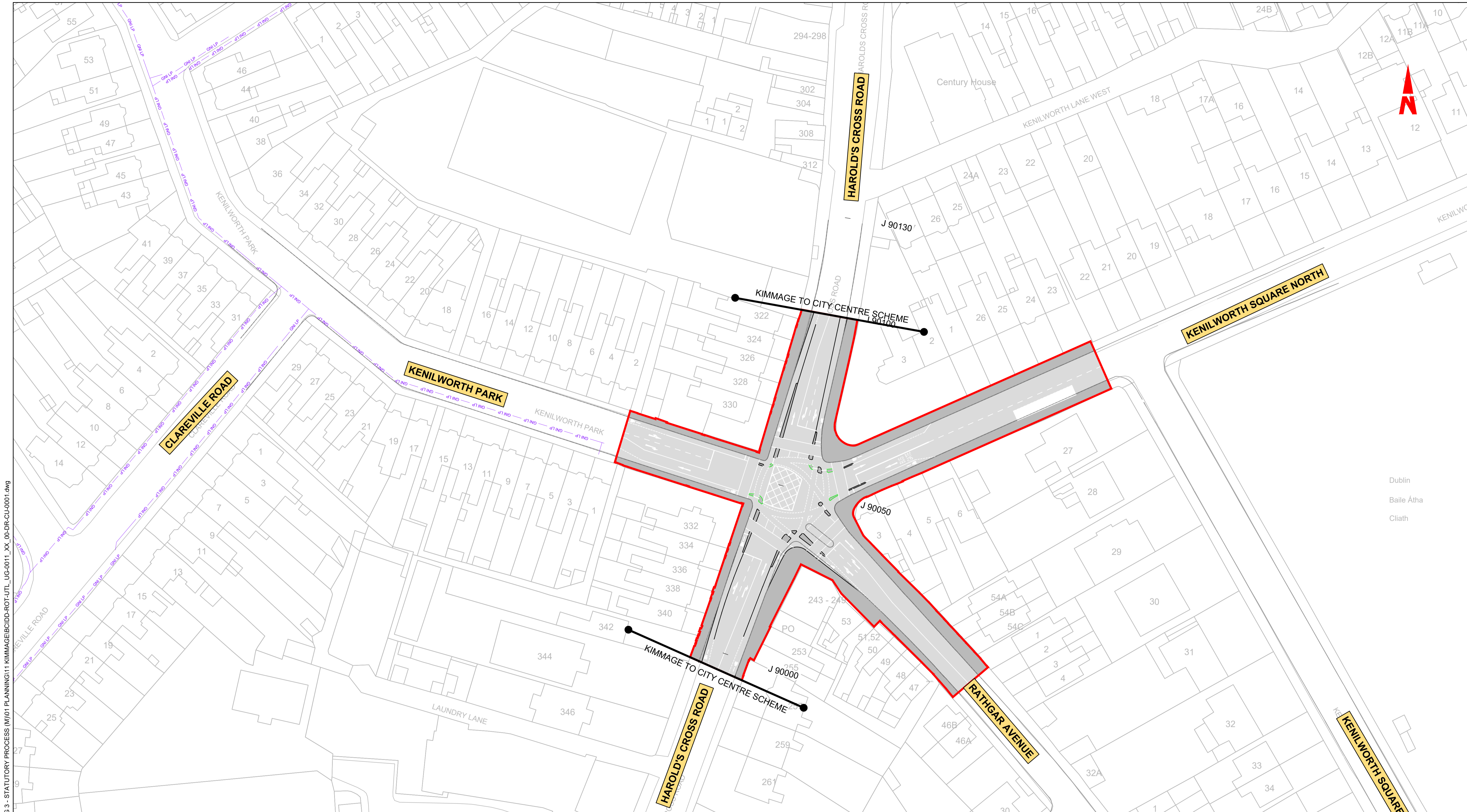
Engineering Designer				
Date	Scale	Drawn	Checked	Approved
FEB 2023	1:500 @ A1 1:1000 @ A3	DS	EE	SMG
Programme Code	Originator Code	QMS Code		
BCIDD	ROT			

Programme Title			
<b>BUSCONNECTS DUBLIN</b>			
<b>CORE BUS CORRIDORS INFRASTRUCTURE WORKS</b>			
Drawing Title			
KIMMAGE TO CITY CENTRE CORE BUS CORRIDOR SCHEME			
GNI ASSET ALTERATIONS			
Drawing File Name	Sheet Number	Status	Rev
BCIDD-ROT-UTL_UG-0011_XX_00-DR-CU-0013	13 of 14	A	M01

DO NOT SCALE USE FIGURED DIMENSIONS ONLY

\\noddbp1\j\2019\1911719117-02\_WIP\08 MODELS\01 CAD\01 PLANNING\11 KIMMAGE\BCIDD-ROT-FUTL\_UG-0011\_XX\_00-DR-CU-0011.dwg





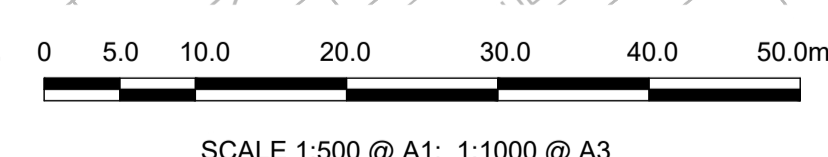
W:\oddbp\11\17\19117-02\_WIP\08 MODELS\01 CAD\01 PLANNING\11 KIMMAGE\BCIDD-ROT-UTL\_UG-0011\_XX\_00-DR-CU-0001.dwg

**LEGEND:**

- EXISTING KERB LINE
- PROPOSED KERB LINE
- GAS NETWORKS IRELAND - EXISTING HIGH PRESSURE GAS NETWORK
- GAS NETWORKS IRELAND - HIGH PRESSURE - PROPOSED UNDERGROUND DIVERSION
- GAS NETWORKS IRELAND - EXISTING MEDIUM PRESSURE GAS NETWORK
- GAS NETWORKS IRELAND - MEDIUM PRESSURE - PROPOSED UNDERGROUND DIVERSION
- GAS NETWORKS IRELAND - EXISTING LOW PRESSURE GAS NETWORK
- GAS NETWORKS IRELAND - LOW PRESSURE - PROPOSED UNDERGROUND DIVERSION
- SITE BOUNDARY LINE
- TEMPORARY LAND ACQUISITION
- EXISTING NETWORK TO BE DECOMMISSIONED

**NOTES:**

- UTILITY LOCATIONS ARE INDICATIVE ONLY AND BASED ON UTILITY PROVIDER RECORDS



**Disclaimer:**

a. © National Transport Authority (NTA) 2022. This drawing is confidential and the copyright in it is owned by NTA. This drawing must not be either loaned, copied or otherwise reproduced in whole or in part or used for any purpose without the prior permission of NTA.

b. This drawing is to be used for the design element identified in the titlebox. Other information shown is to be considered indicative only. The drawing is to be read in conjunction with all other relevant design drawings.

c. O.S. data used for plans are printed under © Ordnance Survey Ireland Government of Ireland. All rights reserved. Licence Number 2022/OSI\_NMA\_180 National Transport Authority. All elevations are in metres and relate to OSI Geoid Model (OSGM15) Malin Head. All Co-ordinates are in Irish Transverse Mercator Grid (ITM) as defined by OSI active local GPS station.

d. Information concerning the position of apparatus shown on this drawing is based on drawings supplied by the utility owners and/or the utility works contractor, whilst every care has been taken in the preparation of this drawing, positions should be taken as approximate and are intended for general guidance only and no representation is made by the NTA as to the accuracy, completeness, sufficiency or otherwise of this drawing and the position of the apparatus. The information contained herein does not purport to be comprehensive or final as the apparatus is subject to being altered and/or superseded. Recipients should not rely on this information. Any liabilities are hereby expressly disclaimed.

e. The information contained herein has been provided by the NTA but does not purport to be comprehensive or final. Recipients should not rely on the information. Neither the NTA nor any of its directors, officers, employees, agents, stakeholders or advisers make any representation or warranty as to, or accept any liability or responsibility in relation to, the adequacy, accuracy, reasonableness or completeness of the information provided as part of this document or any matter on which the information is based (including but not limited to loss or damage arising as a result of reliance by recipients on the information or any part of it). Any liabilities are hereby expressly disclaimed.



Rev	Date	Drn	Chk'd	App'd	Description
M01	FEB 2023	DS	EE	SMG	ISSUED FOR PHASE 4: PLANNING

Client: **NTA** Údarás Náisiúnta Iompair National Transport Authority

Date: FEB 2023 Scale: 1:500 @ A1 1:1000 @ A3

Engineering Designer: **CIROD** TYPSA

Drawn: DS Checked: EE Approved: SMG

Programme Code: BCIDD Originator Code: ROT QMS Code:

Programme Title: <b>BUSCONNECTS DUBLIN CORE BUS CORRIDORS INFRASTRUCTURE WORKS</b>			
Drawing Title: <b>KIMMAGE TO CITY CENTRE CORE BUS CORRIDOR SCHEME GNI ASSET ALTERATIONS</b>			
Drawing File Name: BCIDD-ROT-UTL_UG-0011_XX_00-DR-CU-0014	Sheet Number: 14 of 14	Status: A	Rev: M01

DO NOT SCALE USE FIGURED DIMENSIONS ONLY