

The image features a vibrant yellow background with abstract, overlapping shapes in shades of blue and green. These shapes include rounded rectangles, elongated ovals, and curved bands, some of which contain white circular cutouts. The overall aesthetic is modern and geometric.

Telecommunications Asset Alterations



BUSCONNECTS DUBLIN CORE BUS CORRIDORS INFRASTRUCTURE WORKS

KIMMAGE TO CITY CENTRE CORE BUS CORRIDOR SCHEME

TELECOMMUNICATIONS ASSET ALTERATIONS. RECORDS AND PROPOSED WORKS.

DRAWING SERIES NUMBER(S)	DRAWING SERIES DESCRIPTION
BCIDD-ROT-UTL_IX-0011_XX_00-DR-CU-0004	KIMMAGE TO CITY CENTRE CORE BUS CORRIDOR SCHEME. TELECOMMUNICATIONS ASSETS ALTERATIONS. COVER SHEET
BCIDD-ROT-UTL_KP-0011_XX_00-DR-CU-0004	KIMMAGE TO CITY CENTRE CORE BUS CORRIDOR SCHEME. TELECOMMUNICATIONS ASSETS ALTERATIONS. KEY PLAN
BCIDD-ROT-UTL_UL-0011_XX_00-DR-CU-0001 to 0014	KIMMAGE TO CITY CENTRE CORE BUS CORRIDOR SCHEME. TELECOMMUNICATIONS ASSETS ALTERATIONS. DRAWINGS.

\\wddubhp1u20191917117117-02_WIP08 MODELS01 CAD01 DWG03 STG 3 - STATUTORY PROCESS (M)01 PLANNING11 KIMMAGECOVER SHEETSBCIDD-ROT-UTL_IX-0011_XX_00-DR-CU-0004.dwg

Disclaimer

a. © National Transport Authority (NTA) 2022. This drawing is confidential and the copyright in it is owned by NTA. This drawing must not be either loaned, copied or otherwise reproduced in whole or in part or used for any purpose without the prior permission of NTA.

b. This drawing is to be used for the design element identified in the title block. Other information shown is to be considered indicative only. The drawing is to be read in conjunction with all other relevant design drawings.

c. O.S. data used for plans are printed under © Ordnance Survey Ireland Government of Ireland. All rights reserved. Licence Number 2022/OSI_NMA_180 National Transport Authority. All elevations are in metres and relate to OSI Geoid Model (OSGM15) Mean Head. All Co-ordinates are in Irish Transverse Mercator Grid (ITM) as defined by OSI active local GPS station.

d. Information concerning the position of apparatus shown on this drawing is based on drawings supplied by the utility owners and/or the utility works contractor, whilst every care has been taken in the preparation of this drawing, positions should be taken as approximate and are intended for general guidance only and no representation is made by the NTA as to the accuracy, completeness, sufficiency or otherwise of this drawing and the position of the apparatus. The information contained herein does not purport to be comprehensive or final as the apparatus is subject to being altered and/or superceded. Recipients should not rely on this information. Any liabilities are hereby expressly disclaimed.

e. The information contained herein has been provided by the NTA but does not purport to be comprehensive or final. Recipients should not rely on the information. Neither the NTA nor any of its directors, officers, employees, agents, stakeholders or advisers make any representation or warranty as to, or accept any liability or responsibility in relation to, the adequacy, accuracy, reasonableness or completeness of the information provided as part of this document or any matter on which the information is based (including but not limited to loss or damage arising as a result of reliance by recipients on the information or any part of it). Any liabilities are hereby expressly disclaimed.

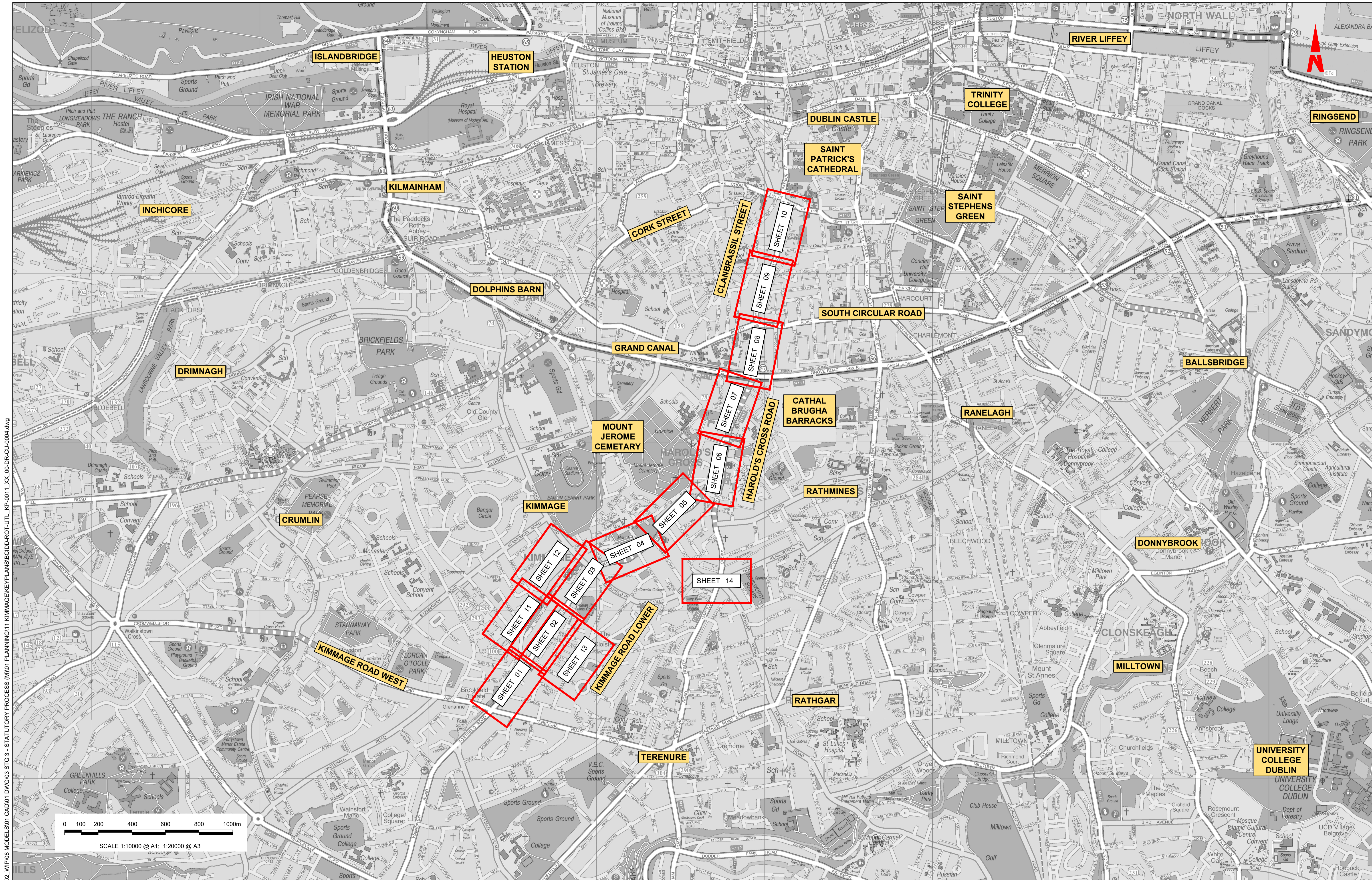


Rev	Date	Drm	Chk'd	App'd	Description
M01	FEB 2023	CG	SMG	SMG	ISSUE FOR PHASE 4: PLANNING

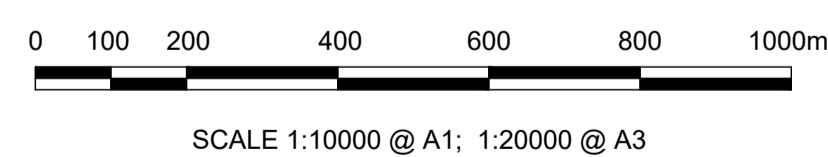
Client NTA Údarás Náisiúnta Iompair National Transport Authority		Engineering Designer ROD TYP SA ROUGHAN & O'DONOVAN TYP SA		
Date FEB 2023	Scale NTS @ A1 NTS @ A3	Drawn CG	Checked SMG	Approved SMG
Programme Code BCIDD	Originator Code ROT	QMS Code		

Programme Title BUSCONNECTS DUBLIN CORE BUS CORRIDORS INFRASTRUCTURE WORKS			
Drawing Title KIMMAGE TO CITY CENTRE CORE BUS CORRIDOR SCHEME TELECOMMUNICATIONS ASSET ALTERATIONS COVER SHEET			
Drawing File Name BCIDD-ROT-UTL_IX-0011_XX_00-DR-CU-0004	Sheet Number 04 of 0	Status A	Rev M01

DO NOT SCALE USE FIGURED DIMENSIONS ONLY



W:\000000\19117-02_WIP08_MODELS\01_CAD\01_PLANNING\11_KIMMAGE\KEYPLANS\BCIDD-ROT-UTL_KP-0011_XX_00-DR-CU-0004.dwg



Disclaimer

a. © National Transport Authority (NTA) 2022. This drawing is confidential and the copyright in it is owned by NTA. This drawing must not be either loaned, copied or otherwise reproduced in whole or in part or used for any purpose without the prior permission of NTA.

b. This drawing is to be used for the design element identified in the titleblock. Other information shown is to be considered indicative only. The drawing is to be read in conjunction with all other relevant design drawings.

c. O.S. data used for plans are printed under © Ordnance Survey Ireland Government of Ireland. All rights reserved. Licence Number 2022/OSI_NMA_180 National Transport Authority. All elevations are in metres and relate to OSI Geoid Model (OSGM15) Mean Head. All Co-ordinates are in Irish Transverse Mercator Grid (ITM) as defined by OSI active local GPS station.

d. Information concerning the position of apparatus shown on this drawing is based on drawings supplied by the utility owners and/or the utility works contractor, whilst every care has been taken in the preparation of this drawing, positions should be as to, or accept any liability or responsibility in relation to, the adequacy, accuracy, reasonableness or completeness of the information provided as part of this document or any matter on which the information is based (including but not limited to loss or damage arising as a result of reliance by recipients on the information or any part of it). Any liabilities are hereby expressly disclaimed.

e. The information contained herein has been provided by the NTA but does not purport to be comprehensive or final. Recipients should not rely on the information. Neither the NTA nor any of its directors, officers, employees, agents, stakeholders or advisers make any representation or warranty as to, or accept any liability or responsibility in relation to, the adequacy, accuracy, reasonableness or completeness of the information provided as part of this document or any matter on which the information is based (including but not limited to loss or damage arising as a result of reliance by recipients on the information or any part of it). Any liabilities are hereby expressly disclaimed.

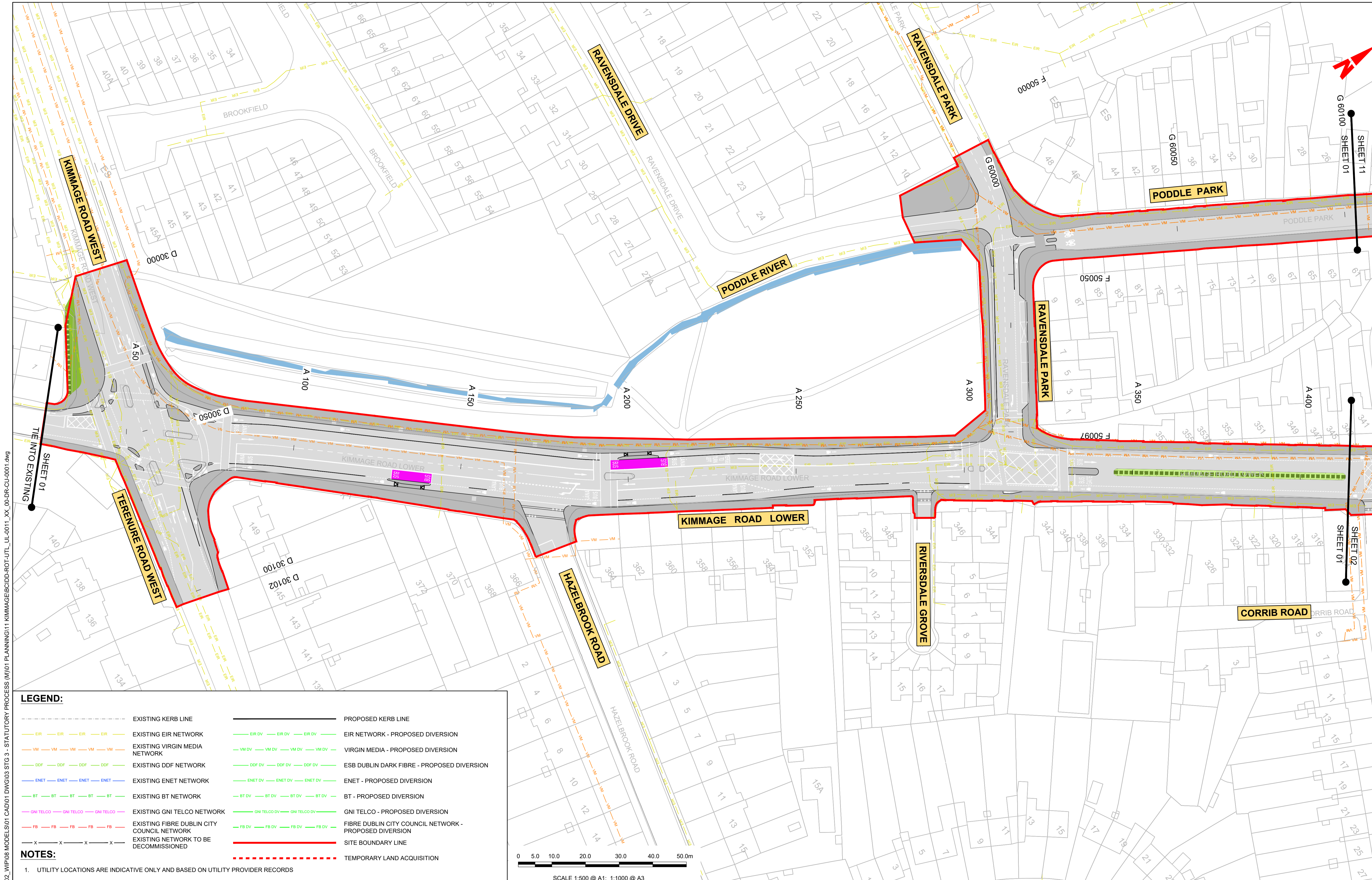


Rev	Date	Drn	Chk'd	App'd	Description
M01	FEB 2023	CG	SMG	SMG	ISSUE FOR PHASE 4: PLANNING

Date	Scale	Drawn	Checked	Approved
FEB 2023	1:10,000 @ A1 1:20,000 @ A3	CG	SMG	SMG
Programme Code	Originator Code	QMS Code		
BCIDD	ROT			

Programme Title BUSCONNECTS DUBLIN CORE BUS CORRIDORS INFRASTRUCTURE WORKS	
Drawing Title KIMMAGE TO CITY CENTRE CORE BUS CORRIDOR SCHEME TELECOMMUNICATIONS ASSET ALTERATIONS KEYPLAN	
Drawing File Name BCIDD-ROT-UTL_KP-0011_XX_00-DR-CU-0004	Sheet Number 04 of 01
Status A	Rev M01

DO NOT SCALE USE FIGURED DIMENSIONS ONLY

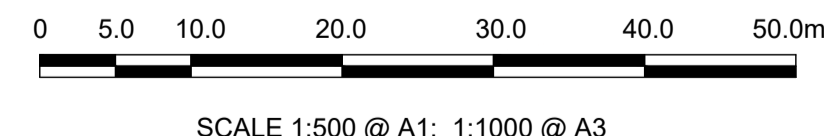


LEGEND:

--- EXISTING KERB LINE	--- PROPOSED KERB LINE
--- EXISTING EIR NETWORK	--- EIR NETWORK - PROPOSED DIVERSION
--- EXISTING VIRGIN MEDIA NETWORK	--- VIRGIN MEDIA - PROPOSED DIVERSION
--- EXISTING DDF NETWORK	--- ESB DUBLIN DARK FIBRE - PROPOSED DIVERSION
--- EXISTING ENET NETWORK	--- ENET - PROPOSED DIVERSION
--- EXISTING BT NETWORK	--- BT - PROPOSED DIVERSION
--- EXISTING GNI TELCO NETWORK	--- GNI TELCO - PROPOSED DIVERSION
--- EXISTING FIBRE DUBLIN CITY COUNCIL NETWORK	--- FIBRE DUBLIN CITY COUNCIL NETWORK - PROPOSED DIVERSION
--- EXISTING NETWORK TO BE DECOMMISSIONED	--- SITE BOUNDARY LINE
	--- TEMPORARY LAND ACQUISITION

NOTES:

- UTILITY LOCATIONS ARE INDICATIVE ONLY AND BASED ON UTILITY PROVIDER RECORDS



Disclaimer:

a. © National Transport Authority (NTA) 2022. This drawing is confidential and the copyright in it is owned by NTA. This drawing must not be either loaned, copied or otherwise reproduced in whole or in part or used for any purpose without the prior permission of NTA.

b. This drawing is to be used for the design element identified in the titleblock. Other information shown is to be considered indicative only. The drawing is to be read in conjunction with all other relevant design drawings.

c. O.S. data used for plans are printed under © Ordnance Survey Ireland Government of Ireland. All rights reserved. Licence Number 2022/OSI_NMA_180 National Transport Authority. All elevations are in metres and relate to OSI Geoid Model (OSGM15) Mean Head. All Co-ordinates are in Irish Transverse Mercator Grid (ITM) as defined by OSI active local GPS station.

d. Information concerning the position of apparatus shown on this drawing is based on drawings supplied by the utility owners and/or the utility works contractor, whilst every care has been taken in the preparation of this drawing, positions should be taken as approximate and are intended for general guidance only and no representation is made by the NTA as to the accuracy, completeness, sufficiency or otherwise of this information. The information contained herein does not purport to be comprehensive or final as the apparatus is subject to being altered and/or superseded. Recipients should not rely on this information. Any liabilities are hereby expressly disclaimed.

e. The information contained herein has been provided by the NTA but does not purport to be comprehensive or final. Recipients should not rely on the information. Neither the NTA nor any of its directors, officers, employees, agents, stakeholders or advisers make any representation or warranty as to, or accept any liability or responsibility in relation to, the adequacy, accuracy, reasonableness or completeness of the information provided as part of this document or any matter on which the information is based (including but not limited to loss or damage arising as a result of reliance by recipients on the information or any part of it). Any liabilities are hereby expressly disclaimed.



Rev	Date	Drm	Chk'd	App'd	Description
M01	FEB 2023	DS	LS	SMG	ISSUED FOR PHASE 4: PLANNING

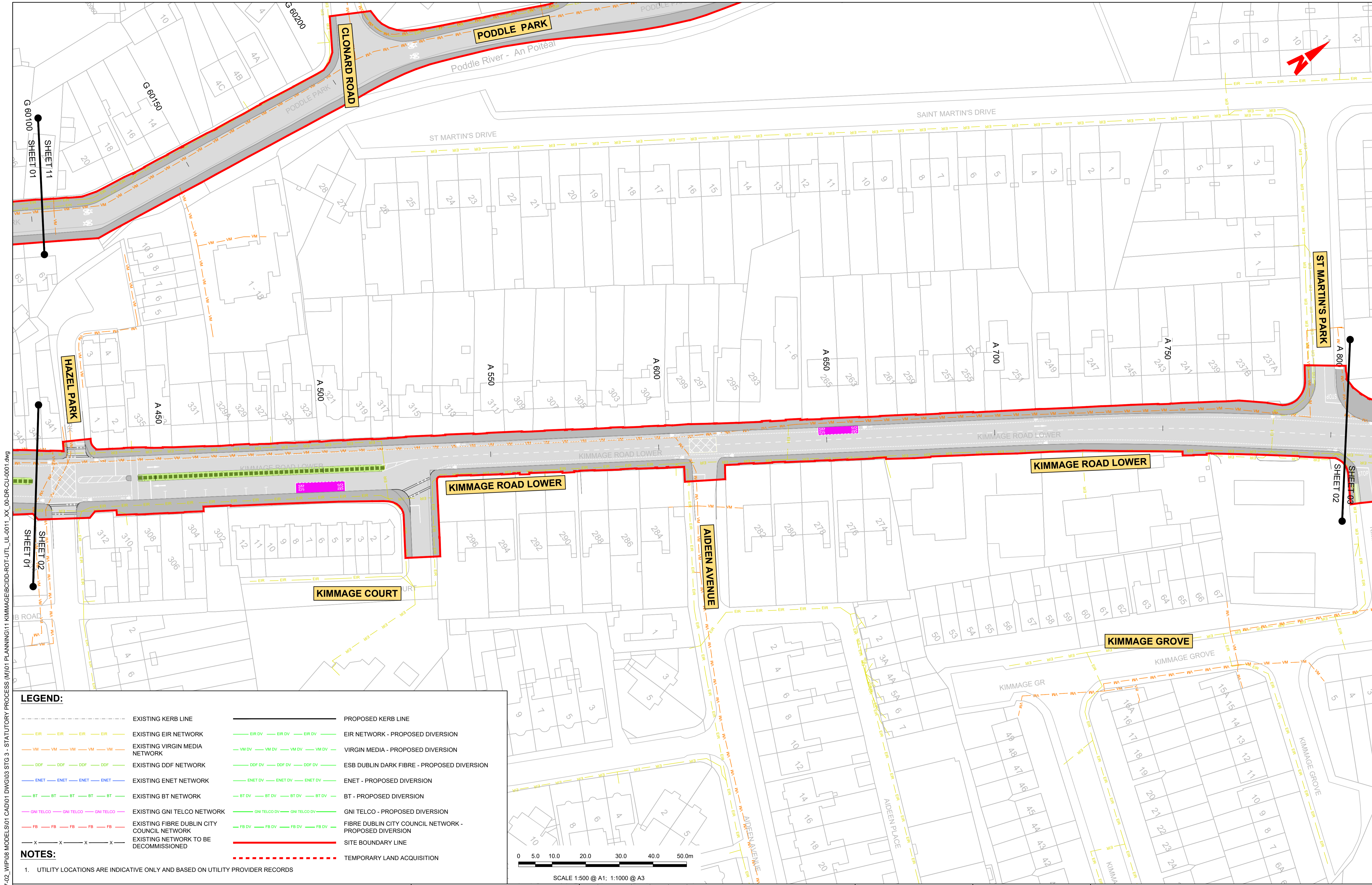
Client

Engineering Designer

Programme Title		BUSCONNECTS DUBLIN	
		CORE BUS CORRIDORS INFRASTRUCTURE WORKS	
Drawing Title		KIMMAGE TO CITY CENTRE CORE BUS CORRIDOR SCHEME TELECOMMUNICATIONS ASSET ALTERATIONS	
Drawing File Name	Sheet Number	Status	Rev
BCIDD-ROT-UTL_UL-0011_XX_00-DR-CU-0001	01 of 14	A	M01

DO NOT SCALE USE FIGURED DIMENSIONS ONLY

\\produbp1\j\2019\191719117-02_WIP\08 MODELS\01 CAD\01 DWG\03 STG 3 - STATUTORY PROCESS (M)\01 PLANNING\11 KIMMAGE\BCIDD-ROT-UTL_UL-0011_XX_00-DR-CU-0001.dwg

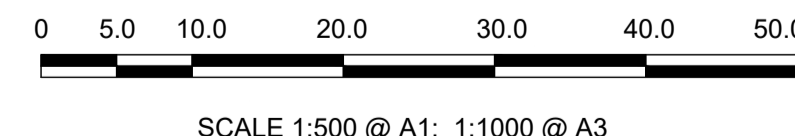


LEGEND:

---	EXISTING KERB LINE	---	PROPOSED KERB LINE
---	EXISTING EIR NETWORK	---	EIR NETWORK - PROPOSED DIVERSION
---	EXISTING VIRGIN MEDIA NETWORK	---	VIRGIN MEDIA - PROPOSED DIVERSION
---	EXISTING DDF NETWORK	---	ESB DUBLIN DARK FIBRE - PROPOSED DIVERSION
---	EXISTING ENET NETWORK	---	ENET - PROPOSED DIVERSION
---	EXISTING BT NETWORK	---	BT - PROPOSED DIVERSION
---	EXISTING GNI TELCO NETWORK	---	GNI TELCO - PROPOSED DIVERSION
---	EXISTING FIBRE DUBLIN CITY COUNCIL NETWORK	---	FIBRE DUBLIN CITY COUNCIL NETWORK - PROPOSED DIVERSION
---	EXISTING NETWORK TO BE DECOMMISSIONED	---	SITE BOUNDARY LINE
---		---	TEMPORARY LAND ACQUISITION

NOTES:

- UTILITY LOCATIONS ARE INDICATIVE ONLY AND BASED ON UTILITY PROVIDER RECORDS



Disclaimer

a. © National Transport Authority (NTA) 2022. This drawing is confidential and the copyright in it is owned by NTA. This drawing must not be either loaned, copied or otherwise reproduced in whole or in part or used for any purpose without the prior permission of NTA.

b. This drawing is to be used for the design element identified in the title block. Other information shown is to be considered indicative only. The drawing is to be read in conjunction with all other relevant design drawings.

c. O.S. data used for plans are printed under © Ordnance Survey Ireland Government of Ireland. All rights reserved. Licence Number 2022/OSI_NMA_180 National Transport Authority. All elevations are in metres and relate to OSI Geoid Model (OSGM15) Mean Head. All Co-ordinates are in Irish Transverse Mercator Grid (ITM) as defined by OSI active local GPS station.

d. Information concerning the position of apparatus shown on this drawing is based on drawings supplied by the utility owners and/or the utility works contractor, whilst every care has been taken in the preparation of this drawing, positions should be taken as approximate and are intended for general guidance only and no representation is made by the NTA as to the accuracy, completeness, sufficiency or otherwise of this drawing and the position of the apparatus. The information contained herein does not purport to be comprehensive or final as the apparatus is subject to being altered and/or superceded. Recipients should not rely on this information. Any liabilities are hereby expressly disclaimed.

e. The information contained herein has been provided by the NTA but does not purport to be comprehensive or final. Recipients should not rely on the information. Neither the NTA nor any of its directors, officers, employees, agents, stakeholders or advisers make any representation or warranty as to, or accept any liability or responsibility in relation to, the adequacy, accuracy, reasonableness or completeness of the information provided as part of this document or any matter on which the information is based (including but not limited to loss or damage arising as a result of reliance by recipients on the information or any part of it). Any liabilities are hereby expressly disclaimed.



Rev	Date	Drm	Chk'd	App'd	Description
M01	FEB 2023	DS	LS	SMG	ISSUED FOR PHASE 4: PLANNING

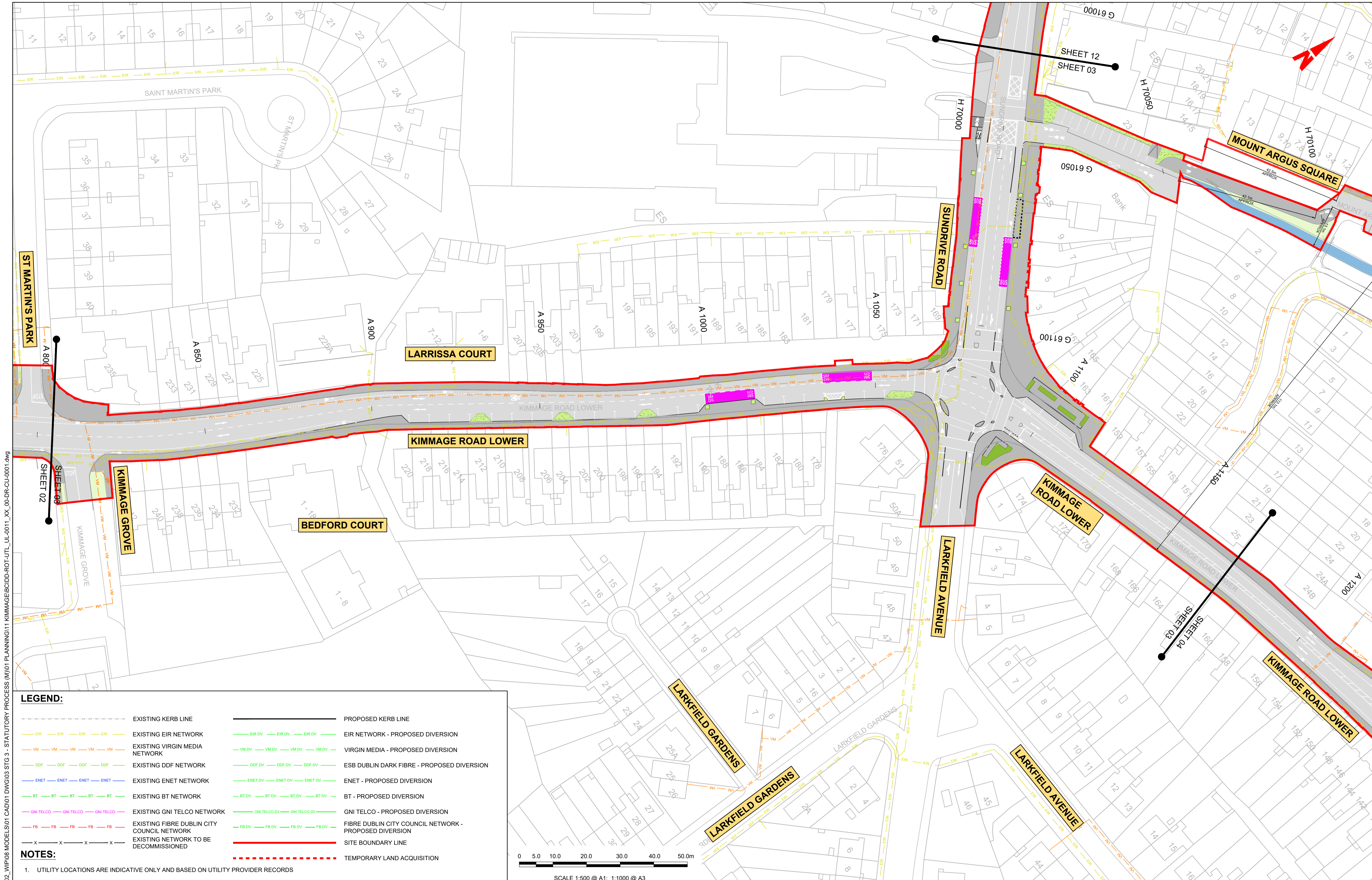
Client

Engineering Designer

Programme Title		BUSCONNECTS DUBLIN	
		CORE BUS CORRIDORS INFRASTRUCTURE WORKS	
Drawing Title		KIMMAGE TO CITY CENTRE CORE BUS CORRIDOR SCHEME TELECOMMUNICATIONS ASSET ALTERATIONS	
Drawing File Name	Sheet Number	Status	Rev
BCIDD-ROT-UTL_UL-0011_XX_00-DR-CU-0002	02 of 14	A	M01

DO NOT SCALE USE FIGURED DIMENSIONS ONLY

\\produbp1\U201917\17117-02_WIP\08 MODELS\01 CAD\01 PLANNING\11 KIMMAGE\BCIDD-ROT-UTL_UL-0011_XX_00-DR-CU-0001.dwg

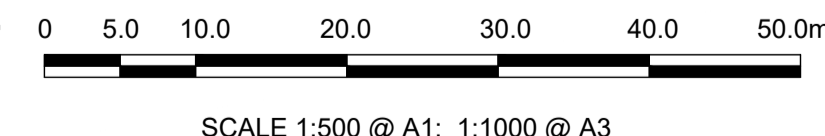


LEGEND:

--- EXISTING KERB LINE	--- PROPOSED KERB LINE
--- EXISTING EIR NETWORK	--- EIR NETWORK - PROPOSED DIVERSION
--- EXISTING VIRGIN MEDIA NETWORK	--- VIRGIN MEDIA - PROPOSED DIVERSION
--- EXISTING DDF NETWORK	--- ESB DUBLIN DARK FIBRE - PROPOSED DIVERSION
--- EXISTING ENET NETWORK	--- ENET - PROPOSED DIVERSION
--- EXISTING BT NETWORK	--- BT - PROPOSED DIVERSION
--- EXISTING GNI TELCO NETWORK	--- GNI TELCO - PROPOSED DIVERSION
--- EXISTING FIBRE DUBLIN CITY COUNCIL NETWORK	--- FIBRE DUBLIN CITY COUNCIL NETWORK - PROPOSED DIVERSION
--- EXISTING NETWORK TO BE DECOMMISSIONED	--- SITE BOUNDARY LINE
	--- TEMPORARY LAND ACQUISITION

NOTES:

- UTILITY LOCATIONS ARE INDICATIVE ONLY AND BASED ON UTILITY PROVIDER RECORDS



Disclaimer

a. © National Transport Authority (NTA) 2022. This drawing is confidential and the copyright in it is owned by NTA. This drawing must not be either loaned, copied or otherwise reproduced in whole or in part or used for any purpose without the prior permission of NTA.

b. This drawing is to be used for the design element identified in the titlebox. Other information shown is to be considered indicative only. The drawing is to be read in conjunction with all other relevant design drawings.

c. O.S. data used for plans are printed under © Ordnance Survey Ireland Government of Ireland. All rights reserved. Licence Number 2022/OSI_NMA_180 National Transport Authority. All elevations are in metres and relate to OSi Geoid Model (OSGM15) Mean Head. All Co-ordinates are in Irish Transverse Mercator Grid (ITM) as defined by OSi active local GPS station.

d. Information concerning the position of apparatus shown on this drawing is based on drawings supplied by the utility owners and/or the utility works contractor, whilst every care has been taken in the preparation of this drawing, positions should be taken as approximate and are intended for general guidance only and no representation is made by the NTA as to the accuracy, completeness, sufficiency or otherwise of this information. The information contained herein does not purport to be comprehensive or final as the apparatus is subject to being altered and/or superceded. Recipients should not rely on this information. Any liabilities are hereby expressly disclaimed.

e. The information contained herein has been provided by the NTA but does not purport to be comprehensive or final. Recipients should not rely on the information. Neither the NTA nor any of its directors, officers, employees, agents, stakeholders or advisers make any representation or warranty as to, or accept any liability or responsibility in relation to, the adequacy, accuracy, reasonableness or completeness of the information provided as part of this document or any matter on which the information is based (including but not limited to loss or damage arising as a result of reliance by recipients on the information or any part of it). Any liabilities are hereby expressly disclaimed.



Rev	Date	Drn	Chk'd	App'd	Description
M01	FEB 2023	DS	LS	SMG	ISSUED FOR PHASE 4: PLANNING

Client: **NTA**
Udárás Náisiúnta Iompair
National Transport Authority

Engineering Designer: **CIROD**
TYPSA

Date: FEB 2023
Scale: 1:500 @ A1
1:1000 @ A3

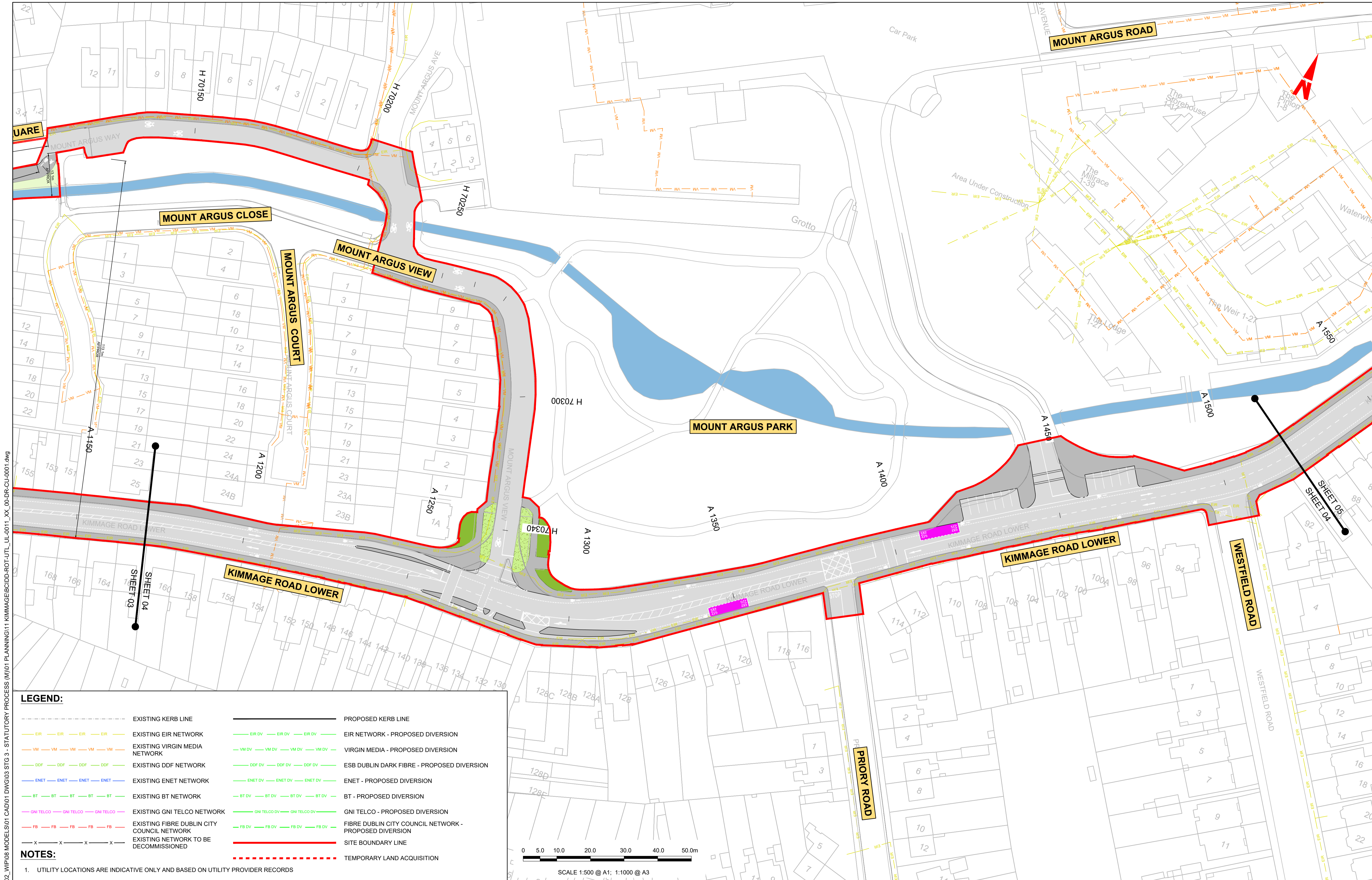
Programme Code: BCIDD
Originator Code: ROT

Drawn: DS
Checked: EE
Approved: SMG

Programme Title: BUSCONNECTS DUBLIN CORE BUS CORRIDORS INFRASTRUCTURE WORKS			
Drawing Title: KIMMAGE TO CITY CENTRE CORE BUS CORRIDOR SCHEME TELECOMMUNICATIONS ASSET ALTERATIONS			
Drawing File Name: BCIDD-ROT-UTL_UL-0011_XX_00-DR-CU-0003	Sheet Number: 03 of 14	Status: A	Rev: M01

DO NOT SCALE USE FIGURED DIMENSIONS ONLY

\\produbp1\j\2019\1917\19117-02_WIP\08 MODELS\01 CAD\01 DWG\03 STG 3 - STATUTORY PROCESS (M)\01 PLANNING\11 KIMMAGE\BCIDD-ROT-UTL_UL-0011_XX_00-DR-CU-0001.dwg

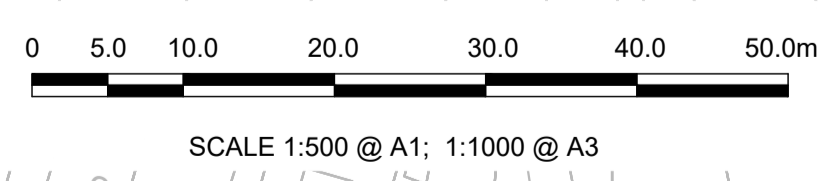


LEGEND:

--- EXISTING KERB LINE	— PROPOSED KERB LINE
— EIR — EIR — EIR — EIR — EIR — EIR	— EIR DV — EIR DV — EIR DV — EIR DV — EIR DV — EIR DV
— VM — VM — VM — VM — VM — VM	— VM DV — VM DV — VM DV — VM DV — VM DV — VM DV
— DDF — DDF — DDF — DDF — DDF — DDF	— DDF DV — DDF DV — DDF DV — DDF DV — DDF DV — DDF DV
— ENET — ENET — ENET — ENET — ENET — ENET	— ENET DV — ENET DV — ENET DV — ENET DV — ENET DV — ENET DV
— BT — BT — BT — BT — BT — BT	— BT DV — BT DV — BT DV — BT DV — BT DV — BT DV
— GNI TELCO — GNI TELCO — GNI TELCO — GNI TELCO — GNI TELCO — GNI TELCO	— GNI TELCO DV — GNI TELCO DV — GNI TELCO DV — GNI TELCO DV — GNI TELCO DV — GNI TELCO DV
— FB — FB — FB — FB — FB — FB	— FB DV — FB DV — FB DV — FB DV — FB DV — FB DV
— X — X — X — X — X — X	— SITE BOUNDARY LINE
	— TEMPORARY LAND ACQUISITION

NOTES:

- UTILITY LOCATIONS ARE INDICATIVE ONLY AND BASED ON UTILITY PROVIDER RECORDS



W:\000000\191717-02_WIP\08 MODELS\01 CAD\01 DWG\03 STG 3 - STATUTORY PROCESS (M)\01 PLANNING\11 KIMMAGE\BCIDD-ROT-UTL_UL-0011_XX_00-DR-CU-0001.dwg
 W:\000000\191717-02_WIP\08 MODELS\01 CAD\01 DWG\03 STG 3 - STATUTORY PROCESS (M)\01 PLANNING\11 KIMMAGE\BCIDD-ROT-UTL_UL-0011_XX_00-DR-CU-0001.dwg

Disclaimer:

a. © National Transport Authority (NTA) 2022. This drawing is confidential and the copyright in it is owned by NTA. This drawing must not be either loaned, copied or otherwise reproduced in whole or in part or used for any purpose without the prior permission of NTA.

b. This drawing is to be used for the design element identified in the titlebox. Other information shown is to be considered indicative only. The drawing is to be read in conjunction with all other relevant design drawings.

c. O.S. data used for plans are printed under © Ordnance Survey Ireland Government of Ireland. All rights reserved. Licence Number 2022/OSI_NMA_180 National Transport Authority. All elevations are in metres and relate to OSI Geoid Model (OSGM15) Mean Head. All Co-ordinates are in Irish Transverse Mercator Grid (ITM) as defined by OSI active local GPS station.

d. Information concerning the position of apparatus shown on this drawing is based on drawings supplied by the utility owners and/or the utility works contractor, whilst every care has been taken in the preparation of this drawing, positions should be taken as approximate and are intended for general guidance only and no representation is made by the NTA as to the accuracy, completeness, sufficiency or otherwise of this drawing and the position of the apparatus. The information contained herein does not purport to be comprehensive or final as the apparatus is subject to being altered and/or superseded. Recipients should not rely on this information. Any liabilities are hereby expressly disclaimed.

e. The information contained herein has been provided by the NTA but does not purport to be comprehensive or final. Recipients should not rely on the information. Neither the NTA nor any of its directors, officers, employees, agents, stakeholders or advisers make any representation or warranty as to, or accept any liability or responsibility in relation to, the adequacy, accuracy, reasonableness or completeness of the information provided as part of this document or any matter on which the information is based (including but not limited to loss or damage arising as a result of reliance by recipients on the information or any part of it). Any liabilities are hereby expressly disclaimed.

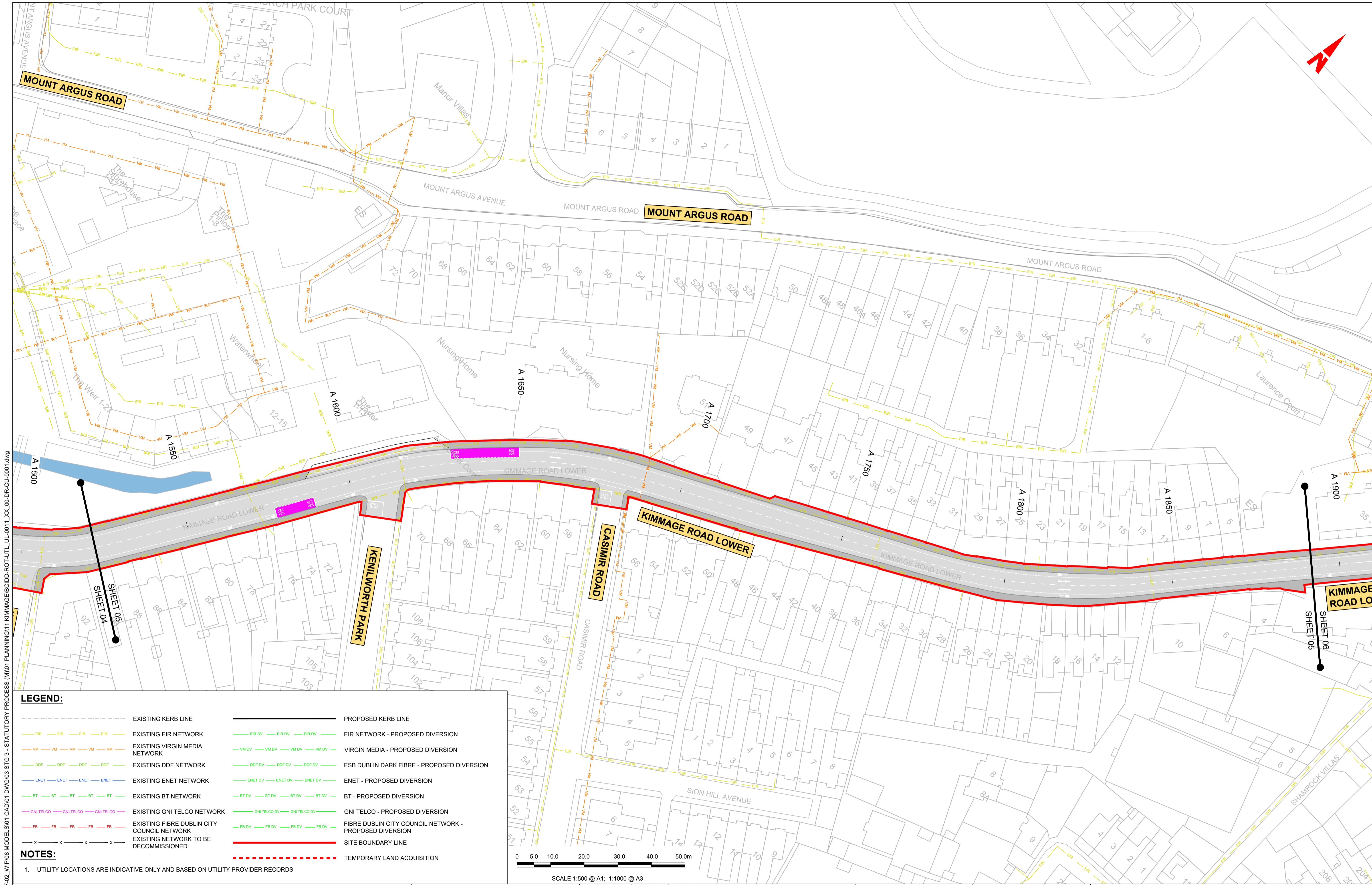


Rev	Date	Drm	Chk'd	App'd	Description
M01	FEB 2023	DS	LS	SMG	ISSUED FOR PHASE 4: PLANNING

Client NTA Udarás Náisiúnta Iompair National Transport Authority		Engineering Designer CIROD TYPSA		
Date FEB 2023	Scale 1:500 @ A1 1:1000 @ A3	Drawn DS	Checked EE	Approved SMG
Programme Code BCIDD	Originator Code ROT	QMS Code		

Programme Title BUSCONNECTS DUBLIN CORE BUS CORRIDORS INFRASTRUCTURE WORKS				
Drawing Title KIMMAGE TO CITY CENTRE CORE BUS CORRIDOR SCHEME TELECOMMUNICATIONS ASSET ALTERATIONS				
Drawing File Name BCIDD-ROT-UTL_UL-0011_XX_00-DR-CU-0004	Sheet Number 04 of 14	Status A	Rev M01	

DO NOT SCALE USE FIGURED DIMENSIONS ONLY

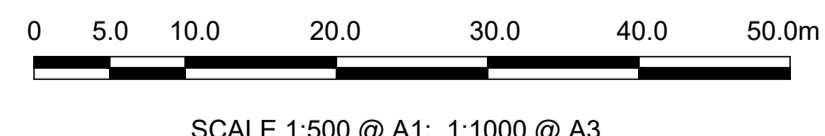


LEGEND:

--- EXISTING KERB LINE	--- PROPOSED KERB LINE
--- EXISTING EIR NETWORK	--- EIR NETWORK - PROPOSED DIVERSION
--- EXISTING VIRGIN MEDIA NETWORK	--- VIRGIN MEDIA - PROPOSED DIVERSION
--- EXISTING DDF NETWORK	--- ESB DUBLIN DARK FIBRE - PROPOSED DIVERSION
--- EXISTING ENET NETWORK	--- ENET - PROPOSED DIVERSION
--- EXISTING BT NETWORK	--- BT - PROPOSED DIVERSION
--- EXISTING GNI TELCO NETWORK	--- GNI TELCO - PROPOSED DIVERSION
--- EXISTING FIBRE DUBLIN CITY COUNCIL NETWORK	--- FIBRE DUBLIN CITY COUNCIL NETWORK - PROPOSED DIVERSION
--- EXISTING NETWORK TO BE DECOMMISSIONED	--- SITE BOUNDARY LINE
	--- TEMPORARY LAND ACQUISITION

NOTES:

- UTILITY LOCATIONS ARE INDICATIVE ONLY AND BASED ON UTILITY PROVIDER RECORDS



Disclaimer:

a. © National Transport Authority (NTA) 2022. This drawing is confidential and the copyright in it is owned by NTA. This drawing must not be either loaned, copied or otherwise reproduced in whole or in part or used for any purpose without the prior permission of NTA.

b. This drawing is to be used for the design element identified in the title block. Other information shown is to be considered indicative only. The drawing is to be read in conjunction with all other relevant design drawings.

c. O.S. data used for plans are printed under © Ordnance Survey Ireland Government of Ireland. All rights reserved. Licence Number 2022/OSI_NMA_180 National Transport Authority. All elevations are in metres and relate to OSI Geoid Model (OSGM15) Mean Head. All Co-ordinates are in Irish Transverse Mercator Grid (ITM) as defined by OSI active local GPS station.

d. Information concerning the position of apparatus shown on this drawing is based on drawings supplied by the utility owners and/or the utility works contractor, whilst every care has been taken in the preparation of this drawing, positions should be taken as approximate and are intended for general guidance only and no representation is made by the NTA as to the accuracy, completeness, sufficiency or otherwise of this drawing and the position of the apparatus. The information contained herein does not purport to be comprehensive or final as the apparatus is subject to being altered and/or superseded. Recipients should not rely on this information. Any liabilities are hereby expressly disclaimed.

e. The information contained herein has been provided by the NTA but does not purport to be comprehensive or final. Recipients should not rely on the information. Neither the NTA nor any of its directors, officers, employees, agents, stakeholders or advisers make any representation or warranty as to, or accept any liability or responsibility in relation to, the adequacy, accuracy, reasonableness or completeness of the information provided as part of this document or any matter on which the information is based (including but not limited to loss or damage arising as a result of reliance by recipients on the information or any part of it). Any liabilities are hereby expressly disclaimed.



Rev	Date	Drm	Chk'd	App'd	Description
M01	FEB 2023	DS	LS	SMG	ISSUED FOR PHASE 4: PLANNING

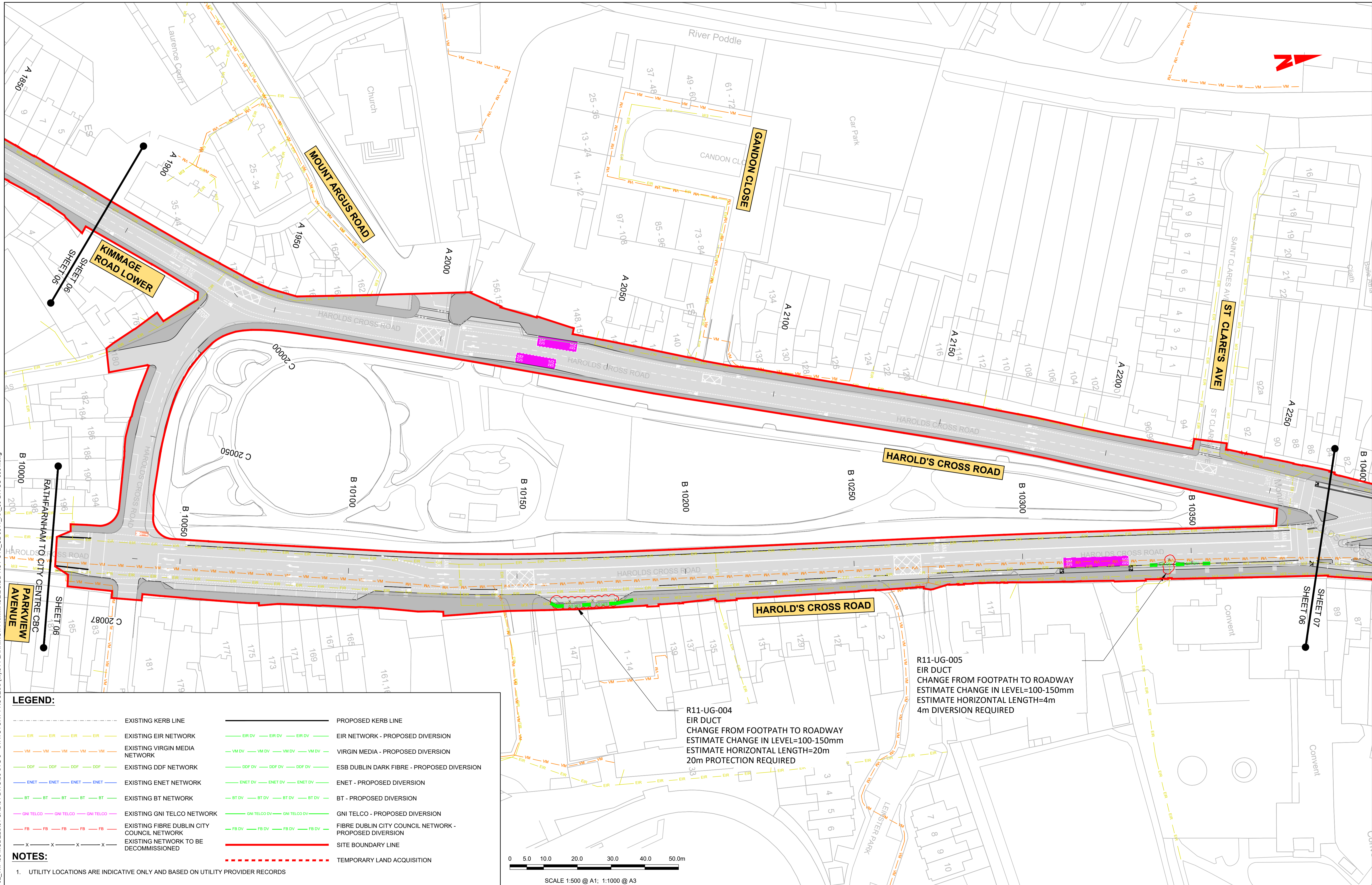
Client

Engineering Designer

Programme Title		BUSCONNECTS DUBLIN CORE BUS CORRIDORS INFRASTRUCTURE WORKS		
Drawing Title		KIMMAGE TO CITY CENTRE CORE BUS CORRIDOR SCHEME TELECOMMUNICATIONS ASSET ALTERATIONS		
Date	Scale	Drawn	Checked	Approved
FEB 2023	1:500 @ A1 1:1000 @ A3	DS	EE	SMG
Programme Code	Originator Code	QMS Code		
BCIDD	ROT			
Drawing File Name	Sheet Number	Status	Rev	
BCIDD-ROT-UTL_UL-0011_XX_00-DR-CU-0005	05 of 14	A	M01	

DO NOT SCALE USE FIGURED DIMENSIONS ONLY

\\produbp1\j2019\19117-02_WIP\08 MODELS\01 CAD\01 PLANNING\11 KIMMAGE\BCIDD-ROT-UTL_UL-0011_XX_00-DR-CU-0001.dwg



LEGEND:

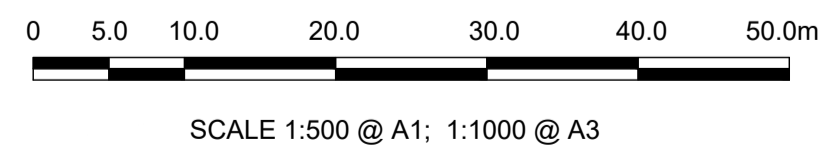
--- EXISTING KERB LINE	--- PROPOSED KERB LINE
--- EXISTING EIR NETWORK	--- EIR NETWORK - PROPOSED DIVERSION
--- EXISTING VIRGIN MEDIA NETWORK	--- VIRGIN MEDIA - PROPOSED DIVERSION
--- EXISTING DDF NETWORK	--- ESB DUBLIN DARK FIBRE - PROPOSED DIVERSION
--- EXISTING ENET NETWORK	--- ENET - PROPOSED DIVERSION
--- EXISTING BT NETWORK	--- BT - PROPOSED DIVERSION
--- EXISTING GNI TELCO NETWORK	--- GNI TELCO - PROPOSED DIVERSION
--- EXISTING FIBRE DUBLIN CITY COUNCIL NETWORK	--- FIBRE DUBLIN CITY COUNCIL NETWORK - PROPOSED DIVERSION
--- EXISTING NETWORK TO BE DECOMMISSIONED	--- SITE BOUNDARY LINE
	--- TEMPORARY LAND ACQUISITION

NOTES:

- UTILITY LOCATIONS ARE INDICATIVE ONLY AND BASED ON UTILITY PROVIDER RECORDS

R11-UG-004
 EIR DUCT
 CHANGE FROM FOOTPATH TO ROADWAY
 ESTIMATE CHANGE IN LEVEL=100-150mm
 ESTIMATE HORIZONTAL LENGTH=20m
 20m PROTECTION REQUIRED

R11-UG-005
 EIR DUCT
 CHANGE FROM FOOTPATH TO ROADWAY
 ESTIMATE CHANGE IN LEVEL=100-150mm
 ESTIMATE HORIZONTAL LENGTH=4m
 4m DIVERSION REQUIRED



Disclaimer:

a. © National Transport Authority (NTA) 2022. This drawing is confidential and the copyright in it is owned by NTA. This drawing must not be either loaned, copied or otherwise reproduced in whole or in part or used for any purpose without the prior permission of NTA.

b. This drawing is to be used for the design element identified in the title block. Other information shown is to be considered indicative only. The drawing is to be read in conjunction with all other relevant design drawings.

c. O.S. data used for plans are printed under © Ordnance Survey Ireland Government of Ireland. All rights reserved. Licence Number 2022/OSI_NMA_180 National Transport Authority. All elevations are in metres and relate to OSI Geoid Model (OSGM15) Mean Head. All Co-ordinates are in Irish Transverse Mercator Grid (ITM) as defined by OSI active local GPS station.

d. Information concerning the position of apparatus shown on this drawing is based on drawings supplied by the utility owners and/or the utility works contractor, whilst every care has been taken in the preparation of this drawing, positions should be taken as approximate and are intended for general guidance only and no representation is made by the NTA as to the accuracy, completeness, sufficiency or otherwise of this drawing and the position of the apparatus. The information contained herein does not purport to be comprehensive or final as the apparatus is subject to being altered and/or superseded. Recipients should not rely on this information. Any liabilities are hereby expressly disclaimed.

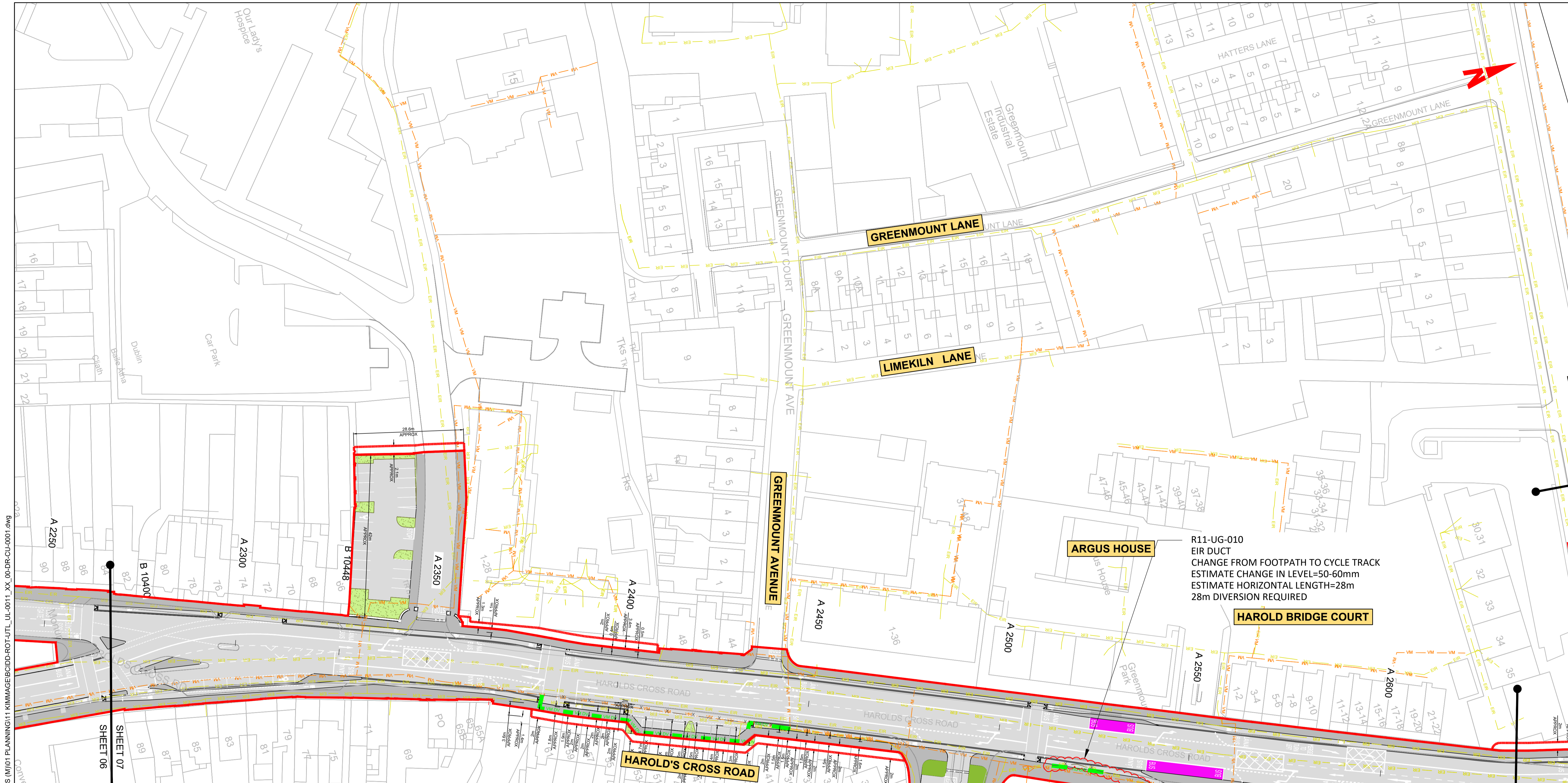
e. The information contained herein has been provided by the NTA but does not purport to be comprehensive or final. Recipients should not rely on the information. Neither the NTA nor any of its directors, officers, employees, agents, stakeholders or advisers make any representation or warranty as to, or accept any liability or responsibility in relation to, the adequacy, accuracy, reasonableness or completeness of the information provided as part of this document or any matter on which the information is based (including but not limited to loss or damage arising as a result of reliance by recipients on the information or any part of it). Any liabilities are hereby expressly disclaimed.



Rev	Date	Drm	Chk'd	App'd	Description
M01	FEB 2023	DS	LS	SMG	ISSUED FOR PHASE 4: PLANNING

Client Údarás Náisiúnta Iompair National Transport Authority		Engineering Designer FIDR TYPSA		
Date	Scale	Drawn	Checked	Approved
FEB 2023	1:500 @ A1 1:1000 @ A3	DS	EE	SMG
Programme Code	Originator Code	QMS Code		
BCIDD	ROT			

Programme Title BUSCONNECTS DUBLIN CORE BUS CORRIDORS INFRASTRUCTURE WORKS			
Drawing Title KIMMAGE TO CITY CENTRE CORE BUS CORRIDOR SCHEME TELECOMMUNICATIONS ASSET ALTERATIONS			
Drawing File Name	Sheet Number	Status	Rev
BCIDD-ROT-UTL_UL-0011_XX_00-DR-CU-0006	06 of 14	A	M01



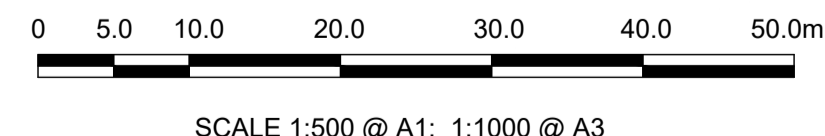
R11-UG-010
 EIR DUCT
 CHANGE FROM FOOTPATH TO CYCLE TRACK
 ESTIMATE CHANGE IN LEVEL=50-60mm
 ESTIMATE HORIZONTAL LENGTH=28m
 28m DIVERSION REQUIRED

LEGEND:

---	EXISTING KERB LINE	---	PROPOSED KERB LINE
---	EXISTING EIR NETWORK	---	EIR NETWORK - PROPOSED DIVERSION
---	EXISTING VIRGIN MEDIA NETWORK	---	VIRGIN MEDIA - PROPOSED DIVERSION
---	EXISTING DDF NETWORK	---	ESB DUBLIN DARK FIBRE - PROPOSED DIVERSION
---	EXISTING ENET NETWORK	---	ENET - PROPOSED DIVERSION
---	EXISTING BT NETWORK	---	BT - PROPOSED DIVERSION
---	EXISTING GNI TELCO NETWORK	---	GNI TELCO - PROPOSED DIVERSION
---	EXISTING FIBRE DUBLIN CITY COUNCIL NETWORK	---	FIBRE DUBLIN CITY COUNCIL NETWORK - PROPOSED DIVERSION
---	EXISTING NETWORK TO BE DECOMMISSIONED	---	SITE BOUNDARY LINE
---		---	TEMPORARY LAND ACQUISITION

NOTES:

- UTILITY LOCATIONS ARE INDICATIVE ONLY AND BASED ON UTILITY PROVIDER RECORDS



Disclaimer:

a. © National Transport Authority (NTA) 2022. This drawing is confidential and the copyright in it is owned by NTA. This drawing must not be either loaned, copied or otherwise reproduced in whole or in part or used for any purpose without the prior permission of NTA.

b. This drawing is to be used for the design element identified in the titlebox. Other information shown is to be considered indicative only. The drawing is to be read in conjunction with all other relevant design drawings.

c. O.S. data used for plans are printed under © Ordnance Survey Ireland Government of Ireland. All rights reserved. Licence Number 2022/OSI_NMA_180 National Transport Authority. All elevations are in metres and relate to OSI Geoid Model (OSGM15) Mean Head. All Co-ordinates are in Irish Transverse Mercator Grid (ITM) as defined by OSI active local GPS station.

d. Information concerning the position of apparatus shown on this drawing is based on drawings supplied by the utility owners and/or the utility works contractor, whilst every care has been taken in the preparation of this drawing, positions should be taken as approximate and are intended for general guidance only and no representation is made by the NTA as to the accuracy, completeness, sufficiency or otherwise of this drawing and the position of the apparatus. The information contained herein does not purport to be comprehensive or final as the apparatus is subject to being altered and/or superceded. Recipients should not rely on this information. Any liabilities are hereby expressly disclaimed.

e. The information contained herein has been provided by the NTA but does not purport to be comprehensive or final. Recipients should not rely on the information. Neither the NTA nor any of its directors, officers, employees, agents, stakeholders or advisers make any representation or warranty as to, or accept any liability or responsibility in relation to, the adequacy, accuracy, reasonableness or completeness of the information provided as part of this document or any matter on which the information is based (including but not limited to loss or damage arising as a result of reliance by recipients on the information or any part of it). Any liabilities are hereby expressly disclaimed.



Rev	Date	Drm	Chk'd	App'd	Description
M01	FEB 2023	DS	LS	SMG	ISSUED FOR PHASE 4: PLANNING

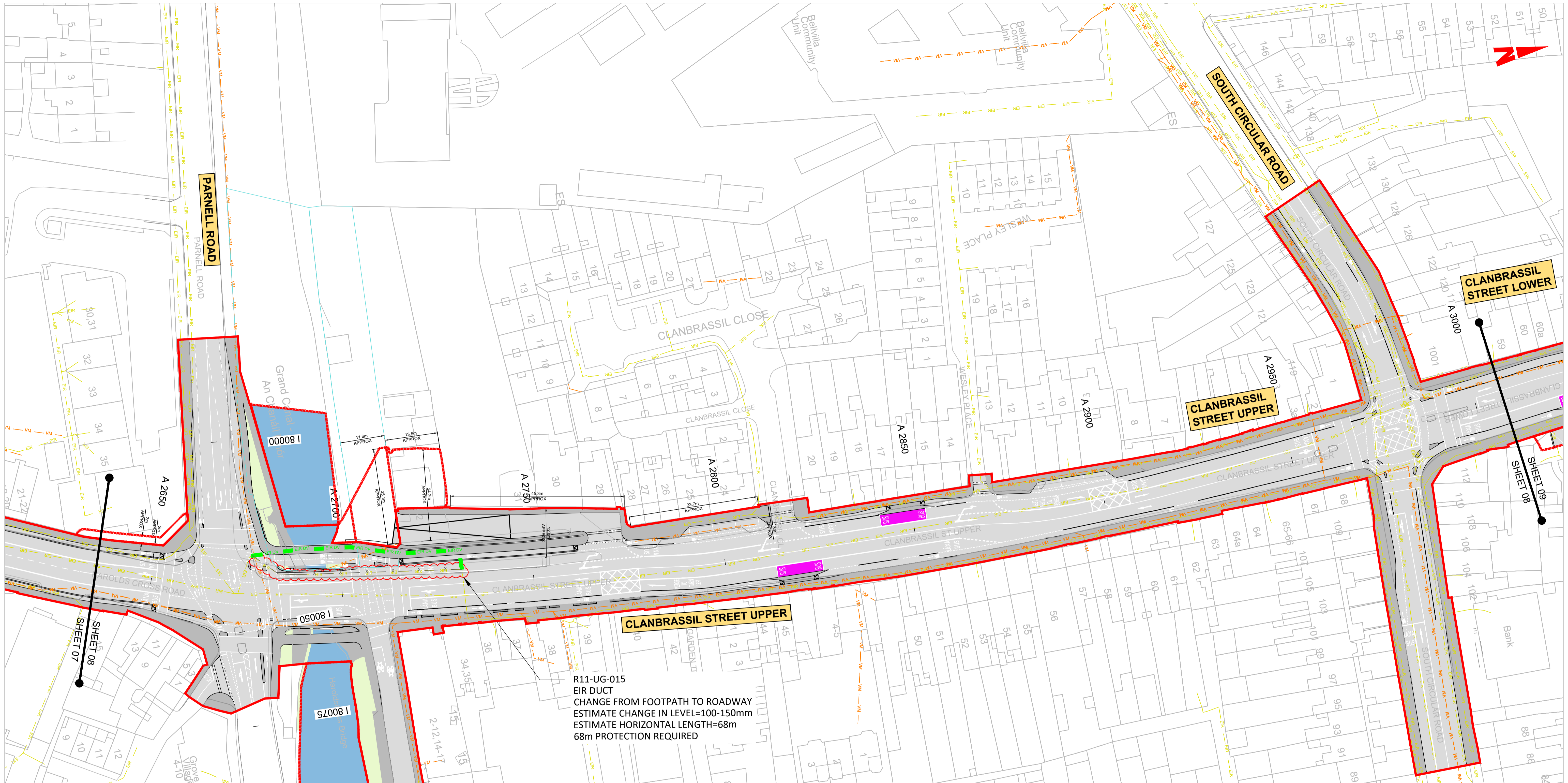
Client
NTA
 Údarás Náisiúnta Iompair
 National Transport Authority

Engineering Designer
CIROD
 TYPSA

Programme Title BUSCONNECTS DUBLIN CORE BUS CORRIDORS INFRASTRUCTURE WORKS	
Drawing Title KIMMAGE TO CITY CENTRE CORE BUS CORRIDOR SCHEME TELECOMMUNICATIONS ASSET ALTERATIONS	
Drawing File Name BCIDD-ROT-UTL_UL-0011_XX_00-DR-CU-0007	Sheet Number 07 of 14
Status A	Rev M01

DO NOT SCALE USE FIGURED DIMENSIONS ONLY

W:\000\019117-02_WIP\08 MODELS\01 CAD\01 DWG\03 STG 3 - STATUTORY PROCESS (M)\01 PLANNING\11 KIMMAGE\BIDD-ROT-UTL_UL-0011_XX_00-DR-CU-0001.dwg



R11-UG-015
 EIR DUCT
 CHANGE FROM FOOTPATH TO ROADWAY
 ESTIMATE CHANGE IN LEVEL=100-150mm
 ESTIMATE HORIZONTAL LENGTH=68m
 68m PROTECTION REQUIRED

LEGEND:

---	EXISTING KERB LINE	---	PROPOSED KERB LINE
ER	EXISTING EIR NETWORK	ER DV	EIR NETWORK - PROPOSED DIVERSION
VM	EXISTING VIRGIN MEDIA NETWORK	VM DV	VIRGIN MEDIA - PROPOSED DIVERSION
DDF	EXISTING DDF NETWORK	DDF DV	ESB DUBLIN DARK FIBRE - PROPOSED DIVERSION
ENET	EXISTING ENET NETWORK	ENET DV	ENET - PROPOSED DIVERSION
BT	EXISTING BT NETWORK	BT DV	BT - PROPOSED DIVERSION
GNI TELCO	EXISTING GNI TELCO NETWORK	GNI TELCO DV	GNI TELCO - PROPOSED DIVERSION
FB	EXISTING FIBRE DUBLIN CITY COUNCIL NETWORK	FB DV	FIBRE DUBLIN CITY COUNCIL NETWORK - PROPOSED DIVERSION
X	EXISTING NETWORK TO BE DECOMMISSIONED	---	SITE BOUNDARY LINE
		---	TEMPORARY LAND ACQUISITION

NOTES:

- UTILITY LOCATIONS ARE INDICATIVE ONLY AND BASED ON UTILITY PROVIDER RECORDS

Disclaimer
 a. © National Transport Authority (NTA) 2022. This drawing is confidential and the copyright in it is owned by NTA. This drawing must not be either loaned, copied or otherwise reproduced in whole or in part or used for any purpose without the prior permission of NTA.
 b. This drawing is to be used for the design element identified in the titleblock. Other information shown is to be considered indicative only. The drawing is to be read in conjunction with all other relevant design drawings.
 c. O.S. data used for plans are printed under © Ordnance Survey Ireland Government of Ireland. All rights reserved. Licence Number 2022/OSI_NMA_180 National Transport Authority. All elevations are in metres and relate to OSI Geoid Model (OSGM15) Mean Head. All Co-ordinates are in Irish

Transverse Mercator Grid (ITM) as defined by OSI active local GPS station.
 d. Information concerning the position of apparatus shown on this drawing is based on drawings supplied by the utility owners and/or the utility works contractor, whilst every care has been taken in the preparation of this drawing, positions should be taken as approximate and are intended for general guidance only and no representation is made by the NTA as to the accuracy, completeness, sufficiency or otherwise of this drawing and the position of the apparatus. The information contained herein does not purport to be comprehensive or final as the apparatus is subject to being altered and/or superseded. Recipients should not rely on this information. Any liabilities are hereby expressly disclaimed.

The information contained herein has been provided by the NTA but does not purport to be comprehensive or final. Recipients should not rely on the information. Neither the NTA nor any of its directors, officers, employees, agents, stakeholders or advisers make any representation or warranty as to, or accept any liability or responsibility in relation to, the adequacy, accuracy, reasonableness or completeness of the information provided as part of this document or any matter on which the information is based (including but not limited to loss or damage arising as a result of reliance by recipients on the information or any part of it). Any liabilities are hereby expressly disclaimed.



Rev	Date	Dm	Chk'd	App'd	Description
M01	FEB 2023	DS	LS	SMG	ISSUED FOR PHASE 4: PLANNING

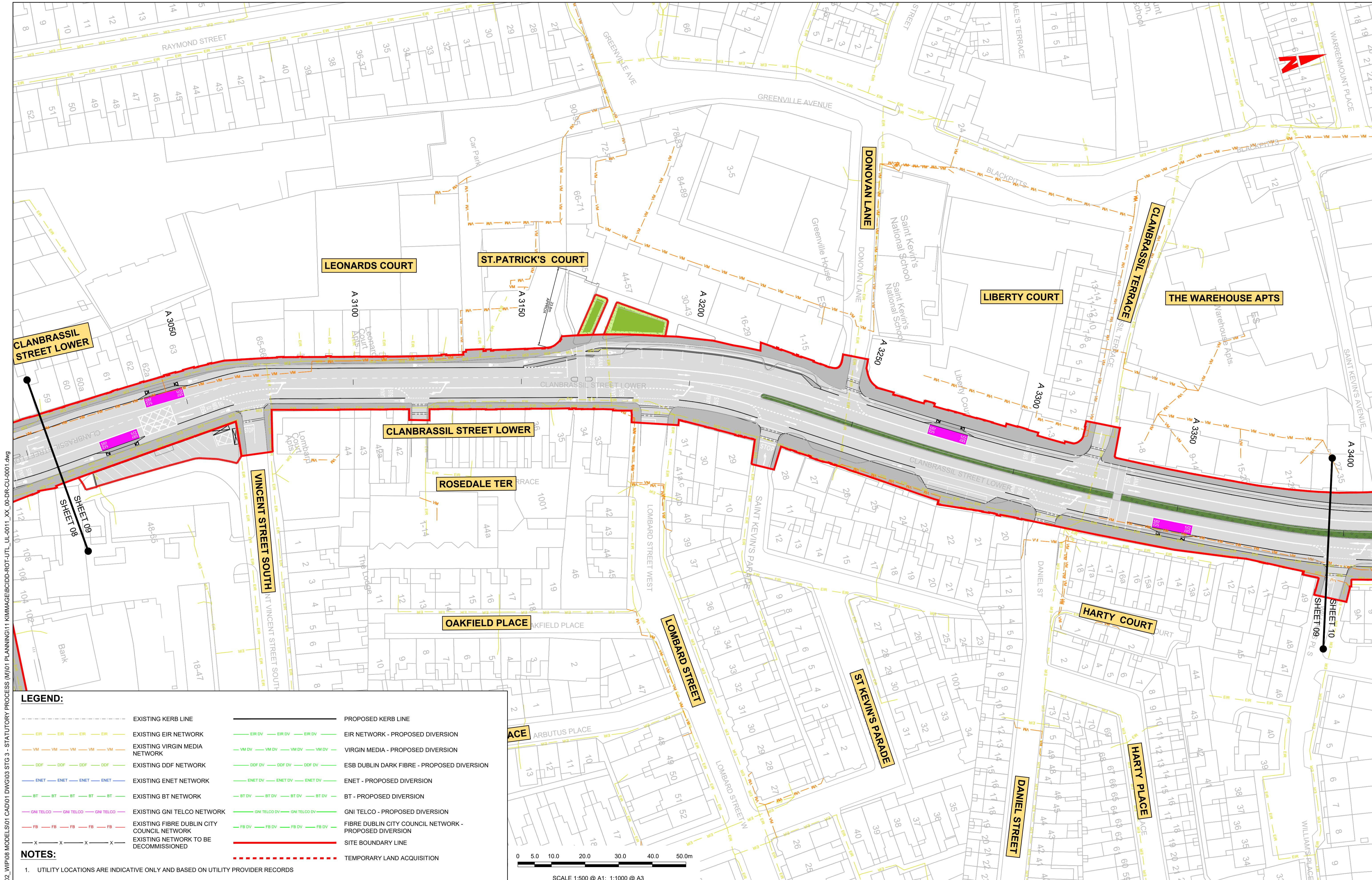
Client: **NTA**
 Údarás Náisiúnta Iompair
 National Transport Authority

Engineering Designer: **FIROD**
 TYPSA

Date: FEB 2023
 Scale: 1:500 @ A1, 1:1000 @ A3
 Drawn: DS, Checked: EE, Approved: SMG

Programme Code: BCIDD, Originator Code: ROT, QMS Code: [blank]

Programme Title				
BUSCONNECTS DUBLIN				
CORE BUS CORRIDORS INFRASTRUCTURE WORKS				
Drawing Title				
KIMMAGE TO CITY CENTRE CORE BUS CORRIDOR SCHEME TELECOMMUNICATIONS ASSET ALTERATIONS				
Drawing File Name				
BCIDD-ROT-UTL_UL-0011_XX_00-DR-CU-0008				
Sheet Number	Status	Rev		
08 of 14	A	M01		

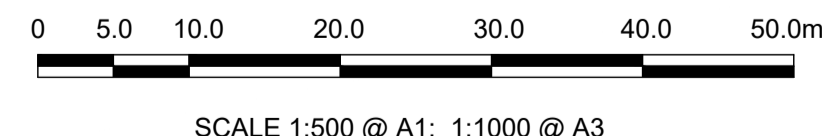


LEGEND:

	EXISTING KERB LINE		PROPOSED KERB LINE
	EXISTING EIR NETWORK		EIR NETWORK - PROPOSED DIVERSION
	EXISTING VIRGIN MEDIA NETWORK		VIRGIN MEDIA - PROPOSED DIVERSION
	EXISTING DDF NETWORK		ESB DUBLIN DARK FIBRE - PROPOSED DIVERSION
	EXISTING ENET NETWORK		ENET - PROPOSED DIVERSION
	EXISTING BT NETWORK		BT - PROPOSED DIVERSION
	EXISTING GNI TELCO NETWORK		GNI TELCO - PROPOSED DIVERSION
	EXISTING FIBRE DUBLIN CITY COUNCIL NETWORK		FIBRE DUBLIN CITY COUNCIL NETWORK - PROPOSED DIVERSION
	EXISTING NETWORK TO BE DECOMMISSIONED		SITE BOUNDARY LINE
			TEMPORARY LAND ACQUISITION

NOTES:

- UTILITY LOCATIONS ARE INDICATIVE ONLY AND BASED ON UTILITY PROVIDER RECORDS



Disclaimer

a. © National Transport Authority (NTA) 2022. This drawing is confidential and the copyright in it is owned by NTA. This drawing must not be either loaned, copied or otherwise reproduced in whole or in part or used for any purpose without the prior permission of NTA.

b. This drawing is to be used for the design element identified in the titlebox. Other information shown is to be considered indicative only. The drawing is to be read in conjunction with all other relevant design drawings.

c. O.S. data used for plans are printed under © Ordnance Survey Ireland Government of Ireland. All rights reserved. Licence Number 2022/OSI_NMA_180 National Transport Authority. All elevations are in metres and relate to OSI Geoid Model (OSGM15) Mean Head. All Co-ordinates are in Irish Transverse Mercator Grid (ITM) as defined by OSI active local GPS station.

d. Information concerning the position of apparatus shown on this drawing is based on drawings supplied by the utility owners and/or the utility works contractor, whilst every care has been taken in the preparation of this drawing, positions should be taken as approximate and are intended for general guidance only and no representation is made by the NTA as to the accuracy, completeness, sufficiency or otherwise of this drawing and the position of the apparatus. The information contained herein does not purport to be comprehensive or final as the apparatus is subject to being altered and/or superceded. Recipients should not rely on this information. Any liabilities are hereby expressly disclaimed.

e. The information contained herein has been provided by the NTA but does not purport to be comprehensive or final. Recipients should not rely on the information. Neither the NTA nor any of its directors, officers, employees, agents, stakeholders or advisers make any representation or warranty as to, or accept any liability or responsibility in relation to, the adequacy, accuracy, reasonableness or completeness of the information provided as part of this document or any matter on which the information is based (including but not limited to loss or damage arising as a result of reliance by recipients on the information or any part of it). Any liabilities are hereby expressly disclaimed.



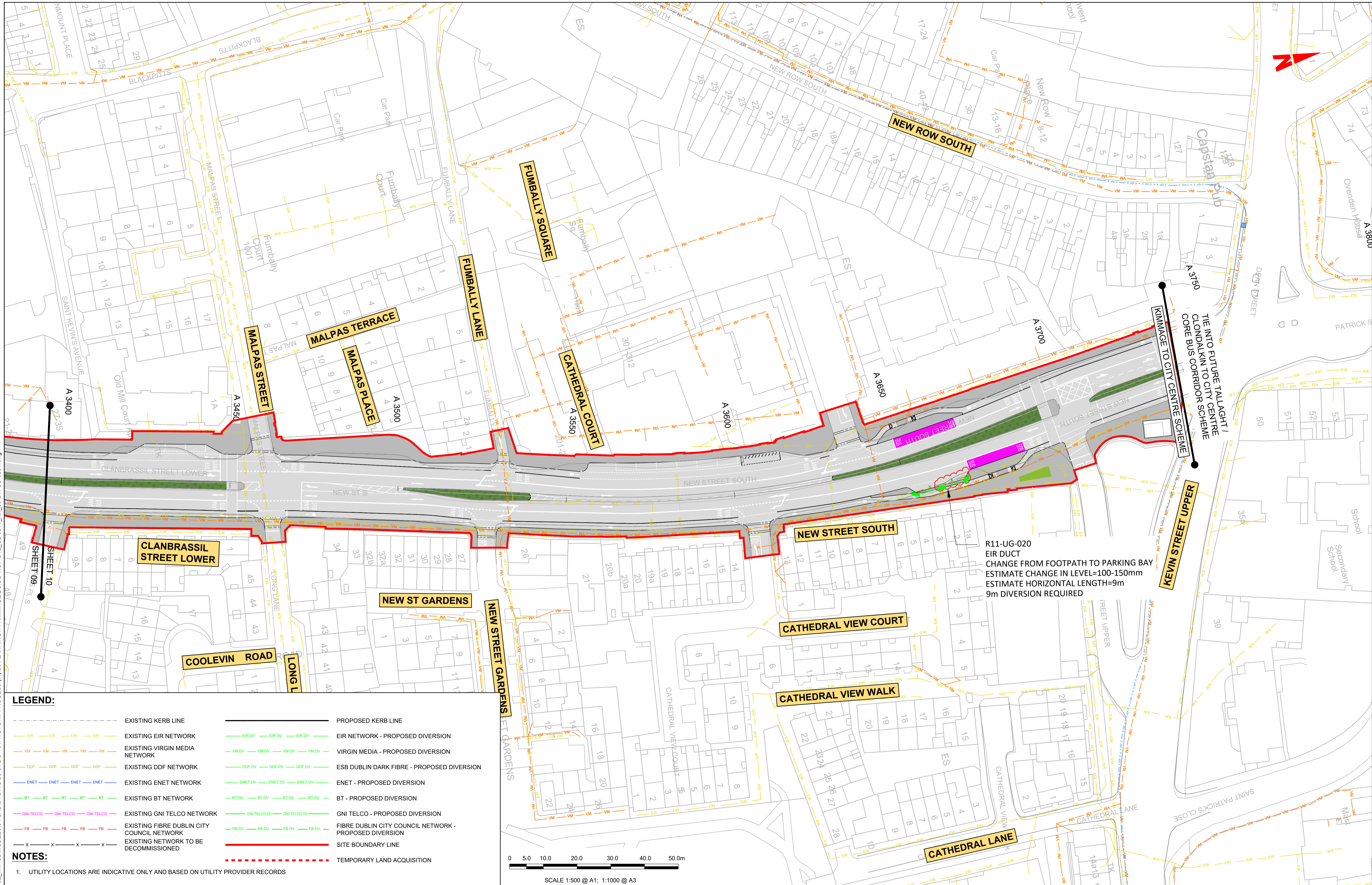
Rev	Date	Drn	Chk'd	App'd	Description
M01	FEB 2023	DS	LS	SMG	ISSUED FOR PHASE 4: PLANNING

Client NTA Údaráis Náisiúnta Iompair National Transport Authority		Engineering Designer PROD TYPSA		
Date FEB 2023	Scale 1:500 @ A1 1:1000 @ A3	Drawn DS	Checked EE	Approved SMG
Programme Code BCIDD	Originator Code ROT	QMS Code		

Programme Title BUSCONNECTS DUBLIN CORE BUS CORRIDORS INFRASTRUCTURE WORKS				
Drawing Title KIMMAGE TO CITY CENTRE CORE BUS CORRIDOR SCHEME TELECOMMUNICATIONS ASSET ALTERATIONS				
Drawing File Name BCIDD-ROT-UTL_UL-0011_XX_00-DR-CU-0009	Sheet Number 09 of 14	Status A	Rev M01	

DO NOT SCALE USE FIGURED DIMENSIONS ONLY

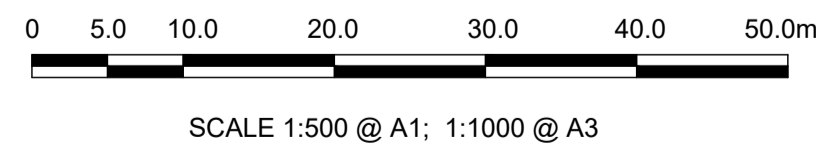
\\produbp1\j2019\191717-02_WIP08 MODELS\01 CAD\01 PLANNING\11 KIMMAGE\BCIDD-ROT-UTL_UL-0011_XX_00-DR-CU-0001.dwg



LEGEND:

---	EXISTING KERB LINE	---	PROPOSED KERB LINE
---	EXISTING EIR NETWORK	---	EIR NETWORK - PROPOSED DIVERSION
---	EXISTING VIRGIN MEDIA NETWORK	---	VIRGIN MEDIA - PROPOSED DIVERSION
---	EXISTING DDF NETWORK	---	ESB DUBLIN DARK FIBRE - PROPOSED DIVERSION
---	EXISTING ENET NETWORK	---	ENET - PROPOSED DIVERSION
---	EXISTING BT NETWORK	---	BT - PROPOSED DIVERSION
---	EXISTING GNI TELCO NETWORK	---	GNI TELCO - PROPOSED DIVERSION
---	EXISTING FIBRE DUBLIN CITY COUNCIL NETWORK	---	FIBRE DUBLIN CITY COUNCIL NETWORK - PROPOSED DIVERSION
---	EXISTING NETWORK TO BE DECOMMISSIONED	---	SITE BOUNDARY LINE
---		---	TEMPORARY LAND ACQUISITION

NOTES:
 1. UTILITY LOCATIONS ARE INDICATIVE ONLY AND BASED ON UTILITY PROVIDER RECORDS



Disclaimer:
 a. © National Transport Authority (NTA) 2022. This drawing is confidential and the copyright in it is owned by NTA. This drawing must not be either loaned, copied or otherwise reproduced in whole or in part or used for any purpose without the prior permission of NTA.
 b. This drawing is to be used for the design element identified in the title block. Other information shown is to be considered indicative only. The drawing is to be read in conjunction with all other relevant design drawings.
 c. O.S. data used for plans are printed under © Ordnance Survey Ireland Government of Ireland. All rights reserved. Licence Number 2022/O.SI_NMA_180 National Transport Authority. All elevations are in metres and relate to OSi Grid Model (OSGM15) Mean Head. All Co-ordinates are in Irish Transverse Mercator Grid (ITM) as defined by OSi active local GPS station.
 d. Information concerning the position of apparatus shown on this drawing is based on drawings supplied by the utility owners and/or the utility works contractor, whilst every care has been taken in the preparation of this drawing, positions should be taken as approximate and are intended for general guidance only and no representation is made by the NTA as to the accuracy, completeness, sufficiency or otherwise of this drawing and the position of the apparatus. The information contained herein does not purport to be comprehensive or final as the apparatus is subject to being altered and/or superceded. Recipients should not rely on this information. Any liabilities are hereby expressly disclaimed.



Rev	Date	Drm	Chk'd	App'd	Description
M01	FEB 2023	DS	LS	SMG	ISSUED FOR PHASE 4: PLANNING

Client NTA Údarás Náisiúnta Iompair National Transport Authority		Engineering Designer CIROD TYPSA		
Date FEB 2023	Scale 1:500 @ A1 1:1000 @ A3	Drawn DS	Checked EE	Approved SMG
Programme Code BCIDD	Originator Code ROT	QMS Code		

Programme Title BUSCONNECTS DUBLIN CORE BUS CORRIDORS INFRASTRUCTURE WORKS	
Drawing Title KIMMAGE TO CITY CENTRE CORE BUS CORRIDOR SCHEME TELECOMMUNICATIONS ASSET ALTERATIONS	
Drawing File Name BCIDD-ROT-UTL_UL-0011_XX_00-DR-CU-0010	Sheet Number 10 of 14
Status A	Rev M01

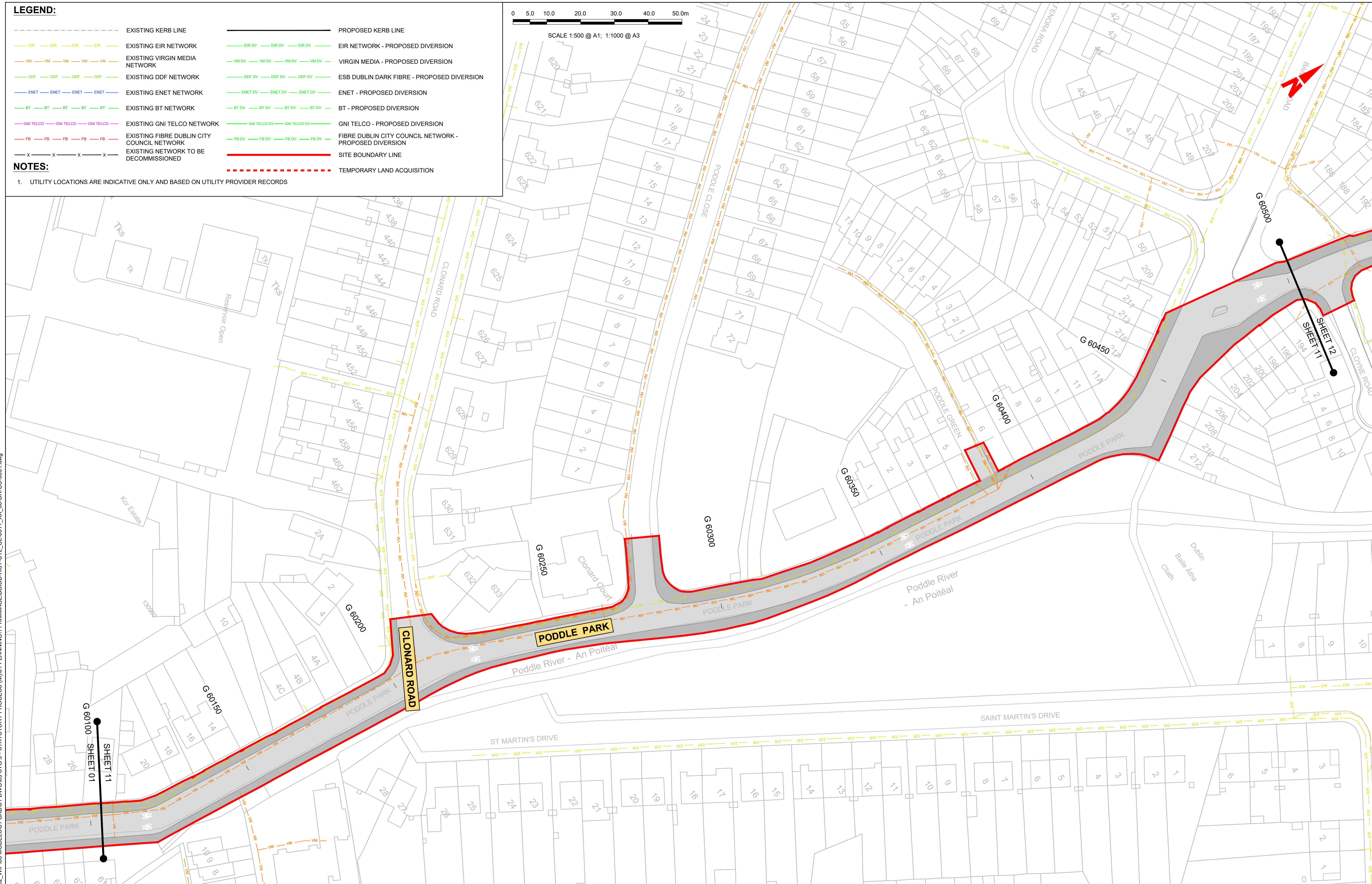
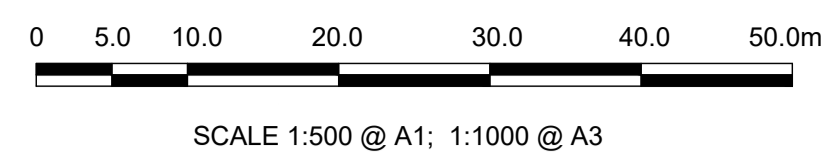
DO NOT SCALE USE FIGURED DIMENSIONS ONLY

LEGEND:

	EXISTING KERB LINE		PROPOSED KERB LINE
	EXISTING EIR NETWORK		EIR NETWORK - PROPOSED DIVERSION
	EXISTING VIRGIN MEDIA NETWORK		VIRGIN MEDIA - PROPOSED DIVERSION
	EXISTING DDF NETWORK		ESB DUBLIN DARK FIBRE - PROPOSED DIVERSION
	EXISTING ENET NETWORK		ENET - PROPOSED DIVERSION
	EXISTING BT NETWORK		BT - PROPOSED DIVERSION
	EXISTING GNI TELCO NETWORK		GNI TELCO - PROPOSED DIVERSION
	EXISTING FIBRE DUBLIN CITY COUNCIL NETWORK		FIBRE DUBLIN CITY COUNCIL NETWORK - PROPOSED DIVERSION
	EXISTING NETWORK TO BE DECOMMISSIONED		SITE BOUNDARY LINE
			TEMPORARY LAND ACQUISITION

NOTES:

1. UTILITY LOCATIONS ARE INDICATIVE ONLY AND BASED ON UTILITY PROVIDER RECORDS



\\oddbp1u201917171717-02_WIP08 MODELS01 CAD01 DWG03 STG 3 - STATUTORY PROCESS (M)01 PLANNING11 KIMMAGEBCIDD-ROT-UTL_UL-0011_XX_00-DR-CU-0001.dwg

Disclaimer
 a. © National Transport Authority (NTA) 2022. This drawing is confidential and the copyright in it is owned by NTA. This drawing must not be either loaned, copied or otherwise reproduced in whole or in part or used for any purpose without the prior permission of NTA.
 b. This drawing is to be used for the design element identified in the titleblock. Other information shown is to be considered indicative only. The drawing is to be read in conjunction with all other relevant design drawings.
 c. O.S. data used for plans are printed under © Ordnance Survey Ireland Government of Ireland. All rights reserved. Licence Number 2022/OSI_NMA_180 National Transport Authority. All elevations are in metres and relate to OSI Grid Model (OSGM15) Mean Head. All Co-ordinates are in Irish Transverse Mercator Grid (ITM) as defined by OSI active local GPS station.
 d. Information concerning the position of apparatus shown on this drawing is based on drawings supplied by the utility owners and/or the utility works contractor, whilst every care has been taken in the preparation of this drawing, positions should be taken as approximate and are intended for general guidance only and no representation is made by the NTA as to the accuracy, completeness, sufficiency or otherwise of this drawing and the position of the apparatus. The information contained herein does not purport to be comprehensive or final as the apparatus is subject to being altered and/or superceded. Recipients should not rely on this information. Any liabilities are hereby expressly disclaimed.
 e. The information contained herein has been provided by the NTA but does not purport to be comprehensive or final. Recipients should not rely on the information. Neither the NTA nor any of its directors, officers, employees, agents, stakeholders or advisers make any representation or warranty as to, or accept any liability or responsibility in relation to, the adequacy, accuracy, reasonableness or completeness of the information provided as part of this document or any matter on which the information is based (including but not limited to loss or damage arising as a result of reliance by recipients on the information or any part of it). Any liabilities are hereby expressly disclaimed.

Rev	Date	Drn	Chk'd	App'd	Description
M01	FEB 2023	DS	LS	SMG	ISSUED FOR PHASE 4: PLANNING

Client: **NTA**
 Údarás Náisiúnta Iompair
 National Transport Authority

Engineering Designer: **CIROD**
 TYPSA

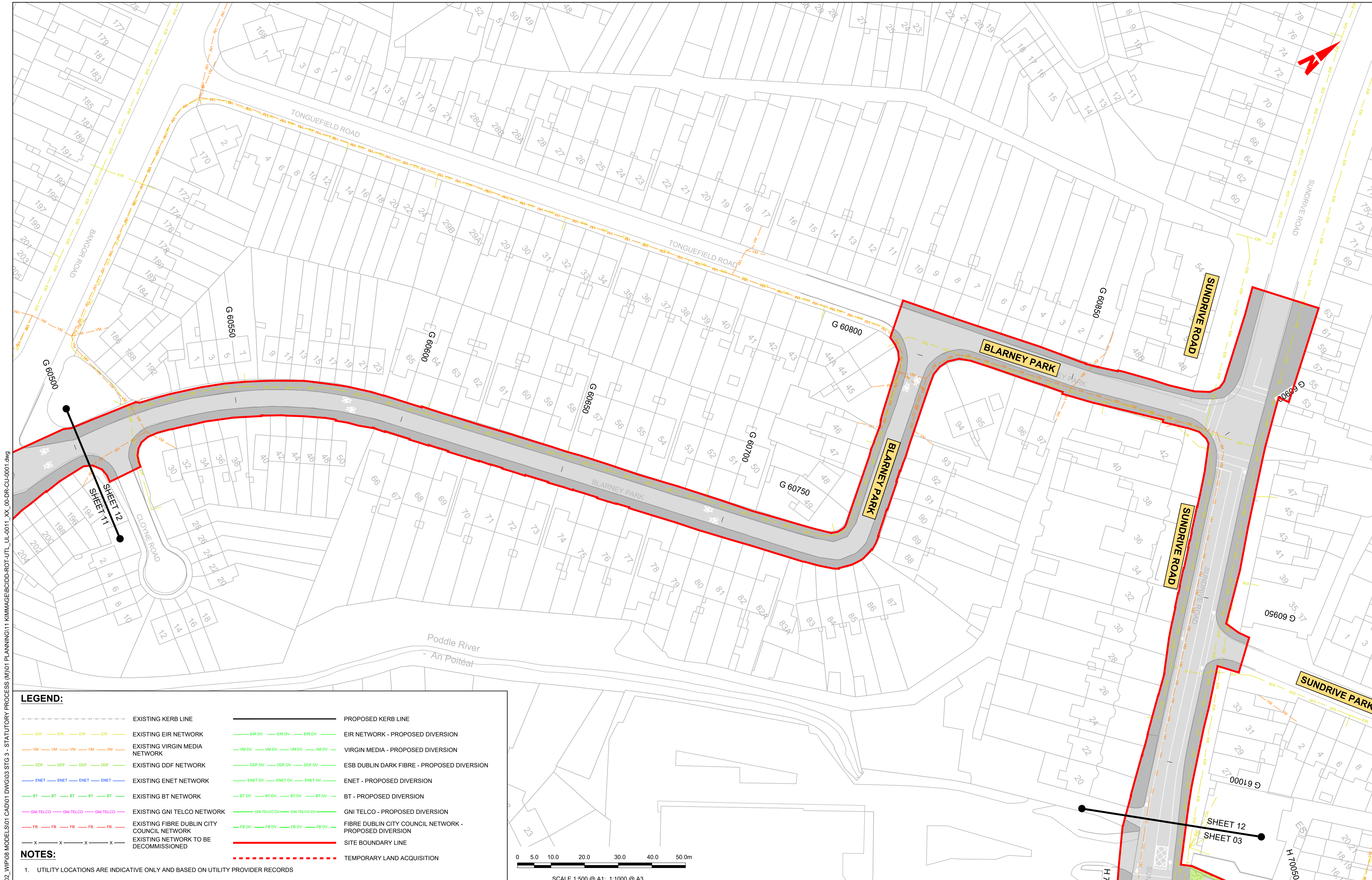
Date: FEB 2023
 Scale: 1:500 @ A1
 1:1000 @ A3

Drawn: DS
 Checked: EE
 Approved: SMG

Programme Code: BCIDD
 Originator Code: ROT
 QMS Code:

Programme Title BUSCONNECTS DUBLIN CORE BUS CORRIDORS INFRASTRUCTURE WORKS			
Drawing Title KIMMAGE TO CITY CENTRE CORE BUS CORRIDOR SCHEME TELECOMMUNICATIONS ASSET ALTERATIONS			
Drawing File Name BCIDD-ROT-UTL_UL-0011_XX_00-DR-CU-0011	Sheet Number 11 of 14	Status A	Rev M01

DO NOT SCALE USE FIGURED DIMENSIONS ONLY

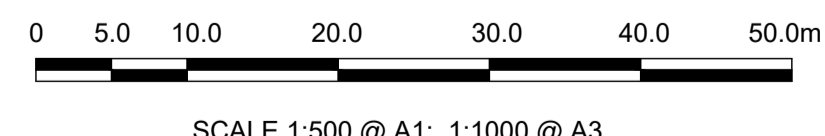


LEGEND:

---	EXISTING KERB LINE	---	PROPOSED KERB LINE
---	EXISTING EIR NETWORK	---	EIR NETWORK - PROPOSED DIVERSION
---	EXISTING VIRGIN MEDIA NETWORK	---	VIRGIN MEDIA - PROPOSED DIVERSION
---	EXISTING DDF NETWORK	---	ESB DUBLIN DARK FIBRE - PROPOSED DIVERSION
---	EXISTING ENET NETWORK	---	ENET - PROPOSED DIVERSION
---	EXISTING BT NETWORK	---	BT - PROPOSED DIVERSION
---	EXISTING GNI TELCO NETWORK	---	GNI TELCO - PROPOSED DIVERSION
---	EXISTING FIBRE DUBLIN CITY COUNCIL NETWORK	---	FIBRE DUBLIN CITY COUNCIL NETWORK - PROPOSED DIVERSION
---	EXISTING NETWORK TO BE DECOMMISSIONED	---	SITE BOUNDARY LINE
---		---	TEMPORARY LAND ACQUISITION

NOTES:

- UTILITY LOCATIONS ARE INDICATIVE ONLY AND BASED ON UTILITY PROVIDER RECORDS



Disclaimer

a. © National Transport Authority (NTA) 2022. This drawing is confidential and the copyright in it is owned by NTA. This drawing must not be either loaned, copied or otherwise reproduced in whole or in part or used for any purpose without the prior permission of NTA.

b. This drawing is to be used for the design element identified in the titleblock. Other information shown is to be considered indicative only. The drawing is to be read in conjunction with all other relevant design drawings.

c. O.S. data used for plans are printed under © Ordnance Survey Ireland Government of Ireland. All rights reserved. Licence Number 2022/OSI_NMA_180 National Transport Authority. All elevations are in metres and relate to OSI Geoid Model (OSGM15) Mean Head. All Co-ordinates are in Irish Transverse Mercator Grid (ITM) as defined by OSI active local GPS station.

d. Information concerning the position of apparatus shown on this drawing is based on drawings supplied by the utility owners and/or the utility works contractor, whilst every care has been taken in the preparation of this drawing, positions should be taken as approximate and are intended for general guidance only and no representation is made by the NTA as to the accuracy, completeness, sufficiency or otherwise of this information. The information contained herein does not purport to be comprehensive or final as the apparatus is subject to being altered and/or superseded. Recipients should not rely on this information. Any liabilities are hereby expressly disclaimed.

e. The information contained herein has been provided by the NTA but does not purport to be comprehensive or final. Recipients should not rely on the information. Neither the NTA nor any of its directors, officers, employees, agents, stakeholders or advisers make any representation or warranty as to, or accept any liability or responsibility in relation to, the adequacy, accuracy, reasonableness or completeness of the information provided as part of this document or any matter on which the information is based (including but not limited to loss or damage arising as a result of reliance by recipients on the information or any part of it). Any liabilities are hereby expressly disclaimed.



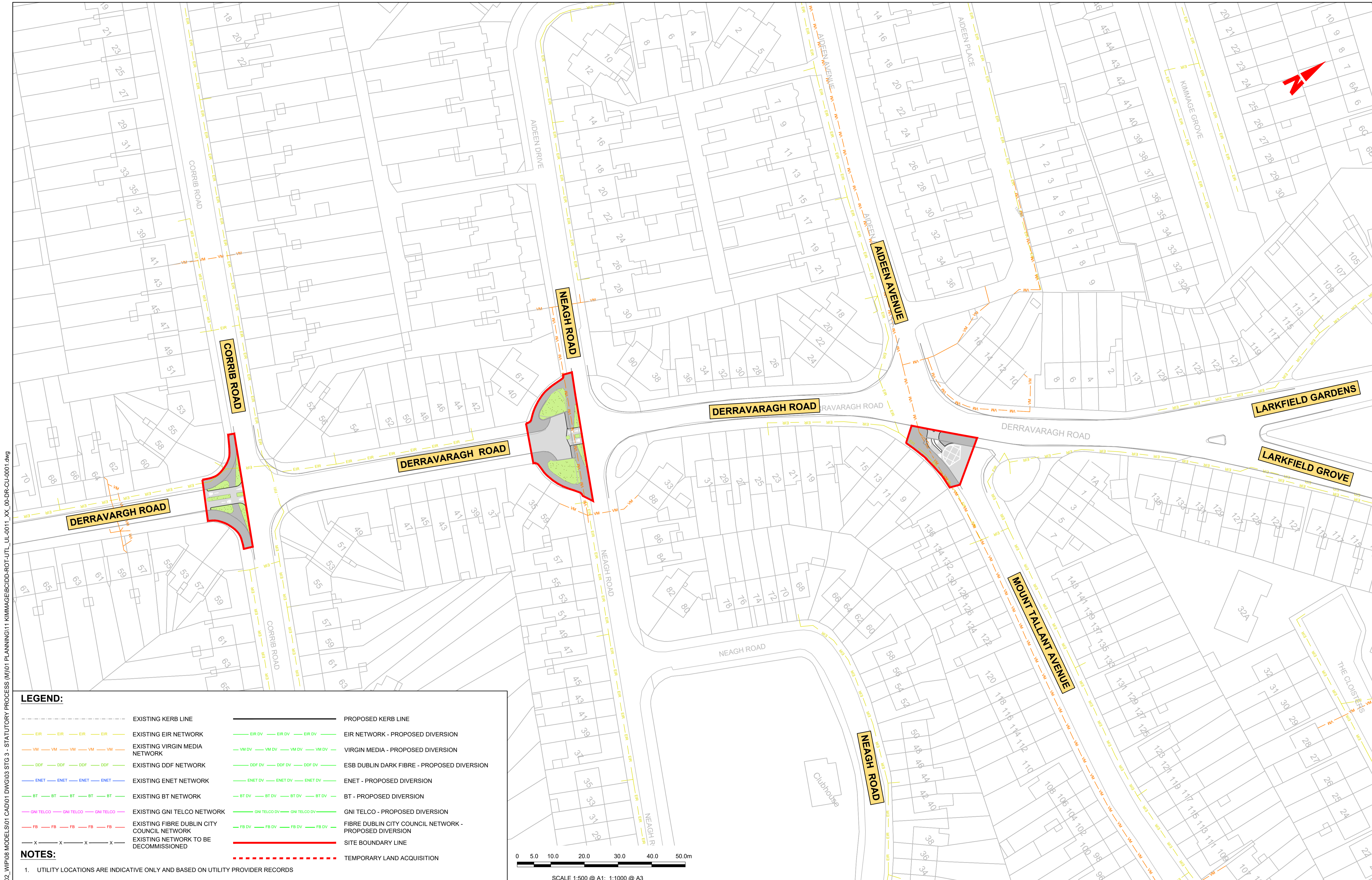
Rev	Date	Drn	Chk'd	App'd	Description
M01	FEB 2023	DS	LS	SMG	ISSUED FOR PHASE 4: PLANNING

Client NTA Udarás Náisiúnta Iompair National Transport Authority		Engineering Designer CIROD TYPSA		
Date FEB 2023	Scale 1:500 @ A1 1:1000 @ A3	Drawn DS	Checked EE	Approved SMG
Programme Code BCIDD	Originator Code ROT	QMS Code		

Programme Title BUSCONNECTS DUBLIN CORE BUS CORRIDORS INFRASTRUCTURE WORKS				
Drawing Title KIMMAGE TO CITY CENTRE CORE BUS CORRIDOR SCHEME TELECOMMUNICATIONS ASSET ALTERATIONS				
Drawing File Name BCIDD-ROT-UTL_UL-0011_XX_00-DR-CU-0012	Sheet Number 12 of 14	Status A	Rev M01	

DO NOT SCALE USE FIGURED DIMENSIONS ONLY

\\produbp1\U201919\17119117-02_WIP008 MODELS\01 CAD\01 DWG\03 STG 3 - STATUTORY PROCESS (M)\01 PLANNING\11 KIMMAGE\BCIDD-ROT-UTL_UL-0011_XX_00-DR-CU-0001.dwg

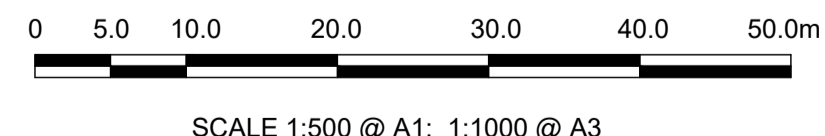


LEGEND:

	EXISTING KERB LINE		PROPOSED KERB LINE
	EXISTING EIR NETWORK		EIR NETWORK - PROPOSED DIVERSION
	EXISTING VIRGIN MEDIA NETWORK		VIRGIN MEDIA - PROPOSED DIVERSION
	EXISTING DDF NETWORK		ESB DUBLIN DARK FIBRE - PROPOSED DIVERSION
	EXISTING ENET NETWORK		ENET - PROPOSED DIVERSION
	EXISTING BT NETWORK		BT - PROPOSED DIVERSION
	EXISTING GNI TELCO NETWORK		GNI TELCO - PROPOSED DIVERSION
	EXISTING FIBRE DUBLIN CITY COUNCIL NETWORK		FIBRE DUBLIN CITY COUNCIL NETWORK - PROPOSED DIVERSION
	EXISTING NETWORK TO BE DECOMMISSIONED		SITE BOUNDARY LINE
			TEMPORARY LAND ACQUISITION

NOTES:

- UTILITY LOCATIONS ARE INDICATIVE ONLY AND BASED ON UTILITY PROVIDER RECORDS



Disclaimer

a. © National Transport Authority (NTA) 2022. This drawing is confidential and the copyright in it is owned by NTA. This drawing must not be either loaned, copied or otherwise reproduced in whole or in part or used for any purpose without the prior permission of NTA.

b. This drawing is to be used for the design element identified in the titleblock. Other information shown is to be considered indicative only. The drawing is to be read in conjunction with all other relevant design drawings.

c. O.S. data used for plans are printed under © Ordnance Survey Ireland Government of Ireland. All rights reserved. Licence Number 2022/OSI_NMA_180 National Transport Authority. All elevations are in metres and relate to OSI Geoid Model (OSGM15) Mean Head. All Co-ordinates are in Irish Transverse Mercator Grid (ITM) as defined by OSI active local GPS station.

d. Information concerning the position of apparatus shown on this drawing is based on drawings supplied by the utility owners and/or the utility works contractor, whilst every care has been taken in the preparation of this drawing, positions should be taken as approximate and are intended for general guidance only and no representation is made by the NTA as to the accuracy, completeness, sufficiency or otherwise of this drawing and the position of the apparatus. The information contained herein does not purport to be comprehensive or final as the apparatus is subject to being altered and/or superseded. Recipients should not rely on this information. Any liabilities are hereby expressly disclaimed.

e. The information contained herein has been provided by the NTA but does not purport to be comprehensive or final. Recipients should not rely on the information. Neither the NTA nor any of its directors, officers, employees, agents, stakeholders or advisers make any representation or warranty as to, or accept any liability or responsibility in relation to, the adequacy, accuracy, reasonableness or completeness of the information provided as part of this document or any matter on which the information is based (including but not limited to loss or damage arising as a result of reliance by recipients on the information or any part of it). Any liabilities are hereby expressly disclaimed.



Rev	Date	Drn	Chk'd	App'd	Description
M01	FEB 2023	DS	LS	SMG	ISSUED FOR PHASE 4: PLANNING

Client

Udaráis Náisiúnta Iompair
National Transport Authority

Engineering Designer

Drawn DS
Checked EE
Approved SMG

Programme Title
**BUSCONNECTS DUBLIN
CORE BUS CORRIDORS INFRASTRUCTURE WORKS**

Drawing Title
KIMMAGE TO CITY CENTRE CORE BUS CORRIDOR SCHEME
TELECOMMUNICATIONS ASSET ALTERATIONS

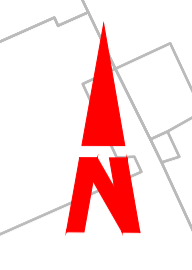
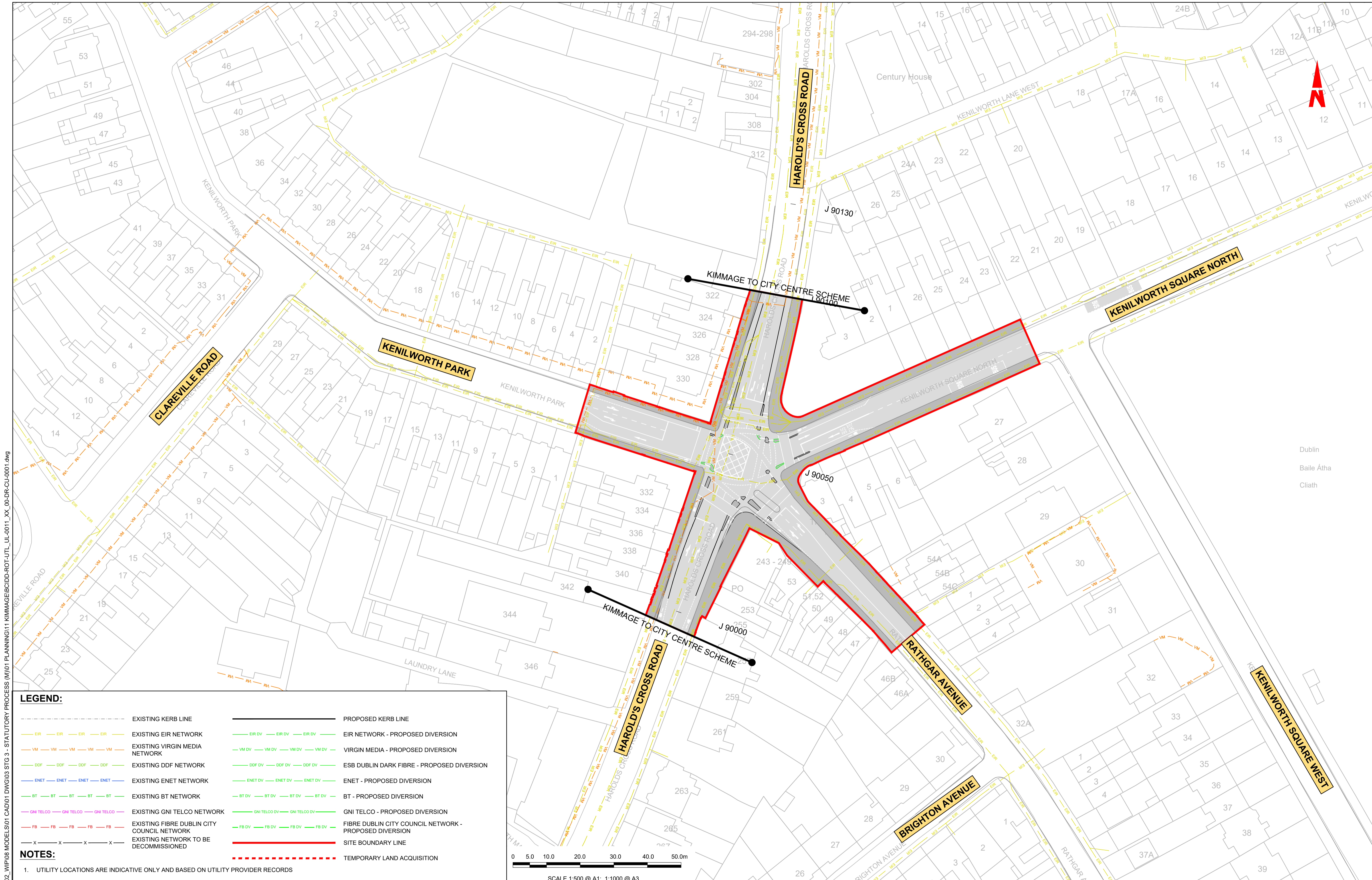
Drawing File Name
BCIDD-ROT-UTL_UL-0011_XX_00-DR-CU-0013

Sheet Number
13 of 14

Status
A

Rev
M01

DO NOT SCALE USE FIGURED DIMENSIONS ONLY



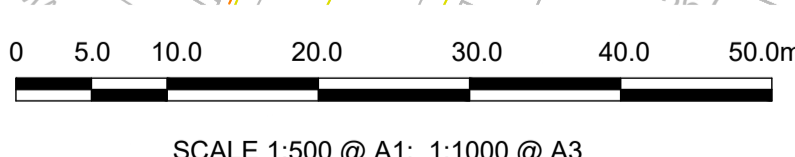
Dublin
Baile Átha
Cliath

LEGEND:

--- EXISTING KERB LINE	--- PROPOSED KERB LINE
--- EXISTING EIR NETWORK	--- EIR NETWORK - PROPOSED DIVERSION
--- EXISTING VIRGIN MEDIA NETWORK	--- VIRGIN MEDIA - PROPOSED DIVERSION
--- EXISTING DDF NETWORK	--- ESB DUBLIN DARK FIBRE - PROPOSED DIVERSION
--- EXISTING ENET NETWORK	--- ENET - PROPOSED DIVERSION
--- EXISTING BT NETWORK	--- BT - PROPOSED DIVERSION
--- EXISTING GNI TELCO NETWORK	--- GNI TELCO - PROPOSED DIVERSION
--- EXISTING FIBRE DUBLIN CITY COUNCIL NETWORK	--- FIBRE DUBLIN CITY COUNCIL NETWORK - PROPOSED DIVERSION
--- EXISTING NETWORK TO BE DECOMMISSIONED	--- SITE BOUNDARY LINE
	--- TEMPORARY LAND ACQUISITION

NOTES:

1. UTILITY LOCATIONS ARE INDICATIVE ONLY AND BASED ON UTILITY PROVIDER RECORDS



Disclaimer

a. © National Transport Authority (NTA) 2022. This drawing is confidential and the copyright in it is owned by NTA. This drawing must not be either loaned, copied or otherwise reproduced in whole or in part or used for any purpose without the prior permission of NTA.

b. This drawing is to be used for the design element identified in the titleblock. Other information shown is to be considered indicative only. The drawing is to be read in conjunction with all other relevant design drawings.

c. O.S. data used for plans are printed under © Ordnance Survey Ireland Government of Ireland. All rights reserved. Licence Number 2022/OSI_NMA_180 National Transport Authority. All elevations are in metres and relate to OSI Geoid Model (OSGM15) Mean Head. All Co-ordinates are in Irish Transverse Mercator Grid (ITM) as defined by OSI active local GPS station.

d. Information concerning the position of apparatus shown on this drawing is based on drawings supplied by the utility owners and/or the utility works contractor, whilst every care has been taken in the preparation of this drawing, positions should be taken as approximate and are intended for general guidance only and no representation is made by the NTA as to the accuracy, completeness, sufficiency or otherwise of this drawing and the position of the apparatus. The information contained herein does not purport to be comprehensive or final as the apparatus is subject to being altered and/or superseded. Recipients should not rely on this information. Any liabilities are hereby expressly disclaimed.

e. The information contained herein has been provided by the NTA but does not purport to be comprehensive or final. Recipients should not rely on the information. Neither the NTA nor any of its directors, officers, employees, agents, stakeholders or advisers make any representation or warranty as to, or accept any liability or responsibility in relation to, the adequacy, accuracy, reasonableness or completeness of the information provided as part of this document or any matter on which the information is based (including but not limited to loss or damage arising as a result of reliance by recipients on the information or any part of it). Any liabilities are hereby expressly disclaimed.

Rev	Date	Drm	Chk'd	App'd	Description
M01	FEB 2023	DS	LS	SMG	ISSUED FOR PHASE 4: PLANNING

Client: **NTA**
Udarás Náisiúnta Iompair
National Transport Authority

Engineering Designer: **CIROD**
TYPSA

Date: FEB 2023
Scale: 1:500 @ A1
1:1000 @ A3

Programme Code: BCIDD
Originator Code: ROT

Drawn: DS
Checked: EE
Approved: SMG

QMS Code

Programme Title BUSCONNECTS DUBLIN CORE BUS CORRIDORS INFRASTRUCTURE WORKS			
Drawing Title KIMMAGE TO CITY CENTRE CORE BUS CORRIDOR SCHEME TELECOMMUNICATIONS ASSET ALTERATIONS			
Drawing File Name BCIDD-ROT-UTL_UL-0011_XX_00-DR-CU-0014	Sheet Number 14 of 14	Status A	Rev M01

DO NOT SCALE USE FIGURED DIMENSIONS ONLY

\\woodhup1\j2019\191717\17-02_WIP08 MODELS\01 CAD\01 DWG\03 STG 3 - STATUTORY PROCESS (M)\01 PLANNING\11 KIMMAGE\BCIDD-ROT-UTL_UL-0011_XX_00-DR-CU-0001.dwg