

Street Lighting





# BUSCONNECTS DUBLIN CORE BUS CORRIDORS INFRASTRUCTURE WORKS

## KIMMAGE TO CITY CENTRE CORE BUS CORRIDOR SCHEME

### PUBLIC LIGHTING

#### DRAWING SERIES NUMBER(S)

BDIDD-ROT-LHT\_IX-0011\_XX\_00-DR-EO-0001  
 BCIDD-ROT-LHT\_KP-0011\_XX\_00-DR-EO-0001  
 BCIDD-ROT-LHT\_RL-0011\_XX\_00-DR-EO-0001 to 0014

#### DRAWING SERIES DESCRIPTION

KIMMAGE TO CITY CENTRE CORE BUS CORRIDOR SCHEME. PUBLIC LIGHTING. COVER SHEET  
 KIMMAGE TO CITY CENTRE CORE BUS CORRIDOR SCHEME. PUBLIC LIGHTING. KEY PLAN  
 KIMMAGE TO CITY CENTRE CORE BUS CORRIDOR SCHEME. PUBLIC LIGHTING LAYOUT. DRAWINGS

\\wddubp1u20191917117117-02\_WIP08 MODELS01 CAD01 DWG03 STG 3 - STATUTORY PROCESS (M)01 PLANNING11 KIMMAGECOVER SHEETSBCIDD-ROT-LHT\_IX-0011\_XX\_00-DR-EO-0001.dwg

**Disclaimer**  
 a. © National Transport Authority (NTA) 2022. This drawing is confidential and the copyright in it is owned by NTA. This drawing must not be either loaned, copied or otherwise reproduced in whole or in part or used for any purpose without the prior permission of NTA.  
 b. This drawing is to be used for the design element identified in the titleblock. Other information shown is to be considered indicative only. The drawing is to be read in conjunction with all other relevant design drawings.  
 c. O.S. data used for plans are printed under © Ordnance Survey Ireland Government of Ireland. All rights reserved. Licence Number 2022/OSI\_NMA\_180 National Transport Authority. All elevations are in metres and relate to OSI Geoid Model (OSGM15) Mean Head. All Co-ordinates are in Irish Transverse Mercator Grid (ITM) as defined by OSI active local GPS station.  
 d. Information concerning the position of apparatus shown on this drawing is based on drawings supplied by the utility owners and/or the utility works contractor, whilst every care has been taken in the preparation of this drawing, positions should be taken as approximate and are intended for general guidance only and no representation is made by the NTA as to the accuracy, completeness, sufficiency or otherwise of this drawing and the position of the apparatus. The information contained herein does not purport to be comprehensive or final as the apparatus is subject to being altered and/or superceded. Recipients should not rely on this information. Any liabilities are hereby expressly disclaimed.  
 e. The information contained herein has been provided by the NTA but does not purport to be comprehensive or final. Recipients should not rely on the information. Neither the NTA nor any of its directors, officers, employees, agents, stakeholders or advisers make any representation or warranty as to, or accept any liability or responsibility in relation to, the adequacy, accuracy, reasonableness or completeness of the information provided as part of this document or any matter on which the information is based (including but not limited to loss or damage arising as a result of reliance by recipients on the information or any part of it). Any liabilities are hereby expressly disclaimed.

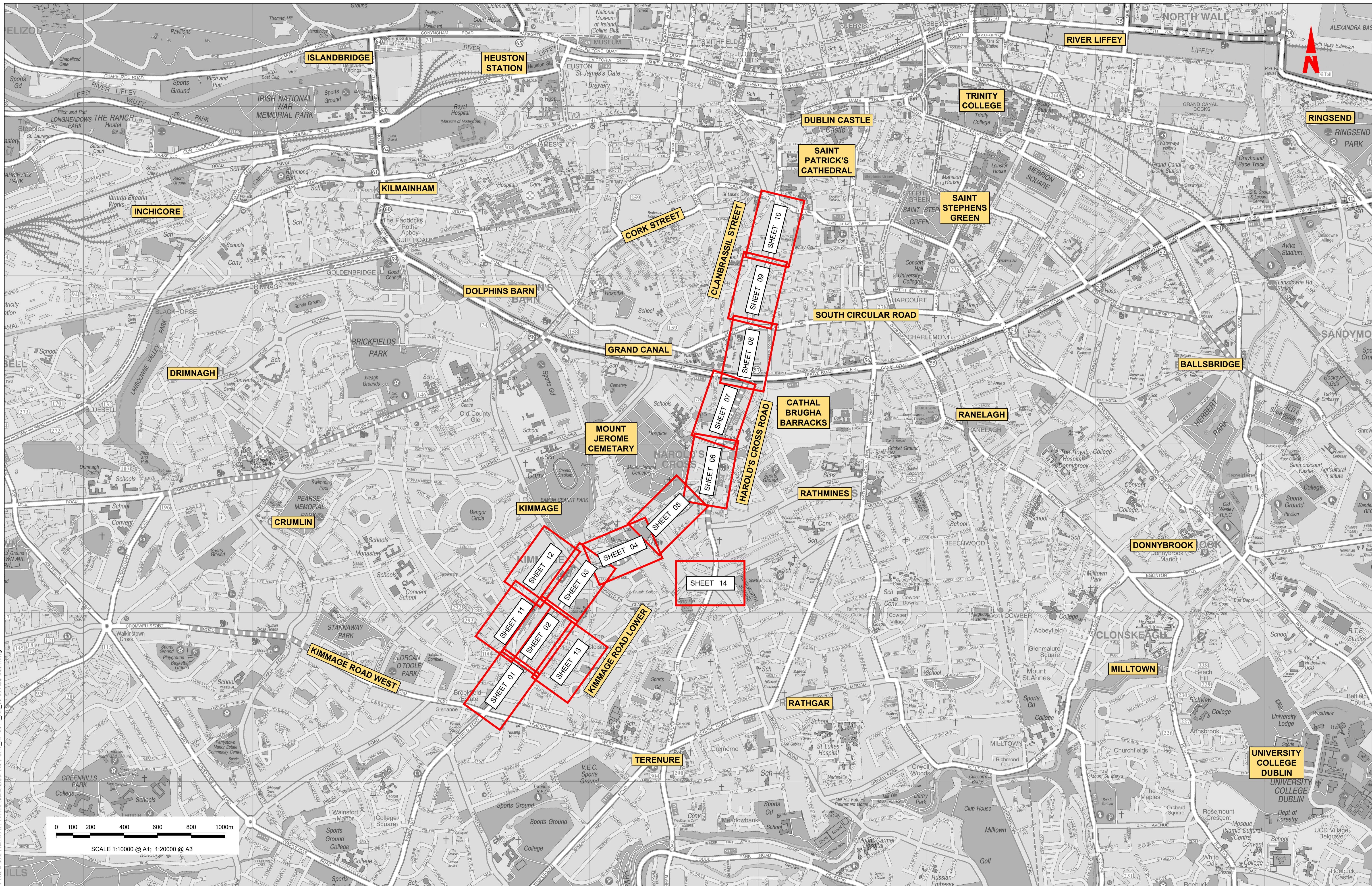


Rev	Date	Drm	Chk'd	App'd	Description
M01	FEB 2023	CG	SMG	SMG	ISSUE FOR PHASE 4: PLANNING

Client <b>NTA</b> Údarás Náisiúnta Iompair National Transport Authority		Engineering Designer <b>ROD</b> RUGHAN & O'DONOVAN TYPSA		
Date FEB 2023	Scale NTS @ A1 NTS @ A3	Drawn CG	Checked SMG	Approved SMG
Programme Code BCIDD	Originator Code ROT	QMS Code		

Programme Title <b>BUSCONNECTS DUBLIN CORE BUS CORRIDORS INFRASTRUCTURE WORKS</b>			
Drawing Title KIMMAGE TO CITY CENTRE CORE BUS CORRIDOR SCHEME PUBLIC LIGHTING COVER SHEET			
Drawing File Name BCIDD-ROT-LHT_IX-0011_XX_00-DR-EO-0001	Sheet Number 01 of 01	Status A	Rev M01

DO NOT SCALE USE FIGURED DIMENSIONS ONLY



W:\projects\2022\OSI\_NMA\_180\National Transport Authority\BCIDD-ROT-LHT\_KP-0011\_XX\_00-DR-EO-0001.dwg  
 Project: W:\projects\2022\OSI\_NMA\_180\National Transport Authority\BCIDD-ROT-LHT\_KP-0011\_XX\_00-DR-EO-0001.dwg  
 Date: 2023-02-03 10:00:00  
 User: JBB

0 100 200 400 600 800 1000m  
 SCALE 1:10000 @ A1; 1:20000 @ A3

Disclaimer  
 a. © National Transport Authority (NTA) 2022. This drawing is confidential and the copyright in it is owned by NTA. This drawing must not be either loaned, copied or otherwise reproduced in whole or in part or used for any purpose without the prior permission of NTA.  
 b. This drawing is to be used for the design element identified in the titleblock. Other information shown is to be considered indicative only. The drawing is to be read in conjunction with all other relevant design drawings.  
 c. OS data used for plans are printed under © Ordnance Survey Ireland Government of Ireland. All rights reserved. Licence Number 2022/OSI\_NMA\_180 National Transport Authority. All elevations are in metres and relate to OSI Geoid Model (OSGM15) Mean Head. All Co-ordinates are in Irish Transverse Mercator Grid (ITM) as defined by OSI active local GPS station.  
 d. Information concerning the position of apparatus shown on this drawing is based on drawings supplied by the utility owners and/or the utility works contractor, whilst every care has been taken in the preparation of this drawing, positions should be taken as approximate and are intended for general guidance only and no representation is made by the NTA as to the accuracy, completeness, sufficiency or otherwise of this drawing and the position of the apparatus. The information contained herein does not purport to be comprehensive or final as the apparatus is subject to being altered and/or superseded. Recipients should not rely on this information. Any liabilities are hereby expressly disclaimed.

Rev	Date	Drn	Chk'd	App'd	Description
M01	FEB 2023	JBB	EFD	SMG	ISSUE FOR PHASE 4: PLANNING

Building Ireland's Future

Client: **NTA**  
 Údarás Náisiúnta Iompair  
 National Transport Authority

Engineering Designer: **IROD**  
 TDSPSA

Programme Title: **BUSCONNECTS DUBLIN**  
**CORE BUS CORRIDORS INFRASTRUCTURE WORKS**

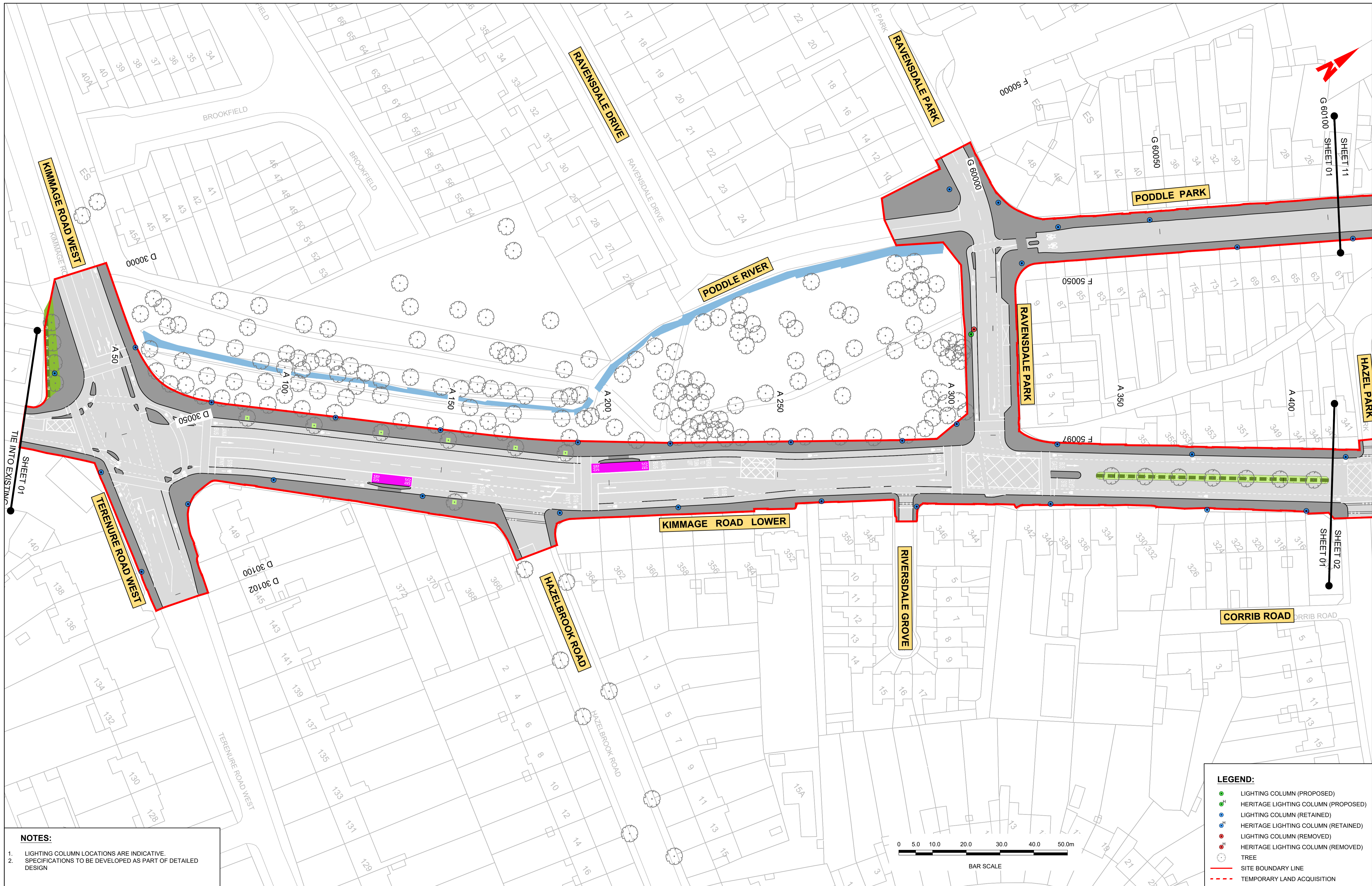
Drawing Title: **KIMMAGE TO CITY CENTRE SCHEME**  
**PUBLIC LIGHTING**  
**KEYPLAN**

Drawing File Name: BCIDD-ROT-LHT\_KP-0011\_XX\_00-DR-EO-0001  
 Sheet Number: 01 of 01  
 Status: A  
 Rev: M01

Date	Scale	Drawn	Checked	Approved
FEB 2023	1:10000 @ A1 1:20000 @ A3	JBB	EFD	SMG

The information contained herein has been provided by the NTA but does not purport to be comprehensive or final. Recipients should not rely on the information. Neither the NTA nor any of its directors, officers, employees, agents, stakeholders or advisers make any representation or warranty as to, or accept any liability or responsibility in relation to, the adequacy, accuracy, reasonableness or completeness of the information provided as part of this document or any matter on which the information is based (including but not limited to loss or damage arising as a result of reliance by recipients on the information or any part of it). Any liabilities are hereby expressly disclaimed.

DO NOT SCALE USE FIGURED DIMENSIONS ONLY



**NOTES:**

- LIGHTING COLUMN LOCATIONS ARE INDICATIVE.
- SPECIFICATIONS TO BE DEVELOPED AS PART OF DETAILED DESIGN

- LEGEND:**
- LIGHTING COLUMN (PROPOSED)
  - HERITAGE LIGHTING COLUMN (PROPOSED)
  - LIGHTING COLUMN (RETAINED)
  - HERITAGE LIGHTING COLUMN (RETAINED)
  - LIGHTING COLUMN (REMOVED)
  - HERITAGE LIGHTING COLUMN (REMOVED)
  - TREE
  - SITE BOUNDARY LINE
  - TEMPORARY LAND ACQUISITION

**Disclaimers**

a. © National Transport Authority (NTA) 2022. This drawing is confidential and the copyright in it is owned by NTA. This drawing must not be either loaned, copied or otherwise reproduced in whole or in part or used for any purpose without the prior permission of NTA.

b. This drawing is to be used for the design element identified in the title box. Other information shown is to be considered indicative only. The drawing is to be read in conjunction with all other relevant design drawings.

c. O.S. data used for plans are printed under © Ordnance Survey Ireland Government of Ireland. All rights reserved. Licence Number 2022/OSI\_NMA\_180 National Transport Authority. All elevations are in metres and relate to OSI Geoid Model (OSGM15) Mean Head. All Co-ordinates are in Irish Transverse Mercator Grid (ITM) as defined by OSI active local GPS station.

d. Information concerning the position of apparatus shown on this drawing is based on drawings supplied by the utility owners and/or the utility works contractor, whilst every care has been taken in the preparation of this drawing, positions should be taken as approximate and are intended for general guidance only and no representation is made by the NTA as to the accuracy, completeness, sufficiency or otherwise of this drawing and the position of the apparatus. The information contained herein does not purport to be comprehensive or final as the apparatus is subject to being altered and/or superceded. Recipients should not rely on this information. Any liabilities are hereby expressly disclaimed.

e. The information contained herein has been provided by the NTA but does not purport to be comprehensive or final. Recipients should not rely on the information. Neither the NTA nor any of its directors, officers, employees, agents, stakeholders or advisers make any representation or warranty as to, or accept any liability or responsibility in relation to, the adequacy, accuracy, reasonableness or completeness of the information provided as part of this document or any matter on which the information is based (including but not limited to loss or damage arising as a result of reliance by recipients on the information or any part of it). Any liabilities are hereby expressly disclaimed.

Rev	Date	Drn	Chk'd	App'd	Description
M01	FEB 2023	JBB	EFD	SMG	ISSUE FOR PHASE 4: PLANNING

Client: **NTA**  
Údarás Náisiúnta Iompair  
National Transport Authority

Date: FEB 2023

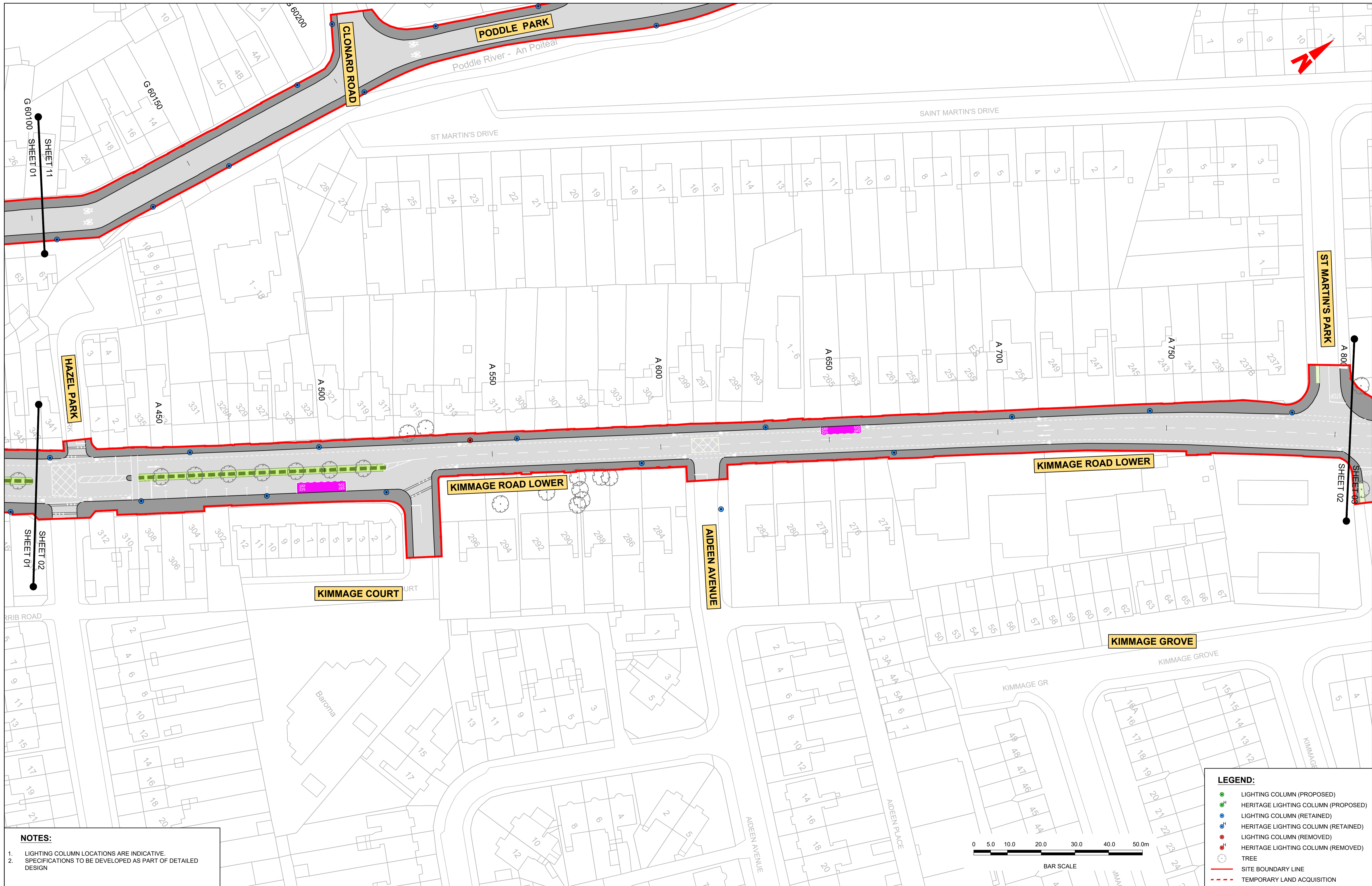
Scale: 1:500 @ A1  
1:1000 @ A3

Engineering Designer: **CIROD**  
TYPSA

Drawn: JBB  
Checked: EFD  
Approved: SMG

Programme Title: <b>BUSCONNECTS DUBLIN CORE BUS CORRIDORS INFRASTRUCTURE WORKS</b>			
Drawing Title: <b>KIMMAGE TO CITY CENTRE SCHEME PUBLIC LIGHTING LAYOUT</b>			
Drawing File Name: BCIDD-ROT-LHT_RL-0011_XX_00-DR-EO-0001	Sheet Number: 01 of 14	Status: A	Rev: M01

DO NOT SCALE USE FIGURED DIMENSIONS ONLY



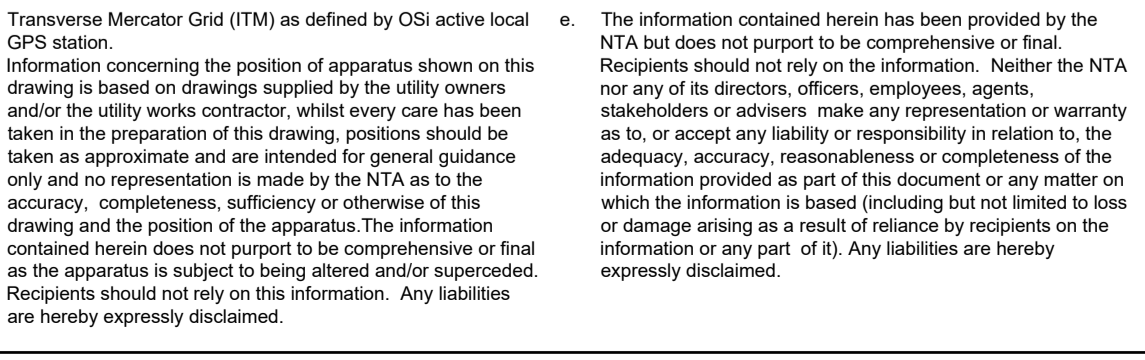
**NOTES:**

- LIGHTING COLUMN LOCATIONS ARE INDICATIVE.
- SPECIFICATIONS TO BE DEVELOPED AS PART OF DETAILED DESIGN

**LEGEND:**

- LIGHTING COLUMN (PROPOSED)
- HERITAGE LIGHTING COLUMN (PROPOSED)
- LIGHTING COLUMN (RETAINED)
- HERITAGE LIGHTING COLUMN (RETAINED)
- LIGHTING COLUMN (REMOVED)
- HERITAGE LIGHTING COLUMN (REMOVED)
- TREE
- SITE BOUNDARY LINE
- TEMPORARY LAND ACQUISITION

Disclaimer  
 a. © National Transport Authority (NTA) 2022. This drawing is confidential and the copyright in it is owned by NTA. This drawing must not be either loaned, copied or otherwise reproduced in whole or in part or used for any purpose without the prior permission of NTA.  
 b. This drawing is to be used for the design element identified in the title block. Other information shown is to be considered indicative only. The drawing is to be read in conjunction with all other relevant design drawings.  
 c. O.S. data used for plans are printed under © Ordnance Survey Ireland Government of Ireland. All rights reserved. Licence Number 2022/OSI\_NMA\_180 National Transport Authority. All elevations are in metres and relate to OSI Geoid Model (OSGM15) Mean Head. All Co-ordinates are in Irish Transverse Mercator Grid (ITM) as defined by OSI active local GPS station.  
 d. Information concerning the position of apparatus shown on this drawing is based on drawings supplied by the utility owners and/or the utility works contractor, whilst every care has been taken in the preparation of this drawing, positions should be taken as approximate and are intended for general guidance only and no representation is made by the NTA as to the accuracy, completeness, sufficiency or otherwise of this drawing and the position of the apparatus. The information contained herein does not purport to be comprehensive or final as the apparatus is subject to being altered and/or superceded. Recipients should not rely on this information. Any liabilities are hereby expressly disclaimed.  
 e. The information contained herein has been provided by the NTA but does not purport to be comprehensive or final. Recipients should not rely on the information. Neither the NTA nor any of its directors, officers, employees, agents, stakeholders or advisers make any representation or warranty as to, or accept any liability or responsibility in relation to, the adequacy, accuracy, reasonableness or completeness of the information provided as part of this document or any matter on which the information is based (including but not limited to loss or damage arising as a result of reliance by recipients on the information or any part of it). Any liabilities are hereby expressly disclaimed.



Rev	Date	Drn	Chk'd	App'd	Description
M01	FEB 2023	JBB	EFD	SMG	ISSUE FOR PHASE 4: PLANNING

Client: **NTA**  
 Údarás Náisiúnta Iompair  
 National Transport Authority

Engineering Designer: **CIROD**  
 TYPSA

Date: FEB 2023  
 Scale: 1:500 @ A1, 1:1000 @ A3  
 Drawn: JBB  
 Checked: EFD  
 Approved: SMG

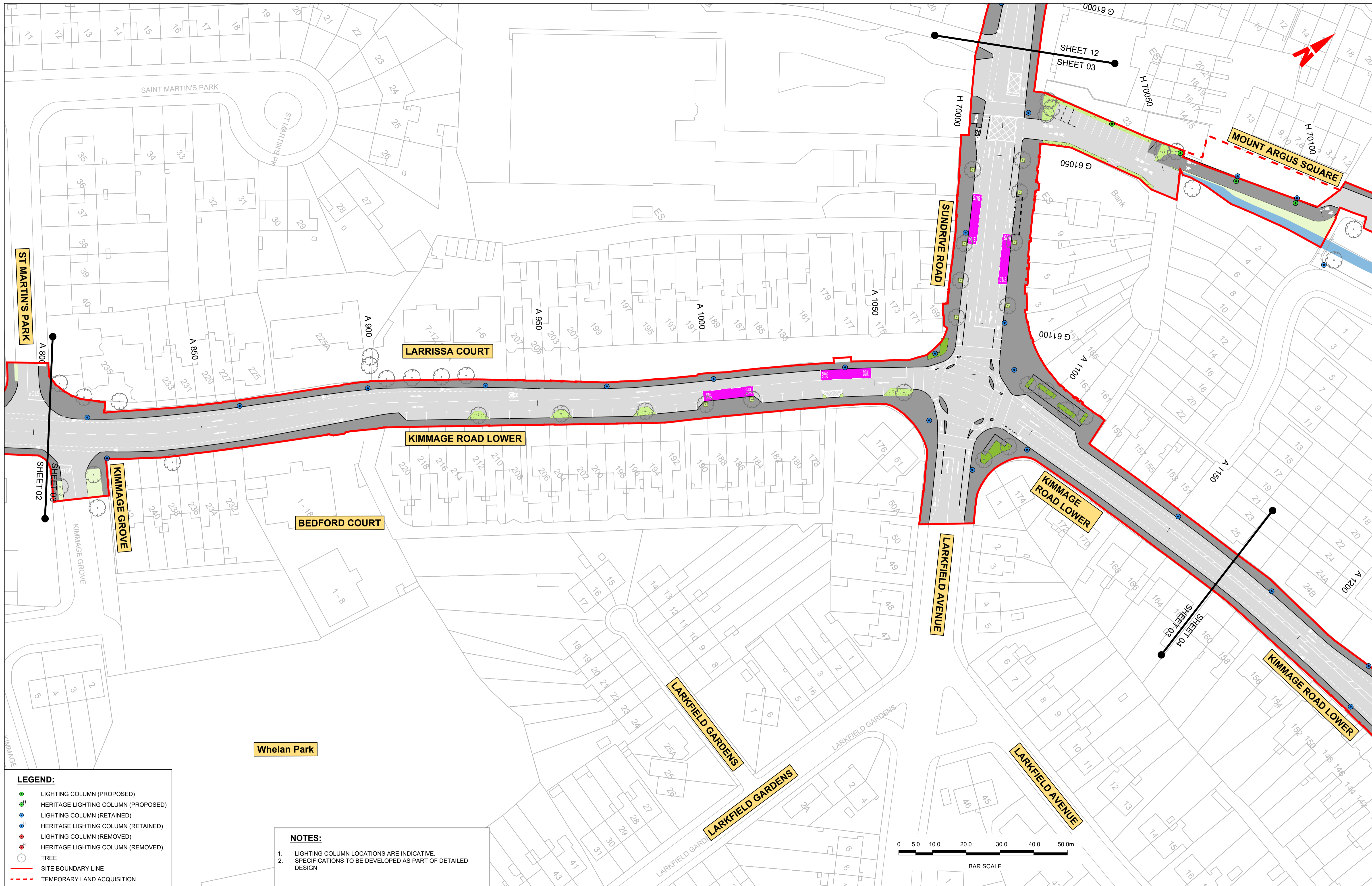
Programme Code: BCIDD  
 Originator Code: ROT  
 QMS Code:

Programme Title: **BUSCONNECTS DUBLIN**  
**CORE BUS CORRIDORS INFRASTRUCTURE WORKS**

Drawing Title: KIMMAGE TO CITY CENTRE SCHEME  
 PUBLIC LIGHTING LAYOUT

Drawing File Name: BCIDD-ROT-LHT\_RL-0011\_XX\_00-DR-EO-0002  
 Sheet Number: 02 of 14  
 Status: A  
 Rev: M01

DO NOT SCALE USE FIGURED DIMENSIONS ONLY



**Disclaimer:**

a. © National Transport Authority (NTA) 2022. This drawing is confidential and the copyright in it is owned by NTA. This drawing must not be either loaned, copied or otherwise reproduced in whole or in part or used for any purpose without the prior permission of NTA.

b. This drawing is to be used for the design element identified in the title block. Other information shown is to be considered indicative only. The drawing is to be read in conjunction with all other relevant design drawings.

c. O.S. data used for plans are printed under © Ordnance Survey Ireland Government of Ireland. All rights reserved. Licence Number 2022/OSI\_NMA\_180 National Transport Authority. All elevations are in metres and relate to OSI Grid Model (OSGM15) Mean Head. All Co-ordinates are in Irish Transverse Mercator Grid (ITM) as defined by OSI active local GPS station.

d. Information concerning the position of apparatus shown on this drawing is based on drawings supplied by the utility owners and/or the utility works contractor, whilst every care has been taken in the preparation of this drawing, positions should be taken as approximate and are intended for general guidance only and no representation is made by the NTA as to the accuracy, completeness, sufficiency or otherwise of this drawing and the position of the apparatus. The information contained herein does not purport to be comprehensive or final as the apparatus is subject to being altered and/or superceded. Recipients should not rely on this information. Any liabilities are hereby expressly disclaimed.

e. The information contained herein has been provided by the NTA but does not purport to be comprehensive or final. Recipients should not rely on the information. Neither the NTA nor any of its directors, officers, employees, agents, stakeholders or advisers make any representation or warranty as to, or accept any liability or responsibility in relation to, the adequacy, accuracy, reasonableness or completeness of the information provided as part of this document or any matter on which the information is based (including but not limited to loss or damage arising as a result of reliance by recipients on the information or any part of it). Any liabilities are hereby expressly disclaimed.

**Project Ireland 2040**  
Building Ireland's Future

Rev	Date	Drn	Chk'd	App'd	Description
M01	FEB 2023	JBB	EFD	SMG	ISSUE FOR PHASE 4: PLANNING

Client: **NTA**  
Údarás Náisiúnta Iompair  
National Transport Authority

Date: FEB 2023  
Scale: 1:500 @ A1  
1:1000 @ A3

Programme Code: BCIDD  
Originator Code: ROT

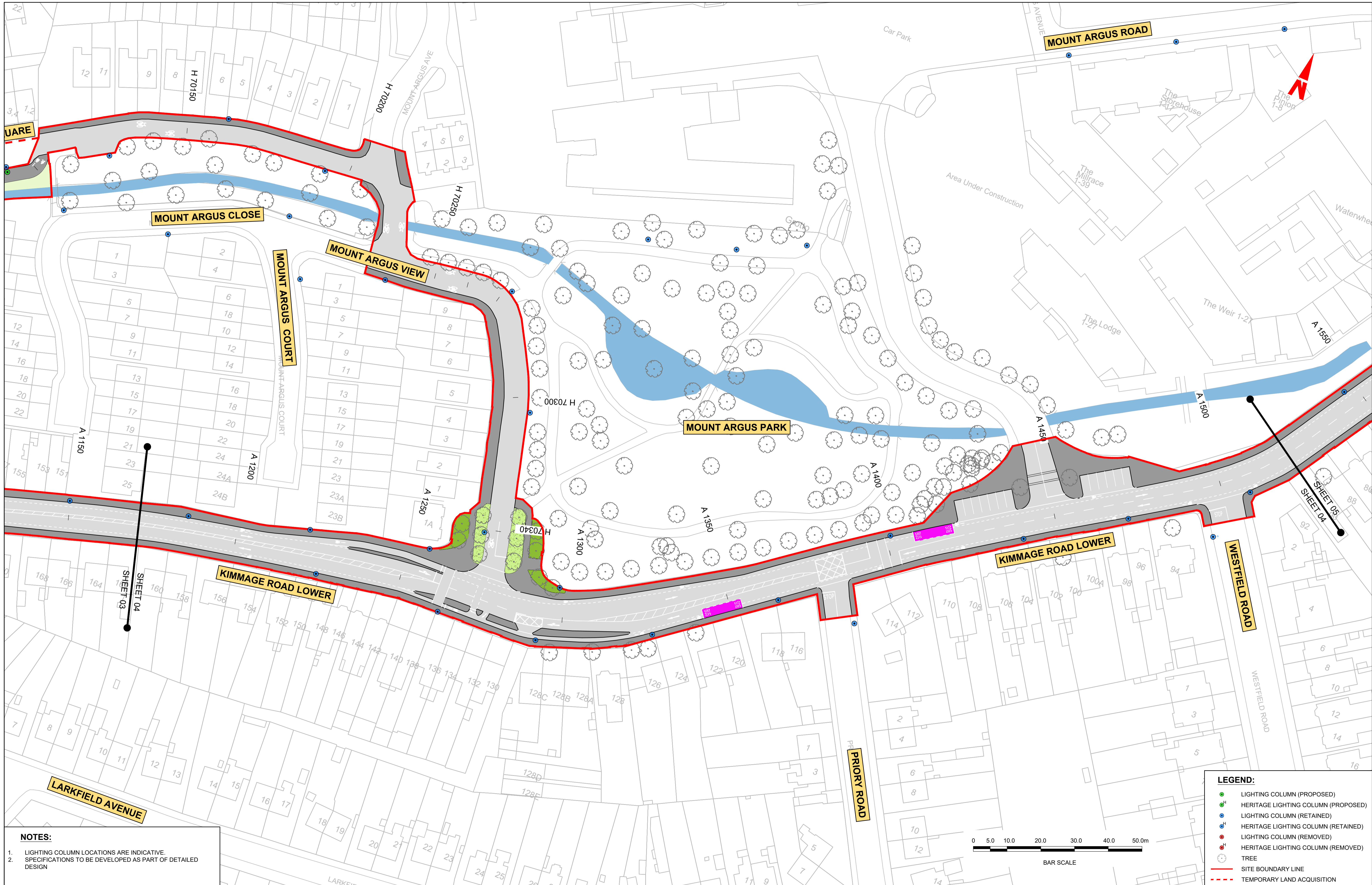
Engineering Designer: **CIROD**  
TYPSA

Drawn: JBB  
Checked: EFD  
Approved: SMG

Rev	Date	Drn	Chk'd	App'd	Description
M01	FEB 2023	JBB	EFD	SMG	ISSUE FOR PHASE 4: PLANNING

Programme Title: <b>BUSCONNECTS DUBLIN</b>			
CORE BUS CORRIDORS INFRASTRUCTURE WORKS			
Drawing Title: KIMMAGE TO CITY CENTRE SCHEME PUBLIC LIGHTING LAYOUT			
Drawing File Name: BCIDD-ROT-LHT_RL-0011_XX_00-DR-EO-0003	Sheet Number: 03 of 14	Status: A	Rev: M01

DO NOT SCALE USE FIGURED DIMENSIONS ONLY



**NOTES:**

- LIGHTING COLUMN LOCATIONS ARE INDICATIVE.
- SPECIFICATIONS TO BE DEVELOPED AS PART OF DETAILED DESIGN

Disclaimer  
 a. © National Transport Authority (NTA) 2022. This drawing is confidential and the copyright in it is owned by NTA. This drawing must not be either loaned, copied or otherwise reproduced in whole or in part or used for any purpose without the prior permission of NTA.  
 b. This drawing is to be used for the design element identified in the titlebox. Other information shown is to be considered indicative only. The drawing is to be read in conjunction with all other relevant design drawings.  
 c. O.S. data used for plans are printed under © Ordnance Survey Ireland Government of Ireland. All rights reserved. Licence Number 2022/OSI\_NMA\_180 National Transport Authority. All elevations are in metres and relate to OSI Geoid Model (OSGM15) Mean Head. All Co-ordinates are in Irish

Transverse Mercator Grid (ITM) as defined by OSI active local GPS station.  
 d. Information concerning the position of apparatus shown on this drawing is based on drawings supplied by the utility owners and/or the utility works contractor, whilst every care has been taken in the preparation of this drawing, positions should be taken as approximate and are intended for general guidance only and no representation is made by the NTA as to the accuracy, completeness, sufficiency or otherwise of this drawing and the position of the apparatus. The information contained herein does not purport to be comprehensive or final as the apparatus is subject to being altered and/or superseded. Recipients should not rely on this information. Any liabilities are hereby expressly disclaimed.

The information contained herein has been provided by the NTA but does not purport to be comprehensive or final. Recipients should not rely on the information. Neither the NTA nor any of its directors, officers, employees, agents, stakeholders or advisers make any representation or warranty as to, or accept any liability or responsibility in relation to, the adequacy, accuracy, reasonableness or completeness of the information provided as part of this document or any matter on which the information is based (including but not limited to loss or damage arising as a result of reliance by recipients on the information or any part of it). Any liabilities are hereby expressly disclaimed.



Rev	Date	Drm	Chk'd	App'd	Description
M01	FEB 2023	JBB	EFD	SMG	ISSUE FOR PHASE 4: PLANNING

Client  
**NTA**  
 Údarás Náisiúnta Iompair  
 National Transport Authority

Engineering Designer  
**PROD**  
 TYPSA

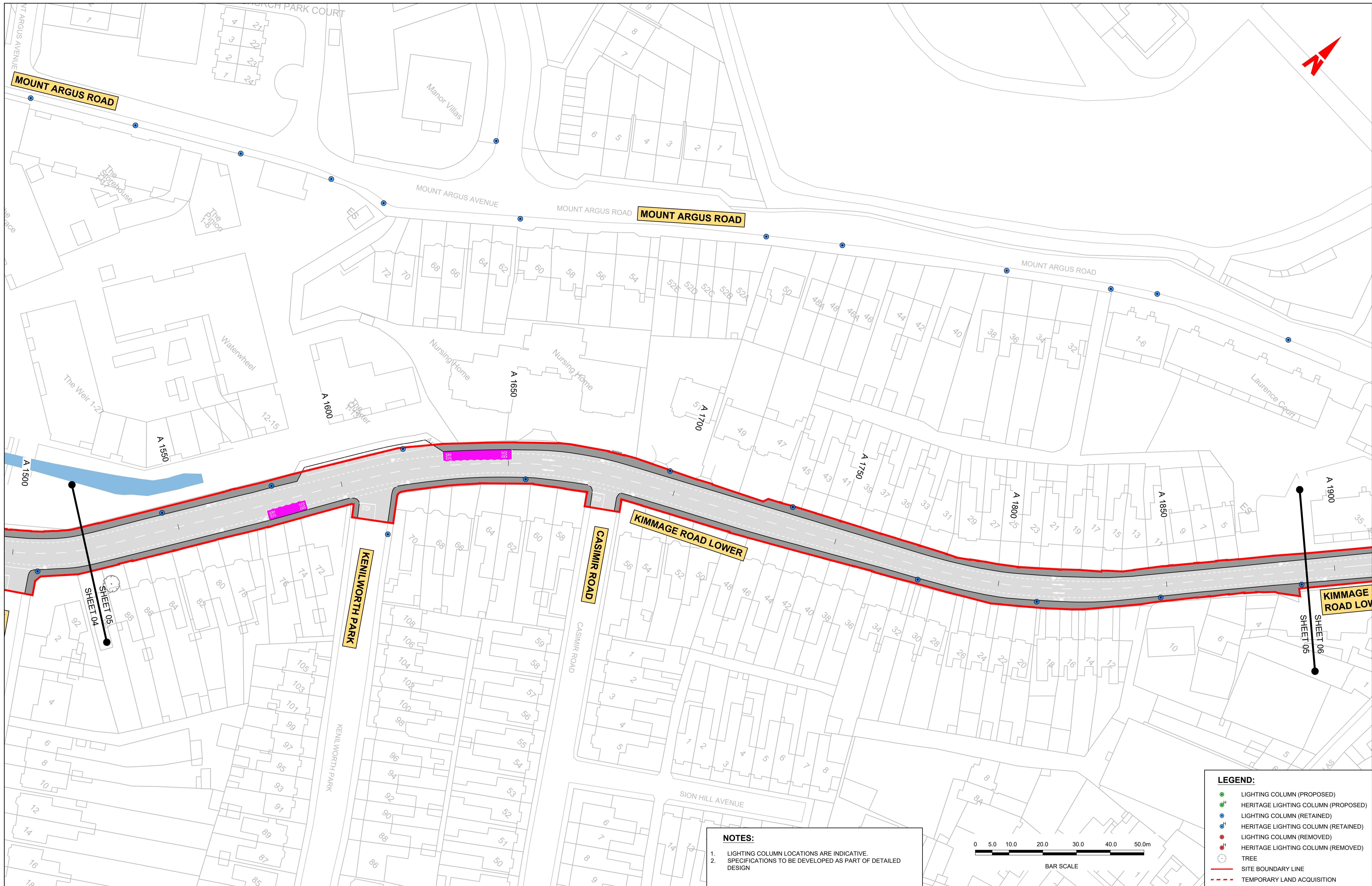
Date	Scale	Drawn	Checked	Approved
FEB 2023	1:500 @ A1 1:1000 @ A3	JBB	EFD	SMG

Programme Title  
**BUSCONNECTS DUBLIN**  
**CORE BUS CORRIDORS INFRASTRUCTURE WORKS**

Drawing Title  
 KIMMAGE TO CITY CENTRE SCHEME  
 PUBLIC LIGHTING LAYOUT

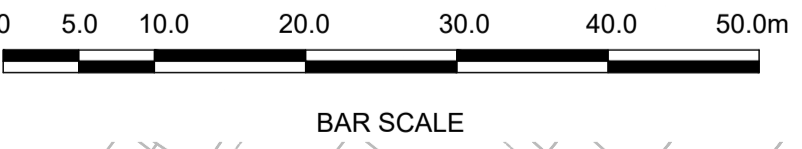
Drawing File Name	Sheet Number	Status	Rev
BCIDD-ROT-LHT_RL-0011_XX_00-DR-EO-004	04 of 14	A	M01

DO NOT SCALE USE FIGURED DIMENSIONS ONLY



**NOTES:**

- LIGHTING COLUMN LOCATIONS ARE INDICATIVE.
- SPECIFICATIONS TO BE DEVELOPED AS PART OF DETAILED DESIGN



**LEGEND:**

- LIGHTING COLUMN (PROPOSED)
- <sup>H</sup> HERITAGE LIGHTING COLUMN (PROPOSED)
- LIGHTING COLUMN (RETAINED)
- <sup>H</sup> HERITAGE LIGHTING COLUMN (RETAINED)
- LIGHTING COLUMN (REMOVED)
- <sup>H</sup> HERITAGE LIGHTING COLUMN (REMOVED)
- TREE
- SITE BOUNDARY LINE
- TEMPORARY LAND ACQUISITION

**Disclaimer**

a. © National Transport Authority (NTA) 2022. This drawing is confidential and the copyright in it is owned by NTA. This drawing must not be either loaned, copied or otherwise reproduced in whole or in part or used for any purpose without the prior permission of NTA.

b. This drawing is to be used for the design element identified in the titleblock. Other information shown is to be considered indicative only. The drawing is to be read in conjunction with all other relevant design drawings.

c. O.S. data used for plans are printed under © Ordnance Survey Ireland Government of Ireland. All rights reserved. Licence Number 2022/OSI\_NMA\_180 National Transport Authority. All elevations are in metres and relate to OSI Geoid Model (OSGM15) Mean Head. All Co-ordinates are in Irish Transverse Mercator Grid (ITM) as defined by OSI active local GPS station.

d. Information concerning the position of apparatus shown on this drawing is based on drawings supplied by the utility owners and/or the utility works contractor, whilst every care has been taken in the preparation of this drawing, positions should be taken as approximate and are intended for general guidance only and no representation is made by the NTA as to the accuracy, completeness, sufficiency or otherwise of this drawing and the position of the apparatus. The information contained herein does not purport to be comprehensive or final as the apparatus is subject to being altered and/or superceded. Recipients should not rely on this information. Any liabilities are hereby expressly disclaimed.

The information contained herein has been provided by the NTA but does not purport to be comprehensive or final. Recipients should not rely on the information. Neither the NTA nor any of its directors, officers, employees, agents, stakeholders or advisers make any representation or warranty as to, or accept any liability or responsibility in relation to, the adequacy, accuracy, reasonableness or completeness of the information provided as part of this document or any matter on which the information is based (including but not limited to loss or damage arising as a result of reliance by recipients on the information or any part of it). Any liabilities are hereby expressly disclaimed.



Rev	Date	Drn	Chk'd	App'd	Description
M01	FEB 2023	JBB	EFD	SMG	ISSUE FOR PHASE 4: PLANNING

Client

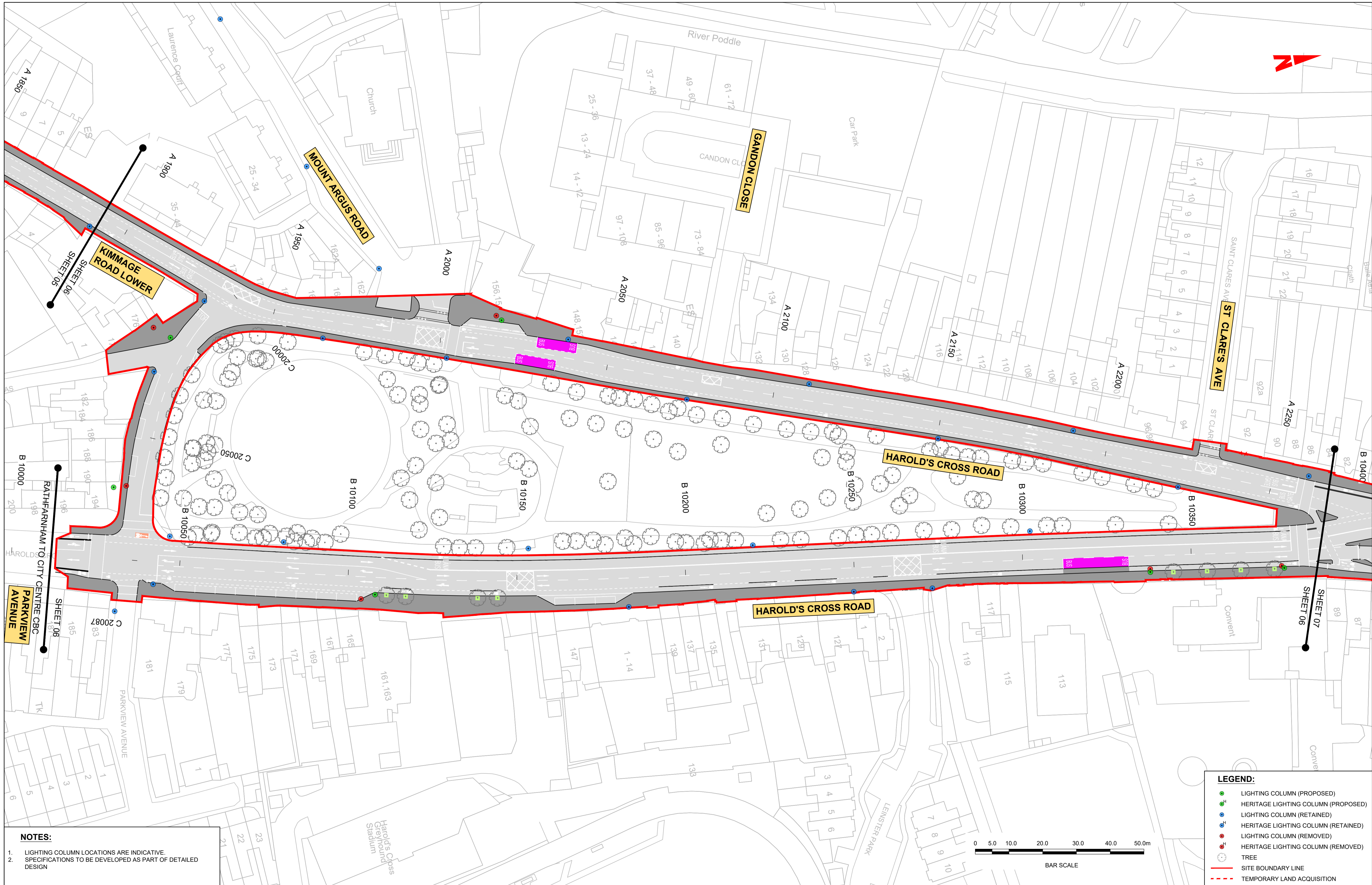
Date: FEB 2023  
 Scale: 1:500 @ A1, 1:1000 @ A3  
 Programme Code: BCIDD  
 Originator Code: ROT

Engineering Designer

Drawn: JBB  
 Checked: EFD  
 Approved: SMG  
 QMS Code

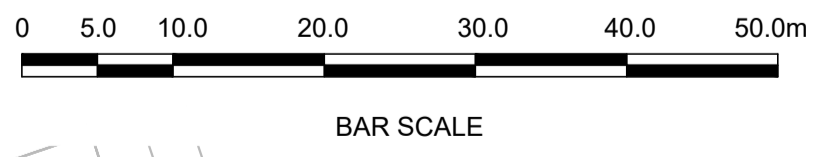
Programme Title <b>BUSCONNECTS DUBLIN CORE BUS CORRIDORS INFRASTRUCTURE WORKS</b>			
Drawing Title KIMMAGE TO CITY CENTRE SCHEME PUBLIC LIGHTING LAYOUT			
Drawing File Name BCIDD-ROT-LHT_RL-0011_XX_00-DR-EO-0005	Sheet Number 05 of 14	Status A	Rev M01





- NOTES:**
- LIGHTING COLUMN LOCATIONS ARE INDICATIVE.
  - SPECIFICATIONS TO BE DEVELOPED AS PART OF DETAILED DESIGN

- LEGEND:**
- LIGHTING COLUMN (PROPOSED)
  - HERITAGE LIGHTING COLUMN (PROPOSED)
  - LIGHTING COLUMN (RETAINED)
  - HERITAGE LIGHTING COLUMN (RETAINED)
  - LIGHTING COLUMN (REMOVED)
  - HERITAGE LIGHTING COLUMN (REMOVED)
  - TREE
  - SITE BOUNDARY LINE
  - - - TEMPORARY LAND ACQUISITION



**Disclaimer**  
 a. © National Transport Authority (NTA) 2022. This drawing is confidential and the copyright in it is owned by NTA. This drawing must not be either loaned, copied or otherwise reproduced in whole or in part or used for any purpose without the prior permission of NTA.  
 b. This drawing is to be used for the design element identified in the title block. Other information shown is to be considered indicative only. The drawing is to be read in conjunction with all other relevant design drawings.  
 c. O.S. data used for plans are printed under © Ordnance Survey Ireland Government of Ireland. All rights reserved. Licence Number 2022/OSI\_NMA\_180 National Transport Authority. All elevations are in metres and relate to OSI Geoid Model (OSGM15) Mean Head. All Co-ordinates are in Irish Transverse Mercator Grid (ITM) as defined by OSI active local GPS station.  
 d. Information concerning the position of apparatus shown on this drawing is based on drawings supplied by the utility owners and/or the utility works contractor, whilst every care has been taken in the preparation of this drawing, positions should be taken as approximate and are intended for general guidance only and no representation is made by the NTA as to the accuracy, completeness, sufficiency or otherwise of this drawing and the position of the apparatus. The information contained herein does not purport to be comprehensive or final as the apparatus is subject to being altered and/or superceded. Recipients should not rely on this information. Any liabilities are hereby expressly disclaimed.

The information contained herein has been provided by the NTA but does not purport to be comprehensive or final. Recipients should not rely on the information. Neither the NTA nor any of its directors, officers, employees, agents, stakeholders or advisers make any representation or warranty as to, or accept any liability or responsibility in relation to, the adequacy, accuracy, reasonableness or completeness of the information provided as part of this document or any matter on which the information is based (including but not limited to loss or damage arising as a result of reliance by recipients on the information or any part of it). Any liabilities are hereby expressly disclaimed.



Rev	Date	Drn	Chk'd	App'd	Description
M01	FEB 2023	JBB	EFD	SMG	ISSUE FOR PHASE 4: PLANNING

Client  
**NTA**  
 Údarás Náisiúnta Iompair  
 National Transport Authority

Engineering Designer  
**PROD**  
 TYPISA

Programme Title  
**BUSCONNECTS DUBLIN**  
**CORE BUS CORRIDORS INFRASTRUCTURE WORKS**

Drawing Title  
 KIMMAGE TO CITY CENTRE SCHEME  
 PUBLIC LIGHTING LAYOUT

Date  
 FEB 2023

Scale  
 1:500 @ A1  
 1:1000 @ A3

Drawn  
 JBB

Checked  
 EFD

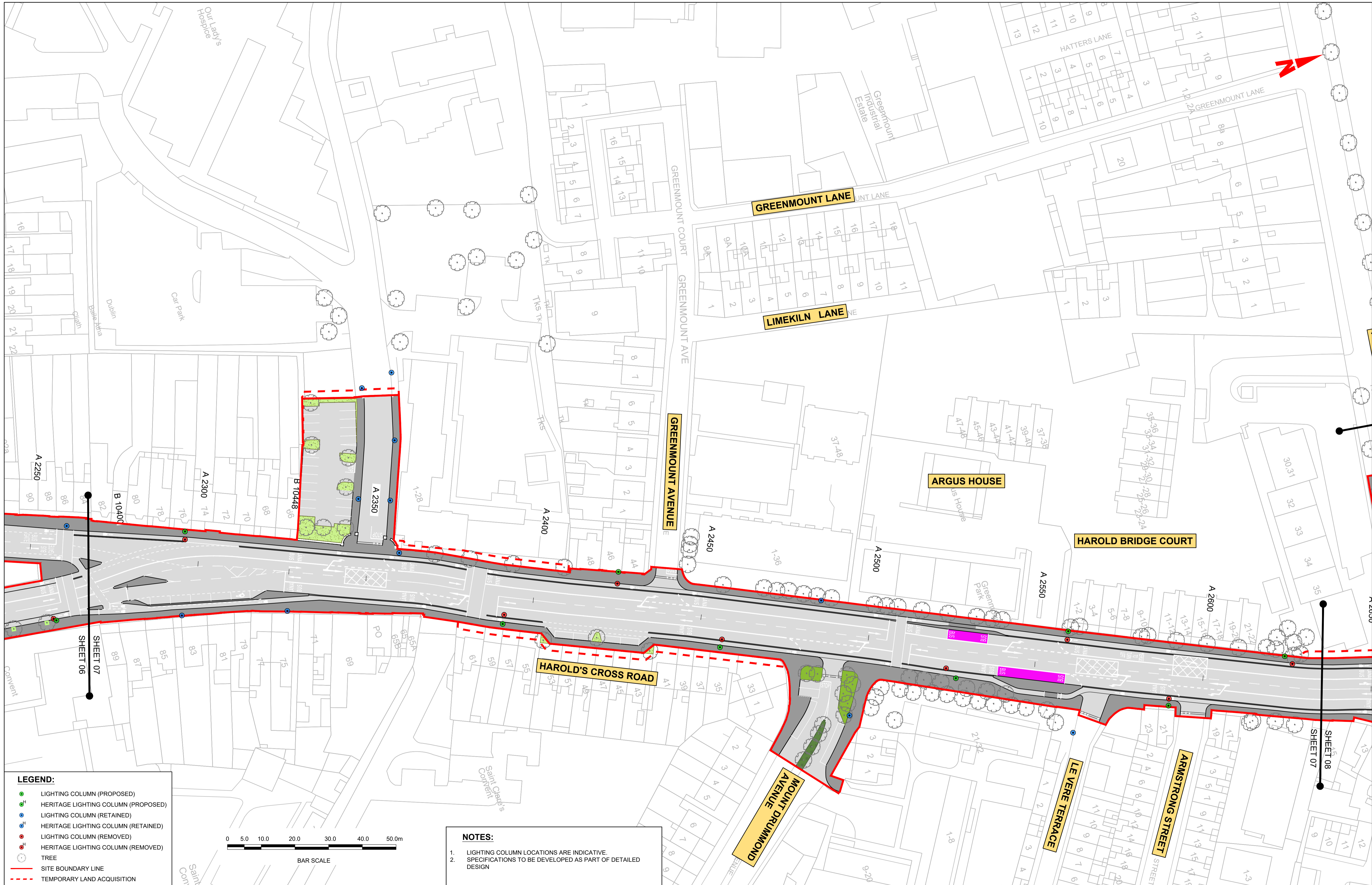
Approved  
 SMG

Drawing File Name  
 BCIDD-ROT-LHT\_RL-0011\_XX\_00-DR-EO-0006

Sheet Number  
 06 of 14

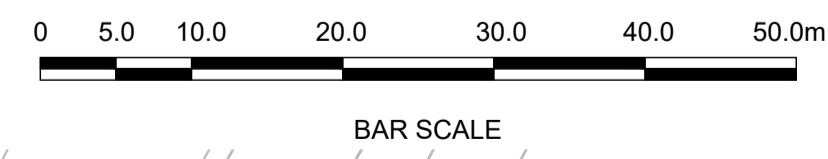
Status  
 A

Rev  
 M01



**LEGEND:**

- LIGHTING COLUMN (PROPOSED)
- HERITAGE LIGHTING COLUMN (PROPOSED)
- LIGHTING COLUMN (RETAINED)
- HERITAGE LIGHTING COLUMN (RETAINED)
- LIGHTING COLUMN (REMOVED)
- HERITAGE LIGHTING COLUMN (REMOVED)
- TREE
- SITE BOUNDARY LINE
- TEMPORARY LAND ACQUISITION



**NOTES:**

- LIGHTING COLUMN LOCATIONS ARE INDICATIVE.
- SPECIFICATIONS TO BE DEVELOPED AS PART OF DETAILED DESIGN

Disclaimer

a. © National Transport Authority (NTA) 2022. This drawing is confidential and the copyright in it is owned by NTA. This drawing must not be either loaned, copied or otherwise reproduced in whole or in part or used for any purpose without the prior permission of NTA.

b. This drawing is to be used for the design element identified in the titlebox. Other information shown is to be considered indicative only. The drawing is to be read in conjunction with all other relevant design drawings.

c. O.S. data used for plans are printed under © Ordnance Survey Ireland Government of Ireland. All rights reserved. Licence Number 2022/OSI\_NMA\_180 National Transport Authority. All elevations are in metres and relate to OSI Geoid Model (OSGM15) Mean Head. All Co-ordinates are in Irish Transverse Mercator Grid (ITM) as defined by OSI active local GPS station.

d. Information concerning the position of apparatus shown on this drawing is based on drawings supplied by the utility owners and/or the utility works contractor, whilst every care has been taken in the preparation of this drawing, positions should be taken as approximate and are intended for general guidance only and no representation is made by the NTA as to the accuracy, completeness, sufficiency or otherwise of this drawing and the position of the apparatus. The information contained herein does not purport to be comprehensive or final as the apparatus is subject to being altered and/or superceded. Recipients should not rely on this information. Any liabilities are hereby expressly disclaimed.

e. The information contained herein has been provided by the NTA but does not purport to be comprehensive or final. Recipients should not rely on the information. Neither the NTA nor any of its directors, officers, employees, agents, stakeholders or advisers make any representation or warranty as to, or accept any liability or responsibility in relation to, the adequacy, accuracy, reasonableness or completeness of the information provided as part of this document or any matter on which the information is based (including but not limited to loss or damage arising as a result of reliance by recipients on the information or any part of it). Any liabilities are hereby expressly disclaimed.



Rev	Date	Drn	Chk'd	App'd	Description
M01	FEB 2023	JBB	EFD	SMG	ISSUE FOR PHASE 4: PLANNING

Client

Údarás Náisiúnta Iompair  
National Transport Authority

Date: FEB 2023  
Scale: 1:500 @ A1  
1:1000 @ A3

Engineering Designer

Drawn	Checked	Approved
JBB	EFD	SMG

Programme Code: BCIDD  
Originator Code: ROT

Programme Title: **BUSCONNECTS DUBLIN**  
**CORE BUS CORRIDORS INFRASTRUCTURE WORKS**

Drawing Title: KIMMAGE TO CITY CENTRE SCHEME  
PUBLIC LIGHTING LAYOUT

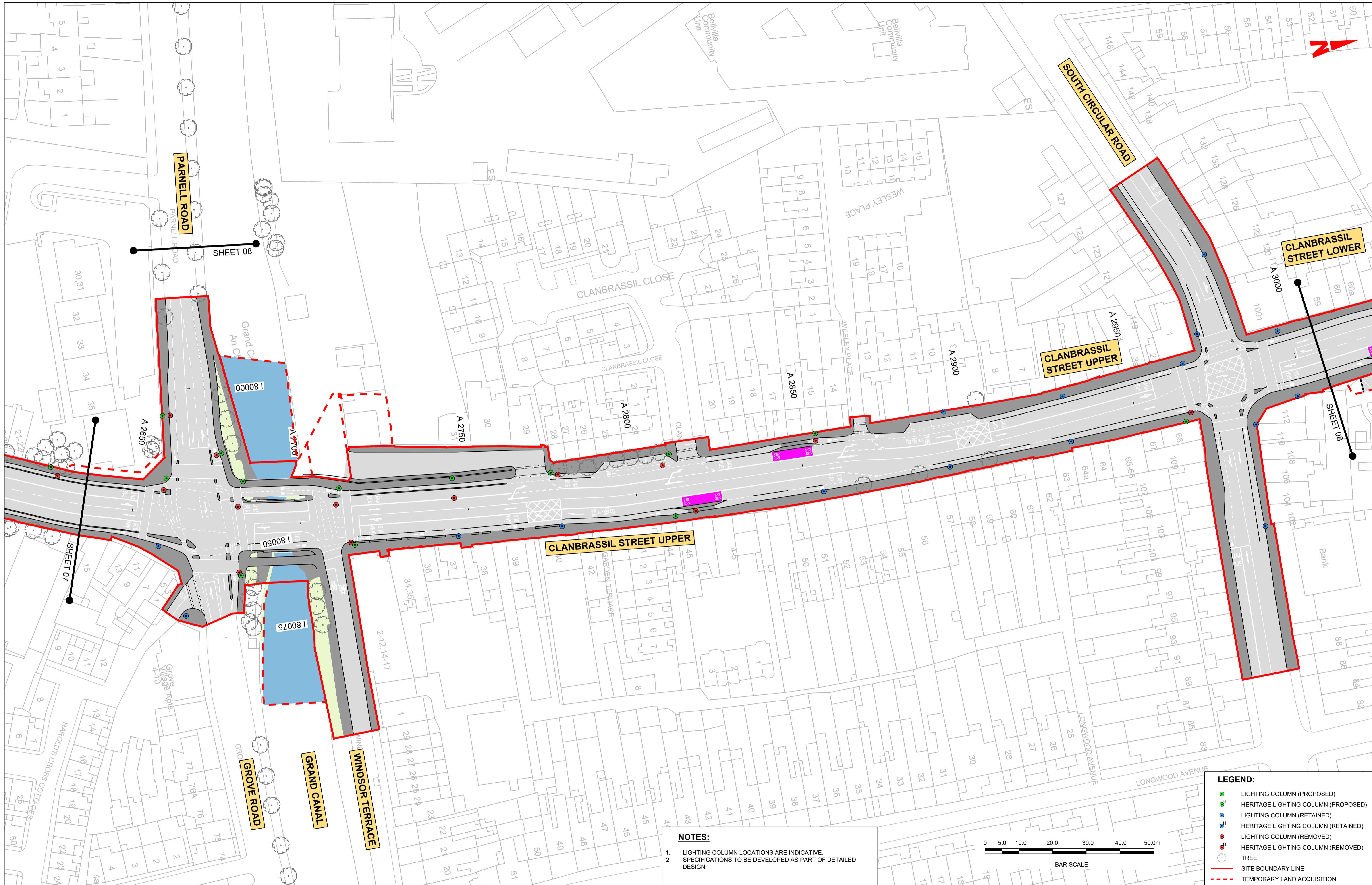
Drawing File Name: BCIDD-ROT-LHT\_RL-0011\_XX\_00-DR-EO-0007

Sheet Number: 07 of 14

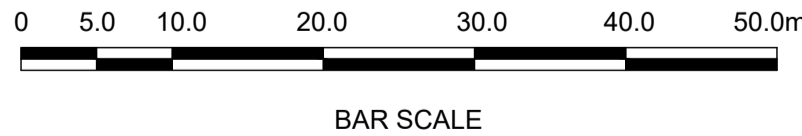
Status: A

Rev: M01

DO NOT SCALE USE FIGURED DIMENSIONS ONLY



**NOTES:**  
 1. LIGHTING COLUMN LOCATIONS ARE INDICATIVE.  
 2. SPECIFICATIONS TO BE DEVELOPED AS PART OF DETAILED DESIGN



- LEGEND:**
- LIGHTING COLUMN (PROPOSED)
  - HERITAGE LIGHTING COLUMN (PROPOSED)
  - LIGHTING COLUMN (RETAINED)
  - HERITAGE LIGHTING COLUMN (RETAINED)
  - LIGHTING COLUMN (REMOVED)
  - HERITAGE LIGHTING COLUMN (REMOVED)
  - TREE
  - SITE BOUNDARY LINE
  - TEMPORARY LAND ACQUISITION

**Disclaimer**  
 a. © National Transport Authority (NTA) 2022. This drawing is confidential and the copyright in it is owned by NTA. This drawing must not be either loaned, copied or otherwise reproduced in whole or in part or used for any purpose without the prior permission of NTA.  
 b. This drawing is to be used for the design element identified in the title block. Other information shown is to be considered indicative only. The drawing is to be read in conjunction with all other relevant design drawings.  
 c. O.S. data used for plans are printed under © Ordnance Survey Ireland Government of Ireland. All rights reserved. Licence Number 2022/OSI\_NMA\_180 National Transport Authority. All elevations are in metres and relate to OSI Geoid Model (OSGM15) Mean Head. All Co-ordinates are in Irish

Transverse Mercator Grid (ITM) as defined by OSI active local GPS station.  
 d. Information concerning the position of apparatus shown on this drawing is based on drawings supplied by the utility owners and/or the utility works contractor, whilst every care has been taken in the preparation of this drawing, positions should be taken as approximate and are intended for general guidance only and no representation is made by the NTA as to the accuracy, completeness, sufficiency or otherwise of this drawing and the position of the apparatus. The information contained herein does not purport to be comprehensive or final as the apparatus is subject to being altered and/or superceded. Recipients should not rely on this information. Any liabilities are hereby expressly disclaimed.

The information contained herein has been provided by the NTA but does not purport to be comprehensive or final. Recipients should not rely on the information. Neither the NTA nor any of its directors, officers, employees, agents, stakeholders or advisers make any representation or warranty as to, or accept any liability or responsibility in relation to, the adequacy, accuracy, reasonableness or completeness of the information provided as part of this document or any matter on which the information is based (including but not limited to loss or damage arising as a result of reliance by recipients on the information or any part of it). Any liabilities are hereby expressly disclaimed.

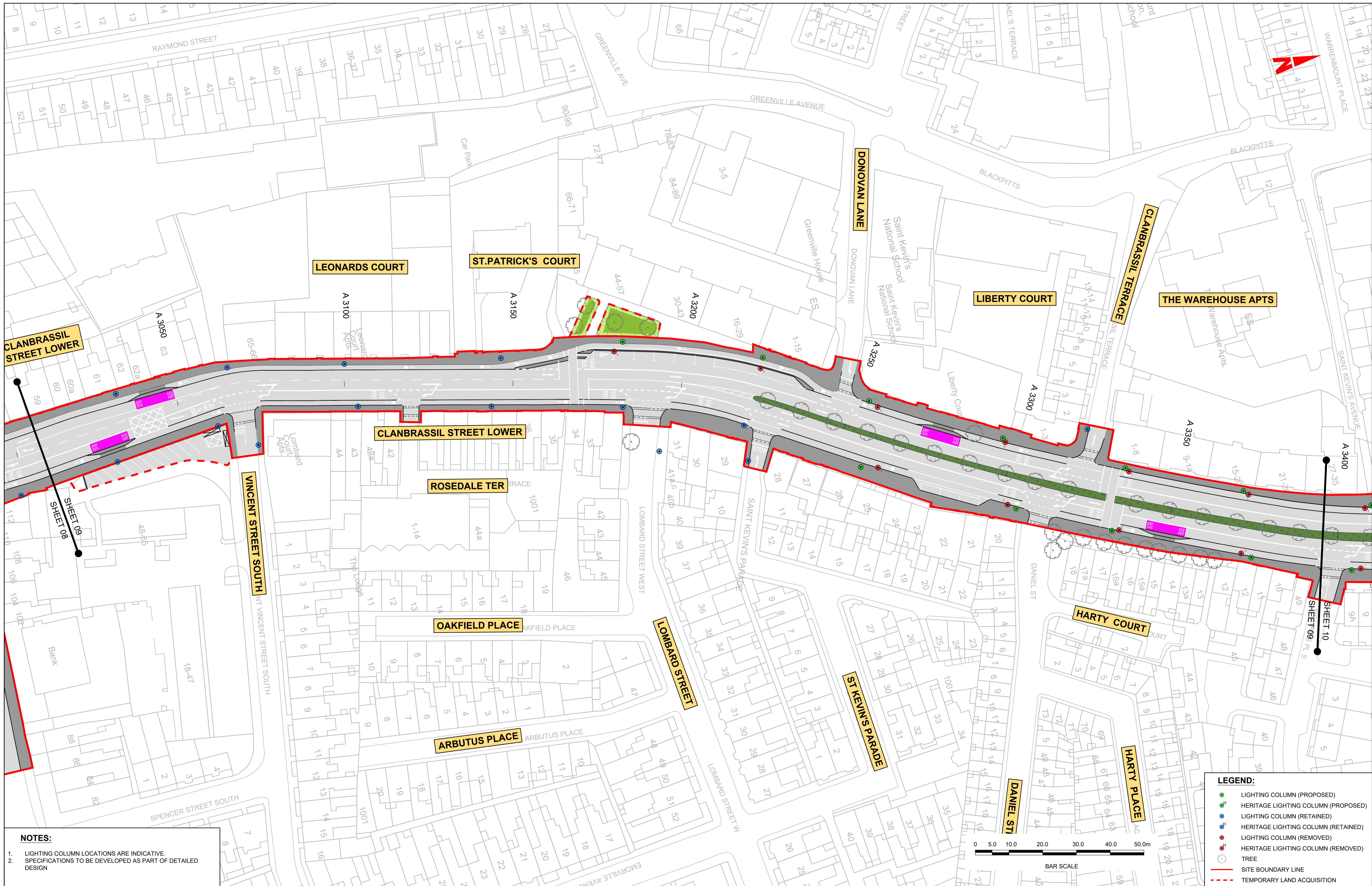


Rev	Date	Drm	Chk'd	App'd	Description
M01	FEB 2023	JBB	EFD	SMG	ISSUE FOR PHASE 4: PLANNING

Client <b>NTA</b> Údarás Náisiúnta Iompair National Transport Authority		Engineering Designer <b>CIROD</b> TYPSA		
Date FEB 2023	Scale 1:500 @ A1 1:1000 @ A3	Drawn JBB	Checked EFD	Approved SMG
Programme Code BCIDD	Originator Code ROT	QMS Code		

Programme Title <b>BUSCONNECTS DUBLIN</b> CORE BUS CORRIDORS INFRASTRUCTURE WORKS				
Drawing Title KIMMAGE TO CITY CENTRE SCHEME PUBLIC LIGHTING LAYOUT				
Drawing File Name BCIDD-ROT-LHT_RL-0011_XX_00-DR-EO-0008	Sheet Number 08 of 14	Status A	Rev M01	

DO NOT SCALE USE FIGURED DIMENSIONS ONLY



**NOTES:**

- LIGHTING COLUMN LOCATIONS ARE INDICATIVE.
- SPECIFICATIONS TO BE DEVELOPED AS PART OF DETAILED DESIGN

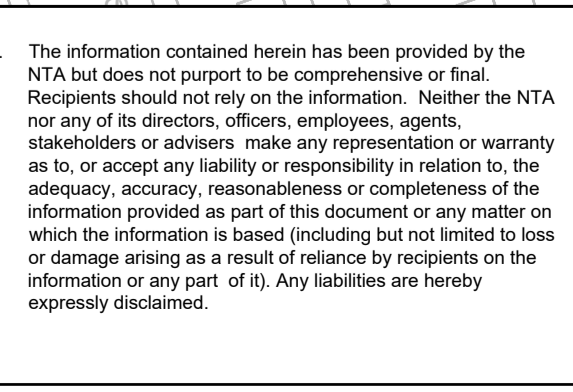
**LEGEND:**

- LIGHTING COLUMN (PROPOSED)
- HERITAGE LIGHTING COLUMN (PROPOSED)
- LIGHTING COLUMN (RETAINED)
- HERITAGE LIGHTING COLUMN (RETAINED)
- LIGHTING COLUMN (REMOVED)
- HERITAGE LIGHTING COLUMN (REMOVED)
- TREE
- SITE BOUNDARY LINE
- - - TEMPORARY LAND ACQUISITION

**Disclaimers:**

- National Transport Authority (NTA) 2022. This drawing is confidential and the copyright in it is owned by NTA. This drawing must not be either loaned, copied or otherwise reproduced in whole or in part or used for any purpose without the prior permission of NTA.
- This drawing is to be used for the design element identified in the title block. Other information shown is to be considered indicative only. The drawing is to be read in conjunction with all other relevant design drawings.
- O.S. data used for plans are printed under © Ordnance Survey Ireland Government of Ireland. All rights reserved. Licence Number 2022/OSI\_NMA\_180 National Transport Authority. All elevations are in metres and relate to OSI Geoid Model (OSGM15) Mean Head. All Co-ordinates are in Irish Transverse Mercator Grid (ITM) as defined by OSI active local GPS station.

- The information contained herein has been provided by the NTA but does not purport to be comprehensive or final. Recipients should not rely on the information. Neither the NTA nor any of its directors, officers, employees, agents, stakeholders or advisers make any representation or warranty as to, or accept any liability or responsibility in relation to, the adequacy, accuracy, reasonableness or completeness of the information provided as part of this document or any matter on which the information is based (including but not limited to loss or damage arising as a result of reliance by recipients on the information or any part of it). Any liabilities are hereby expressly disclaimed.



Rev	Date	Drn	Chk'd	App'd	Description
M01	FEB 2023	JBB	EFD	SMG	ISSUE FOR PHASE 4: PLANNING

Client: **NTA**  
 Údarás Náisiúnta Iompair  
 National Transport Authority

Engineering Designer: **PROD**  
 TYPSA

Date: FEB 2023  
 Scale: 1:500 @ A1  
 1:1000 @ A3

Drawn: JBB  
 Checked: EFD  
 Approved: SMG

Programme Code: BCIDD  
 Originator Code: ROT

QMS Code:

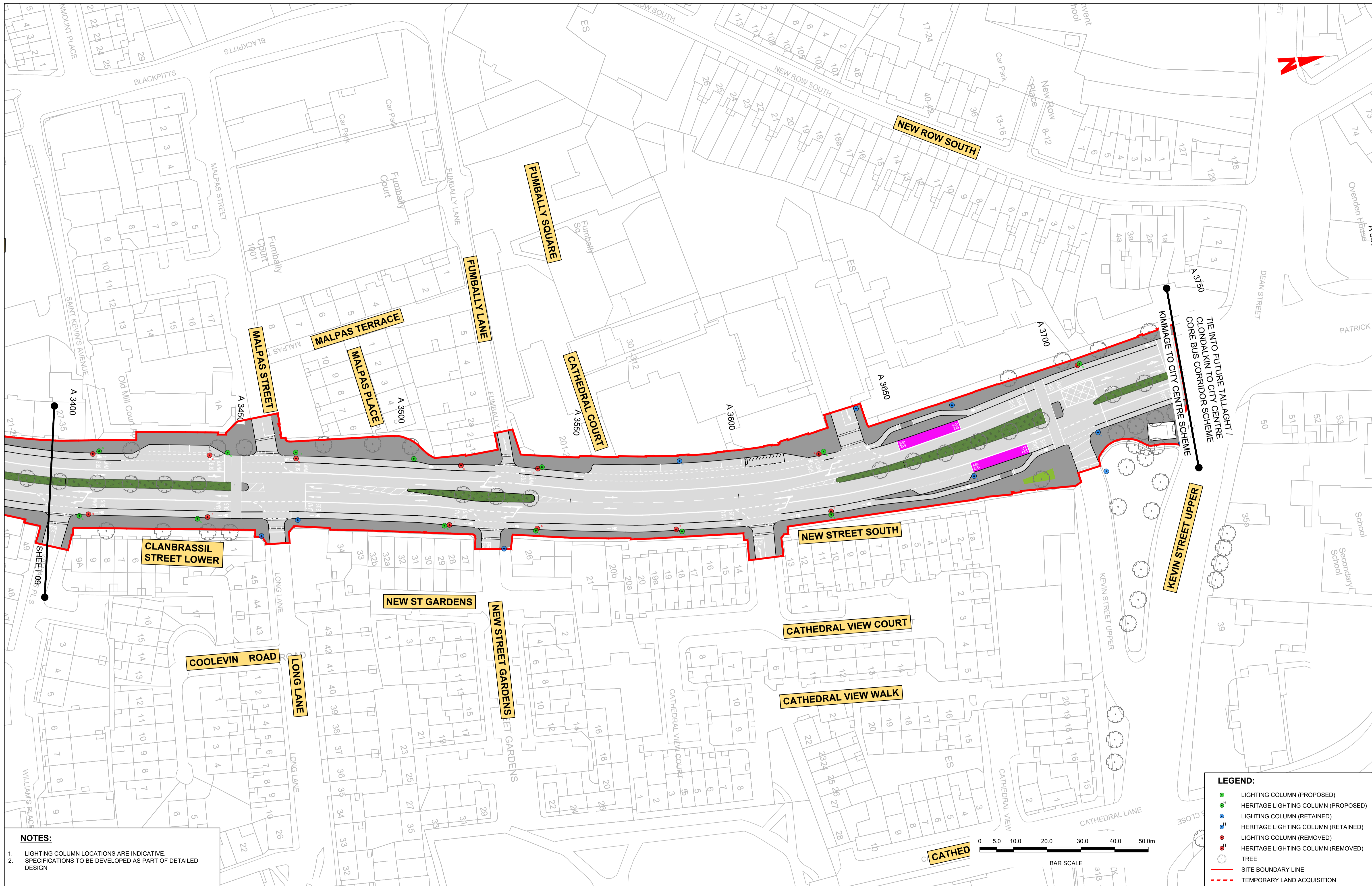
Rev	Date	Drn	Chk'd	App'd	Description
M01	FEB 2023	JBB	EFD	SMG	ISSUE FOR PHASE 4: PLANNING

Programme Title: **BUSCONNECTS DUBLIN**  
**CORE BUS CORRIDORS INFRASTRUCTURE WORKS**

Drawing Title: **KIMMAGE TO CITY CENTRE SCHEME**  
**PUBLIC LIGHTING LAYOUT**

Drawing File Name: BCIDD-ROT-LHT\_RL-0011\_XX\_00-DR-EO-0009  
 Sheet Number: 09 of 14  
 Status: A  
 Rev: M01

DO NOT SCALE USE FIGURED DIMENSIONS ONLY



- NOTES:**
1. LIGHTING COLUMN LOCATIONS ARE INDICATIVE.
  2. SPECIFICATIONS TO BE DEVELOPED AS PART OF DETAILED DESIGN

**LEGEND:**

- LIGHTING COLUMN (PROPOSED)
- HERITAGE LIGHTING COLUMN (PROPOSED)
- LIGHTING COLUMN (RETAINED)
- HERITAGE LIGHTING COLUMN (RETAINED)
- LIGHTING COLUMN (REMOVED)
- HERITAGE LIGHTING COLUMN (REMOVED)
- TREE
- SITE BOUNDARY LINE
- TEMPORARY LAND ACQUISITION



Disclaimer  
 a. © National Transport Authority (NTA) 2022. This drawing is confidential and the copyright in it is owned by NTA. This drawing must not be either loaned, copied or otherwise reproduced in whole or in part or used for any purpose without the prior permission of NTA.  
 b. This drawing is to be used for the design element identified in the title block. Other information shown is to be considered indicative only. The drawing is to be read in conjunction with all other relevant design drawings.  
 c. O.S. data used for plans are printed under © Ordnance Survey Ireland Government of Ireland. All rights reserved. Licence Number 2022/OSI\_NMA\_180 National Transport Authority. All elevations are in metres and relate to OSI Geoid Model (OSGM15) Mean Head. All Co-ordinates are in Irish

Transverse Mercator Grid (ITM) as defined by OSI active local GPS station.  
 d. Information concerning the position of apparatus shown on this drawing is based on drawings supplied by the utility owners, and/or the utility works contractor, whilst every care has been taken in the preparation of this drawing, positions should be taken as approximate and are intended for general guidance only and no representation is made by the NTA as to the accuracy, completeness, sufficiency or otherwise of this information. The information is subject to being altered and/or superseded. Recipients should not rely on this information. Any liabilities are hereby expressly disclaimed.

The information contained herein has been provided by the NTA but does not purport to be comprehensive or final. Recipients should not rely on the information. Neither the NTA nor any of its directors, officers, employees, agents, stakeholders or advisers make any representation or warranty as to, or accept any liability or responsibility in relation to, the adequacy, accuracy, reasonableness or completeness of the information provided as part of this document or any matter on which the information is based (including but not limited to loss or damage arising as a result of reliance by recipients on the information or any part of it). Any liabilities are hereby expressly disclaimed.



Rev	Date	Drn	Chk'd	App'd	Description
M01	FEB 2023	JBB	EFD	SMG	ISSUE FOR PHASE 4: PLANNING

Client: **NTA**  
 Údarás Náisiúnta Iompair  
 National Transport Authority

Engineering Designer: **CIROD**  
 TYPISA

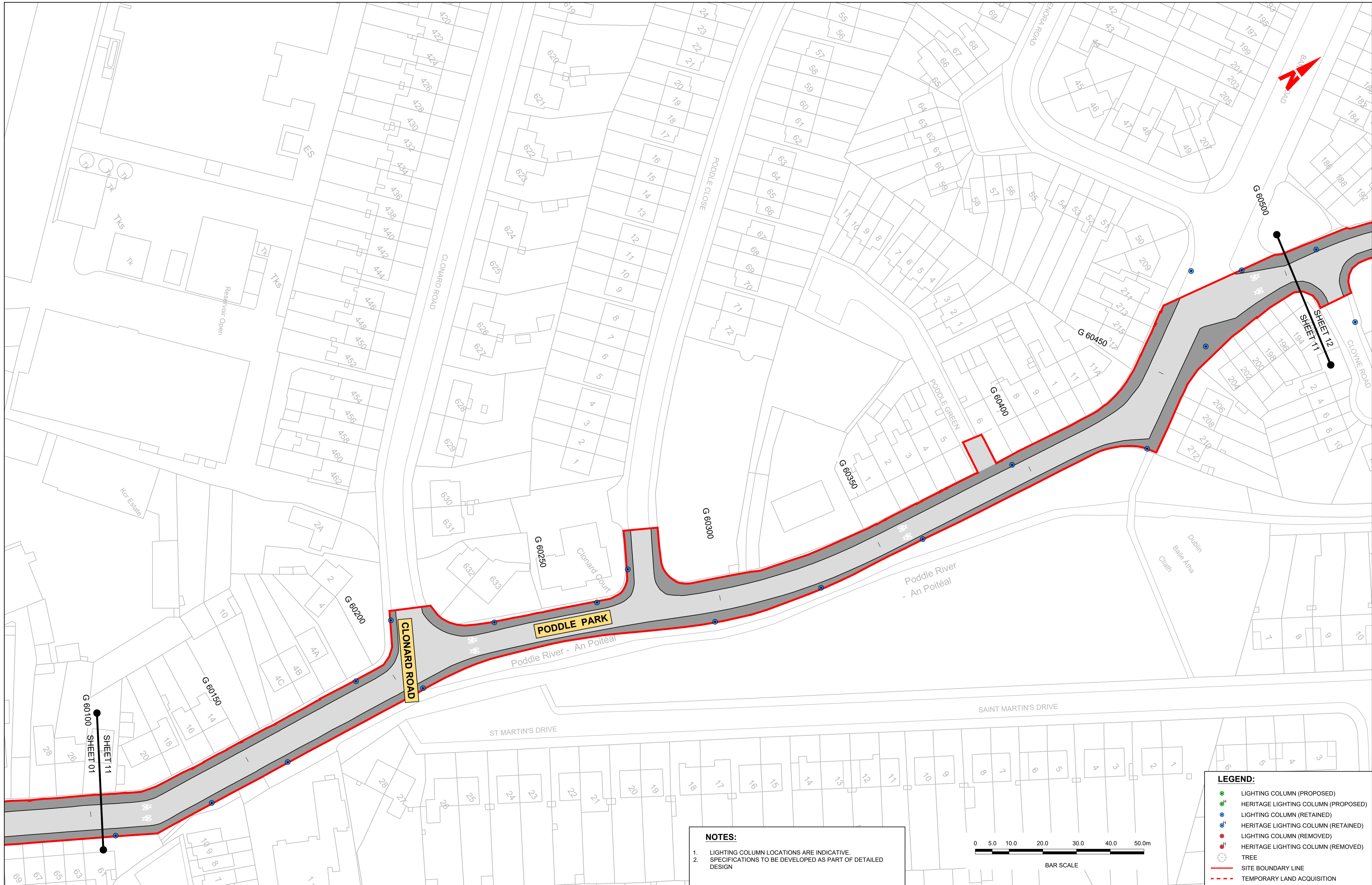
Date: FEB 2023  
 Scale: 1:500 @ A1  
 1:1000 @ A3

Drawn: JBB  
 Checked: EFD  
 Approved: SMG

Programme Code: BCIDD  
 Originator Code: ROT  
 QMS Code:

Programme Title: <b>BUSCONNECTS DUBLIN CORE BUS CORRIDORS INFRASTRUCTURE WORKS</b>			
Drawing Title: <b>KIMMAGE TO CITY CENTRE SCHEME PUBLIC LIGHTING LAYOUT</b>			
Drawing File Name: BCIDD-ROT-LHT_RL-0011_XX_00-DR-EO-0010	Sheet Number: 10 of 14	Status: A	Rev: M01

DO NOT SCALE USE FIGURED DIMENSIONS ONLY



**Disclaimer**  
 a. © National Transport Authority (NTA) 2022. This drawing is confidential and the copyright in it is owned by NTA. This drawing must not be either loaned, copied or otherwise reproduced in whole or in part or used for any purpose without the prior permission of NTA.  
 b. This drawing is to be used for the design element identified in the titleblock. Other information shown is to be considered indicative only. The drawing is to be read in conjunction with all other relevant design drawings.  
 c. O.S. data used for plans are printed under © Ordnance Survey Ireland Government of Ireland. All rights reserved. Licence Number 2022/OSI\_NMA\_180 National Transport Authority. All elevations are in metres and relate to OSI Geoid Model (OSGM15) Mean Head. All Co-ordinates are in Irish

Transverse Mercator Grid (ITM) as defined by OSI active local GPS station.  
 d. Information concerning the position of apparatus shown on this drawing is based on drawings supplied by the utility owners and/or the utility works contractor, whilst every care has been taken in the preparation of this drawing, positions should be taken as approximate and are intended for general guidance only and no representation is made by the NTA as to the accuracy, completeness, sufficiency or otherwise of this drawing and the position of the apparatus. The information contained herein does not purport to be comprehensive or final as the apparatus is subject to being altered and/or superseded. Recipients should not rely on this information. Any liabilities are hereby expressly disclaimed.

e. The information contained herein has been provided by the NTA but does not purport to be comprehensive or final. Recipients should not rely on the information. Neither the NTA nor any of its directors, officers, employees, agents, stakeholders or advisers make any representation or warranty as to, or accept any liability or responsibility in relation to, the adequacy, accuracy, reasonableness or completeness of the information provided as part of this document or any matter on which the information is based (including but not limited to loss or damage arising as a result of reliance by recipients on the information or any part of it). Any liabilities are hereby expressly disclaimed.

**Project Ireland 2040**  
 Building Ireland's Future

Rev	Date	Drm	Chk'd	App'd	Description
M01	FEB 2023	JBB	EFD	SMG	ISSUE FOR PHASE 4: PLANNING

Client: **NTA**  
 Údarás Náisiúnta Iompair  
 National Transport Authority

Engineering Designer: **CIROD**  
 TYPSA

Date: FEB 2023  
 Scale: 1:500 @ A1  
 1:1000 @ A3

Drawn: JBB  
 Checked: EFD  
 Approved: SMG

Programme Code: BCIDD  
 Originator Code: ROT  
 QMS Code:

Programme Title: **BUSCONNECTS DUBLIN**  
**CORE BUS CORRIDORS INFRASTRUCTURE WORKS**

Drawing Title: **KIMMAGE TO CITY CENTRE SCHEME**  
**PUBLIC LIGHTING LAYOUT**

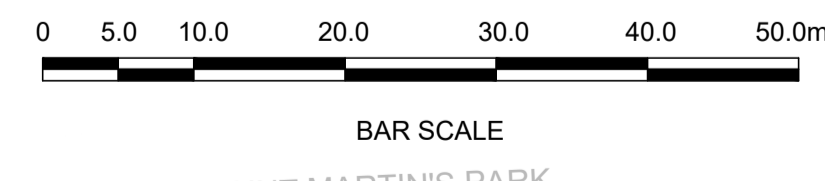
Drawing File Name: BCIDD-ROT-LHT\_RL-0011\_XX\_00-DR-EO-0011  
 Sheet Number: 11 of 14  
 Status: A  
 Rev: M01

DO NOT SCALE USE FIGURED DIMENSIONS ONLY



**LEGEND:**

- LIGHTING COLUMN (PROPOSED)
- HERITAGE LIGHTING COLUMN (PROPOSED)
- LIGHTING COLUMN (RETAINED)
- HERITAGE LIGHTING COLUMN (RETAINED)
- LIGHTING COLUMN (REMOVED)
- HERITAGE LIGHTING COLUMN (REMOVED)
- TREE
- SITE BOUNDARY LINE
- TEMPORARY LAND ACQUISITION



**NOTES:**

- LIGHTING COLUMN LOCATIONS ARE INDICATIVE.
- SPECIFICATIONS TO BE DEVELOPED AS PART OF DETAILED DESIGN

**Disclaimer**

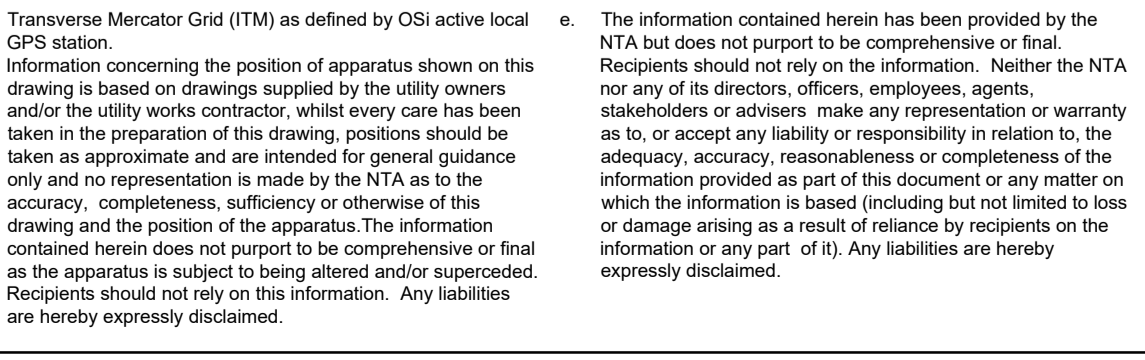
a. © National Transport Authority (NTA) 2022. This drawing is confidential and the copyright in it is owned by NTA. This drawing must not be either loaned, copied or otherwise reproduced in whole or in part or used for any purpose without the prior permission of NTA.

b. This drawing is to be used for the design element identified in the title block. Other information shown is to be considered indicative only. The drawing is to be read in conjunction with all other relevant design drawings.

c. O.S. data used for plans are printed under © Ordnance Survey Ireland Government of Ireland. All rights reserved. Licence Number 2022/OSI\_NMA\_180 National Transport Authority. All elevations are in metres and relate to OSI Geoid Model (OSGM15) Mean Head. All Co-ordinates are in Irish Transverse Mercator Grid (ITM) as defined by OSI active local GPS station.

d. Information concerning the position of apparatus shown on this drawing is based on drawings supplied by the utility owners and/or the utility works contractor, whilst every care has been taken in the preparation of this drawing, positions should be taken as approximate and are intended for general guidance only and no representation is made by the NTA as to the accuracy, completeness, sufficiency or otherwise of this drawing and the position of the apparatus. The information contained herein does not purport to be comprehensive or final as the apparatus is subject to being altered and/or superseded. Recipients should not rely on this information. Any liabilities are hereby expressly disclaimed.

e. The information contained herein has been provided by the NTA but does not purport to be comprehensive or final. Recipients should not rely on the information. Neither the NTA nor any of its directors, officers, employees, agents, stakeholders or advisers make any representation or warranty as to, or accept any liability or responsibility in relation to, the adequacy, accuracy, reasonableness or completeness of the information provided as part of this document or any matter on which the information is based (including but not limited to loss or damage arising as a result of reliance by recipients on the information or any part of it). Any liabilities are hereby expressly disclaimed.



Rev	Date	Drn	Chk'd	App'd	Description
M01	FEB 2023	JBB	EFD	SMG	ISSUE FOR PHASE 4: PLANNING

Client

Engineering Designer

Programme Title  
**BUSCONNECTS DUBLIN  
CORE BUS CORRIDORS INFRASTRUCTURE WORKS**

Drawing Title  
KIMMAGE TO CITY CENTRE SCHEME  
PUBLIC LIGHTING LAYOUT

Drawing File Name  
BCIDD-ROT-LHT\_RL-0011\_XX\_00-DR-EO-0012

Sheet Number  
12 of 14

Status  
A

Rev  
M01

DO NOT SCALE USE FIGURED DIMENSIONS ONLY



**NOTES:**

- LIGHTING COLUMN LOCATIONS ARE INDICATIVE.
- SPECIFICATIONS TO BE DEVELOPED AS PART OF DETAILED DESIGN

**Disclaimer**

a. © National Transport Authority (NTA) 2022. This drawing is confidential and the copyright in it is owned by NTA. This drawing must not be either loaned, copied or otherwise reproduced in whole or in part or used for any purpose without the prior permission of NTA.

b. This drawing is to be used for the design element identified in the titlebox. Other information shown is to be considered indicative only. The drawing is to be read in conjunction with all other relevant design drawings.

c. O.S. data used for plans are printed under © Ordnance Survey Ireland Government of Ireland. All rights reserved. Licence Number 2022/OSI\_NMA\_180 National Transport Authority. All elevations are in metres and relate to OSI Geoid Model (OSGM15) Mean Head. All Co-ordinates are in Irish Transverse Mercator Grid (ITM) as defined by OSI active local GPS station.

d. Information concerning the position of apparatus shown on this drawing is based on drawings supplied by the utility owners and/or the utility works contractor, whilst every care has been taken in the preparation of this drawing, positions should be taken as approximate and are intended for general guidance only and no representation is made by the NTA as to the accuracy, completeness, sufficiency or otherwise of this drawing and the position of the apparatus. The information contained herein does not purport to be comprehensive or final as the apparatus is subject to being altered and/or superseded. Recipients should not rely on this information. Any liabilities are hereby expressly disclaimed.

e. The information contained herein has been provided by the NTA but does not purport to be comprehensive or final. Recipients should not rely on the information. Neither the NTA nor any of its directors, officers, employees, agents, stakeholders or advisers make any representation or warranty as to, or accept any liability or responsibility in relation to, the adequacy, accuracy, reasonableness or completeness of the information provided as part of this document or any matter on which the information is based (including but not limited to loss or damage arising as a result of reliance by recipients on the information or any part of it). Any liabilities are hereby expressly disclaimed.



Rev	Date	Drm	Chk'd	App'd	Description
M01	FEB 2023	JBB	EFD	SMG	ISSUE FOR PHASE 4: PLANNING

Client: **NTA**  
Údarás Náisiúnta Iompair  
National Transport Authority

Date: FEB 2023  
Scale: 1:500 @ A1  
1:1000 @ A3

Engineering Designer: **PROD**  
TYPSA

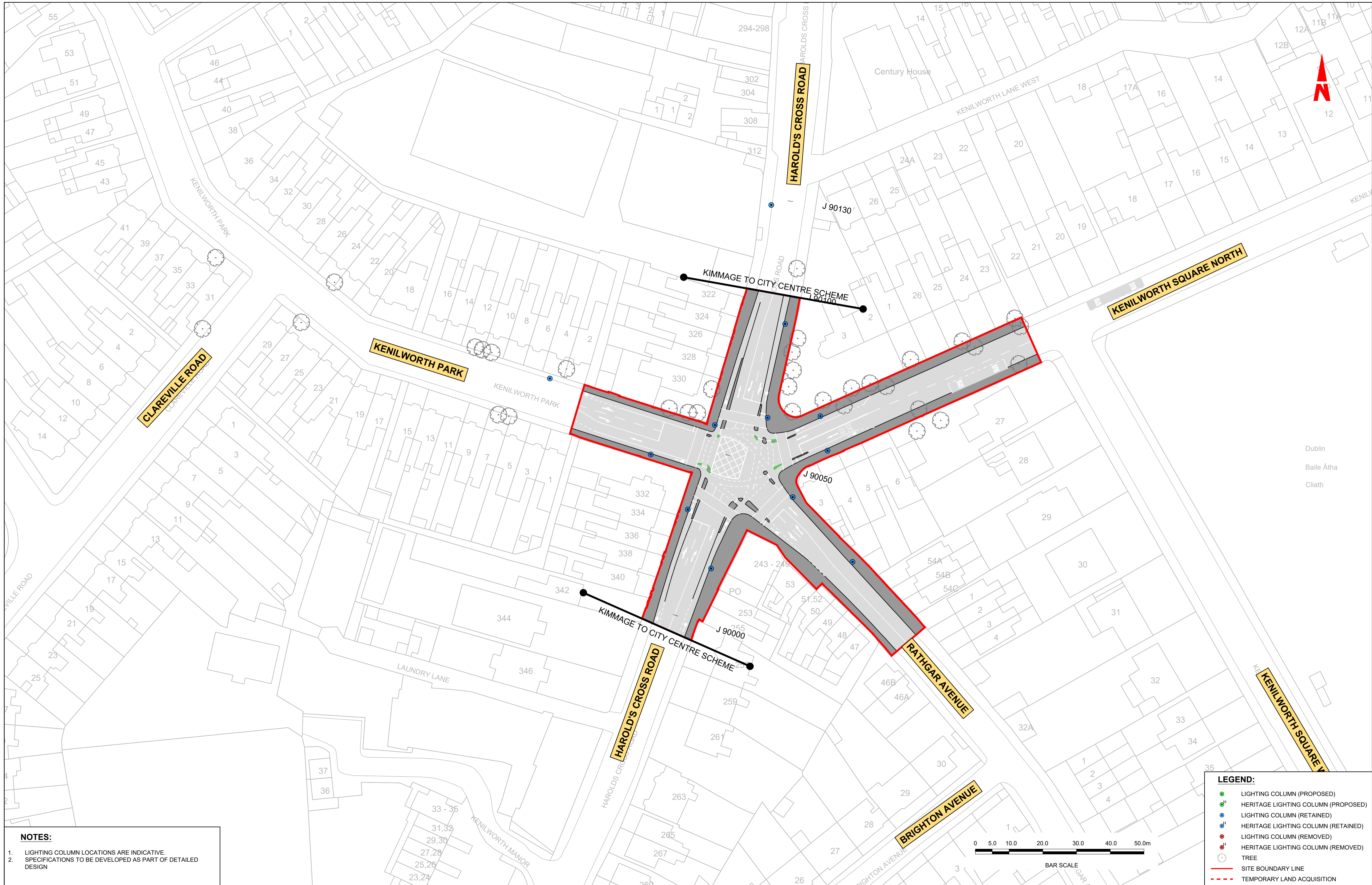
Drawn: JBB  
Checked: EFD  
Approved: SMG

Programme Code: BCIDD  
Originator Code: ROT  
QMS Code:

Programme Title <b>BUSCONNECTS DUBLIN CORE BUS CORRIDORS INFRASTRUCTURE WORKS</b>			
Drawing Title KIMMAGE TO CITY CENTRE SCHEME PUBLIC LIGHTING LAYOUT			
Drawing File Name BCIDD-ROT-LHT_RL-0011_XX_00-DR-EO-0013	Sheet Number 13 of 14	Status A	Rev M01

DO NOT SCALE USE FIGURED DIMENSIONS ONLY



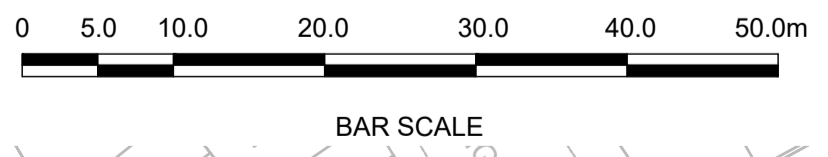


**NOTES:**

- LIGHTING COLUMN LOCATIONS ARE INDICATIVE.
- SPECIFICATIONS TO BE DEVELOPED AS PART OF DETAILED DESIGN

**LEGEND:**

- LIGHTING COLUMN (PROPOSED)
- <sup>H</sup> HERITAGE LIGHTING COLUMN (PROPOSED)
- LIGHTING COLUMN (RETAINED)
- <sup>H</sup> HERITAGE LIGHTING COLUMN (RETAINED)
- LIGHTING COLUMN (REMOVED)
- <sup>H</sup> HERITAGE LIGHTING COLUMN (REMOVED)
- TREE
- SITE BOUNDARY LINE
- TEMPORARY LAND ACQUISITION



Disclaimer  
 a. © National Transport Authority (NTA) 2022. This drawing is confidential and the copyright in it is owned by NTA. This drawing must not be either loaned, copied or otherwise reproduced in whole or in part or used for any purpose without the prior permission of NTA.  
 b. This drawing is to be used for the design element identified in the titleblock. Other information shown is to be considered indicative only. The drawing is to be read in conjunction with all other relevant design drawings.  
 c. O.S. data used for plans are printed under © Ordnance Survey Ireland Government of Ireland. All rights reserved. Licence Number 2022/OSI\_NMA\_180 National Transport Authority. All elevations are in metres and relate to OSI Geoid Model (OSGM15) Mean Head. All Co-ordinates are in Irish Transverse Mercator Grid (ITM) as defined by OSI active local GPS station.  
 d. Information concerning the position of apparatus shown on this drawing is based on drawings supplied by the utility owners and/or the utility works contractor, whilst every care has been taken in the preparation of this drawing, positions should be taken as approximate and are intended for general guidance only and no representation is made by the NTA as to the accuracy, completeness, sufficiency or otherwise of this drawing and the position of the apparatus. The information contained herein does not purport to be comprehensive or final as the apparatus is subject to being altered and/or superseded. Recipients should not rely on this information. Any liabilities are hereby expressly disclaimed.

The information contained herein has been provided by the NTA but does not purport to be comprehensive or final. Recipients should not rely on the information. Neither the NTA nor any of its directors, officers, employees, agents, stakeholders or advisers make any representation or warranty as to, or accept any liability or responsibility in relation to, the adequacy, accuracy, reasonableness or completeness of the information provided as part of this document or any matter on which the information is based (including but not limited to loss or damage arising as a result of reliance by recipients on the information or any part of it). Any liabilities are hereby expressly disclaimed.

**Project Ireland 2040**  
 Building Ireland's Future

Rev	Date	Drm	Chk'd	App'd	Description
M01	FEB 2023	JBB	EFD	SMG	ISSUE FOR PHASE 4: PLANNING

Client: **NTA**  
 Údarás Náisiúnta Iompair  
 National Transport Authority

Date: FEB 2023  
 Scale: 1:500 @ A1  
 1:1000 @ A3

Programme Code: BCIDD  
 Originator Code: ROT

Engineering Designer: **PROD**  
 TYPSA

Drawn: JBB  
 Checked: EFD  
 Approved: SMG

QMS Code

Programme Title: **BUSCONNECTS DUBLIN**  
**CORE BUS CORRIDORS INFRASTRUCTURE WORKS**

Drawing Title: **KIMMAGE TO CITY CENTRE SCHEME**  
**PUBLIC LIGHTING LAYOUT**

Drawing File Name: BCIDD-ROT-LHT\_RL-0011\_XX\_00-DR-EO-0014  
 Sheet Number: 14 of 14  
 Status: A  
 Rev: M01

DO NOT SCALE USE FIGURED DIMENSIONS ONLY