

Pavement
Treatment Plans





BUSCONNECTS DUBLIN CORE BUS CORRIDORS INFRASTRUCTURE WORKS

KIMMAGE TO CITY CENTRE CORE BUS CORRIDOR SCHEME

DRAWING SERIES NUMBER(S)	DRAWING SERIES DESCRIPTION
BCIDD-ROT-PAV_IX-0011_XX_00-DR-CR-001	KIMMAGE TO CITY CENTRE. PAVEMENT TREATMENT PLANS. COVER SHEET
BCIDD-ROT-PAV_KP-0011_XX_00-DR-CR-0001	KIMMAGE TO CITY CENTRE. PAVEMENT TREATMENT PLANS. KEY PLAN
BCIDD-ROT-PAV_PV-0011_XX_00-DR-CR-0001 to 0014	KIMMAGE TO CITY CENTRE. PAVEMENT TREATMENT PLANS. DRAWINGS.

PAVEMENT TREATMENT PLANS

Disclaimer
 a. © National Transport Authority (NTA) 2022. This drawing is confidential and the copyright in it is owned by NTA. This drawing must not be either loaned, copied or otherwise reproduced in whole or in part or used for any purpose without the prior permission of NTA.
 b. This drawing is to be used for the design element identified in the title block. Other information shown is to be considered indicative only. The drawing is to be read in conjunction with all other relevant design drawings.
 c. O.S. data used for plans are printed under © Ordnance Survey Ireland Government of Ireland. All rights reserved. Licence Number 2022/OSI_NMA_180 National Transport Authority. All elevations are in metres and relate to OSI Geoid Model (OSGM15) Mean Head. All Co-ordinates are in Irish

Transverse Mercator Grid (ITM) as defined by OSI active local GPS station.
 d. Information concerning the position of apparatus shown on this drawing is based on drawings supplied by the utility owners and/or the utility works contractor, whilst every care has been taken in the preparation of this drawing, positions should be taken as approximate and are intended for general guidance only and no representation is made by the NTA as to the accuracy, completeness, sufficiency or otherwise of this drawing and the position of the apparatus. The information contained herein does not purport to be comprehensive or final as the apparatus is subject to being altered and/or superceded. Recipients should not rely on this information. Any liabilities are hereby expressly disclaimed.

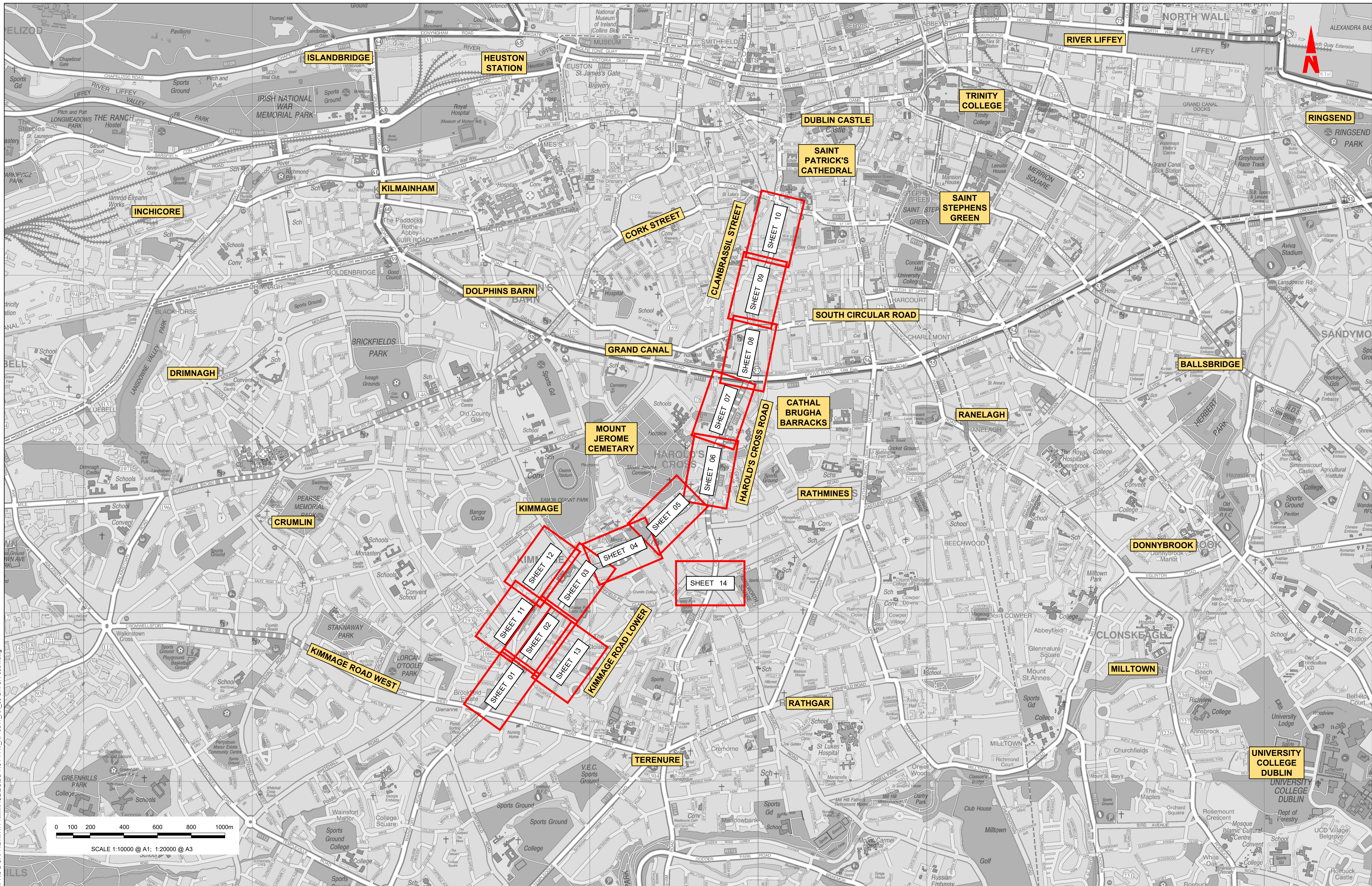
e. The information contained herein has been provided by the NTA but does not purport to be comprehensive or final. Recipients should not rely on the information. Neither the NTA nor any of its directors, officers, employees, agents, stakeholders or advisers make any representation or warranty as to, or accept any liability or responsibility in relation to, the adequacy, accuracy, reasonableness or completeness of the information provided as part of this document or any matter on which the information is based (including but not limited to loss or damage arising as a result of reliance by recipients on the information or any part of it). Any liabilities are hereby expressly disclaimed.

Rev	Date	Drn	Chk'd	App'd	Description
M01	FEB 2023	SCH	EFD	SMG	ISSUE FOR PHASE 4: PLANNING



Client NTA Údarás Náisiúnta Iompair National Transport Authority		Engineering Designer ROD ROUGHAN & O'DONOVAN TYPESA		
Date FEB 2023	Scale 1:10000 @ A1 1:20000 @ A3	Drawn SCH	Checked EFD	Approved SMG
Project Code BCIDD	Originator Code ROT	QMS Code		

Programme Title BUSCONNECTS DUBLIN CORE BUS CORRIDORS INFRASTRUCTURE WORKS			
Drawing Title KIMMAGE TO CITY CENTRE SCHEME PAVEMENT TREATMENT PLANS. COVERSHEET			
Drawing File Name BCIDD-ROT-PAV_IX-0011_XX_00-DR-CR-0001	Sheet Number 01 of 01	Status A	Rev M01



0 100 200 400 600 800 1000m
 SCALE 1:10000 @ A1; 1:20000 @ A3

2. © National Transport Authority (NTA) 2021. This drawing is confidential and the copyright in it is owned by NTA. This drawing must not be either loaned, copied or otherwise reproduced in whole or in part or used for any purpose without the prior permission of NTA.
 3. This drawing is to be used for the design element identified in the titleblock. Other information shown is to be considered indicative only. The drawing is to be read in conjunction with all other relevant design drawings.
 4. OS data used for plans are printed under © Ordnance Survey Ireland Government of Ireland. All rights reserved. Licence Number 2021/OSI_NMA_180 National Transport Authority. All elevations are in metres and relate to OSI Geoid Model (OSGM15) Mean Head. All Co-ordinates are in Irish Transverse Mercator Grid (ITM) as defined by OSI active local GPS station.
 5. Information concerning the position of apparatus shown on this drawing is based on drawings supplied by the utility owners and/or the utility works contractor, whilst every care has been taken in the preparation of this drawing, positions should be taken as approximate and are intended for general guidance only and no representation is made by the NTA as to the accuracy, completeness, sufficiency or otherwise of this drawing and the position of the apparatus. The information contained herein does not purport to be comprehensive or final as the apparatus is subject to being altered and/or superseded. Recipients should not rely on this information. Any liabilities are hereby expressly disclaimed.

The information contained herein has been provided by the NTA but does not purport to be comprehensive or final. Recipients should not rely on the information. Neither the NTA nor any of its directors, officers, employees, agents, stakeholders or advisers make any representation or warranty as to, or accept any liability or responsibility in relation to, the adequacy, accuracy, reasonableness or completeness of the information provided as part of this document or any matter on which the information is based (including but not limited to loss or damage arising as a result of reliance by recipients on the information or any part of it). Any liabilities are hereby expressly disclaimed.

Rev	Date	Drn	Chk'd	App'd	Description
M01	FEB 2023	SCH	EFD	SMG	ISSUED FOR PHASE 4: PLANNING

Client: **NTA**
 Údarás Náisiúnta Iompair
 National Transport Authority

Engineering Designer:
CIROD
 TYPSA

Date: FEB 2023
 Scale: 1:10000 @ A1
 1:20000 @ A3

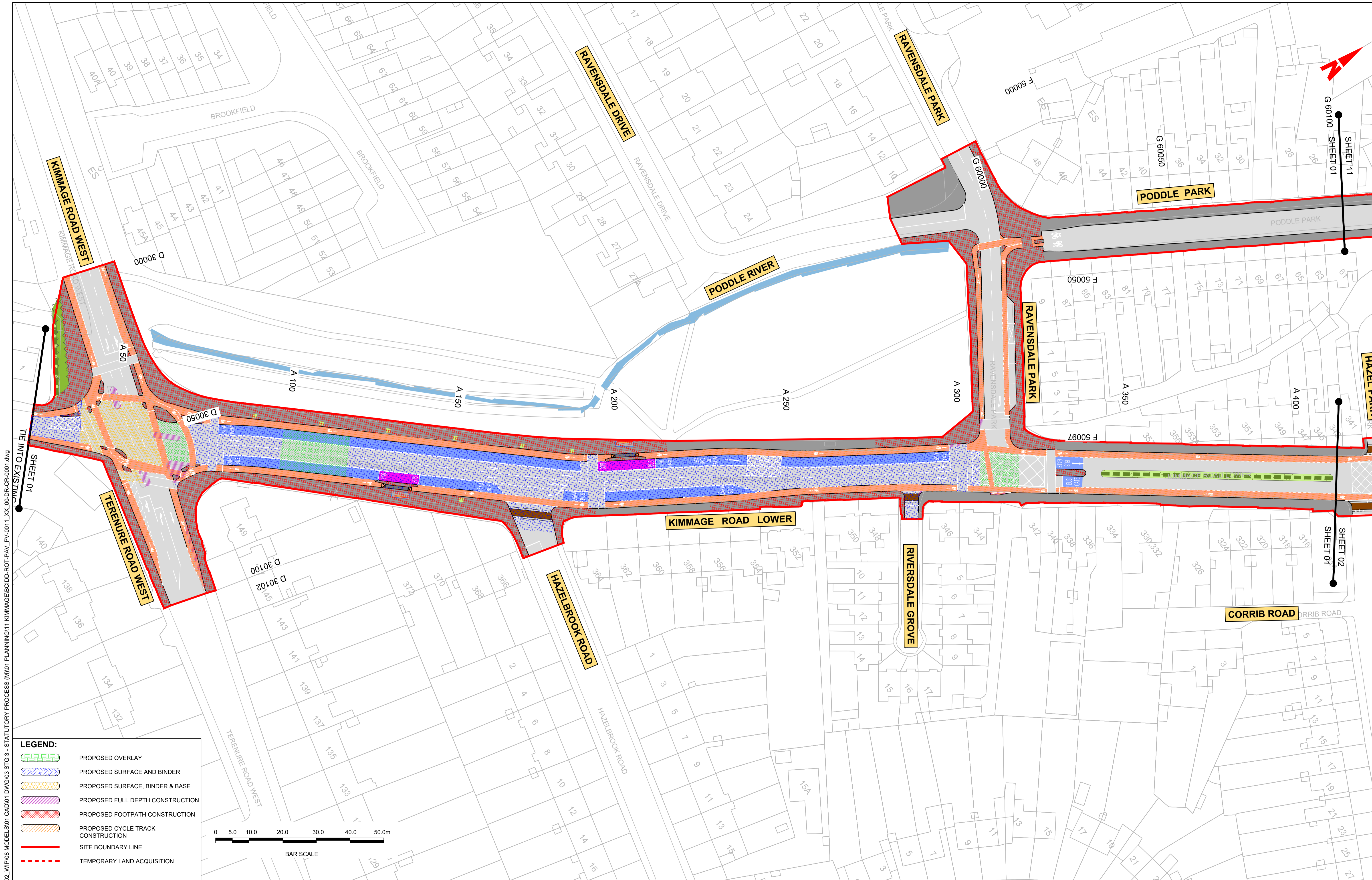
Drawn: SCH
 Checked: EFD
 Approved: SMG

Programme Code: BCIDD
 Originator Code: ROT

QMS Code:

Programme Title				
BUSCONNECTS DUBLIN CORE BUS CORRIDORS INFRASTRUCTURE WORKS				
Drawing Title				
KIMMAGE TO CITY CENTRE SCHEME PAVEMENT TREATMENT PLANS KEYPLAN				
Drawing File Name	Sheet Number	Status	Rev	
BCIDD-ROT-PAV_KP-0011_XX_00-DR-CR-0001	01 of 01	A	M01	

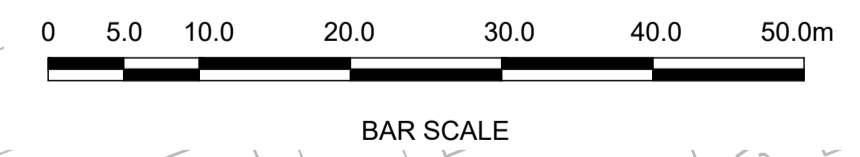
DO NOT SCALE USE FIGURED DIMENSIONS ONLY



W:\p008\1719117-02_WIP\08 MODELS\01 CAD\01 DWG\03 STG 3 - STATUTORY PROCESS (M)\01 PLANNING\11 KIMMAGE\BCIDD-ROT-PAV_PV-0011_XX_00-DR-CR-0001.dwg
 SHEET 01 THE INTO EXISTING

LEGEND:

- PROPOSED OVERLAY
- PROPOSED SURFACE AND BINDER
- PROPOSED SURFACE, BINDER & BASE
- PROPOSED FULL DEPTH CONSTRUCTION
- PROPOSED FOOTPATH CONSTRUCTION
- PROPOSED CYCLE TRACK CONSTRUCTION
- SITE BOUNDARY LINE
- TEMPORARY LAND ACQUISITION



Disclaimer

a. © National Transport Authority (NTA) 2022. This drawing is confidential and the copyright in it is owned by NTA. This drawing must not be either loaned, copied or otherwise reproduced in whole or in part or used for any purpose without the prior permission of NTA.

b. This drawing is to be used for the design element identified in the titlebox. Other information shown is to be considered indicative only. The drawing is to be read in conjunction with all other relevant design drawings.

c. O.S. data used for plans are printed under © Ordnance Survey Ireland Government of Ireland. All rights reserved. Licence Number 2022/OSI_NMA_180 National Transport Authority. All elevations are in metres and relate to OSI Geoid Model (OSGM15) Mean Head. All Co-ordinates are in Irish Transverse Mercator Grid (ITM) as defined by OSI active local GPS station.

d. Information concerning the position of apparatus shown on this drawing is based on drawings supplied by the utility owners and/or the utility works contractor, whilst every care has been taken in the preparation of this drawing, positions should be taken as approximate and are intended for general guidance only and no representation is made by the NTA as to the accuracy, completeness, sufficiency or otherwise of this drawing and the position of the apparatus. The information contained herein does not purport to be comprehensive or final as the apparatus is subject to being altered and/or superceded. Recipients should not rely on this information. Any liabilities are hereby expressly disclaimed.

e. The information contained herein has been provided by the NTA but does not purport to be comprehensive or final. Recipients should not rely on the information. Neither the NTA nor any of its directors, officers, employees, agents, stakeholders or advisers make any representation or warranty as to, or accept any liability or responsibility in relation to, the adequacy, accuracy, reasonableness or completeness of the information provided as part of this document or any matter on which the information is based (including but not limited to loss or damage arising as a result of reliance by recipients on the information or any part of it). Any liabilities are hereby expressly disclaimed.



Rev	Date	Drn	Chk'd	App'd	Description
M01	FEB 2023	JGO	EFD	SMG	ISSUED FOR PHASE 4: PLANNING

Client: **NTA**
 Údarás Náisiúnta Iompair
 National Transport Authority

Engineering Designer: **CIROD**
 TYPISA

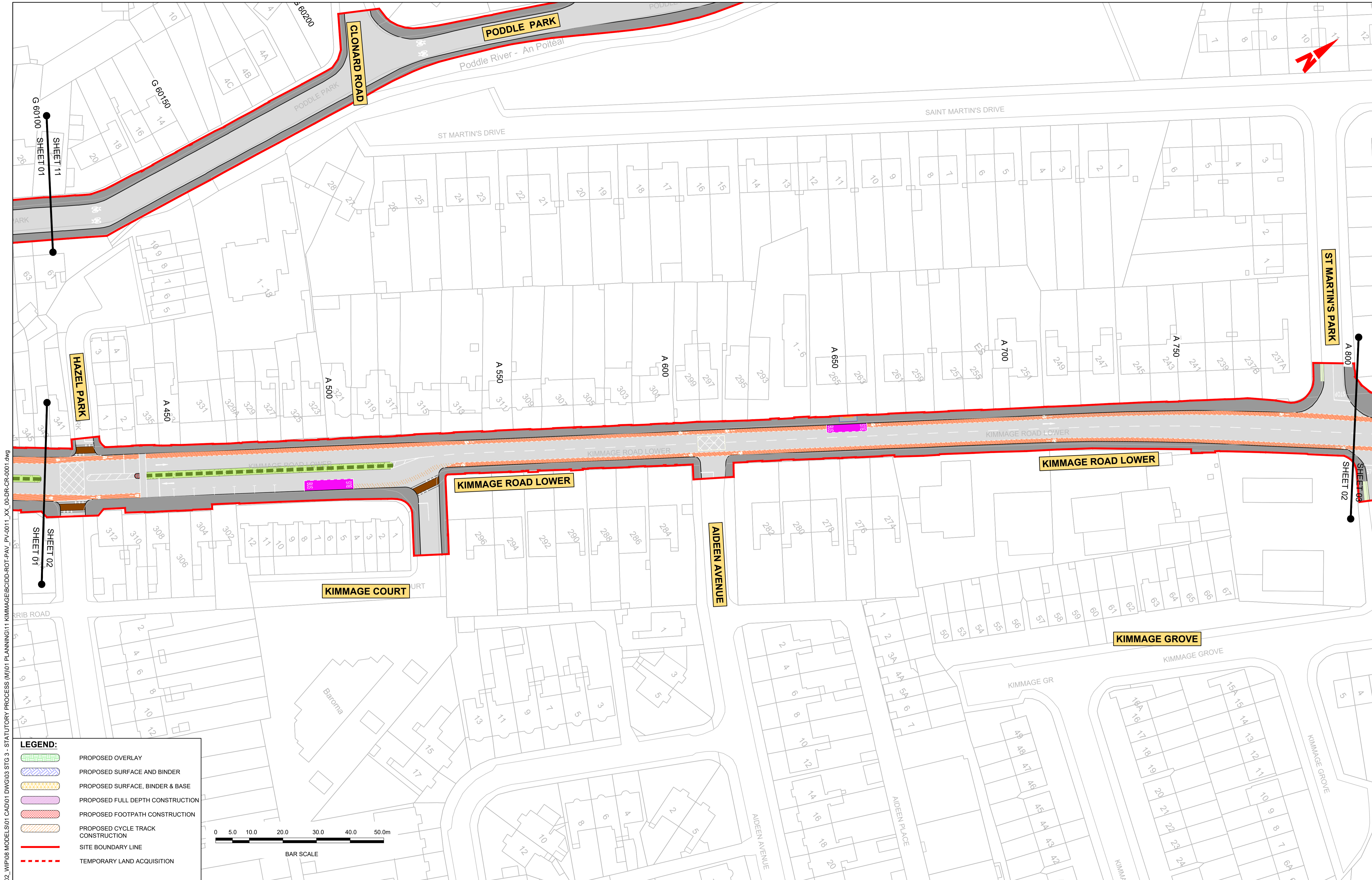
Date: FEB 2023
 Scale: 1:500 @ A1, 1:1,000 @ A3

Programme Code: BCIDD
 Originator Code: ROT

Drawn: JGO
 Checked: EFD
 Approved: SMG

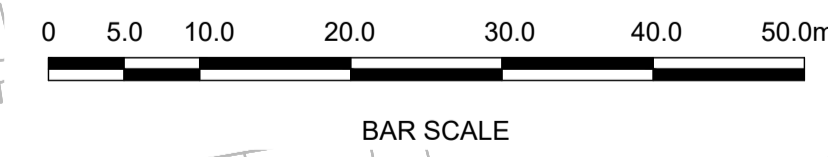
Programme Title: BUSCONNECTS DUBLIN CORE BUS CORRIDORS INFRASTRUCTURE WORKS			
Drawing Title: KIMMAGE TO CITY CENTRE CORE BUS CORRIDOR SCHEME PAVEMENT TREATMENT PLANS			
Drawing File Name: BCIDD-ROT-PAV_PV-0011_XX_00-DR-CR-0001	Sheet Number: 01 of 14	Status: A	Rev: M01

DO NOT SCALE USE FIGURED DIMENSIONS ONLY



LEGEND:

	PROPOSED OVERLAY
	PROPOSED SURFACE AND BINDER
	PROPOSED SURFACE, BINDER & BASE
	PROPOSED FULL DEPTH CONSTRUCTION
	PROPOSED FOOTPATH CONSTRUCTION
	PROPOSED CYCLE TRACK CONSTRUCTION
	SITE BOUNDARY LINE
	TEMPORARY LAND ACQUISITION



Disclaimer:

a. © National Transport Authority (NTA) 2022. This drawing is confidential and the copyright in it is owned by NTA. This drawing must not be either loaned, copied or otherwise reproduced in whole or in part or used for any purpose without the prior permission of NTA.

b. This drawing is to be used for the design element identified in the titleblock. Other information shown is to be considered indicative only. The drawing is to be read in conjunction with all other relevant design drawings.

c. O.S. data used for plans are printed under © Ordnance Survey Ireland Government of Ireland. All rights reserved. Licence Number 2022/OSI_NMA_180 National Transport Authority. All elevations are in metres and relate to OSI Geoid Model (OSGM15) Mean Head. All Co-ordinates are in Irish Transverse Mercator Grid (ITM) as defined by OSI active local GPS station.

d. Information concerning the position of apparatus shown on this drawing is based on drawings supplied by the utility owners and/or the utility works contractor, whilst every care has been taken in the preparation of this drawing, positions should be taken as approximate and are intended for general guidance only and no representation is made by the NTA as to the accuracy, completeness, sufficiency or otherwise of this drawing and the position of the apparatus. The information contained herein does not purport to be comprehensive or final as the apparatus is subject to being altered and/or superceded. Recipients should not rely on this information. Any liabilities are hereby expressly disclaimed.

e. The information contained herein has been provided by the NTA but does not purport to be comprehensive or final. Recipients should not rely on the information. Neither the NTA nor any of its directors, officers, employees, agents, stakeholders or advisers make any representation or warranty as to, or accept any liability or responsibility in relation to, the adequacy, accuracy, reasonableness or completeness of the information provided as part of this document or any matter on which the information is based (including but not limited to loss or damage arising as a result of reliance by recipients on the information or any part of it). Any liabilities are hereby expressly disclaimed.



Rev	Date	Drn	Chk'd	App'd	Description
M01	FEB 2023	JGO	EFD	SMG	ISSUED FOR PHASE 4: PLANNING

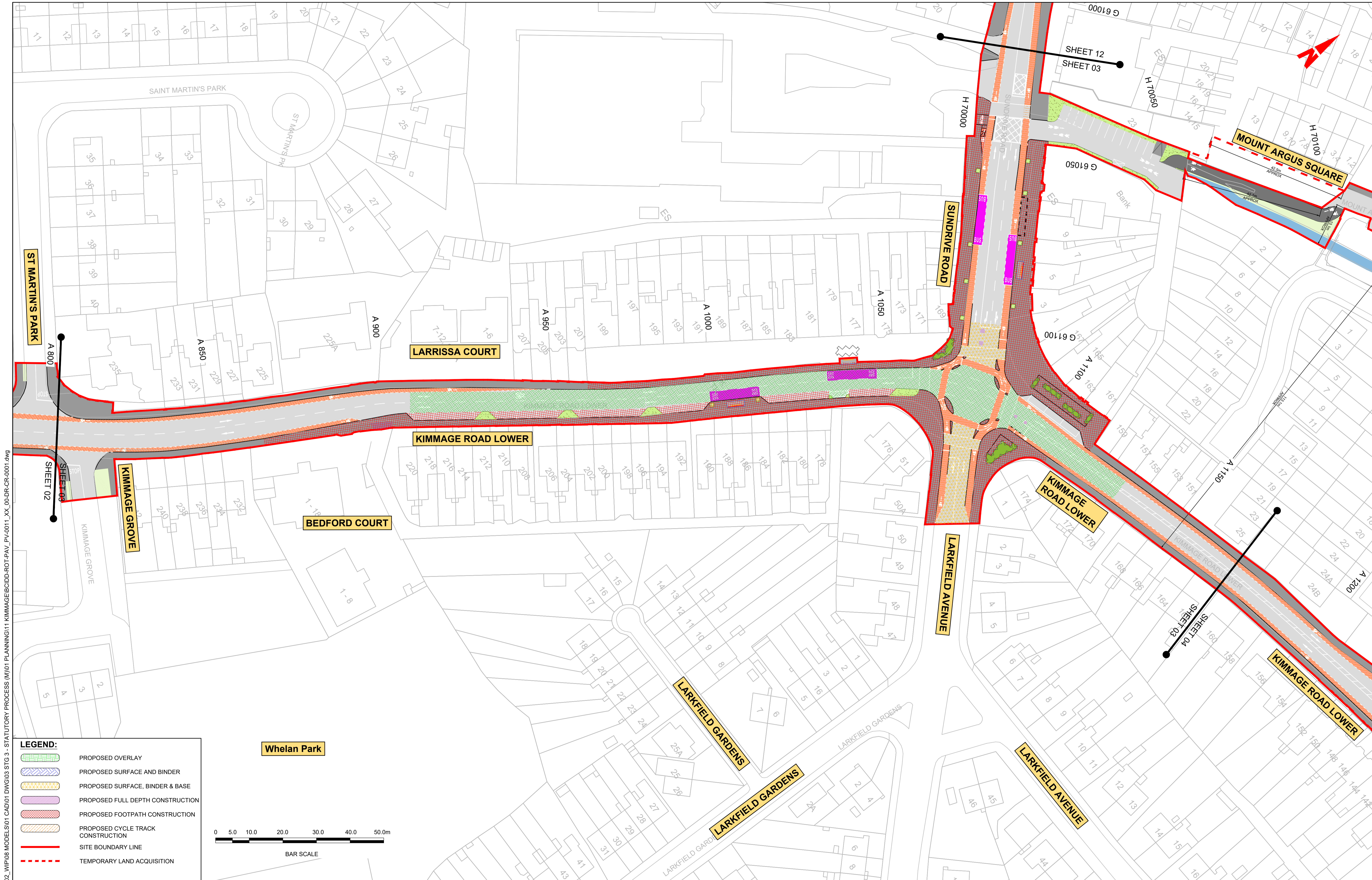
Client

Date: FEB 2023
 Scale: 1:500 @ A1, 1:1,000 @ A3
 Programme Code: BCIDD
 Originator Code: ROT

Engineering Designer

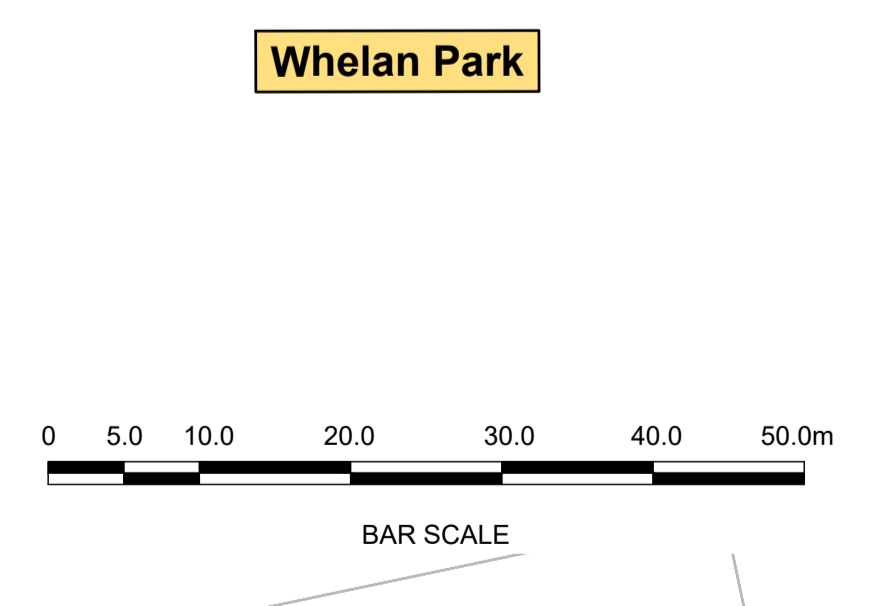
Drawn: JGO
 Checked: EFD
 Approved: SMG

Programme Title BUSCONNECTS DUBLIN CORE BUS CORRIDORS INFRASTRUCTURE WORKS			
Drawing Title KIMMAGE TO CITY CENTRE CORE BUS CORRIDOR SCHEME PAVEMENT TREATMENT PLANS			
Drawing File Name BCIDD-ROT-PAV_PV-0011_XX_00-DR-CR-0002	Sheet Number 02 of 14	Status A	Rev M01



LEGEND:

- PROPOSED OVERLAY
- PROPOSED SURFACE AND BINDER
- PROPOSED SURFACE, BINDER & BASE
- PROPOSED FULL DEPTH CONSTRUCTION
- PROPOSED FOOTPATH CONSTRUCTION
- PROPOSED CYCLE TRACK CONSTRUCTION
- SITE BOUNDARY LINE
- TEMPORARY LAND ACQUISITION



Disclaimer

a. © National Transport Authority (NTA) 2022. This drawing is confidential and the copyright in it is owned by NTA. This drawing must not be either loaned, copied or otherwise reproduced in whole or in part or used for any purpose without the prior permission of NTA.

b. This drawing is to be used for the design element identified in the title block. Other information shown is to be considered indicative only. The drawing is to be read in conjunction with all other relevant design drawings.

c. O.S. data used for plans are printed under © Ordnance Survey Ireland Government of Ireland. All rights reserved. Licence Number 2022/OSI_NMA_180 National Transport Authority. All elevations are in metres and relate to OSI Geoid Model (OSGM15) Mean Head. All Co-ordinates are in Irish Transverse Mercator Grid (ITM) as defined by OSI active local GPS station.

d. Information concerning the position of apparatus shown on this drawing is based on drawings supplied by the utility owners and/or the utility works contractor, whilst every care has been taken in the preparation of this drawing, positions should be taken as approximate and are intended for general guidance only and no representation is made by the NTA as to the accuracy, completeness, sufficiency or otherwise of this drawing and the position of the apparatus. The information contained herein does not purport to be comprehensive or final as the apparatus is subject to being altered and/or superseded. Recipients should not rely on this information. Any liabilities are hereby expressly disclaimed.

e. The information contained herein has been provided by the NTA but does not purport to be comprehensive or final. Recipients should not rely on the information. Neither the NTA nor any of its directors, officers, employees, agents, stakeholders or advisers make any representation or warranty as to, or accept any liability or responsibility in relation to, the adequacy, accuracy, reasonableness or completeness of the information provided as part of this document or any matter on which the information is based (including but not limited to loss or damage arising as a result of reliance by recipients on the information or any part of it). Any liabilities are hereby expressly disclaimed.



Rev	Date	Drn	Chk'd	App'd	Description
M01	FEB 2023	JGO	EFD	SMG	ISSUED FOR PHASE 4: PLANNING

Client: **NTA**
Údarás Náisiúnta Iompair
National Transport Authority

Engineering Designer: **CIROD**
TYPSA

Date: FEB 2023
Scale: 1:500 @ A1
1:1,000 @ A3

Drawn: JGO
Checked: EFD
Approved: SMG

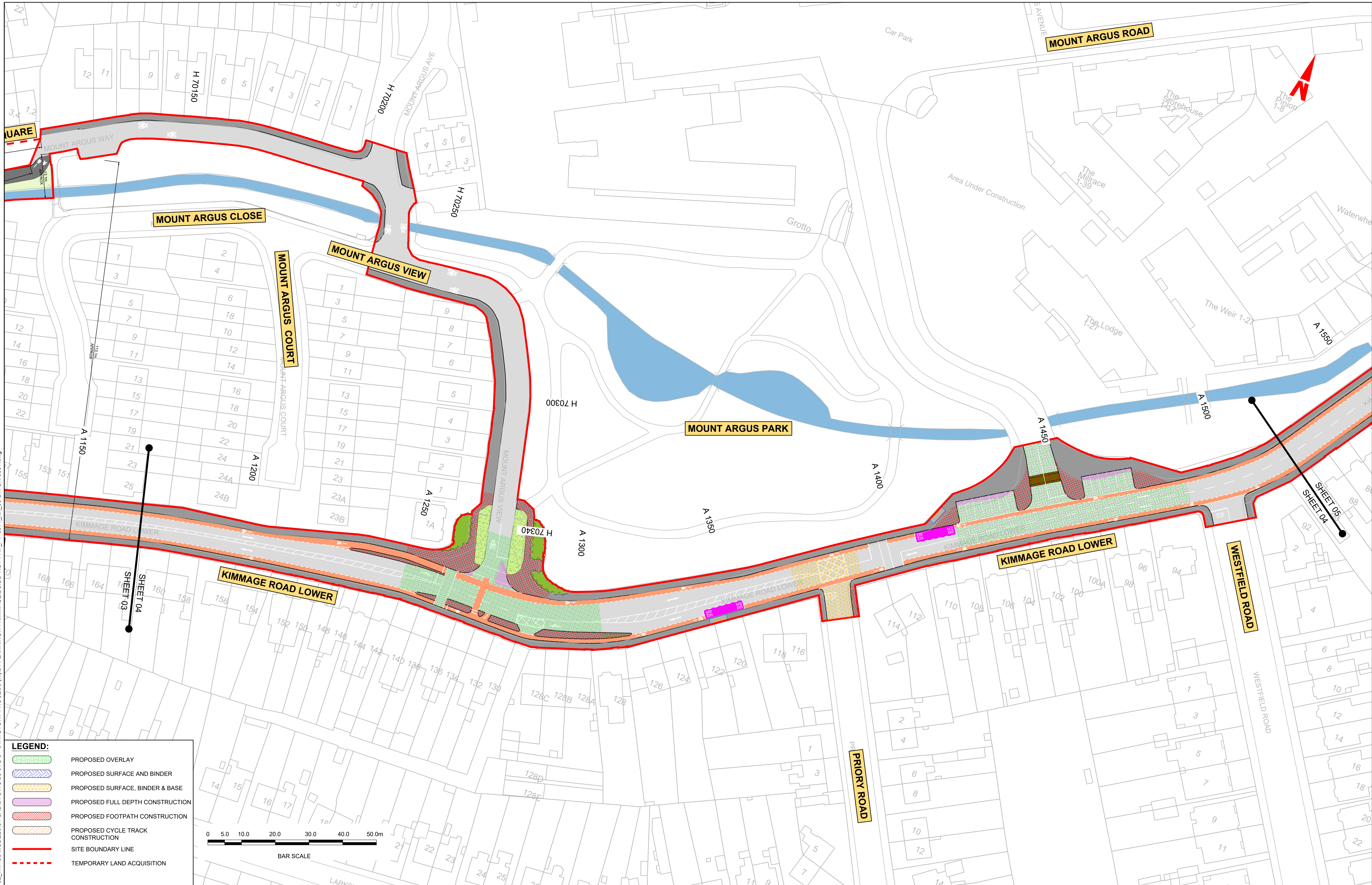
Programme Code: BCIDD
Originator Code: ROT

QMS Code:

Programme Title: BUSCONNECTS DUBLIN CORE BUS CORRIDORS INFRASTRUCTURE WORKS			
Drawing Title: KIMMAGE TO CITY CENTRE CORE BUS CORRIDOR SCHEME PAVEMENT TREATMENT PLANS			
Drawing File Name: BCIDD-ROT-PAV_PV-0011_XX_00-DR-CR-0003	Sheet Number: 03 of 14	Status: A	Rev: M01

DO NOT SCALE USE FIGURED DIMENSIONS ONLY

\\produbp1\j\2019\19117-02_WIP\08 MODELS\01 CAD\01 DWG\03 STG 3 - STATUTORY PROCESS (M)\01 PLANNING\11 KIMMAGE\BCIDD-ROT-PAV_PV-0011_XX_00-DR-CR-0001.dwg



Disclaimer
 a. © National Transport Authority (NTA) 2022. This drawing is confidential and the copyright in it is owned by NTA. This drawing must not be either loaned, copied or otherwise reproduced in whole or in part or used for any purpose without the prior permission of NTA.
 b. This drawing is to be used for the design element identified in the titleblock. Other information shown is to be considered indicative only. The drawing is to be read in conjunction with all other relevant design drawings.
 c. O.S. data used for plans are printed under © Ordnance Survey Ireland Government of Ireland. All rights reserved. Licence Number 2022/OSI_NMA_180 National Transport Authority. All elevations are in metres and relate to OSI Geoid Model (OSGM15) Mean Head. All Co-ordinates are in Irish

Transverse Mercator Grid (ITM) as defined by OSI active local GPS station.
 d. Information concerning the position of apparatus shown on this drawing is based on drawings supplied by the utility owners and/or the utility works contractor, whilst every care has been taken in the preparation of this drawing, positions should be taken as approximate and are intended for general guidance only and no representation is made by the NTA as to the accuracy, completeness, sufficiency or otherwise of this drawing and the position of the apparatus. The information contained herein does not purport to be comprehensive or final as the apparatus is subject to being altered and/or superceded. Recipients should not rely on this information. Any liabilities are hereby expressly disclaimed.

The information contained herein has been provided by the NTA but does not purport to be comprehensive or final. Recipients should not rely on the information. Neither the NTA nor any of its directors, officers, employees, agents, stakeholders or advisers make any representation or warranty as to, or accept any liability or responsibility in relation to, the adequacy, accuracy, reasonableness or completeness of the information provided as part of this document or any matter on which the information is based (including but not limited to loss or damage arising as a result of reliance by recipients on the information or any part of it). Any liabilities are hereby expressly disclaimed.

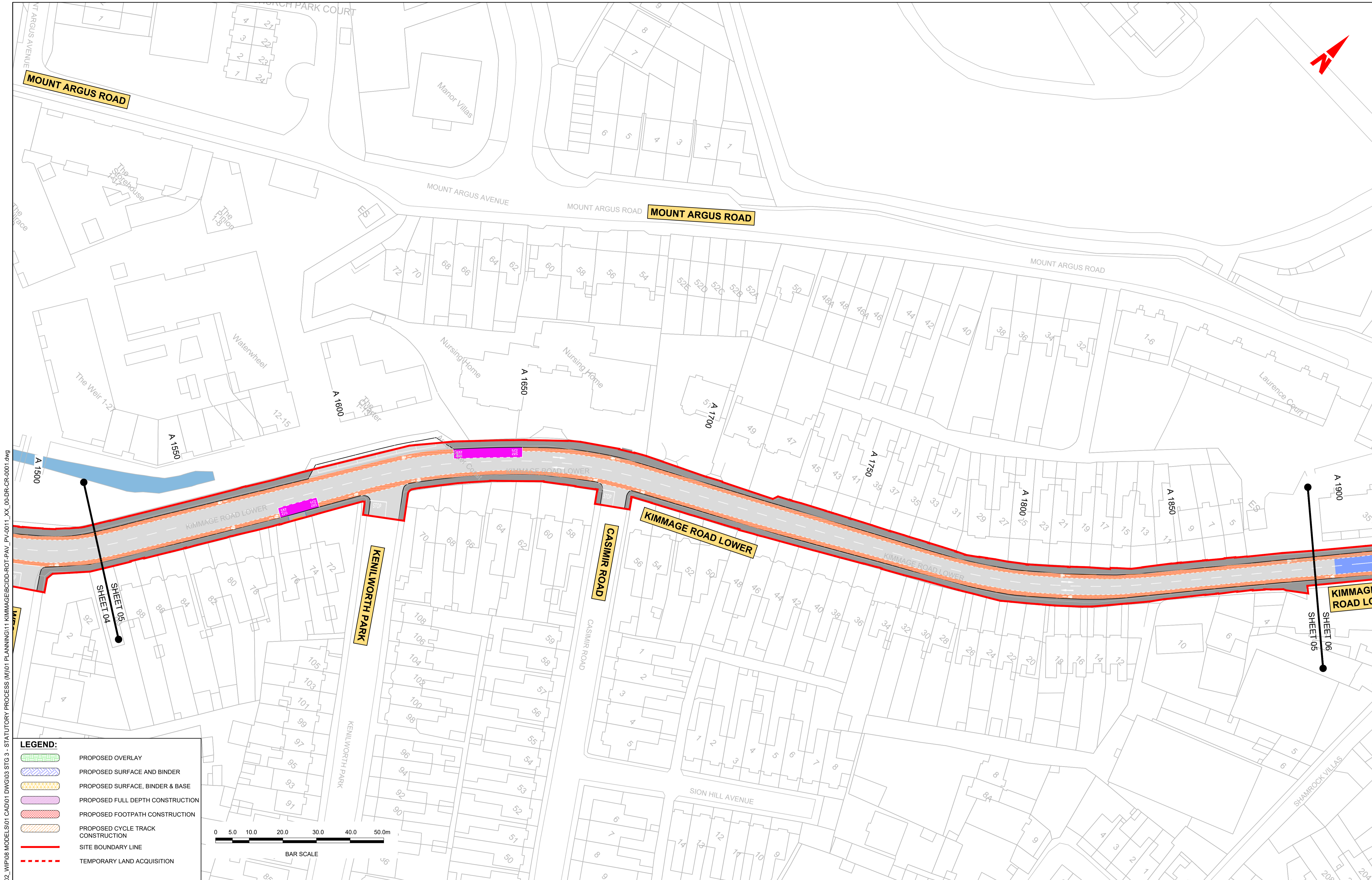


Rev	Date	Drn	Chk'd	App'd	Description
M01	FEB 2023	JGO	EFD	SMG	ISSUED FOR PHASE 4: PLANNING

Client NTA Údarás Náisiúnta Iompair National Transport Authority		Engineering Designer PROUD TYPSA		
Date FEB 2023	Scale 1:500 @ A1 1:1,000 @ A3	Drawn JGO	Checked EFD	Approved SMG
Programme Code BCIDD	Originator Code ROT	QMS Code		

Programme Title BUSCONNECTS DUBLIN CORE BUS CORRIDORS INFRASTRUCTURE WORKS			
Drawing Title KIMMAGE TO CITY CENTRE CORE BUS CORRIDOR SCHEME PAVEMENT TREATMENT PLANS			
Drawing File Name BCIDD-ROT-PAV_PV-0011_XX_00-DR-CR-0004	Sheet Number 04 of 14	Status A	Rev M01

DO NOT SCALE USE FIGURED DIMENSIONS ONLY



LEGEND:

- PROPOSED OVERLAY
- PROPOSED SURFACE AND BINDER
- PROPOSED SURFACE, BINDER & BASE
- PROPOSED FULL DEPTH CONSTRUCTION
- PROPOSED FOOTPATH CONSTRUCTION
- PROPOSED CYCLE TRACK CONSTRUCTION
- SITE BOUNDARY LINE
- TEMPORARY LAND ACQUISITION



Disclaimer

a. © National Transport Authority (NTA) 2022. This drawing is confidential and the copyright in it is owned by NTA. This drawing must not be either loaned, copied or otherwise reproduced in whole or in part or used for any purpose without the prior permission of NTA.

b. This drawing is to be used for the design element identified in the titlebox. Other information shown is to be considered indicative only. The drawing is to be read in conjunction with all other relevant design drawings.

c. O.S. data used for plans are printed under © Ordnance Survey Ireland Government of Ireland. All rights reserved. Licence Number 2022/OSI_NMA_180 National Transport Authority. All elevations are in metres and relate to OSI Geoid Model (OSGM15) Mean Head. All Co-ordinates are in Irish Transverse Mercator Grid (ITM) as defined by OSI active local GPS station.

d. Information concerning the position of apparatus shown on this drawing is based on drawings supplied by the utility owners and/or the utility works contractor, whilst every care has been taken in the preparation of this drawing, positions should be taken as approximate and are intended for general guidance only and no representation is made by the NTA as to the accuracy, completeness, sufficiency or otherwise of this drawing and the position of the apparatus. The information contained herein does not purport to be comprehensive or final as the apparatus is subject to being altered and/or superceded. Recipients should not rely on this information. Any liabilities are hereby expressly disclaimed.

e. The information contained herein has been provided by the NTA but does not purport to be comprehensive or final. Recipients should not rely on the information. Neither the NTA nor any of its directors, officers, employees, agents, stakeholders or advisers make any representation or warranty as to, or accept any liability or responsibility in relation to, the adequacy, accuracy, reasonableness or completeness of the information provided as part of this document or any matter on which the information is based (including but not limited to loss or damage arising as a result of reliance by recipients on the information or any part of it). Any liabilities are hereby expressly disclaimed.



Rev	Date	Drn	Chk'd	App'd	Description
M01	FEB 2023	JGO	EFD	SMG	ISSUED FOR PHASE 4: PLANNING

Client: **NTA**
Údarás Náisiúnta Iompair
National Transport Authority

Engineering Designer: **CIROD**
TYPSA

Date: FEB 2023
Scale: 1:500 @ A1
1:1,000 @ A3

Programme Code: BCIDD
Originator Code: ROT

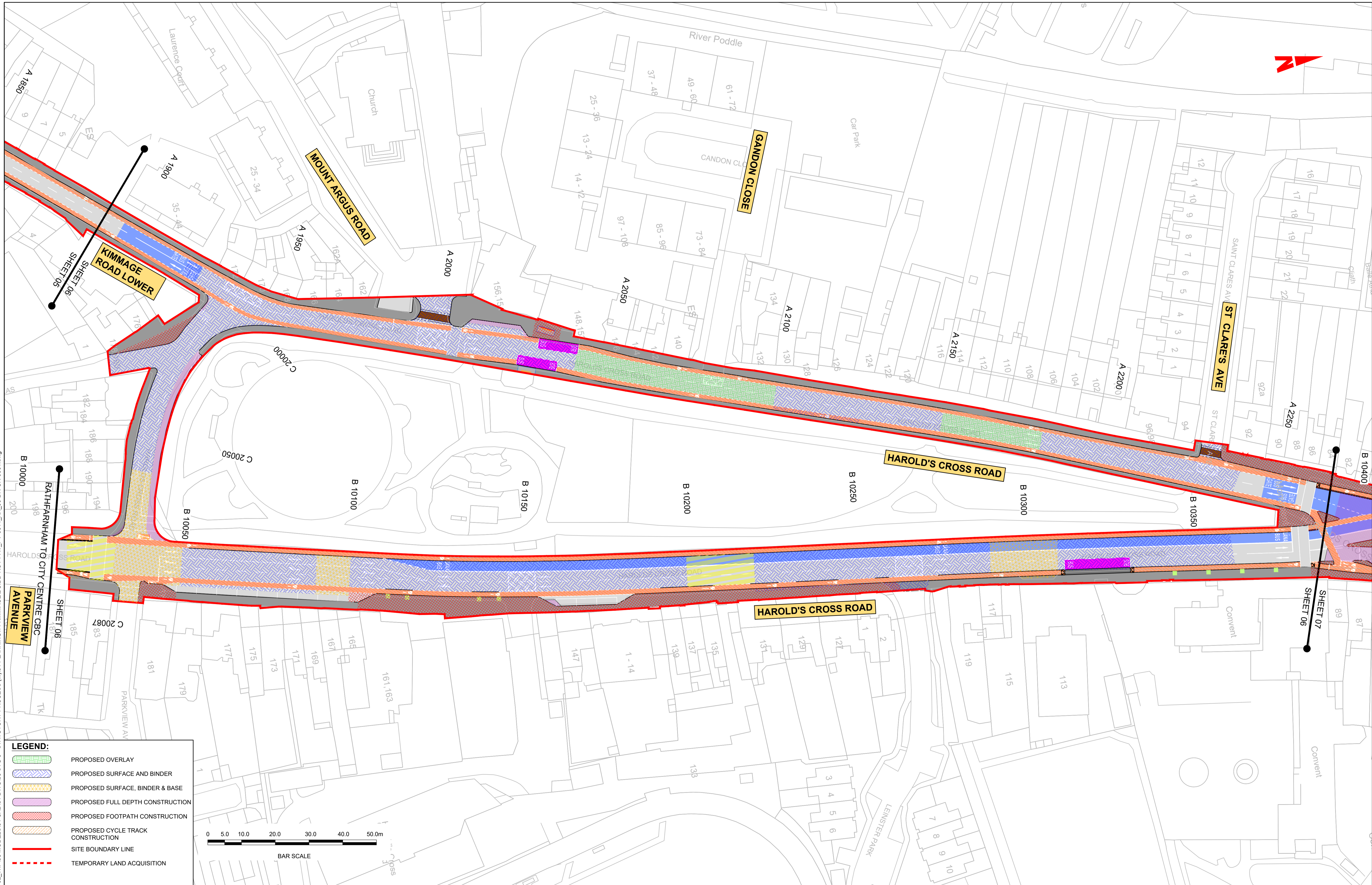
Drawn: JGO
Checked: EFD
Approved: SMG

QMS Code

Programme Title BUSCONNECTS DUBLIN CORE BUS CORRIDORS INFRASTRUCTURE WORKS			
Drawing Title KIMMAGE TO CITY CENTRE CORE BUS CORRIDOR SCHEME PAVEMENT TREATMENT PLANS			
Drawing File Name BCIDD-ROT-PAV_PV-0011_XX_00-DR-CR-0005	Sheet Number 05 of 14	Status A	Rev M01

DO NOT SCALE USE FIGURED DIMENSIONS ONLY

\\wddubp1u20191917117-02_WIP08 MODELS01 CAD01 PLANNING11 KIMMAGE\BCIDD-ROT-PAV_PV-0011_XX_00-DR-CR-0001.dwg



LEGEND:

- PROPOSED OVERLAY
- PROPOSED SURFACE AND BINDER
- PROPOSED SURFACE, BINDER & BASE
- PROPOSED FULL DEPTH CONSTRUCTION
- PROPOSED FOOTPATH CONSTRUCTION
- PROPOSED CYCLE TRACK CONSTRUCTION
- SITE BOUNDARY LINE
- TEMPORARY LAND ACQUISITION



Disclaimer

a. © National Transport Authority (NTA) 2022. This drawing is confidential and the copyright in it is owned by NTA. This drawing must not be either loaned, copied or otherwise reproduced in whole or in part or used for any purpose without the prior permission of NTA.

b. This drawing is to be used for the design element identified in the title block. Other information shown is to be considered indicative only. The drawing is to be read in conjunction with all other relevant design drawings.

c. O.S. data used for plans are printed under © Ordnance Survey Ireland Government of Ireland. All rights reserved. Licence Number 2022/OSI_NMA_180 National Transport Authority. All elevations are in metres and relate to OSI Geoid Model (OSGM15) Mean Head. All Co-ordinates are in Irish Transverse Mercator Grid (ITM) as defined by OSI active local GPS station.

d. Information concerning the position of apparatus shown on this drawing is based on drawings supplied by the utility owners and/or the utility works contractor, whilst every care has been taken in the preparation of this drawing, positions should be taken as approximate and are intended for general guidance only and no representation is made by the NTA as to the accuracy, completeness, sufficiency or otherwise of this drawing and the position of the apparatus. The information contained herein does not purport to be comprehensive or final as the apparatus is subject to being altered and/or superseded. Recipients should not rely on this information. Any liabilities are hereby expressly disclaimed.

e. The information contained herein has been provided by the NTA but does not purport to be comprehensive or final. Recipients should not rely on the information. Neither the NTA nor any of its directors, officers, employees, agents, stakeholders or advisers make any representation or warranty as to, or accept any liability or responsibility in relation to, the adequacy, accuracy, reasonableness or completeness of the information provided as part of this document or any matter on which the information is based (including but not limited to loss or damage arising as a result of reliance by recipients on the information or any part of it). Any liabilities are hereby expressly disclaimed.



Rev	Date	Drn	Chk'd	App'd	Description
M01	FEB 2023	JGO	EFD	SMG	ISSUED FOR PHASE 4: PLANNING

Client: **NTA**
Údarás Náisiúnta Iompair
National Transport Authority

Engineering Designer: **CIROD**
TYPSA

Date: FEB 2023
Scale: 1:500 @ A1
1:1,000 @ A3

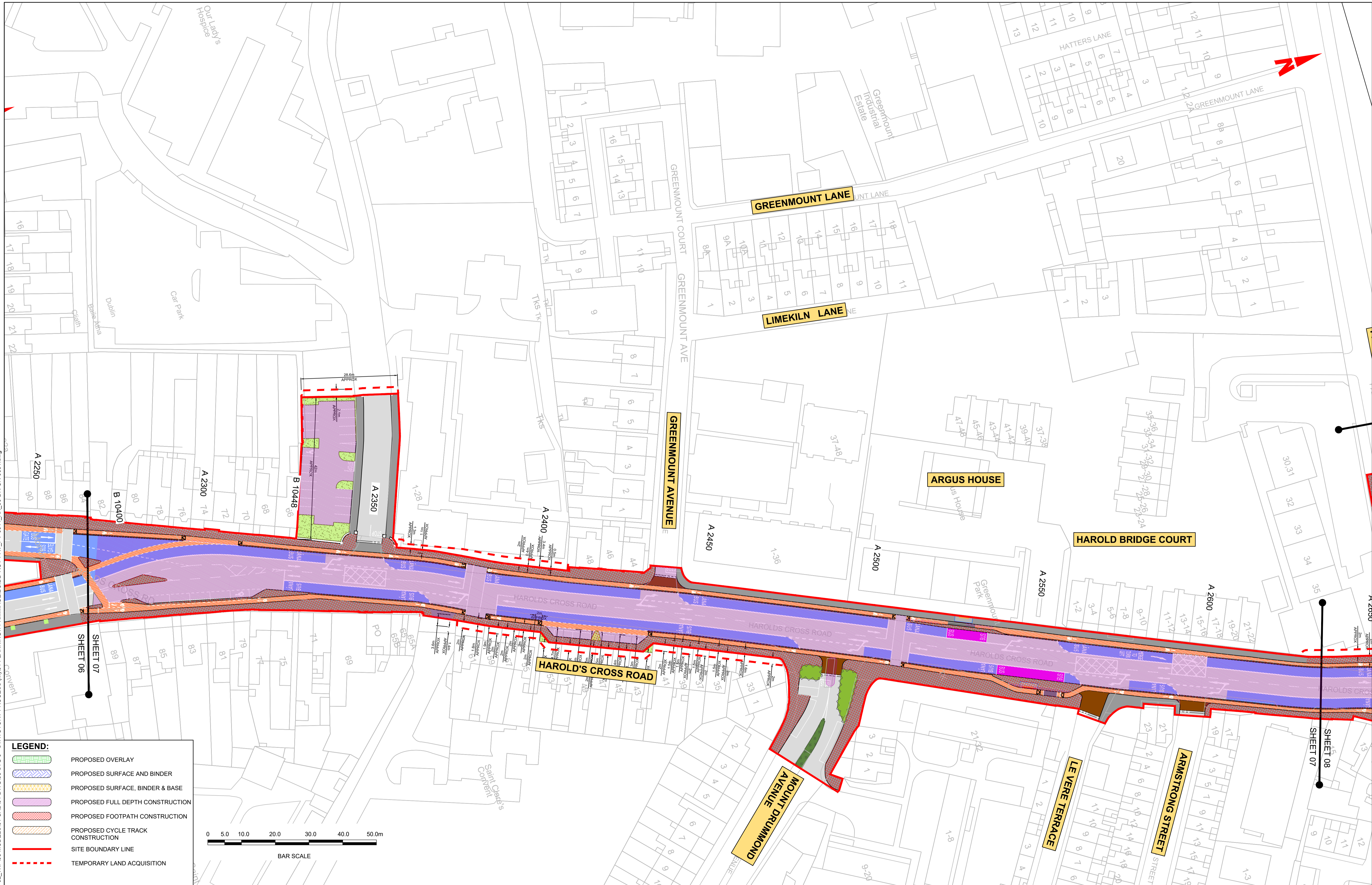
Drawn: JGO
Checked: EFD
Approved: SMG

Programme Code: BCIDD
Originator Code: ROT
QMS Code:

Programme Title: BUSCONNECTS DUBLIN CORE BUS CORRIDORS INFRASTRUCTURE WORKS			
Drawing Title: KIMMAGE TO CITY CENTRE CORE BUS CORRIDOR SCHEME PAVEMENT TREATMENT PLANS			
Drawing File Name: BCIDD-ROT-PAV_PV-0011_XX_00-DR-CR-0006	Sheet Number: 06 of 14	Status: A	Rev: M01

DO NOT SCALE USE FIGURED DIMENSIONS ONLY

\\noddu01p19119117-02_WIP008 MODELS01 CAD01 DWG003 STG 3 - STATUTORY PROCESS (M)\01 PLANNING\11 KIMMAGE\BCIDD-ROT-PAV_PV-0011_XX_00-DR-CR-0001.dwg



LEGEND:

- PROPOSED OVERLAY
- PROPOSED SURFACE AND BINDER
- PROPOSED SURFACE, BINDER & BASE
- PROPOSED FULL DEPTH CONSTRUCTION
- PROPOSED FOOTPATH CONSTRUCTION
- PROPOSED CYCLE TRACK CONSTRUCTION
- SITE BOUNDARY LINE
- TEMPORARY LAND ACQUISITION



Disclaimer:

a. © National Transport Authority (NTA) 2022. This drawing is confidential and the copyright in it is owned by NTA. This drawing must not be either loaned, copied or otherwise reproduced in whole or in part or used for any purpose without the prior permission of NTA.

b. This drawing is to be used for the design element identified in the titlebox. Other information shown is to be considered indicative only. The drawing is to be read in conjunction with all other relevant design drawings.

c. D.S. data used for plans are printed under © Ordnance Survey Ireland Government of Ireland. All rights reserved. Licence Number 2022/OSI_NMA_180 National Transport Authority. All elevations are in metres and relate to OSI Geoid Model (OSGM15) Mean Head. All Co-ordinates are in Irish Transverse Mercator Grid (ITM) as defined by OSI active local GPS station.

d. Information concerning the position of apparatus shown on this drawing is based on drawings supplied by the utility owners and/or the utility works contractor, whilst every care has been taken in the preparation of this drawing, positions should be taken as approximate and are intended for general guidance only and no representation is made by the NTA as to the accuracy, completeness, sufficiency or otherwise of this drawing and the position of the apparatus. The information contained herein does not purport to be comprehensive or final as the apparatus is subject to being altered and/or superceded. Recipients should not rely on this information. Any liabilities are hereby expressly disclaimed.

e. The information contained herein has been provided by the NTA but does not purport to be comprehensive or final. Recipients should not rely on the information. Neither the NTA nor any of its directors, officers, employees, agents, stakeholders or advisers make any representation or warranty as to, or accept any liability or responsibility in relation to, the adequacy, accuracy, reasonableness or completeness of the information provided as part of this document or any matter on which the information is based (including but not limited to loss or damage arising as a result of reliance by recipients on the information or any part of it). Any liabilities are hereby expressly disclaimed.



Rev	Date	Drn	Chk'd	App'd	Description
M01	FEB 2023	JGO	EFD	SMG	ISSUED FOR PHASE 4: PLANNING

Client: **NTA**
Udarás Náisiúnta Iompair
National Transport Authority

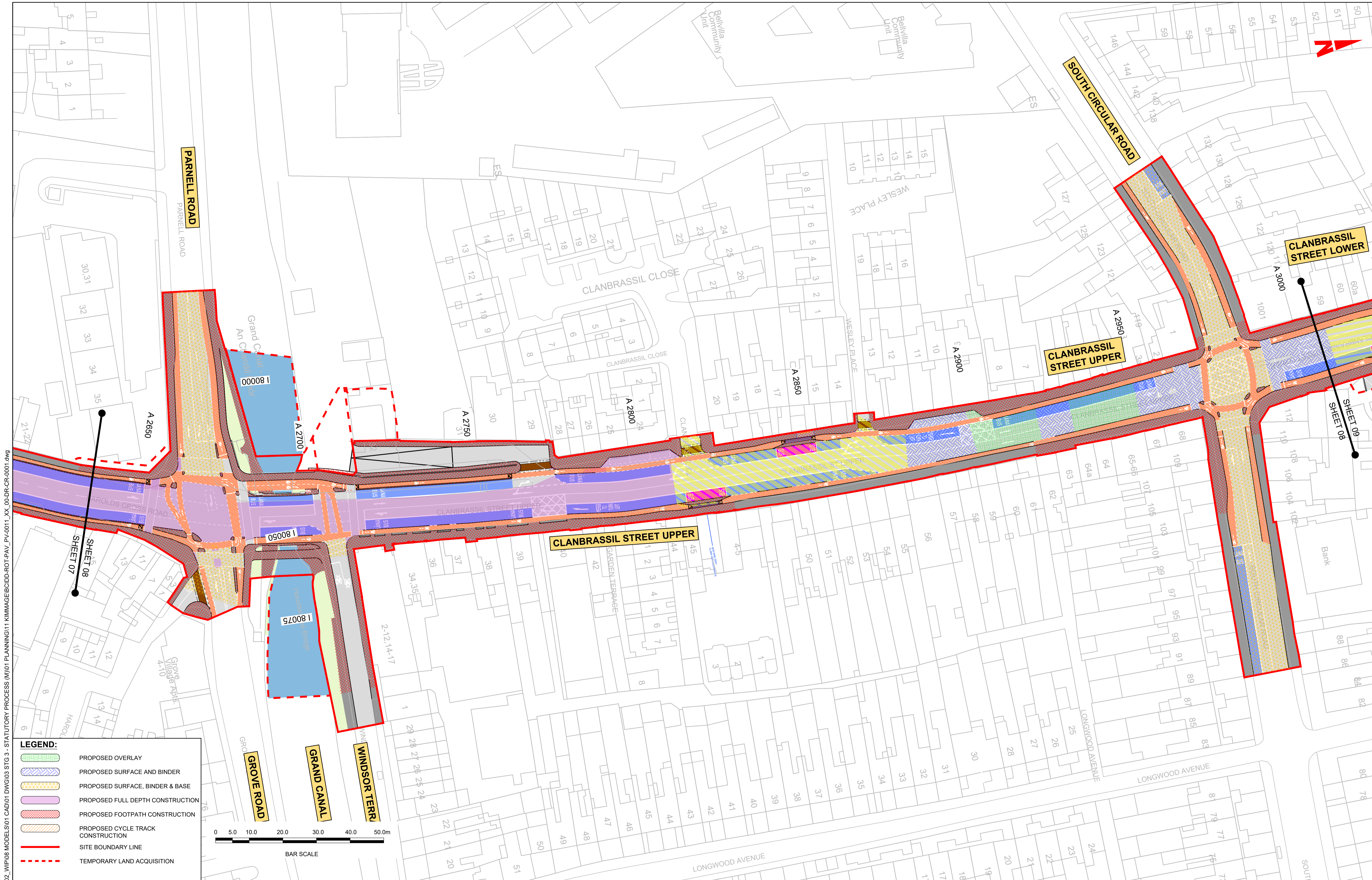
Engineering Designer: **CIROD**
TYPSA

Date: FEB 2023 | Scale: 1:500 @ A1, 1:1,000 @ A3 | Drawn: JGO | Checked: EFD | Approved: SMG

Programme Code: BCIDD | Originator Code: ROT | QMS Code:

Programme Title: BUSCONNECTS DUBLIN CORE BUS CORRIDORS INFRASTRUCTURE WORKS			
Drawing Title: KIMMAGE TO CITY CENTRE CORE BUS CORRIDOR SCHEME PAVEMENT TREATMENT PLANS			
Drawing File Name: BCIDD-ROT-PAV_PV-0011_XX_00-DR-CR-0007	Sheet Number: 07 of 14	Status: A	Rev: M01

\\P0000019\191717-02_WIPO8 MODELS\01 CAD\01 DWG\03 STG 3 - STATUTORY PROCESS (M)\01 PLANNING\11 KIMMAGE\BCIDD-ROT-PAV_PV-0011_XX_00-DR-CR-0001.dwg



LEGEND:

- PROPOSED OVERLAY
- PROPOSED SURFACE AND BINDER
- PROPOSED SURFACE, BINDER & BASE
- PROPOSED FULL DEPTH CONSTRUCTION
- PROPOSED FOOTPATH CONSTRUCTION
- PROPOSED CYCLE TRACK CONSTRUCTION
- SITE BOUNDARY LINE
- TEMPORARY LAND ACQUISITION



W:\000000\1911719117-02_WIP\08 MODELS\01 CAD\01 DWG\03 STG 3 - STATUTORY PROCESS (M)\01 PLANNING\11 KIMMAGE\BCIDD-ROT-PAV_PV-0011_XX_00-DR-CR-0001.dwg

Disclaimer

a. © National Transport Authority (NTA) 2022. This drawing is confidential and the copyright in it is owned by NTA. This drawing must not be either loaned, copied or otherwise reproduced in whole or in part or used for any purpose without the prior permission of NTA.

b. This drawing is to be used for the design element identified in the titleblock. Other information shown is to be considered indicative only. The drawing is to be read in conjunction with all other relevant design drawings.

c. O.S. data used for plans are printed under © Ordnance Survey Ireland Government of Ireland. All rights reserved. Licence Number 2022/OSI_NMA_180 National Transport Authority. All elevations are in metres and relate to OSI Geoid Model (OSGM15) Mean Head. All Co-ordinates are in Irish Transverse Mercator Grid (ITM) as defined by OSI active local GPS station.

d. Information concerning the position of apparatus shown on this drawing is based on drawings supplied by the utility owners and/or the utility works contractor, whilst every care has been taken in the preparation of this drawing, positions should be taken as approximate and are intended for general guidance only and no representation is made by the NTA as to the accuracy, completeness, sufficiency or otherwise of this drawing and the position of the apparatus. The information contained herein does not purport to be comprehensive or final as the apparatus is subject to being altered and/or superceded. Recipients should not rely on this information. Any liabilities are hereby expressly disclaimed.

e. The information contained herein has been provided by the NTA but does not purport to be comprehensive or final. Recipients should not rely on the information. Neither the NTA nor any of its directors, officers, employees, agents, stakeholders or advisers make any representation or warranty as to, or accept any liability or responsibility in relation to, the adequacy, accuracy, reasonableness or completeness of the information provided as part of this document or any matter on which the information is based (including but not limited to loss or damage arising as a result of reliance by recipients on the information or any part of it). Any liabilities are hereby expressly disclaimed.



Rev	Date	Drn	Chk'd	App'd	Description
M01	FEB 2023	JGO	EFD	SMG	ISSUED FOR PHASE 4: PLANNING

Client: **NTA**
Udarás Náisiúnta Iompair
National Transport Authority

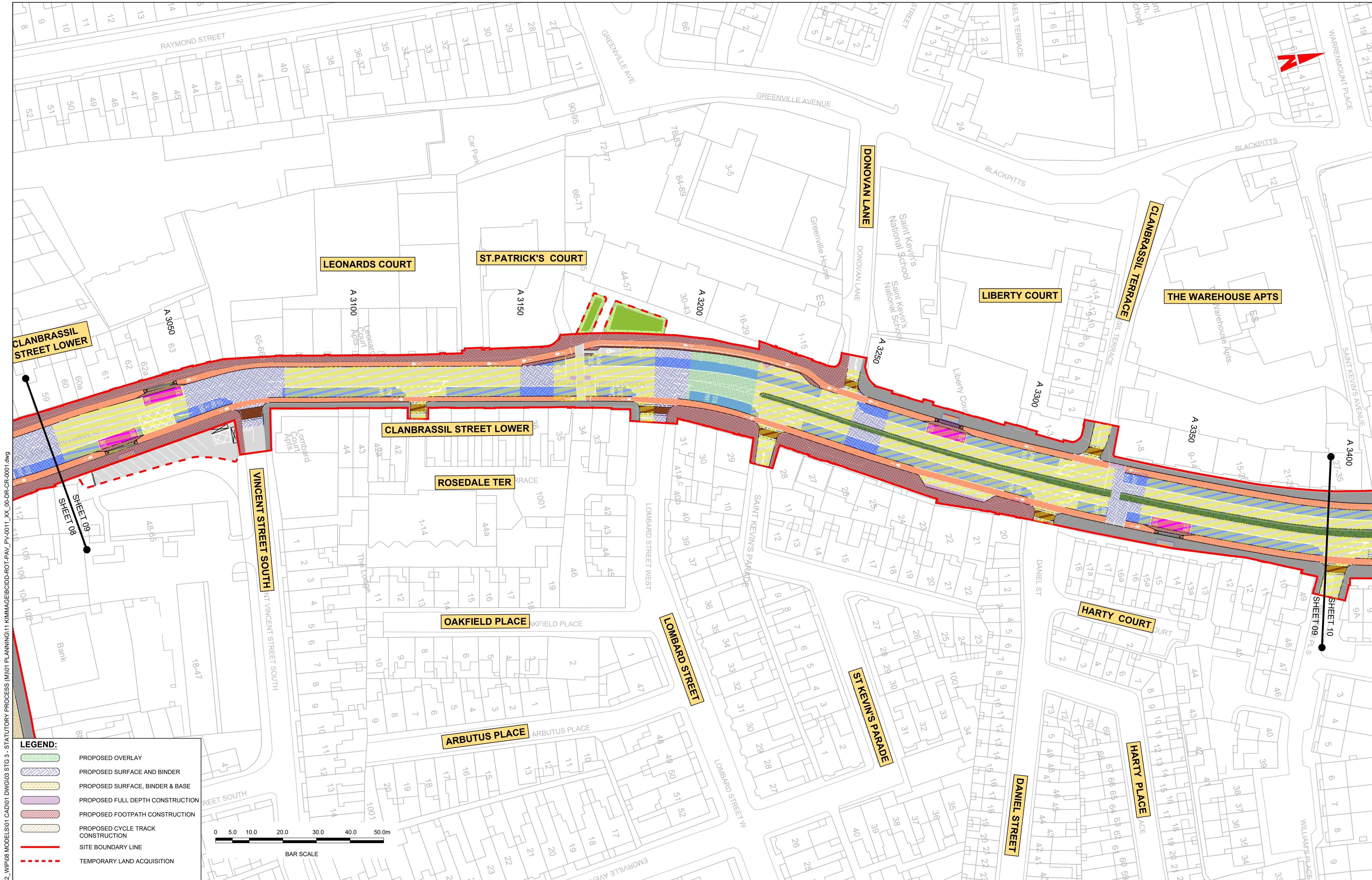
Engineering Designer: **CIROD**
TYPSA

Date: FEB 2023 | Scale: 1:500 @ A1, 1:1,000 @ A3 | Drawn: JGO | Checked: EFD | Approved: SMG

Programme Code: BCIDD | Originator Code: ROT | QMS Code:

Programme Title: BUSCONNECTS DUBLIN			
CORE BUS CORRIDORS INFRASTRUCTURE WORKS			
Drawing Title: KIMMAGE TO CITY CENTRE CORE BUS CORRIDOR SCHEME PAVEMENT TREATMENT PLANS			
Drawing File Name: BCIDD-ROT-PAV_PV-0011_XX_00-DR-CR-0008	Sheet Number: 08 of 14	Status: A	Rev: M01

DO NOT SCALE USE FIGURED DIMENSIONS ONLY



LEGEND:

- PROPOSED OVERLAY
- PROPOSED SURFACE AND BINDER
- PROPOSED SURFACE, BINDER & BASE
- PROPOSED FULL DEPTH CONSTRUCTION
- PROPOSED FOOTPATH CONSTRUCTION
- PROPOSED CYCLE TRACK CONSTRUCTION
- SITE BOUNDARY LINE
- TEMPORARY LAND ACQUISITION



Disclaimer:

a. © National Transport Authority (NTA) 2022. This drawing is confidential and the copyright in it is owned by NTA. This drawing must not be either loaned, copied or otherwise reproduced in whole or in part or used for any purpose without the prior permission of NTA.

b. This drawing is to be used for the design element identified in the titlebox. Other information shown is to be considered indicative only. The drawing is to be read in conjunction with all other relevant design drawings.

c. D.S. data used for plans are printed under © Ordnance Survey Ireland Government of Ireland. All rights reserved. Licence Number 2022/OSI_NMA_180 National Transport Authority. All elevations are in metres and relate to OSI Geoid Model (OSGM15) Mean Head. All Co-ordinates are in Irish Transverse Mercator Grid (ITM) as defined by OSI active local GPS station.

d. Information concerning the position of apparatus shown on this drawing is based on drawings supplied by the utility owners and/or the utility works contractor, whilst every care has been taken in the preparation of this drawing, positions should be taken as approximate and are intended for general guidance only and no representation is made by the NTA as to the accuracy, completeness, sufficiency or otherwise of this drawing and the position of the apparatus. The information contained herein does not purport to be comprehensive or final as the apparatus is subject to being altered and/or superceded. Recipients should not rely on this information. Any liabilities are hereby expressly disclaimed.

e. The information contained herein has been provided by the NTA but does not purport to be comprehensive or final. Recipients should not rely on the information. Neither the NTA nor any of its directors, officers, employees, agents, stakeholders or advisers make any representation or warranty as to, or accept any liability or responsibility in relation to, the adequacy, accuracy, reasonableness or completeness of the information provided as part of this document or any matter on which the information is based (including but not limited to loss or damage arising as a result of reliance by recipients on the information or any part of it). Any liabilities are hereby expressly disclaimed.



Rev	Date	Drn	Chk'd	App'd	Description
M01	FEB 2023	JGO	EFD	SMG	ISSUED FOR PHASE 4: PLANNING

Client: **NTA**
Údarás Náisiúnta Iompair
National Transport Authority

Engineering Designer: **PROD**
TYPSA

Date: FEB 2023
Scale: 1:500 @ A1
1:1,000 @ A3

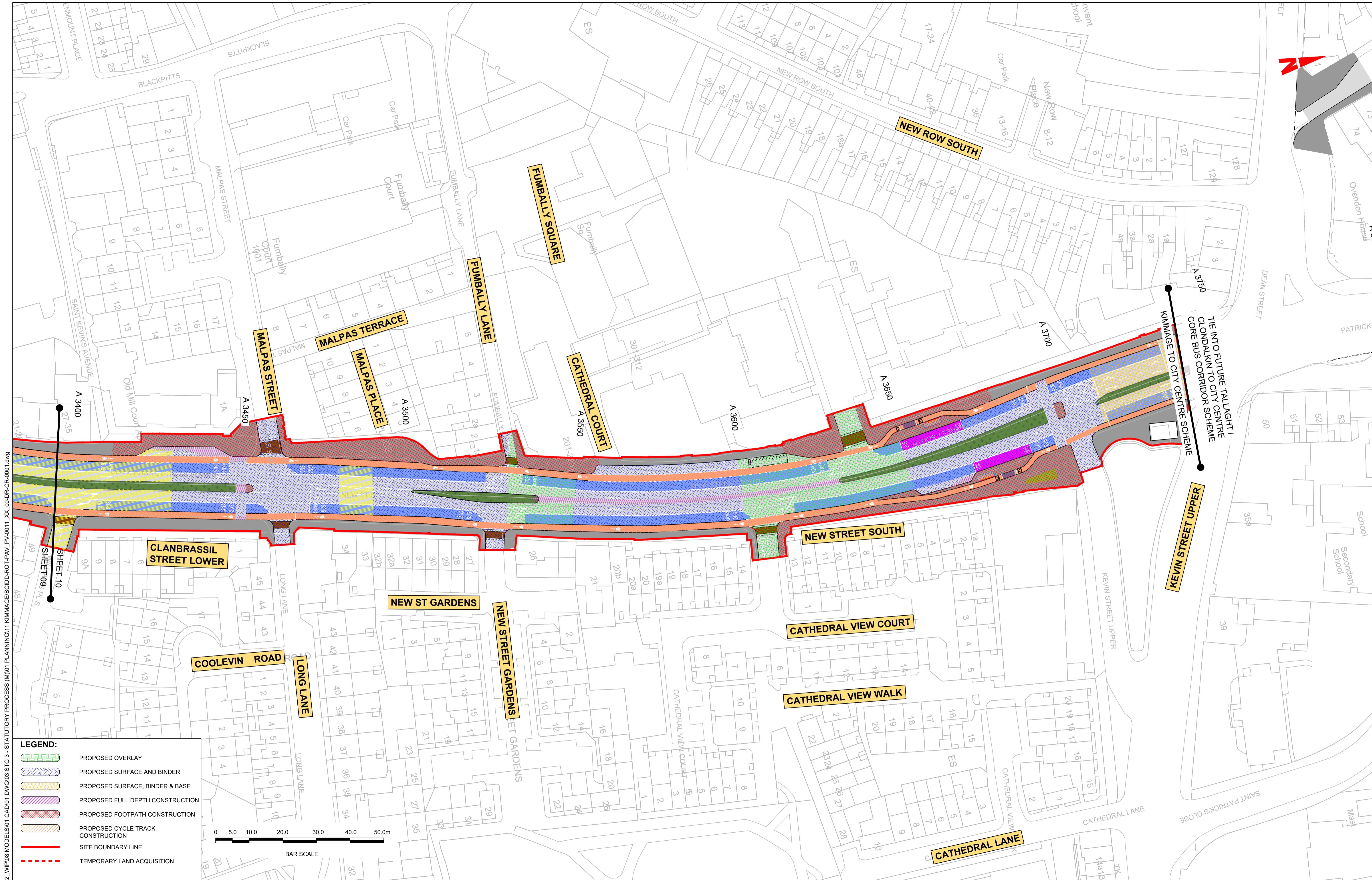
Drawn: JGO
Checked: EFD
Approved: SMG

Programme Code: BCIDD
Originator Code: ROT

QMS Code

Programme Title: BUSCONNECTS DUBLIN CORE BUS CORRIDORS INFRASTRUCTURE WORKS	
Drawing Title: KIMMAGE TO CITY CENTRE CORE BUS CORRIDOR SCHEME PAVEMENT TREATMENT PLANS	
Drawing File Name: BCIDD-ROT-PAV_PV-0011_XX_00-DR-CR-0009	Sheet Number: 09 of 14
Status: A	Rev: M01

DO NOT SCALE USE FIGURED DIMENSIONS ONLY



LEGEND:

- PROPOSED OVERLAY
- PROPOSED SURFACE AND BINDER
- PROPOSED SURFACE, BINDER & BASE
- PROPOSED FULL DEPTH CONSTRUCTION
- PROPOSED FOOTPATH CONSTRUCTION
- PROPOSED CYCLE TRACK CONSTRUCTION
- SITE BOUNDARY LINE
- TEMPORARY LAND ACQUISITION



W:\odds\p1\2019\191719117-02_WIP\08 MODELS\01 CAD\01 PLANNING\11 KIMMAGE\BCIDD-ROT-PAV_PV-0011_XX_00-DR-CR-0001.dwg
 2019/191719117-02_WIP\08 MODELS\01 CAD\01 PLANNING\11 KIMMAGE\BCIDD-ROT-PAV_PV-0011_XX_00-DR-CR-0001.dwg

Disclaimer

a. © National Transport Authority (NTA) 2022. This drawing is confidential and the copyright in it is owned by NTA. This drawing must not be either loaned, copied or otherwise reproduced in whole or in part or used for any purpose without the prior permission of NTA.

b. This drawing is to be used for the design element identified in the titlebox. Other information shown is to be considered indicative only. The drawing is to be read in conjunction with all other relevant design drawings.

c. O.S. data used for plans are printed under © Ordnance Survey Ireland Government of Ireland. All rights reserved. Licence Number 2022/OSI_NMA_180 National Transport Authority. All elevations are in metres and relate to OSI Geoid Model (OSGM15) Mean Head. All Co-ordinates are in Irish Transverse Mercator Grid (ITM) as defined by OSI active local GPS station.

d. Information concerning the position of apparatus shown on this drawing is based on drawings supplied by the utility owners and/or the utility works contractor, whilst every care has been taken in the preparation of this drawing, positions should be taken as approximate and are intended for general guidance only and no representation is made by the NTA as to the accuracy, completeness, sufficiency or otherwise of this drawing and the position of the apparatus. The information contained herein does not purport to be comprehensive or final as the apparatus is subject to being altered and/or superseded. Recipients should not rely on this information. Any liabilities are hereby expressly disclaimed.

e. The information contained herein has been provided by the NTA but does not purport to be comprehensive or final. Recipients should not rely on the information. Neither the NTA nor any of its directors, officers, employees, agents, stakeholders or advisers make any representation or warranty as to, or accept any liability or responsibility in relation to, the adequacy, accuracy, reasonableness or completeness of the information provided as part of this document or any matter on which the information is based (including but not limited to loss or damage arising as a result of reliance by recipients on the information or any part of it). Any liabilities are hereby expressly disclaimed.



Rev	Date	Drn	Chk'd	App'd	Description
M01	FEB 2023	JGO	EFD	SMG	ISSUED FOR PHASE 4: PLANNING

Client: **NTA**
Údarás Náisiúnta Iompair
National Transport Authority

Engineering Designer: **PROD**
TYPSA

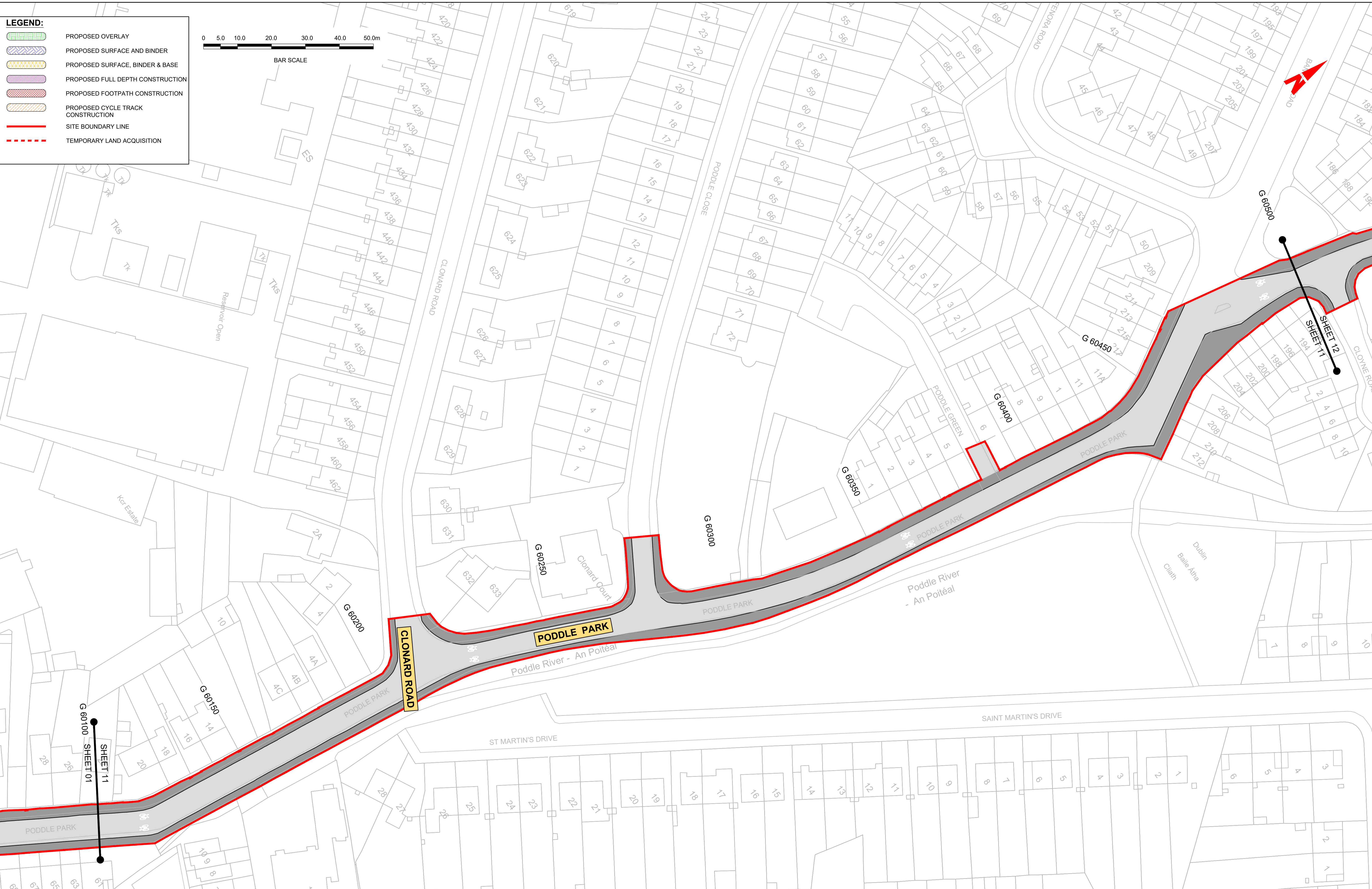
Date: FEB 2023
Scale: 1:500 @ A1
1:1,000 @ A3

Drawn: JGO
Checked: EFD
Approved: SMG

Programme Code: BCIDD
Originator Code: ROT
QMS Code:

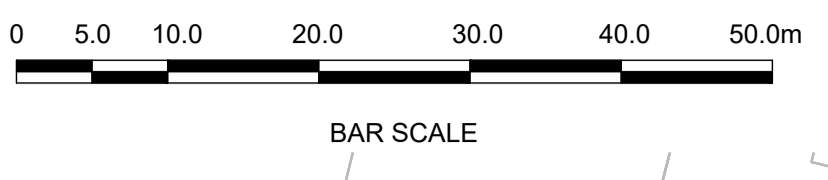
Programme Title BUSCONNECTS DUBLIN CORE BUS CORRIDORS INFRASTRUCTURE WORKS	
Drawing Title KIMMAGE TO CITY CENTRE CORE BUS CORRIDOR SCHEME PAVEMENT TREATMENT PLANS	
Drawing File Name BCIDD-ROT-PAV_PV-0011_XX_00-DR-CR-0010	Sheet Number 10 of 14
Status A	Rev M01

DO NOT SCALE USE FIGURED DIMENSIONS ONLY



LEGEND:

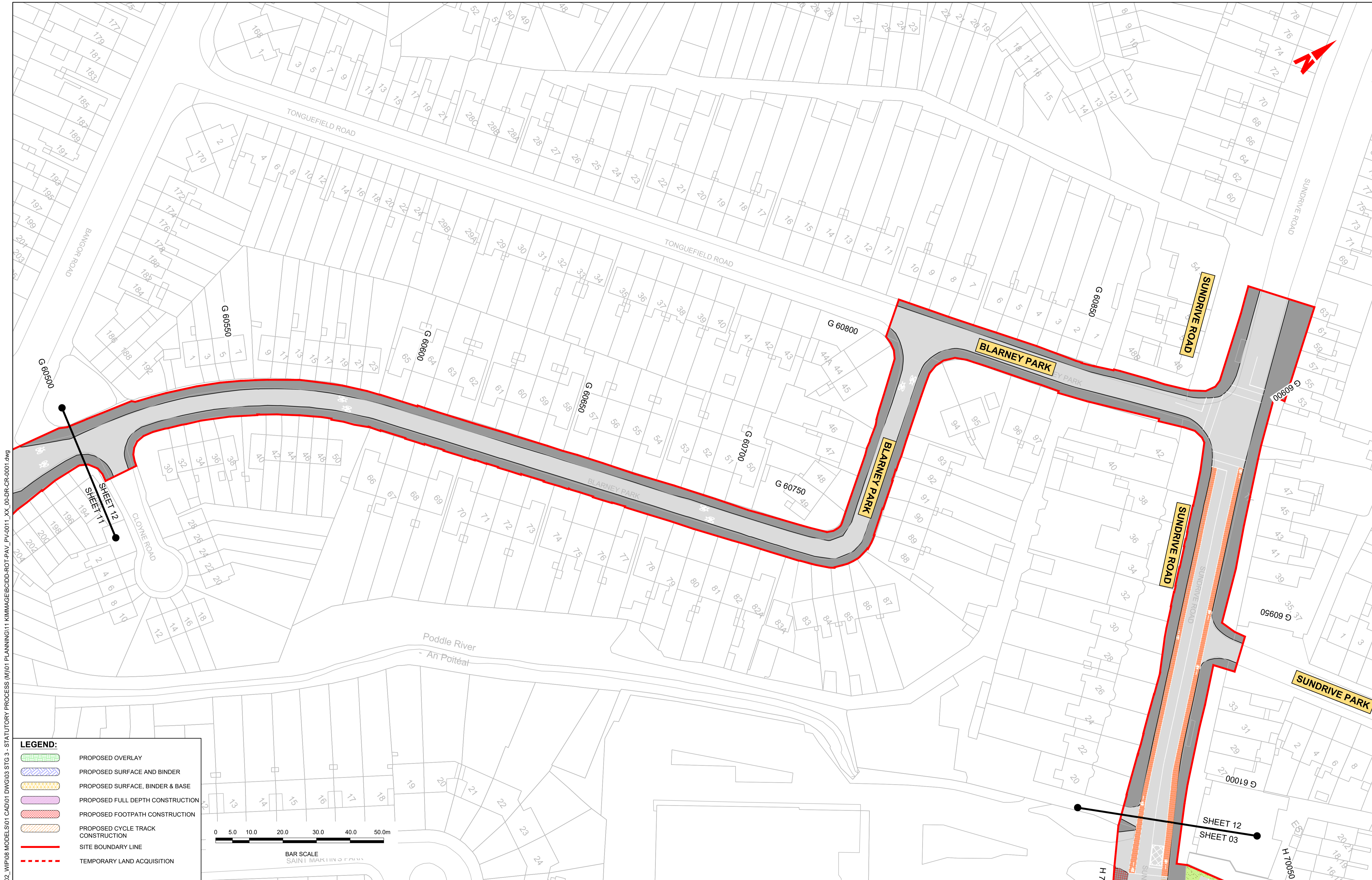
- PROPOSED OVERLAY
- PROPOSED SURFACE AND BINDER
- PROPOSED SURFACE, BINDER & BASE
- PROPOSED FULL DEPTH CONSTRUCTION
- PROPOSED FOOTPATH CONSTRUCTION
- PROPOSED CYCLE TRACK CONSTRUCTION
- SITE BOUNDARY LINE
- TEMPORARY LAND ACQUISITION



\\nodubp1\j\2019\1917\1917-02_WIP\08 MODELS\01 CAD\01 DWG\03 STG 3 - STATUTORY PROCESS (M)\01 PLANNING\11 KIMMAGE\BCIDD-ROT-PAV_PV-0011_XX_00-DR-CR-0001.dwg

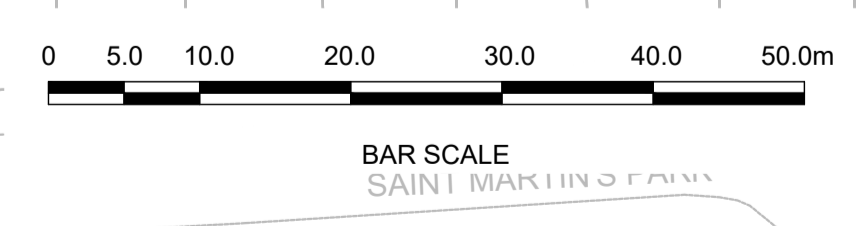
<p>Disclaimer</p> <p>a. © National Transport Authority (NTA) 2022. This drawing is confidential and the copyright in it is owned by NTA. This drawing must not be either loaned, copied or otherwise reproduced in whole or in part or used for any purpose without the prior permission of NTA.</p> <p>b. This drawing is to be used for the design element identified in the titlebox. Other information shown is to be considered indicative only. The drawing is to be read in conjunction with all other relevant design drawings.</p> <p>c. O.S. data used for plans are printed under © Ordnance Survey Ireland Government of Ireland. All rights reserved. Licence Number 2022/OSI_NMA_180 National Transport Authority. All elevations are in metres and relate to OSI Geoid Model (OSGM15) Mean Head. All Co-ordinates are in Irish Transverse Mercator Grid (ITM) as defined by OSI active local GPS station.</p> <p>d. Information concerning the position of apparatus shown on this drawing is based on drawings supplied by the utility owners and/or the utility works contractor, whilst every care has been taken in the preparation of this drawing, positions should be taken as approximate and are intended for general guidance only and no representation is made by the NTA as to the accuracy, completeness, sufficiency or otherwise of this information or any part of it. Any liabilities are hereby expressly disclaimed.</p> <p>e. The information contained herein has been provided by the NTA but does not purport to be comprehensive or final. Recipients should not rely on the information. Neither the NTA nor any of its directors, officers, employees, agents, stakeholders or advisers make any representation or warranty as to, or accept any liability or responsibility in relation to, the adequacy, accuracy, reasonableness or completeness of the information provided as part of this document or any matter on which the information is based (including but not limited to loss or damage arising as a result of reliance by recipients on the information or any part of it). Any liabilities are hereby expressly disclaimed.</p>		<p>Project Ireland 2040 Building Ireland's Future</p>		<table border="1" style="width: 100%; border-collapse: collapse; font-size: 8px;"> <thead> <tr> <th>Rev</th> <th>Date</th> <th>Drn</th> <th>Chk'd</th> <th>App'd</th> <th>Description</th> </tr> </thead> <tbody> <tr> <td>M01</td> <td>FEB 2023</td> <td>JGO</td> <td>EFD</td> <td>SMG</td> <td>ISSUED FOR PHASE 4: PLANNING</td> </tr> </tbody> </table>			Rev	Date	Drn	Chk'd	App'd	Description	M01	FEB 2023	JGO	EFD	SMG	ISSUED FOR PHASE 4: PLANNING	<p>Client</p> <p>NTA Údarás Náisiúnta Iompair National Transport Authority</p>		<p>Engineering Designer</p> <p>Irod TYPSA</p>			<p>Programme Title</p> <p style="text-align: center;">BUSCONNECTS DUBLIN CORE BUS CORRIDORS INFRASTRUCTURE WORKS</p> <p>Drawing Title</p> <p style="text-align: center;">KIMMAGE TO CITY CENTRE CORE BUS CORRIDOR SCHEME PAVEMENT TREATMENT PLANS</p>			
Rev	Date	Drn	Chk'd	App'd	Description																						
M01	FEB 2023	JGO	EFD	SMG	ISSUED FOR PHASE 4: PLANNING																						
<p>Date</p> <p>FEB 2023</p>		<p>Scale</p> <p>1:500 @ A1 1:1,000 @ A3</p>		<p>Drawn</p> <p>JGO</p>	<p>Checked</p> <p>EFD</p>	<p>Approved</p> <p>SMG</p>	<p>Drawing File Name</p> <p>BCIDD-ROT-PAV_PV-0011_XX_00-DR-CR-0011</p>		<p>Sheet Number</p> <p>11 of 14</p>	<p>Status</p> <p>A</p>	<p>Rev</p> <p>M01</p>																

DO NOT SCALE USE FIGURED DIMENSIONS ONLY



LEGEND:

	PROPOSED OVERLAY
	PROPOSED SURFACE AND BINDER
	PROPOSED SURFACE, BINDER & BASE
	PROPOSED FULL DEPTH CONSTRUCTION
	PROPOSED FOOTPATH CONSTRUCTION
	PROPOSED CYCLE TRACK CONSTRUCTION
	SITE BOUNDARY LINE
	TEMPORARY LAND ACQUISITION



W:\odubp\11\2019\1917119117-02_WIP\08 MODELS\01 CAD\01 DWG\03 STG 3 - STATUTORY PROCESS (M)\01 PLANNING\11 KIMMAGE\BCIDD-ROT-PAV_PV-0011_XX_00-DR-CR-0001.dwg

Disclaimer
 a. © National Transport Authority (NTA) 2022. This drawing is confidential and the copyright in it is owned by NTA. This drawing must not be either loaned, copied or otherwise reproduced in whole or in part or used for any purpose without the prior permission of NTA.
 b. This drawing is to be used for the design element identified in the title block. Other information shown is to be considered indicative only. The drawing is to be read in conjunction with all other relevant design drawings.
 c. O.S. data used for plans are printed under © Ordnance Survey Ireland Government of Ireland. All rights reserved. Licence Number 2022/OSI_NMA_180 National Transport Authority. All elevations are in metres and relate to OSI Geoid Model (OSGM15) Mean Head. All Co-ordinates are in Irish

Transverse Mercator Grid (ITM) as defined by OSI active local GPS station.
 d. Information concerning the position of apparatus shown on this drawing is based on drawings supplied by the utility owners and/or the utility works contractor, whilst every care has been taken in the preparation of this drawing, positions should be taken as approximate and are intended for general guidance only and no representation is made by the NTA as to the accuracy, completeness, sufficiency or otherwise of this drawing and the position of the apparatus. The information contained herein does not purport to be comprehensive or final as the apparatus is subject to being altered and/or superceded. Recipients should not rely on this information. Any liabilities are hereby expressly disclaimed.

e. The information contained herein has been provided by the NTA but does not purport to be comprehensive or final. Recipients should not rely on the information. Neither the NTA nor any of its directors, officers, employees, agents, stakeholders or advisers make any representation or warranty as to, or accept any liability or responsibility in relation to, the adequacy, accuracy, reasonableness or completeness of the information provided as part of this document or any matter on which the information is based (including but not limited to loss or damage arising as a result of reliance by recipients on the information or any part of it). Any liabilities are hereby expressly disclaimed.



Rev	Date	Drn	Chk'd	App'd	Description
M01	FEB 2023	JGO	EFD	SMG	ISSUED FOR PHASE 4: PLANNING

Client
NTA
 Údarás Náisiúnta Iompair
 National Transport Authority

Engineering Designer
CIROD
 TYPSA









Date	Scale	Drawn	Checked	Approved
FEB 2023	1:500 @ A1 1:1,000 @ A3	JGO	EFD	SMG

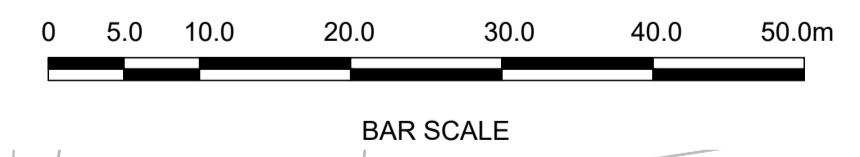
Programme Title BUSCONNECTS DUBLIN CORE BUS CORRIDORS INFRASTRUCTURE WORKS			
Drawing Title KIMMAGE TO CITY CENTRE CORE BUS CORRIDOR SCHEME PAVEMENT TREATMENT PLANS			
Drawing File Name BCIDD-ROT-PAV_PV-0011_XX_00-DR-CR-0012	Sheet Number 12 of 14	Status A	Rev M01

DO NOT SCALE USE FIGURED DIMENSIONS ONLY

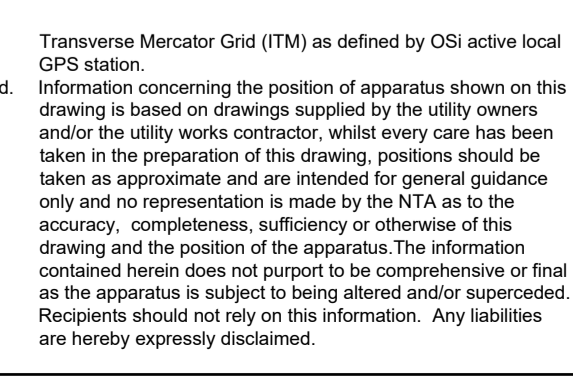


LEGEND:

-  PROPOSED OVERLAY
-  PROPOSED SURFACE AND BINDER
-  PROPOSED SURFACE, BINDER & BASE
-  PROPOSED FULL DEPTH CONSTRUCTION
-  PROPOSED FOOTPATH CONSTRUCTION
-  PROPOSED CYCLE TRACK CONSTRUCTION
-  SITE BOUNDARY LINE
-  TEMPORARY LAND ACQUISITION



Disclaimer
 a. © National Transport Authority (NTA) 2022. This drawing is confidential and the copyright in it is owned by NTA. This drawing must not be either loaned, copied or otherwise reproduced in whole or in part or used for any purpose without the prior permission of NTA.
 b. This drawing is to be used for the design element identified in the titlebox. Other information shown is to be considered indicative only. The drawing is to be read in conjunction with all other relevant design drawings.
 c. O.S. data used for plans are printed under © Ordnance Survey Ireland Government of Ireland. All rights reserved. Licence Number 2022/OSI_NMA_180 National Transport Authority. All elevations are in metres and relate to OSI Geoid Model (OSGM15) Mean Head. All Co-ordinates are in Irish Transverse Mercator Grid (ITM) as defined by OSI active local GPS station.
 d. Information concerning the position of apparatus shown on this drawing is based on drawings supplied by the utility owners and/or the utility works contractor, whilst every care has been taken in the preparation of this drawing, positions should be taken as approximate and are intended for general guidance only and no representation is made by the NTA as to the accuracy, completeness, sufficiency or otherwise of this drawing and the position of the apparatus. The information contained herein does not purport to be comprehensive or final as the apparatus is subject to being altered and/or superseded. Recipients should not rely on this information. Any liabilities are hereby expressly disclaimed.
 e. The information contained herein has been provided by the NTA but does not purport to be comprehensive or final. Recipients should not rely on the information. Neither the NTA nor any of its directors, officers, employees, agents, stakeholders or advisers make any representation or warranty as to, or accept any liability or responsibility in relation to, the adequacy, accuracy, reasonableness or completeness of the information provided as part of this document or any matter on which the information is based (including but not limited to loss or damage arising as a result of reliance by recipients on the information or any part of it). Any liabilities are hereby expressly disclaimed.



Rev	Date	Drn	Chk'd	App'd	Description
M01	FEB 2023	JGO	EFD	SMG	ISSUED FOR PHASE 4: PLANNING

Client: **NTA**
 Údarás Náisiúnta Iompair
 National Transport Authority

Engineering Designer: **CIROD**
 TYPSA

Date: FEB 2023
 Scale: 1:500 @ A1
 1:1,000 @ A3

Programme Code: BCIDD
 Originator Code: ROT

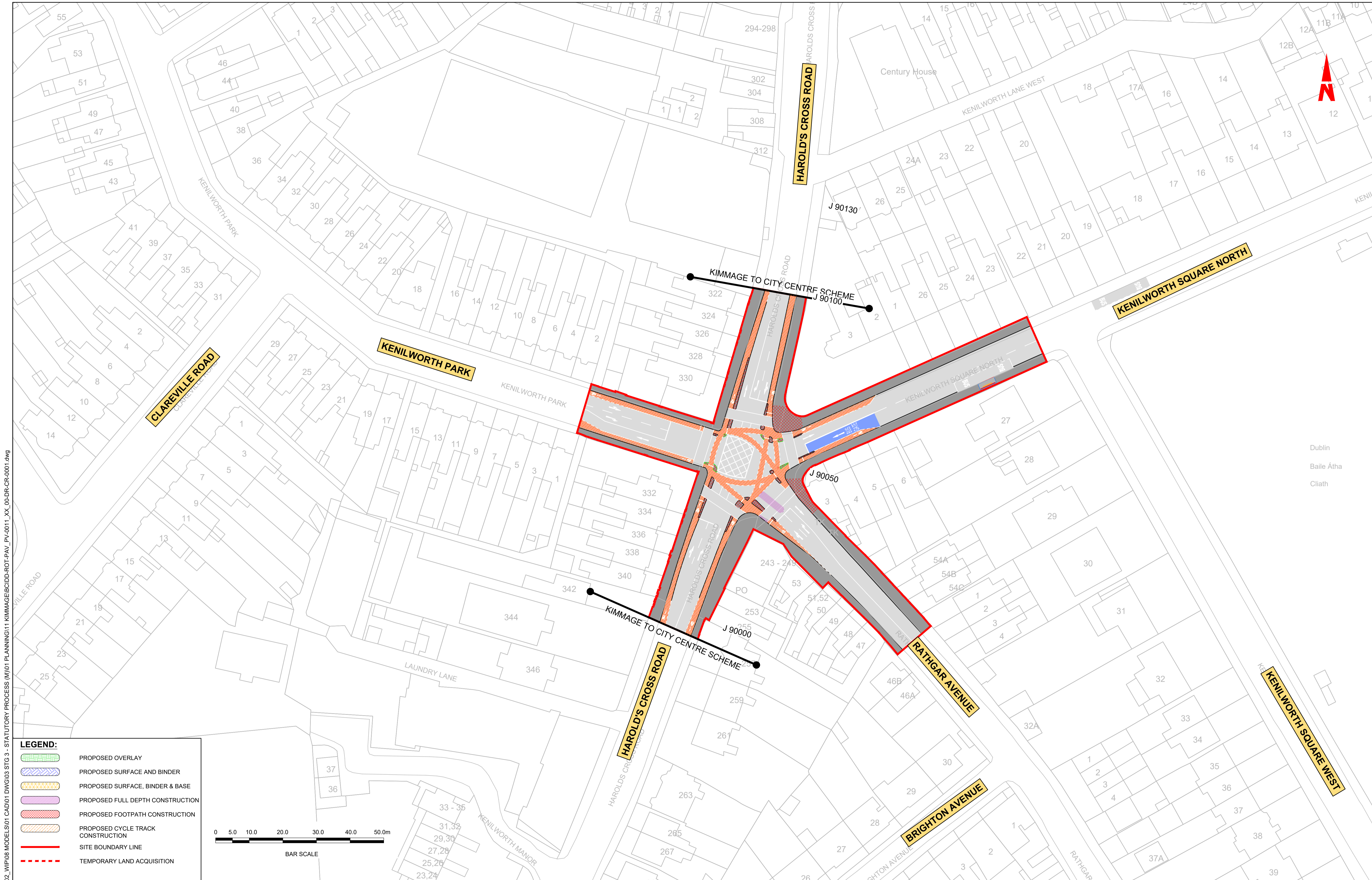
Drawn: JGO
 Checked: EFD
 Approved: SMG

QMS Code

Programme Title BUSCONNECTS DUBLIN CORE BUS CORRIDORS INFRASTRUCTURE WORKS			
Drawing Title KIMMAGE TO CITY CENTRE CORE BUS CORRIDOR SCHEME PAVEMENT TREATMENT PLANS			
Drawing File Name BCIDD-ROT-PAV_PV-0011_XX_00-DR-CR-0013	Sheet Number 13 of 14	Status A	Rev M01

DO NOT SCALE USE FIGURED DIMENSIONS ONLY

\\wddubp1\U201919\17117-02_WIP\08 MODELS\01 CAD\01 PLANNING\11 KIMMAGE\BCIDD-ROT-PAV_PV-0011_XX_00-DR-CR-001.dwg



LEGEND:

- PROPOSED OVERLAY
- PROPOSED SURFACE AND BINDER
- PROPOSED SURFACE, BINDER & BASE
- PROPOSED FULL DEPTH CONSTRUCTION
- PROPOSED FOOTPATH CONSTRUCTION
- PROPOSED CYCLE TRACK CONSTRUCTION
- SITE BOUNDARY LINE
- TEMPORARY LAND ACQUISITION



Disclaimer:
 a. © National Transport Authority (NTA) 2022. This drawing is confidential and the copyright in it is owned by NTA. This drawing must not be either loaned, copied or otherwise reproduced in whole or in part or used for any purpose without the prior permission of NTA.
 b. This drawing is to be used for the design element identified in the titleblock. Other information shown is to be considered indicative only. The drawing is to be read in conjunction with all other relevant design drawings.
 c. O.S. data used for plans are printed under © Ordnance Survey Ireland Government of Ireland. All rights reserved. Licence Number 2022/OSI_NMA_180 National Transport Authority. All elevations are in metres and relate to OSI Geoid Model (OSGM15) Mean Head. All Co-ordinates are in Irish

Transverse Mercator Grid (ITM) as defined by OSI active local GPS station.
 Information concerning the position of apparatus shown on this drawing is based on drawings supplied by the utility owners and/or the utility works contractor, whilst every care has been taken in the preparation of this drawing, positions should be taken as approximate and are intended for general guidance only and no representation is made by the NTA as to the accuracy, completeness, sufficiency or otherwise of this drawing and the position of the apparatus. The information contained herein does not purport to be comprehensive or final as the apparatus is subject to being altered and/or superseded. Recipients should not rely on this information. Any liabilities are hereby expressly disclaimed.

The information contained herein has been provided by the NTA but does not purport to be comprehensive or final. Recipients should not rely on the information. Neither the NTA nor any of its directors, officers, employees, agents, stakeholders or advisers make any representation or warranty as to, or accept any liability or responsibility in relation to, the adequacy, accuracy, reasonableness or completeness of the information provided as part of this document or any matter on which the information is based (including but not limited to loss or damage arising as a result of reliance by recipients on the information or any part of it). Any liabilities are hereby expressly disclaimed.



Rev	Date	Drm	Chk'd	App'd	Description
M01	FEB 2023	JGO	EFD	SMG	ISSUED FOR PHASE 4: PLANNING

Client
NTA
 Údarás Náisiúnta Iompair
 National Transport Authority

Engineering Designer
CIROD
 TYPSA

Programme Title
BUSCONNECTS DUBLIN
CORE BUS CORRIDORS INFRASTRUCTURE WORKS

Drawing Title
 KIMMAGE TO CITY CENTRE CORE BUS CORRIDOR SCHEME
 PAVEMENT TREATMENT PLANS

Drawing File Name
 BCIDD-ROT-PAV_PV-0011_XX_00-DR-CR-0014

Sheet Number
 14 of 14

Status
 A

Rev
 M01

DO NOT SCALE USE FIGURED DIMENSIONS ONLY

\\produbp1\j\2019\1917\1917-02_WIP\08 MODELS\01 CAD\01 DWG\03 STG 3 - STATUTORY PROCESS (M)\01 PLANNING\11 KIMMAGE\BCIDD-ROT-PAV_PV-0011_XX_00-DR-CR-0001.dwg

Dublin
 Baile Átha
 Cliath